



2007 Chevrolet Suburban LT

Our No-Haggle Price \$12,987

Book Retail Value \$15,995

View this vehicle on our website at leesburgautoimport.com

Leesburg Auto Import

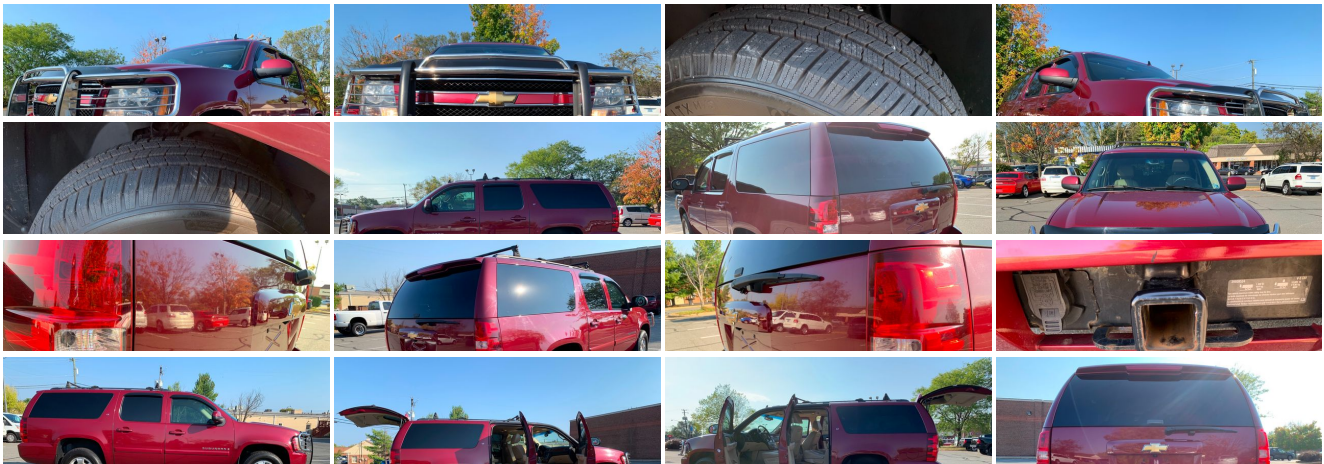
Toll Free: 1-866-249-5348, Local: 703-771-7600

2 Fairfax St SE, Leesburg, Virginia 20175

Photos

Details

Contact





Specifications:

Year:	2007
VIN:	1GNFK16347J300115
Make:	Chevrolet
Stock:	L300115
Model/Trim:	Suburban LT
Condition:	Pre-Owned
Body:	SUV
Exterior:	Sport Red Metallic
Engine:	ENGINE, VORTEC 5.3L V8 SFI FLEX-FUEL
Mileage:	110,748
Drivetrain:	4 Wheel Drive
Economy:	City 15 / Highway 20

Vehicle Description

Installed Options

Interior

- Air conditioning, dual-zone manual climate control with individual climate settings for driver and right-front passenger
- Air conditioning, rear auxiliary
- Audio system controls, rear with 2 headphone jacks (headphones not included), power outlet and controls for volume, station selection and media
- Audio system, AM/FM stereo with MP3 compatible CD player, seek-and-scan, digital clock, auto-tone control, Radio Data System (RDS), speed-compensated volume and TheftLock
- Console, floor with storage area, cup holders and integrated second row audio controls
- Console, overhead mini with map lights (Includes sunroof controls when (CF5) power sunroof is ordered.)
- Cruise control, electronic with set and resume speed
- Door locks, power programmable with lockout protection
- Lighting, interior with dome light, driver-and-passenger-side door switch with delayed entry feature, cargo lights, door handle or Remote Keyless Entry-activated illuminated entry and map lights in front and second seat positions
- OnStar, 1-year of Safe and Sound plan. Includes Automatic Notification of Air Bag Deployment, Stolen Vehicle Location Assistance, Emergency Services, Roadside Assistance, Remote Door Unlock, OnStar Vehicle Diagnostics, Hands-Free Calling, AccidentAssist, and Remote Horn & Lights (Not available with order type FDR. OnStar services require vehicle electrical system (including battery), wireless service and GPS satellite signals to be available and operating for features to function properly. OnStar acts as a link to existing emergency service providers. OnStar Vehicle Diagnostics available on most 2004 MY and newer GM vehicles. Diagnostic capability varies by model. Visit onstar.com for system limitations and details.)
- Power outlets, 5 auxiliary, 12-volt, includes 2 on the instrument panel, 1 in the cargo area, 1 inside center console and 1 at back of console
- Remote vehicle starter prep package, includes Remote Keyless Entry
- Seat adjuster, driver power
- Seats, front bucket with Custom Cloth, 6-way power driver seat adjuster, outboard adjustable head restraints, floor console and rear storage pockets
- Seats, second row 60/40 split-folding bench with Custom Cloth, 3-passenger with center armrest
- Seats, third row 50/50 split-bench with Custom Cloth, 2-passenger, removable, all-belts-to-seat, includes 2 cup holders and storage bin
- Steering wheel controls, mounted audio, Driver Information Center and cruise controls, includes Driver Information Center controls on instrument panel to right of steering wheel
- Assist handles, front passenger and second row outboard
- Audio system feature, 8-speaker system- Cargo mat- Cargo shade
- Defogger, rear-window electric- Floor covering, color-keyed carpeting
- Floor mats, color-keyed carpeted front and second row, removable - Headliner, cloth
- Heater, rear auxiliary with rear passenger heating ducts

Option Packages

Factory Installed Packages

ENGINE, VORTEC 5.3L V8 SFI FLEX-FUEL
with Active Fuel Management, capable of
running on unleaded or up to 85% ethanol (310
hp [231.1 kW] @ 5200 rpm, 335 lb-ft of torque
[452.3 N-m] @ 4400 rpm), aluminum block

- Instrumentation, analog with speedometer, odometer with trip odometer, fuel level, voltmeter, engine temperature, oil pressure and tachometer
- Mirror, inside rearview auto-dimming with 8-point compass and outside temperature display
- Steering column, Tilt-Wheel, adjustable with brake/transmission shift interlock
- Steering wheel, leather-wrapped- Theft-deterrent system, vehicle, PASS-Key III
- Tire Pressure Monitoring System (does not apply to spare tire)
- Visors, driver and front passenger illuminated vanity mirrors, padded with cloth trim, extends on rod
- Warning tones, headlamp on, key-in-ignition, driver and right-front passenger safety belt unfasten and turn signal on
- Windows, power with driver Express-Down and lockout features

Exterior

- Assist steps, Black, mounted between front and rear wheels
- Daytime Running Lamps, with automatic exterior lamp control
- Headlamps, dual halogen composite with automatic exterior lamp control and flash-to-pass feature
- Luggage rack side rails, roof-mounted, Black
- Mirrors, outside heated power-adjustable, manual-folding (with 1LT Preferred Equipment Group Mirror caps are color-keyed.) (with 2LT Preferred Equipment Group Mirror caps are color-keyed. Mirror caps are satin chrome with (Z71) Off-Road Suspension Package.)
- Wipers, front intermittent wet-arm with flat blade and pulse washers
- Door handles, color-keyed (with 2LT or 3LT Preferred Equipment Group Not available with (Z71) Off-Road Suspension Package.)
- Fascia, front color-keyed- Fascia, rear color-keyed- Fog lamps, front round
- Glass, Solar-Ray deep-tinted (all windows except light-tinted glass on windshield and driver- and front passenger-side glass)
- Moldings, color-keyed bodyside- Wiper, rear intermittent with washer

Safety

- Air conditioning, dual-zone manual climate control with individual climate settings for driver and right-front passenger
- Air conditioning, rear auxiliary
- Audio system controls, rear with 2 headphone jacks (headphones not included), power outlet and controls for volume, station selection and media
- Audio system, AM/FM stereo with MP3 compatible CD player, seek-and-scan, digital clock, auto-tone control, Radio Data System (RDS), speed-compensated volume and TheftLock
- Console, floor with storage area, cup holders and integrated second row audio controls
- Console, overhead mini with map lights (Includes sunroof controls when (CF5) power sunroof is ordered.)
- Cruise control, electronic with set and resume speed
- Door locks, power programmable with lockout protection
- Lighting, interior with dome light, driver-and passenger-side door switch with delayed entry feature, cargo lights, door handle or Remote Keyless Entry-activated illuminated entry and map lights in front and second seat positions
- OnStar, 1-year of Safe and Sound plan. Includes Automatic Notification of Air Bag Deployment, Stolen Vehicle Location Assistance, Emergency Services, Roadside Assistance, Remote Door Unlock, OnStar Vehicle Diagnostics, Hands-Free Calling, AccidentAssist, and Remote Horn & Lights (Not available with order type FDR. OnStar services require vehicle electrical system (including battery), wireless service and GPS satellite signals to be available and operating for features to function properly. OnStar acts as a link to existing emergency service providers. OnStar Vehicle Diagnostics available on most 2004 MY and newer GM vehicles. Diagnostic capability varies by model. Visit onstar.com for system limitations and details.)
- Power outlets, 5 auxiliary, 12-volt, includes 2 on the instrument panel, 1 in the cargo area, 1 inside center console and 1 at back of console
- Remote vehicle starter prep package, includes Remote Keyless Entry
- Seat adjuster, driver power
- Seats, front bucket with Custom Cloth, 6-way power driver seat adjuster, outboard adjustable head restraints, floor console and rear storage pockets
- Seats, second row 60/40 split-folding bench with Custom Cloth, 3-passenger with center armrest
- Seats, third row 50/50 split-bench with Custom Cloth, 2-passenger, removable, all-belts-to-seat, includes 2 cup holders and storage bin
- Steering wheel controls, mounted audio, Driver Information Center and cruise controls, includes Driver Information Center controls on instrument panel to right of steering wheel
- Assist handles, front passenger and second row outboard
- Audio system feature, 8-speaker system- Cargo mat- Cargo shade
- Defogger, rear-window electric- Floor covering, color-keyed carpeting
- Floor mats, color-keyed carpeted front and second row, removable - Headliner, cloth
- Heater, rear auxiliary with rear passenger heating ducts
- Instrumentation, analog with speedometer, odometer with trip odometer, fuel level, voltmeter, engine temperature, oil pressure and tachometer
- Mirror, inside rearview auto-dimming with 8-point compass and outside temperature display

- Steering column, Tilt-Wheel, adjustable with brake/transmission shift interlock
- Steering wheel, leather-wrapped- Theft-deterrent system, vehicle, PASS-Key III
- Tire Pressure Monitoring System (does not apply to spare tire)
- Visors, driver and front passenger illuminated vanity mirrors, padded with cloth trim, extends on rod
- Warning tones, headlamp on, key-in-ignition, driver and right-front passenger safety belt unfasten and turn signal on
- Windows, power with driver Express-Down and lockout features

Mechanical

- Brakes, 4-wheel antilock, 4-wheel disc (1/2 ton models only.)
- Recovery hooks, front, frame-mounted (Not available on 2WD 1/2 ton models.)
- StabiliTrak, stability control system with Proactive Roll Avoidance (1/2 ton models only.)
- Tire, spare P265/70R17 (1/2 ton models only. Upgradeable to (4JP) P265/70R17 on-/off-road, blackwall spare tire.)
- Tires, P265/70R17 all-season, blackwall (Requires 1/2 ton models.)
- Transmission, 4-speed automatic, electronically controlled with overdrive and tow/haul mode (Requires 1/2 ton models.)
- Wheels, 4 - 17" x 7.5" (43.2 cm x 19.1 cm) aluminum, 5-spoke, with smooth surface and rectangular pockets (1/2 ton models only. Not available with (QJP) P265/70R17 on-/off-road, blackwall tires or (QJM) P265/70R17 on-/off-road, White outlined-letter tires.)
- 4-wheel drive
- Alternator, 160 amps (Standard on 1/2 ton models. Included and only available with (VYU) Snow Plow Prep Package on 4x4 3/4 ton models.)
- Battery, heavy-duty 600 cold-cranking amps, maintenance-free with rundown protection and retained accessory power
- Body, liftgate with liftglass, rear door system with rear-window wiper/washer
- Engine, Vortec 5.3L V8 SFI Flex-Fuel with Active Fuel Management, capable running on unleaded or up to 85% ethanol (310 hp [231.1 kW] @ 5200 rpm, 335 lb-ft of torque [452.3 N-m] @ 4400 rpm), aluminum block (Requires 4x4 1/2 ton models.)
- GVWR, 7400 lbs. (3357 kg) (Requires 4x4 1/2 ton models.) - Key, single, 2-sided
- Rear axle, 3.73 ratio- Steering, power
- Suspension Package, Premium Smooth Ride (1/2 ton models only.)
- Suspension, front coil-over-shock with stabilizer bar (1/2 ton models only.)
- Suspension, rear multi-link with coil springs (1/2 ton models only.)
- Tire carrier, lockable outside spare, winch-type mounted under frame at rear
- Trailing equipment, heavy-duty, includes trailing hitch platform, 7-wire harness with independent fused trailing circuits mated to a 7-way sealed connector, (VR4) 2" trailing receiver
- Transfer case, electronic Autotrac with rotary controls (Requires 4x4 models.)
- Wheel, 17" (43.2 cm) full-size, steel spare (1/2 ton models only)

Price excludes \$599.00 processing fee, registration fees and state and local sales taxes. 3% surcharge will be added on all CC charges over \$500.00. Deposits are non-refundable. All our sales are based on first-come-first-serve policy. We work very hard to accurately describe our vehicles through text descriptions and elaborate photos. When you purchase a pre-owned vehicle it is not a new vehicle. Any used vehicle can have normal wear and blemishes. Please read the descriptions thoroughly and view all pictures.

Leesburg Auto Import

Leesburg Auto Import

View this car on our website at leesburgautoimport.com/6697720

Website: leesburgautoimport.com

Phone: Toll Free: 1-866-249-5348, Local: 703-771-7600

Map: [2 Fairfax St SE, Leesburg, Virginia 20175](#)

