



## 2019 Toyota 86 GT

**Our Price \$26,456**

View this vehicle on our website at [thecarliquidators.com](https://thecarliquidators.com)

The Car Liquidators

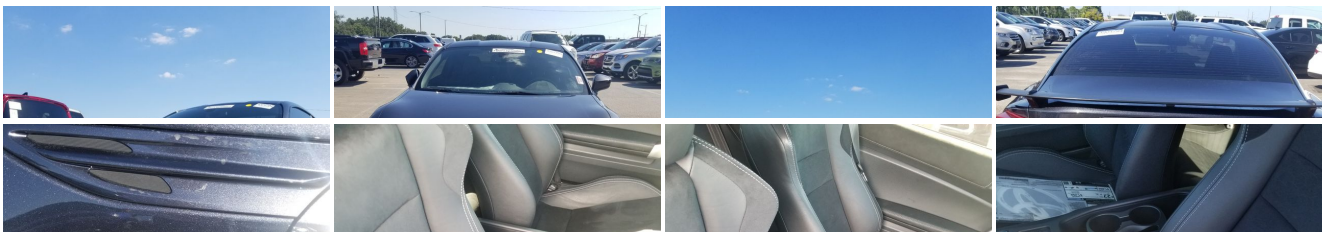
[855-842-4152](tel:855-842-4152)

930 Carter Rd Ste 316, Wintergarden, FL 34787

[Photos](#)

[Details](#)

[Contact](#)





# Specifications:

|                    |   |
|--------------------|---|
| <b>Year:</b>       | 2019  |
| <b>VIN:</b>        | JF1ZNAE1XK8700313                           |
| <b>Make:</b>       | Toyota                                      |
| <b>Model/Trim:</b> | 86 GT                                       |
| <b>Condition:</b>  | Pre-Owned                                   |
| <b>Body:</b>       | Coupe                                       |
| <b>Exterior:</b>   | Steel                                       |
| <b>Engine:</b>     | Engine: 2.0L 4-Cyl DOHC D-4S Injection w/AT |
| <b>Interior:</b>   | Black Leather                               |
| <b>Mileage:</b>    | 3,300                                       |
| <b>Drivetrain:</b> | Rear Wheel Drive                            |
| <b>Economy:</b>    | City 24 / Highway 32                        |

# Vehicle Description

| Installed Options   | Option Packages   |                        |       |                   |      |            |      |                 |       |                         |      |                            |       |  |       |  |       |                      |      |       |  |
|---|---|------------------------|-------|-------------------|------|------------|------|-----------------|-------|-------------------------|------|----------------------------|-------|--|-------|--|-------|----------------------|------|-------|--|
| <b>Interior</b> <ul style="list-style-type: none"> <li>- FOB Controls -inc: Trunk/Hatch/Tailgate</li> <li>- Gauges -inc: Speedometer, Odometer, Voltmeter, Engine Coolant Temp, Tachometer, Oil Temperature, Trip Odometer and Trip Computer</li> <li>- Leather Seat Material- Power Door Locks</li> <li>- Proximity Key For Doors And Push Button Start</li> <li>- Remote Keyless Entry w/Integrated Key Transmitter, Illuminated Entry, Illuminated Ignition Switch and Panic Button</li> <li>- Trip Computer- 1 Seatback Storage Pocket- 2 12V DC Power Outlets- Air Filtration</li> <li>- Cargo Area Concealed Storage- Cargo Space Lights- Carpet Floor Trim</li> <li>- Cruise Control w/Steering Wheel Controls- Day-Night Auto-Dimming Rearview Mirror</li> <li>- Delay Off Interior Lighting- Delayed Accessory Power- Digital/Analog Display</li> <li>- Driver And Passenger Heated-Cushion, Driver And Passenger Heated-Seatback</li> <li>- Driver And Passenger Visor Vanity Mirrors- Driver Foot Rest- Driver Seat</li> <li>- Dual Zone Front Automatic Air Conditioning- Engine Immobilizer</li> <li>- Fixed Rear Head Restraints- Fixed Rear Windows- Front Cupholder- Front Map Lights</li> <li>- Full Carpet Floor Covering -inc: Carpet Front And Rear Floor Mats - Full Cloth Headliner</li> <li>- Full Floor Console w/Storage and 2 12V DC Power Outlets</li> <li>- Full Folding Bench Front Facing Fold Forward Seatback Rear Seat - Glove Box</li> <li>- Instrument Panel Bin, Driver And Passenger Door Bins</li> <li>- Interior Trim -inc: Simulated Suede Instrument Panel Insert, Leather/Metal-Look Door Panel Insert, Metal-Look Console Insert, Metal-Look Interior Accents and Granlux Simulated Suede Upholstered Dashboard</li> <li>- Leather/Aluminum Gear Shift Knob- Leather/Metal-Look Steering Wheel</li> <li>- Manual Tilt/Telescoping Steering Column- Outside Temp Gauge</li> <li>- Passenger Seat -inc: Manual Rear Seat Easy Entry - Perimeter Alarm</li> <li>- Power 1st Row Windows w/Driver And Passenger 1-Touch Up/Down</li> <li>- Redundant Digital Speedometer</li> <li>- Remote Releases -Inc: Power Cargo Access and Mechanical Fuel</li> <li>- Seats w/Leatherette Back Material- Simulated Suede Door Trim Insert</li> <li>- Sport Bucket Seats -inc: 6-way height adjustable driver seat and 4-way front passenger seat w/integrated headrests</li> <li>- Valet Function</li> </ul> | <b>Factory Installed Packages</b> <table> <tr> <td>ALL-WEATHER FLOOR MATS</td><td>\$149</td></tr> <tr> <td>ALLOY WHEEL LOCKS</td><td>\$65</td></tr> <tr> <td>CARGO TOTE</td><td>\$49</td></tr> <tr> <td>CENTER ARM REST</td><td>\$189</td></tr> <tr> <td>COIN HOLDER/ASHTRAY CUP</td><td>\$29</td></tr> <tr> <td>DISPLAY AUDIO W/NAVIGATION</td><td>\$900</td></tr> <tr> <td>PAINT PROTECTION FILM<br/>-inc: For hood, fenders, mirror backs and door cups</td><td>\$395</td></tr> <tr> <td>PROTECTION PACKAGE<br/>-inc: Carpet Trunk Mat, Rear Bumper Applique</td><td>\$144</td></tr> <tr> <td>REAR BUMPER APPLIQUE</td><td>\$69</td></tr> <tr> <td>STEEL</td><td></td></tr> </table> | ALL-WEATHER FLOOR MATS | \$149 | ALLOY WHEEL LOCKS | \$65 | CARGO TOTE | \$49 | CENTER ARM REST | \$189 | COIN HOLDER/ASHTRAY CUP | \$29 | DISPLAY AUDIO W/NAVIGATION | \$900 | PAINT PROTECTION FILM<br>-inc: For hood, fenders, mirror backs and door cups | \$395 | PROTECTION PACKAGE<br>-inc: Carpet Trunk Mat, Rear Bumper Applique | \$144 | REAR BUMPER APPLIQUE | \$69 | STEEL |  |
| ALL-WEATHER FLOOR MATS  | \$149   |                        |       |                   |      |            |      |                 |       |                         |      |                            |       |  |       |  |       |                      |      |       |  |
| ALLOY WHEEL LOCKS   | \$65  |                        |       |                   |      |            |      |                 |       |                         |      |                            |       |  |       |  |       |                      |      |       |  |
| CARGO TOTE  | \$49  |                        |       |                   |      |            |      |                 |       |                         |      |                            |       |  |       |  |       |                      |      |       |  |
| CENTER ARM REST   | \$189   |                        |       |                   |      |            |      |                 |       |                         |      |                            |       |  |       |  |       |                      |      |       |  |
| COIN HOLDER/ASHTRAY CUP   | \$29  |                        |       |                   |      |            |      |                 |       |                         |      |                            |       |  |       |  |       |                      |      |       |  |
| DISPLAY AUDIO W/NAVIGATION  | \$900   |                        |       |                   |      |            |      |                 |       |                         |      |                            |       |  |       |  |       |                      |      |       |  |
| PAINT PROTECTION FILM<br>-inc: For hood, fenders, mirror backs and door cups  | \$395   |                        |       |                   |      |            |      |                 |       |                         |      |                            |       |  |       |  |       |                      |      |       |  |
| PROTECTION PACKAGE<br>-inc: Carpet Trunk Mat, Rear Bumper Applique  | \$144   |                        |       |                   |      |            |      |                 |       |                         |      |                            |       |  |       |  |       |                      |      |       |  |
| REAR BUMPER APPLIQUE  | \$69  |                        |       |                   |      |            |      |                 |       |                         |      |                            |       |  |       |  |       |                      |      |       |  |
| STEEL   |   |                        |       |                   |      |            |      |                 |       |                         |      |                            |       |  |       |  |       |                      |      |       |  |
| <b>Exterior</b>   |   |                        |       |                   |      |            |      |                 |       |                         |      |                            |       |  |       |  |       |                      |      |       |  |

- Tailgate/Rear Door Lock Included w/Power Door Locks- Tires: 215/45R17 87W Summer
- Wheels: 17" x 7 Twisted-Spoke Alloy- Black Grille- Black Side Windows Trim
- Body-Colored Door Handles- Body-Colored Front Bumper w/Black Bumper Insert
- Body-Colored Power Heated Side Mirrors w/Manual Folding
- Body-Colored Rear Bumper w/Black Rub Strip/Fascia Accent- Clearcoat Paint
- Compact Spare Tire Mounted Inside Under Cargo- Fixed Rear Window w/Defroster
- Front Fog Lamps
- Fully Automatic Projector Beam Led Low/High Beam Daytime Running Auto-Leveling Headlamps w/Delay-Off
- Galvanized Steel/Aluminum Panels- LED Brakelights- Light Tinted Glass
- Steel Spare Wheel- Trunk Rear Cargo Access- Variable Intermittent Wipers
- Wing Spoiler

## Safety

- FOB Controls -inc: Trunk/Hatch/Tailgate
- Gauges -inc: Speedometer, Odometer, Voltmeter, Engine Coolant Temp, Tachometer, Oil Temperature, Trip Odometer and Trip Computer
- Leather Seat Material- Power Door Locks
- Proximity Key For Doors And Push Button Start
- Remote Keyless Entry w/Integrated Key Transmitter, Illuminated Entry, Illuminated Ignition Switch and Panic Button
- Trip Computer- 1 Seatback Storage Pocket- 2 12V DC Power Outlets- Air Filtration
- Cargo Area Concealed Storage- Cargo Space Lights- Carpet Floor Trim
- Cruise Control w/Steering Wheel Controls- Day-Night Auto-Dimming Rearview Mirror
- Delay Off Interior Lighting- Delayed Accessory Power- Digital/Analog Display
- Driver And Passenger Heated-Cushion, Driver And Passenger Heated-Seatback
- Driver And Passenger Visor Vanity Mirrors- Driver Foot Rest- Driver Seat
- Dual Zone Front Automatic Air Conditioning- Engine Immobilizer
- Fixed Rear Head Restraints- Fixed Rear Windows- Front Cupholder- Front Map Lights
- Full Carpet Floor Covering -inc: Carpet Front And Rear Floor Mats- Full Cloth Headliner
- Full Floor Console w/Storage and 2 12V DC Power Outlets
- Full Folding Bench Front Facing Fold Forward Seatback Rear Seat - Glove Box
- Instrument Panel Bin, Driver And Passenger Door Bins
- Interior Trim -inc: Simulated Suede Instrument Panel Insert, Leather/Metal-Look Door Panel Insert, Metal-Look Console Insert, Metal-Look Interior Accents and Granlux Simulated Suede Upholstered Dashboard
- Leather/Aluminum Gear Shift Knob- Leather/Metal-Look Steering Wheel
- Manual Tilt/Telescoping Steering Column- Outside Temp Gauge
- Passenger Seat -inc: Manual Rear Seat Easy Entry - Perimeter Alarm
- Power 1st Row Windows w/Driver And Passenger 1-Touch Up/Down
- Redundant Digital Speedometer
- Remote Releases -Inc: Power Cargo Access and Mechanical Fuel
- Seats w/Leatherette Back Material- Simulated Suede Door Trim Insert
- Sport Bucket Seats -inc: 6-way height adjustable driver seat and 4-way front passenger seat w/integrated headrests
- Valet Function

## Mechanical

- 13.2 Gal. Fuel Tank- 130 Amp Alternator
- 4-Wheel Disc Brakes w/4-Wheel ABS, Front And Rear Vented Discs, Brake Assist and Hill Hold Control
- 48-Amp/Hr 390CCA Maintenance-Free Battery
- Double Wishbone Rear Suspension w/Coil Springs- Electric Power-Assist Steering
- Engine: 2.0L 4-Cyl DOHC D-4S Injection w/AT- Front And Rear Anti-Roll Bars
- Gas-Pressurized Shock Absorbers- Mechanical Limited Slip Differential
- Quasi-Dual Stainless Steel Exhaust w/Chrome Tailpipe Finisher- Rear-Wheel Drive
- Sport Tuned Suspension- Strut Front Suspension w/Coil Springs
- Transmission: 6-Speed ECT-i Automatic

## Option Packages Total

\$1,989

The Car Liquidators

The Car Liquidators

View this car on our website at [thecarliquidators.com/6697552](http://thecarliquidators.com/6697552)

Website: [thecarliquidators.com](http://thecarliquidators.com)

Phone: 855-842-4152

Map: 930 Carter Rd Ste 316, Wintergarden, FL 34787

