

# 2019 Ford F-150 XLT

View this car on our website at [askjorgelopez.com/6697107/ebrochure](http://askjorgelopez.com/6697107/ebrochure)

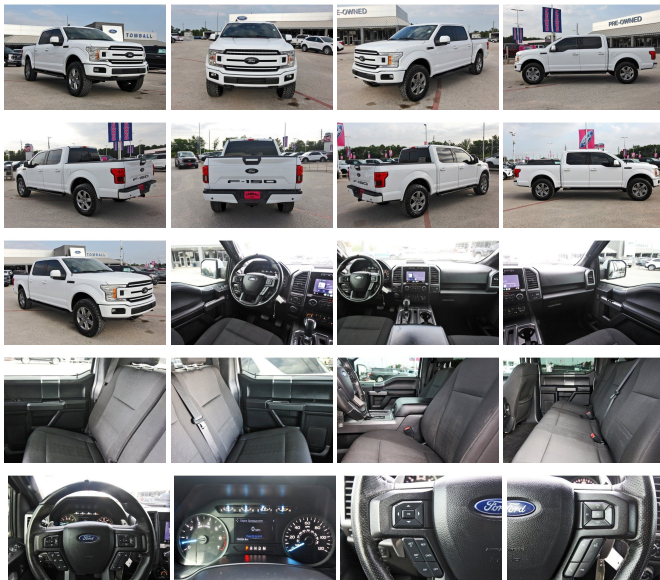


Our Price **\$26,498**

## Specifications:

<b>Year:</b>	2019
<b>VIN:</b>	1FTEW1E51KKE76098
<b>Make:</b>	Ford
<b>Stock:</b>	KKE76098
<b>Model/Trim:</b>	F-150 XLT
<b>Condition:</b>	Pre-Owned
<b>Body:</b>	Pickup Truck
<b>Exterior:</b>	OXFORD WHITE
<b>Engine:</b>	ENGINE: 5.0L V8
<b>Interior:</b>	Black Cloth
<b>Mileage:</b>	103,442
<b>Drivetrain:</b>	4 Wheel Drive
<b>Economy:</b>	City 16 / Highway 22

Come see this 2019 Ford F-150 . Its Automatic transmission and Regular Unleaded V8 5.0 L engine will keep you going. This Ford F-150 comes equipped with these options: ENGINE: 5.0L V8 -inc: auto start-stop technology and flex-fuel capability, GVWR: 7,000 lbs Payload Package, 3.31 Axle Ratio, Transmission w/SelectShift Sequential Shift Control, Towing Equipment -inc: Trailer Sway Control, Tire Specific Low Tire Pressure Warning, Tailgate Rear Cargo Access, Steel Spare Wheel, Solid Axle Rear Suspension w/Leaf Springs, Side Impact Beams, Securilock Anti-Theft Ignition (pats) Immobilizer, and Safety Canopy System Curtain 1st And 2nd Row Airbags. See it for yourself at Tomball Ford, 22702 Tomball Parkway, Tomball, TX 77375.



2019 Ford F-150 XLT

Ask Jorge Lopez - 281-205-0352 - View this car on our website at [askjorgelopez.com/6697107/ebrochure](http://askjorgelopez.com/6697107/ebrochure)

## Vehicle History Report : as Of 05/14/2024



### Snapshot

2019 FORD F-150 XLT



Damage reported: airbag deployed



31 Service history records



CARFAX 1-Owner vehicle



Personal vehicle



Last owned in Texas



103,437 Last reported odometer reading



**FREE CARFAX Report**

See the full CARFAX Report for additional information

\*carfax Snapshot is a reflection of available information on the date the report was pulled. carfax is constantly being updated with new information and is subject to change at any time.

## Our Location :



2019 Ford F-150 XLT

Ask Jorge Lopez - 281-205-0352 - View this car on our website at [askjorgelopez.com/6697107/ebrochure](http://askjorgelopez.com/6697107/ebrochure)

## Installed Options

### Interior

- Cloth 40/20/40 Front Seat -inc: 4-way adjustable driver/passenger headrests, manual driver/passenger lumbar and armrest w/storage
- Power Rear Windows
- Remote Keyless Entry w/Integrated Key Transmitter, Illuminated Entry and Panic Button
- Full Carpet Floor Covering -inc: Carpet Front And Rear Floor Mats
- Smart Device Remote Engine Start
- SYNC 3 -inc: enhanced voice recognition communications and entertainment system, 8" LCD capacitive touchscreen in center stack w/swipe capability, pinch-to-zoom capability included when equipped w/available voice-activated touchscreen navigation system, AppLink, 911 Assist, Apple CarPlay and Android Auto and 2 smart charging USB ports, Note: SYNC AppLink lets you control some of your favorite compatible mobile apps w/your voice, It is compatible w/select smartphone platforms, Commands may vary by phone and AppLink software
- Power 1st Row Windows w/Driver And Passenger 1-Touch Up/Down
- Power Door Locks w/Autolock Feature
- 4-Way Driver Seat -inc: Manual Recline and Fore/Aft Movement
- 4-Way Passenger Seat -inc: Manual Recline and Fore/Aft Movement
- 60-40 Folding Split-Bench Front Facing Fold-Up Cushion Rear Seat
- Manual Tilt/Telescoping Steering Column

## Option Packages

### Factory Installed Packages

ENGINE: 5.0L V8 -inc: auto start-stop technology and flex-fuel capability, GVWR: 7,000 lbs Payload Package, 3.31 Axle Ratio	\$1,995
<b>Option Packages Total</b>	<b>\$1,995</b>

- Gauges -inc: Speedometer, Odometer, Voltmeter, Oil Pressure, Engine Coolant Temp, Tachometer, Transmission Fluid Temp and Trip Odometer
- FordPass Connect 4G LTE WiFi Mobile Hotspot Internet Access- Front Cupholder
- Rear Cupholder- Compass- Keypad- Cruise Control w/Steering Wheel Controls
- Manual Air Conditioning- HVAC -inc: Underseat Ducts- Glove Box- Full Cloth Headliner
- Urethane Gear Shift Knob
- Interior Trim -inc: Metal-Look Instrument Panel Insert, Cabback Insulator and Chrome Interior Accents
- Day-Night Rearview Mirror- Driver And Passenger Visor Vanity Mirrors
- 3 12V DC Power Outlets- Fade-To-Off Interior Lighting- Pickup Cargo Box Lights
- Instrument Panel Bin, Dashboard Storage, Driver / Passenger And Rear Door Bins and 1st Row Underseat Storage
- Delayed Accessory Power- Outside Temp Gauge- Analog Display
- 2 Seatback Storage Pockets- Manual Adjustable Rear Head Restraints
- Securilock Anti-Theft Ignition (pats) Engine Immobilizer- Perimeter Alarm

---

## Exterior

- Wheels: 17" Silver Painted Aluminum- Tires: P265/70R17 OWL A/T
- Full-Size Spare Tire Stored Underbody w/Crankdown
- Chrome Front Bumper w/Body-Colored Rub Strip/Fascia Accent and 2 Tow Hooks
- Black Power Side Mirrors w/Convex Spotter and Manual Folding- Deep Tinted Glass
- Tailgate/Rear Door Lock Included w/Power Door Locks
- Fully Automatic Aero-Composite Halogen Auto High-Beam Daytime Running Lights Preference Setting Headlamps w/Delay-Off
- Regular Box Style- Steel Spare Wheel- Clearcoat Paint- Chrome Rear Step Bumper
- Black Side Windows Trim and Black Front Windshield Trim - Black Door Handles
- Fixed Rear Window- Variable Intermittent Wipers- Aluminum Panels- Chrome Grille
- Tailgate Rear Cargo Access- Cargo Lamp w/High Mount Stop Light- Front Fog Lamps
- Perimeter/Approach Lights

---

## Safety

- Cloth 40/20/40 Front Seat -inc: 4-way adjustable driver/passenger headrests, manual driver/passenger lumbar and armrest w/storage
- Power Rear Windows
- Remote Keyless Entry w/Integrated Key Transmitter, Illuminated Entry and Panic Button
- Full Carpet Floor Covering -inc: Carpet Front And Rear Floor Mats
- Smart Device Remote Engine Start
- SYNC 3 -inc: enhanced voice recognition communications and entertainment system, 8" LCD capacitive touchscreen in center stack w/swipe capability, pinch-to-zoom capability included when equipped w/available voice-activated touchscreen navigation system, AppLink, 911 Assist, Apple CarPlay and Android Auto and 2 smart charging USB ports, Note: SYNC AppLink lets you control some of your favorite compatible mobile apps w/your voice. It is compatible w/select smartphone platforms. Commands may vary by phone and AppLink software
- Power 1st Row Windows w/Driver And Passenger 1-Touch Up/Down
- Power Door Locks w/Autolock Feature
- 4-Way Driver Seat -inc: Manual Recline and Fore/Aft Movement
- 4-Way Passenger Seat -inc: Manual Recline and Fore/Aft Movement
- 60-40 Folding Split-Bench Front Facing Fold-Up Cushion Rear Seat
- Manual Tilt/Telescoping Steering Column
- Gauges -inc: Speedometer, Odometer, Voltmeter, Oil Pressure, Engine Coolant Temp, Tachometer, Transmission Fluid Temp and Trip Odometer
- FordPass Connect 4G LTE WiFi Mobile Hotspot Internet Access- Front Cupholder
- Rear Cupholder- Compass- Keypad- Cruise Control w/Steering Wheel Controls
- Manual Air Conditioning- HVAC -inc: Underseat Ducts- Glove Box- Full Cloth Headliner
- Urethane Gear Shift Knob
- Interior Trim -inc: Metal-Look Instrument Panel Insert, Cabback Insulator and Chrome Interior Accents
- Day-Night Rearview Mirror- Driver And Passenger Visor Vanity Mirrors
- 3 12V DC Power Outlets- Fade-To-Off Interior Lighting- Pickup Cargo Box Lights
- Instrument Panel Bin, Dashboard Storage, Driver / Passenger And Rear Door Bins and 1st Row Underseat Storage
- Delayed Accessory Power- Outside Temp Gauge- Analog Display
- 2 Seatback Storage Pockets- Manual Adjustable Rear Head Restraints
- Securilock Anti-Theft Ignition (pats) Engine Immobilizer- Perimeter Alarm

---

## Mechanical

- Engine: 3.3L V6 PFDI -inc: auto start-stop technology and flex-fuel capability
- Transmission: Electronic 6-Speed Automatic -inc: selectable drive modes: normal/tow-haul/sport
- Transmission w/SelectShift Sequential Shift Control- 3.73 Axle Ratio
- GVWR: 6,500 lbs Payload Package- Electronic Transfer Case
- Part-Time Four-Wheel Drive

- 70-Amp/Hr 610CCA Maintenance-Free Battery w/Run Down Protection
  - 200 Amp Alternator- Towing Equipment -inc: Trailer Sway Control- Trailer Wiring Harness
  - 1680lbs. Maximum Payload- Gas-Pressurized Shock Absorbers- Front Anti-Roll Bar
  - Electric Power-Assist Speed-Sensing Steering- Single Stainless Steel Exhaust
  - 26 Gal. Fuel Tank- Auto Locking Hubs
  - Double Wishbone Front Suspension w/Coil Springs
  - Leaf Rear Suspension w/Leaf Springs
  - 4-Wheel Disc Brakes w/4-Wheel ABS, Front And Rear Vented Discs, Brake Assist, Hill Hold Control and Electric Parking Brake
- 

Ask Jorge Lopez

[askjorgelopez.com](http://askjorgelopez.com)

281-205-0352

22702 Tomball Parkway

Tomball, TX 77375

© 2024 AutoRevo - All rights reserved. - Powered by AutoRevo