

2018 Ford F-250 King Ranch 4X4 LIFTED, ROOF, 360 CAM, FUEL WHLS, 35K

View this car on our website at tveauto.com/6696986/ebrochure



Our Price **\$64,888**

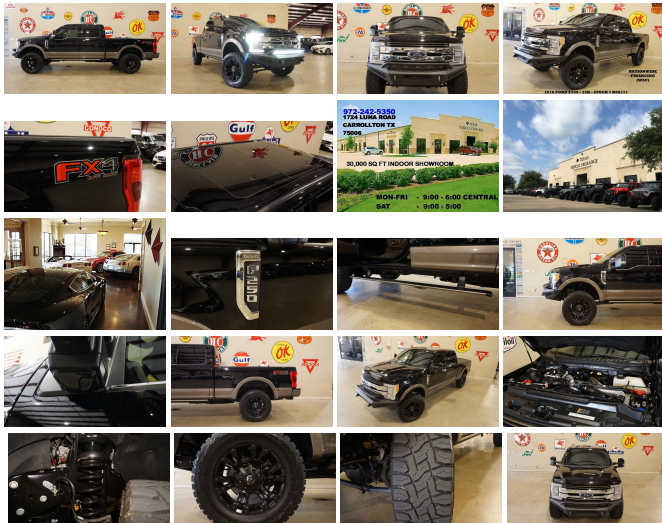
Specifications:

Year:	2018
VIN:	1FT7W2BT4JEB08271
Make:	Ford
Stock:	B08271
Model/Trim:	F-250 King Ranch 4X4 LIFTED, ROOF, 360 CAM, FUEL WHLS, 35K
Condition:	Pre-Owned
Body:	Pickup Truck
Exterior:	Shadow Black
Engine:	ENGINE: 6.7L 4V OHV POWER STROKE V8 TURBO DIESEL B20
Interior:	Java Leather
Transmission:	TRANSMISSION: TORQSHIFT 6-SPEED AUTOMATIC
Mileage:	35,340
Drivetrain:	4 Wheel Drive

NATION WIDE FINANCING

SUBMIT CREDIT APP WWW.TVEAUTO.COM

OR CALL 972-242-5350




2018 FORD F250 KING RANCH CREW-CAB
4X4, 6.7L V8 TURBO DIESEL ENGINE,
AUTOMATIC TRANSMISSION, ONLY 35K,
SHADOW BLACK W/BROWN LEATHER
INTERIOR, CARFAX REPORTS 1 OWNER NO
ACCIDENTS, APPEARS TO BE A NON-
SMOKER, REMOTE START, ADDICTIVE
DESERT DESIGNS HONEYBADGER FRONT
BUMPER WITH LED LIGHT BAR, APPROX
2.5" LEVEL KIT, TWIN PANEL MOONROOF,
NAVIGATION, BACK-UP CAMERA, CARGO
CAMERA, 360 VIEW CAMERAS, POWER

RETRACTABLE RUNNING BOARDS, POWER WINDOWS, POWER DOOR LOCKS, POWER FOLDING & TELESCOPING TRAILER TOWING HEATED MIRRORS WITH TURN SIGNALS, BLIND SPOT CONTROL, POWER & HEATED TILT/TELESCOPE STEERING WHEEL WITH AUDIO & CRUISE CONTROLS, DUAL POWER HEATED & COOLED FRONT SEATS WITH DRIVER 3 MEMORY POSITION, POWER ADJUSTABLE PEDALS, LANE ASSIST, TRACTION CONTROL, HILL DESCENT CONTROL, TRAILER BRAKE CONTROLLER, UPFITTER SWITCHES, ICE COLD A/C, DUAL CLIMATE CONTROL, SONY HD AM/FM/SIRIUS STEREO WITH CD PLAYER, MICROSOFT SYNC VOICE ACTIVATED SYSTEM, SELF DIMMING REAR VIEW MIRROR, HOMELINK GARAGE CONTROLS, DUAL LIGHTED VANITY MIRRORS, REAR HEATED SEATS, REAR A/C VENTS, POWER SLIDING REAR WINDOW, BED COVER, TAILGATE STEP, REAR PARK DISTANCE SENSORS, TOW PACKAGE WITH RECEIVER HITCH, FLOOR MATS, OWNER'S MANUAL, 1 KEY/1 REMOTE, 20" FUEL BLACK VAPOR WHEELS, FRONT TIRES ARE TOYO OPEN COUNTRY R/T 35X12.50R/20 WITH APPROX 40% TREAD LIFE REMAINING, REAR TIRES ARE TOYO OPEN COUNTRY R/T 35X12.50R/20 WITH APPROX 40% TREAD LIFE REMAINING. RUNS AND DRIVES GREAT. GIVE US A CALL @ 972-242-5350 OR STOP BY FOR A TEST DRIVE. 1724 LUNA RD IN CARROLLTON - 2 MILES NORTH OF 635. CLICK ON CARFAX ICON TO VIEW A FULL REPORT AT NO COST TO YOU.







2018 Ford F-250 King Ranch 4X4 LIFTED,ROOF,360 CAM,FUEL WHLS,35K


Texas Vehicle Exchange - 972-242-5350 - View this car on our website at veauto.com/6696986/ebrochure

Vehicle History Report : as Of 11/21/2019

 Snapshot

2018 FORD F250 SUPER DUTY

	No accidents reported to CARFAX
	No damage reported to CARFAX
	CARFAX 1-Owner vehicle
	At least 1 open recall
	2 Service history records
	35,340 Last reported odometer reading



FREE CARFAX Report

See the full CARFAX Report for additional information

*carfax Snapshot is a reflection of available information on the date the report was pulled. carfax is constantly being updated with new information and is subject to change at any time.

Our Location :



2018 Ford F-250 King Ranch 4X4 LIFTED,ROOF,360 CAM,FUEL WHLS,35K

Texas Vehicle Exchange - 972-242-5350 - View this car on our website at veauto.com/6696986/ebrochure

Installed Options

Interior

- 110V/400W Outlet -inc: 1 in-dash mounted outlet and 2nd outlet in the console
- 2 Seatback Storage Pockets
- 60-40 Folding Split-Bench Front Facing Fold-Up Cushion Rear Seat - Air Filtration
- Cruise Control w/Steering Wheel Controls- Day-Night Auto-Dimming Rearview Mirror
- Delayed Accessory Power- Door Mirrors, Steering Wheel and Pedals
- Driver And Passenger Visor Vanity Mirrors w/Driver And Passenger Illumination
- Driver Seat- FOB Controls -inc: Trunk/Hatch/Tailgate and Remote Engine Start
- Fade-To-Off Interior Lighting- Flow-Through Console -inc: 110V/400W outlet in rear
- Front And Rear Map Lights- Front Cupholder
- Full Carpet Floor Covering -inc: Carpet Front And Rear Floor Mats - Full Cloth Headliner
- Full Overhead Console w/Storage- Garage Door Transmitter
- Gauges -inc: Speedometer, Odometer, Oil Pressure, Engine Coolant Temp, Tachometer, Transmission Fluid Temp, Engine Hour Meter, Trip Odometer and Trip Computer
- HVAC -inc: Underseat Ducts and Console Ducts
- Heated Leather Steering Wheel w/Auto Tilt-Away- Illuminated Locking Glove Box
- Instrument Panel Covered Bin, Dashboard Storage, Driver / Passenger And Rear Door Bins
- Integrated Navigation System w/Voice Activation
- Interior Trim -inc: Metal-Look Instrument Panel Insert, Genuine Wood/Chrome Door Panel Insert, Genuine Wood/Leather Console Insert and Chrome/Metal-Look Interior Accents
- Keypad- Leather Door Trim Insert- Manual Adjustable Rear Head Restraints
- Outside Temp Gauge- Passenger Seat- Perimeter Alarm
- Power 1st Row Windows w/Driver And Passenger 1-Touch Up/Down
- Power Adjustable Pedals- Power Door Locks w/Autolock Feature- Power Rear Windows
- Power Tilt/Telescoping Steering Column- Proximity Key For Doors And Push Button Start
- Rear Center Armrest- Rear Cupholder
- Remote Keyless Entry w/Integrated Key Transmitter, Illuminated Entry and Panic Button
- Securilock Anti-Theft Ignition (pats) Engine Immobilizer- Systems Monitor- Trip Computer
- Underhood And Pickup Cargo Box Lights

- Unique King Ranch Leather 40/Console/40 Front Seats -inc: Kingsville Antique Affect leather seating surfaces w/matching 60/40 rear bench w/partitioned locking under-seat storage, 12V powerpoint, dual integrated cupholders in armrest, 2 outboard head restraints, 10-way power (includes power lumbar), memory, easy-entry/exit driver's seat and heated/cooled driver and passenger seating
- Urethane Gear Shift Knob
- Voice Activated Dual Zone Front Automatic Air Conditioning w/Steering Wheel Controls

Exterior

- Aluminum Panels- Black Side Windows Trim and Black Front Windshield Trim
- Body-Colored Door Handles- Body-Colored Grille w/Chrome Accents
- Body-Colored Power Heated Side Mirrors w/Convex Spotter, Power Folding and Turn Signal Indicator
- Cargo Lamp w/High Mount Stop Light- Clearcoat Paint- Colored Bodyside Cladding
- Colored Front Bumper w/2 Tow Hooks- Colored Rear Step Bumper- Deep Tinted Glass
- Front Fog Lamps- Front License Plate Bracket
- Full-Size Spare Tire Stored Underbody w/Crankdown
- Fully Automatic Aero-Composite Halogen Auto High-Beam Daytime Running Lights Preference Setting Headlamps w/Delay-Off
- Illuminated Running Boards- Perimeter/Approach Lights
- Power Extendable Trailer Style Mirrors- Power Rear Window w/Defroster
- Rain Detecting Variable Intermittent Wipers- Regular Box Style- Steel Spare Wheel
- Tailgate Rear Cargo Access- Tailgate/Rear Door Lock Included w/Power Door Locks
- Tires: LT275/65Rx18E BSW A/S
- Wheels: 18" Bright Machined Cast Aluminum -inc: magnetic painted pockets and light caribou wheel ornaments w/King Ranch logo

Safety

- 110V/400W Outlet -inc: 1 in-dash mounted outlet and 2nd outlet in the console
- 2 Seatback Storage Pockets
- 60-40 Folding Split-Bench Front Facing Fold-Up Cushion Rear Seat - Air Filtration
- Cruise Control w/Steering Wheel Controls- Day-Night Auto-Dimming Rearview Mirror
- Delayed Accessory Power- Door Mirrors, Steering Wheel and Pedals
- Driver And Passenger Visor Vanity Mirrors w/Driver And Passenger Illumination
- Driver Seat- FOB Controls -inc: Trunk/Hatch/Tailgate and Remote Engine Start
- Fade-To-Off Interior Lighting- Flow-Through Console -inc: 110V/400W outlet in rear
- Front And Rear Map Lights- Front Cupholder
- Full Carpet Floor Covering -inc: Carpet Front And Rear Floor Mats - Full Cloth Headliner
- Full Overhead Console w/Storage- Garage Door Transmitter
- Gauges -inc: Speedometer, Odometer, Oil Pressure, Engine Coolant Temp, Tachometer, Transmission Fluid Temp, Engine Hour Meter, Trip Odometer and Trip Computer
- HVAC -inc: Underseat Ducts and Console Ducts
- Heated Leather Steering Wheel w/Auto Tilt-Away- Illuminated Locking Glove Box
- Instrument Panel Covered Bin, Dashboard Storage, Driver / Passenger And Rear Door Bins
- Integrated Navigation System w/Voice Activation
- Interior Trim -inc: Metal-Look Instrument Panel Insert, Genuine Wood/Chrome Door Panel Insert, Genuine Wood/Leather Console Insert and Chrome/Metal-Look Interior Accents
- Keypad- Leather Door Trim Insert- Manual Adjustable Rear Head Restraints
- Outside Temp Gauge- Passenger Seat- Perimeter Alarm
- Power 1st Row Windows w/Driver And Passenger 1-Touch Up/Down
- Power Adjustable Pedals- Power Door Locks w/Autolock Feature- Power Rear Windows
- Power Tilt/Telescoping Steering Column- Proximity Key For Doors And Push Button Start
- Rear Center Armrest- Rear Cupholder
- Remote Keyless Entry w/Integrated Key Transmitter, Illuminated Entry and Panic Button
- Securilock Anti-Theft Ignition (pats) Engine Immobilizer- Systems Monitor- Trip Computer
- Underhood And Pickup Cargo Box Lights
- Unique King Ranch Leather 40/Console/40 Front Seats -inc: Kingsville Antique Affect leather seating surfaces w/matching 60/40 rear bench w/partitioned locking under-seat storage, 12V powerpoint, dual integrated cupholders in armrest, 2 outboard head restraints, 10-way power (includes power lumbar), memory, easy-entry/exit driver's seat and heated/cooled driver and passenger seating
- Urethane Gear Shift Knob
- Voice Activated Dual Zone Front Automatic Air Conditioning w/Steering Wheel Controls

Mechanical

- 3.73 Axle Ratio- 34 Gal. Fuel Tank- 3470lbs. Maximum Payload
- 4-Wheel Disc Brakes w/4-Wheel ABS, Front And Rear Vented Discs, Brake Assist and Hill Hold Control
- 50-State Emissions System
- 78-Amp/Hr 750CCA Maintenance-Free Battery w/Run Down Protection
- Auto Locking Hubs
- Class V Towing Equipment -inc: Hitch, Brake Controller and Trailer Sway Control
- Electronic Transfer Case

- Electronic Transfer Case
- Engine: 6.2L 2-Valve SOHC EFI NA V8 Flex-Fuel -inc: Flex-Fuel badge on fleet orders only
- Firm Suspension- Front Anti-Roll Bar- Front Suspension w/Coil Springs
- GVWR: 10,000 lb Payload Package- HD 200 Amp Alternator- HD Shock Absorbers
- Hydraulic Power-Assist Steering- Leaf Rear Suspension w/Leaf Springs
- Part-Time Four-Wheel Drive- Single Stainless Steel Exhaust- Trailer Wiring Harness
- Transmission w/Oil Cooler- Transmission: TorqShift-G 6-Spd Auto w/SelectShift

Option Packages

Factory Installed Packages

ENGINE: 6.7L 4V OHV POWER STROKE V8 TURBO DIESEL B20

- inc: manual push-button engine-exhaust braking and intelligent oil-life monitor, Extra Heavy-Duty 220 Amp Alternator, 34 Gallon Fuel Tank, 3.31 Axle Ratio, Dual 78-AH 750 CCA Batteries

\$9,120

TRANSMISSION: TORQSHIFT 6-SPEED AUTOMATIC

- inc: (6R140), SelectShift

FX4 OFF-ROAD PACKAGE

- inc: Hill Descent Control, Off-Road Specifically Tuned Shock Absorbers, front/rear, Transfer Case & Fuel Tank Skid Plates, Unique FX4 Off-Road Box Decal

\$400

HEATED REAR SEATS

\$300

KING RANCH ULTIMATE PACKAGE

- inc: Twin Panel Power Moonroof, map lights and moonroof switches, Blind Spot Information System (BLIS), cross-traffic alert and trailer tow (BLIS sensor in taillamp), Tailgate Step & Handle, Quad Beam LED Headlamps & LED Taillamps, LED fog lamps and LED Center High-Mounted Stop Lamp (CHMSL), Power-Deployable Running Boards, Multi-Contour Seats

\$3,075

TOW TECHNOLOGY BUNDLE

- inc: Ultimate Trailer Tow Camera System, 360 degree camera system and trailer reverse guidance, Display appears in center-stack screen, NOTE: Does not include customer placed trailer camera, Rear CHMSL Camera Display in center stack screen, LED Center High-Mounted Stop Lamp (CHMSL) w/cargo light and rear video camera, Adaptive Steering, Lane-Keeping Alert

\$2,150

UPFITTER SWITCHES (6)

- inc: Located in overhead console

\$165

SHADOW BLACK

JAVA, UNIQUE KING RANCH LEATHER 40/CONSOLE/40 FRONT SEATS

- inc: Kingsville Antique Affect leather seating surfaces w/matching 60/40 rear bench w/partitioned locking under-seat storage, 12V powerpoint, dual integrated cupholders in armrest, 2 outboard head restraints, 10-way power

(includes power lumbar),
memory, easy-entry/exit
driver's seat and heated/cooled
driver and passenger seating

-
Option Packages Total
\$15,210

Texas Vehicle Exchange

tveauto.com

972-242-5350

1724 Luna Road

Carrollton, TX 75006

© 2019 AutoRevo - All rights reserved. - Powered by AutoRevo