



2018 Audi Q5 Premium Plus

Khristian Cayias

Our Price \$29,911

View this vehicle on our website at gpmotorz.com

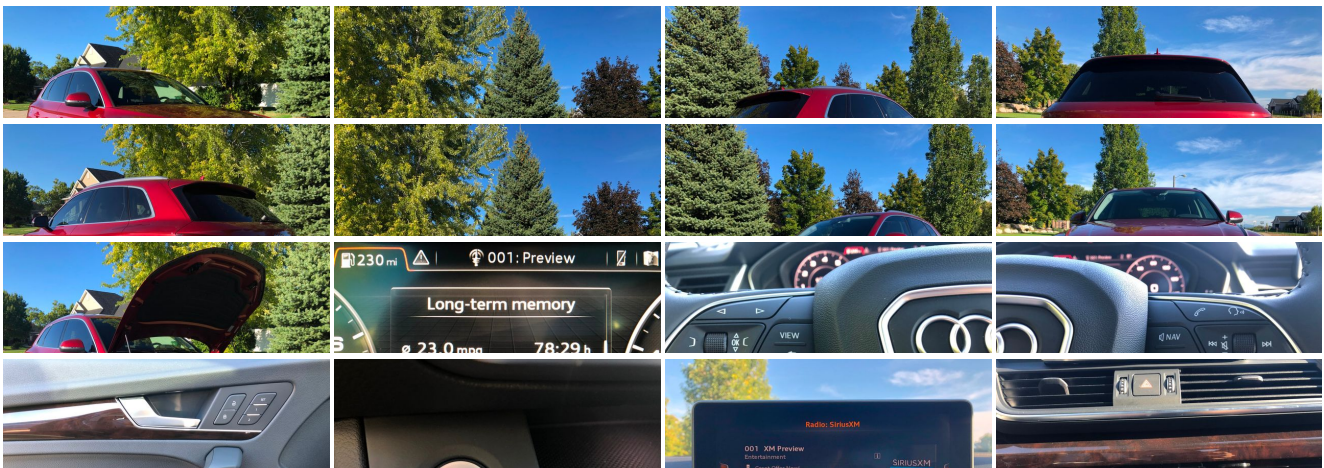
GP Motor Company

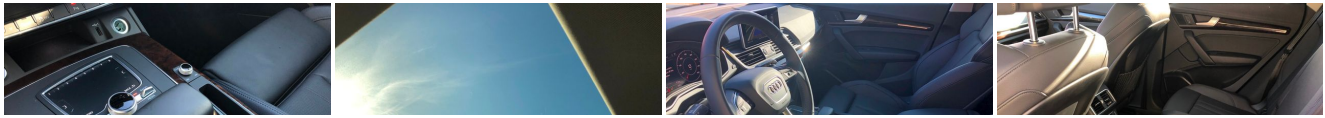
420 N Kays Dr , Kaysville, UT 84037

Photos

Details

Contact





Specifications:

| | |
|--------------------|--|
| Year: | 2018 |
| VIN: | WA1BNAFY5J2209179 |
| Make: | Audi |
| Stock: | 209179 |
| Model/Trim: | Q5 Premium Plus |
| Condition: | Pre-Owned |
| Body: | SUV |
| Exterior: | Red |
| Engine: | Engine: 2.0L TFSI Direct-Injection DOHC 4 Cylinder -inc: Audi valvelift system |
| Interior: | Black Leather |
| Mileage: | 4,338 |
| Drivetrain: | All Wheel Drive |
| Economy: | City 23 / Highway 27 |

Vehicle Description

Great looking clean title 2018 Audi Q5 2.0T Quattro Premium AWD for sale! This vehicle is in great mechanical condition and runs and drives like a brand new car! The Audi Q5 is a luxurious car that has a lot of space for passengers. The Q5 Premium comes with tons of great features like the nice radio display, back up camera, interactive dash display, Bluetooth with hands free calling, cruise control, navigation, push button start, AUX input, USB input, AM/FM radio, dual climate control, nice looking heated interior, sunroof, seat memory, power mirrors, power locks, and power windows The car was caught in a hail storm and does have some dings on it which is why I have it priced so well. Give me a call or shoot me a text if you would like to come check it out. 247A

Installed Options

Interior

- 3-Step Heated Front Seats
- 8-Way Power Front Bucket Seats -inc: 4-way driver power lumbar adjustment and driver and front-passenger comfort head rests
- Dual Zone Front Automatic Air Conditioning
- Full Carpet Floor Covering -inc: Carpet Front And Rear Floor Mats
- Gauges -inc: Speedometer, Odometer, Engine Coolant Temp, Tachometer, Oil Level, Trip Odometer and Trip Computer
- Interior Trim -inc: Genuine Wood Instrument Panel Insert, Genuine Wood Door Panel Insert, Genuine Wood Console Insert and Metal-Look Interior Accents
- Leather Seating Surfaces
- Power 1st Row Windows w/Front And Rear 1-Touch Up/Down
- Power Door Locks w/Autolock Feature
- Power Rear Windows and Fixed 3rd Row Windows- Rear HVAC w/Separate Controls
- Remote Keyless Entry w/Integrated Key Transmitter, 4 Door Curb/Courtesy, Illuminated Entry, Illuminated Ignition Switch and Panic Button
- Trip Computer- 2 Seatback Storage Pockets- 3 12V DC Power Outlets
- 40-20-40 Folding Split-Bench Front Facing Manual Reclining Fold Forward Seatback Rear Seat w/Manual Fore/Aft
- Air Filtration- Analog Display- Cargo Area Concealed Storage- Cargo Space Lights
- Carpet Floor Trim- Compass- Cruise Control- Day-Night Auto-Dimming Rearview Mirror
- Delayed Accessory Power
- Driver And Passenger Visor Vanity Mirrors w/Driver And Passenger Illumination, Driver And Passenger Auxiliary Mirror
- Driver Foot Rest- Driver Seat- Engine Immobilizer
- FOB Controls -inc: Trunk/Hatch/Tailgate- Fade-To-Off Interior Lighting
- Front And Rear Map Lights- Front Center Armrest and Rear Center Armrest
- Front Cupholder- Full Cloth Headliner
- Full Floor Console w/Covered Storage, Mini Overhead Console and 3 12V DC Power Outlets
- HVAC -inc: Underseat Ducts and Console Ducts - HomeLink Garage Door Transmitter

- Illuminated Locking Glove Box- Leather Steering Wheel
- Leather/Metal-Look Gear Shift Knob- Leatherette Door Trim Insert
- Manual Adjustable Rear Head Restraints- Manual Tilt/Telescoping Steering Column
- Outside Temp Gauge- Passenger Seat- Perimeter Alarm
- Power Fuel Flap Locking Type- Rear Cupholder- Redundant Digital Speedometer
- Refrigerated/Cooled Box Located In The Glovebox, Driver / Passenger And Rear Door Bins
- Systems Monitor- Trunk/Hatch Auto-Latch- Valet Function

Exterior

- Panoramic Sunroof w/Tilt/Slide & Power Sunshade- Power Liftgate Rear Cargo Access
- Roof Rack- Tailgate/Rear Door Lock Included w/Power Door Locks
- Wheels: 8" x 18" 5-Double-Spoke Dynamic Design
- Black Front Windshield Trim and Black Rear Window Trim - Body-Colored Door Handles
- Body-Colored Front Bumper w/Metal-Look Rub Strip/Fascia Accent and Metal-Look Bumper Insert
- Body-Colored Rear Bumper w/Metal-Look Rub Strip/Fascia Accent- Clearcoat Paint
- Compact Spare Tire Mounted Inside Under Cargo- Deep Tinted Glass
- Fixed Rear Window w/Fixed Interval Wiper and Defroster- Front License Plate Bracket
- Galvanized Steel/Aluminum Panels- LED Brakelights- Lip Spoiler
- Metal-Look Bodyside Insert, Black Bodyside Cladding and Black Wheel Well Trim
- Metal-Look Grille- Perimeter/Approach Lights
- Programmable Daytime Running Auto-Leveling Headlamps w/Delay-Off
- Rear Fog Lamps
- Speed Sensitive Rain Detecting Variable Intermittent Wipers w/Heated Jets
- Steel Spare Wheel- Tires: 235/60R18 103H AS- Wheels w/Silver Accents

Safety

- 3-Step Heated Front Seats
- 8-Way Power Front Bucket Seats -inc: 4-way driver power lumbar adjustment and driver and front-passenger comfort head rests
- Dual Zone Front Automatic Air Conditioning
- Full Carpet Floor Covering -inc: Carpet Front And Rear Floor Mats
- Gauges -inc: Speedometer, Odometer, Engine Coolant Temp, Tachometer, Oil Level, Trip Odometer and Trip Computer
- Interior Trim -inc: Genuine Wood Instrument Panel Insert, Genuine Wood Door Panel Insert, Genuine Wood Console Insert and Metal-Look Interior Accents
- Leather Seating Surfaces
- Power 1st Row Windows w/Front And Rear 1-Touch Up/Down
- Power Door Locks w/Autolock Feature
- Power Rear Windows and Fixed 3rd Row Windows- Rear HVAC w/Separate Controls
- Remote Keyless Entry w/Integrated Key Transmitter, 4 Door Curb/Courtesy, Illuminated Entry, Illuminated Ignition Switch and Panic Button
- Trip Computer- 2 Seatback Storage Pockets- 3 12V DC Power Outlets
- 40-20-40 Folding Split-Bench Front Facing Manual Reclining Fold Forward Seatback Rear Seat w/Manual Fore/Aft
- Air Filtration- Analog Display- Cargo Area Concealed Storage- Cargo Space Lights
- Carpet Floor Trim- Compass- Cruise Control- Day-Night Auto-Dimming Rearview Mirror
- Delayed Accessory Power
- Driver And Passenger Visor Vanity Mirrors w/Driver And Passenger Illumination, Driver And Passenger Auxiliary Mirror
- Driver Foot Rest- Driver Seat- Engine Immobilizer
- FOB Controls -inc: Trunk/Hatch/Tailgate- Fade-To-Off Interior Lighting
- Front And Rear Map Lights- Front Center Armrest and Rear Center Armrest
- Front Cupholder- Full Cloth Headliner
- Full Floor Console w/Covered Storage, Mini Overhead Console and 3 12V DC Power Outlets
- HVAC -inc: Underseat Ducts and Console Ducts - HomeLink Garage Door Transmitter
- Illuminated Locking Glove Box- Leather Steering Wheel
- Leather/Metal-Look Gear Shift Knob- Leatherette Door Trim Insert
- Manual Adjustable Rear Head Restraints- Manual Tilt/Telescoping Steering Column
- Outside Temp Gauge- Passenger Seat- Perimeter Alarm
- Power Fuel Flap Locking Type- Rear Cupholder- Redundant Digital Speedometer
- Refrigerated/Cooled Box Located In The Glovebox, Driver / Passenger And Rear Door Bins
- Systems Monitor- Trunk/Hatch Auto-Latch- Valet Function

Mechanical

- Transmission: 7-Speed S tronic Dual-Clutch Auto -inc: sport program and manual shift mode (shift-by-wire)
- 18.5 Gal. Fuel Tank
- 4-Wheel Disc Brakes w/4-Wheel ABS, Front And Rear Vented Discs, Brake Assist, Hill Descent Control and Electric Parking Brake

Descent Control and Electric Parking Brake

- 5.302 Axle Ratio
- 75-Amp/Hr 420CCA Maintenance-Free Battery w/Run Down Protection
- Automatic Full-Time All-Wheel Drive- Brake Actuated Limited Slip Differential
- Electric Power-Assist Speed-Sensing Steering- Engine Auto Stop-Start Feature
- Engine Oil Cooler
- Engine: 2.0L TFSI Direct-Injection DOHC 4 Cylinder -inc: Audi valvelift system
- Front And Rear Anti-Roll Bars- GVWR: TBD- Gas-Pressurized Shock Absorbers
- Multi-Link Front Suspension w/Coil Springs- Multi-Link Rear Suspension w/Coil Springs
- Permanent Locking Hubs- Quasi-Dual Stainless Steel Exhaust
- Regenerative 150 Amp Alternator- Transmission w/Oil Cooler

GP Motor Company

GP Motor Company

View this car on our website at gpmotorz.com/6693648

Website: gpmotorz.com

Phone:

Map: [420 N Kays Dr , Kaysville, UT 84037](#)

