

2013 BMW 328i Sedan HUD,NAV,HTD LTH,BLK WHLS,37K,WE FINANCE

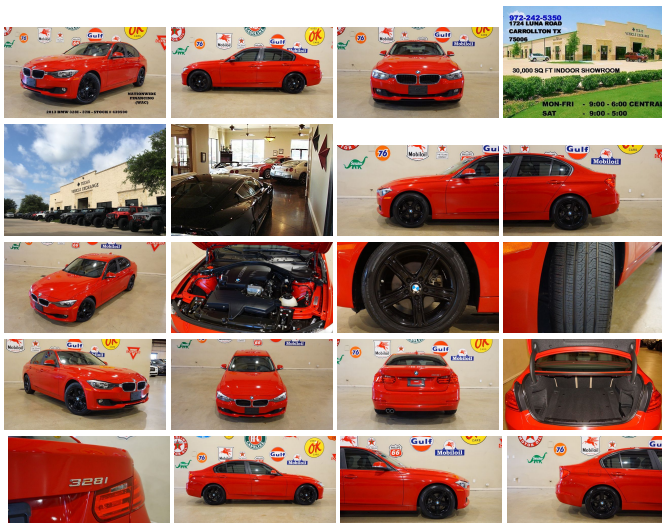
View this car on our website at 6e2ad586-b84f-49fc-ac4f-2b3a61d89edd.autorevo-websites.com/6690992/ebrochure



Our Price **\$15,900**

Specifications:

Year:	2013
VIN:	WBA3C1C52DF439590
Make:	BMW
Stock:	439590
Model/Trim:	328i Sedan HUD,NAV,HTD LTH,BLK WHLS,37K,WE FINANCE
Condition:	Pre-Owned
Body:	Sedan
Exterior:	Melbourne Red Metallic
Engine:	2.0-liter BMW TwinPower Turbo inline 4- cylinder, 16-valve 240-hp engine combines a twin-scroll turbocharger with variable valve control (Double-VANOS and Valvetronic) and high-precision direct injection.
Interior:	Venetian Beige Leather
Mileage:	37,185
Drivetrain:	Rear Wheel Drive
Economy:	City 22 / Highway 33



NATION WIDE FINANCING SUBMIT CREDIT APP
WWW.TVEAUTO.COM OR CALL 972-242-5350 2013 BMW 328I
SEDAN, 2.0L I4 TWIN POWER TURBO ENGINE, AUTOMATIC
TRANSMISSION, ONLY 37K, MELBOURNE RED METALLIC W/TAN
LEATHER INTERIOR, CARFAX REPORTS 2 OWNERS NO
ACCIDENTS, APPEARS TO BE A NON-SMOKER, PUSH BUTTON
START, FOGLIGHTS, HEAD-UP DISPLAY, NAVIGATION, POWER
WINDOWS, POWER DOOR LOCKS, POWER FOLDING HEATED
MIRRORS WITH TURN SIGNALS, TILT/TELESCOPE STEERING
WHEEL WITH AUDIO & CRUISE CONTROLS, DUAL POWER &
HEATED FRONT SEATS WITH DRIVER 2 MEMORY POSITION, DTC
CONTROL, ECO PRO/COMFORT/SPORT MODES, ICE COLD A/C,
DUAL CLIMATE CONTROL, HD AM/FM STEREO WITH CD PLAYER,
BLUETOOTH, SELF DIMMING REAR VIEW MIRROR WITH
COMPASS DISPLAY, HOMELINK GARAGE CONTROLS, DUAL
LIGHTED VANITY MIRRORS, REAR A/C VENTS, NO FLOOR MATS,
NO OWNER'S MANUAL, 1 KEY/1 REMOTE. 17 IN BLACK ALLOY
WHEELS, FRONT TIRES ARE BRAND NEW PIRELLI 225/50R/17,
REAR TIRES ARE PIRELLI 225/50R/17 WITH APPROX 90% TREAD
LIFE REMAINING. RUNS AND DRIVES GREAT. GIVE US A CALL @
972-242-5350 OR STOP BY FOR A TEST DRIVE. 1724 LUNA RD IN
CARROLLTON - 2 MILES NORTH OF 635. CLICK ON CARFAX ICON
TO VIEW A FULL REPORT AT NO COST TO YOU.

2013 BMW 328i Sedan HUD,NAV,HTD LTH,BLK WHLS,37K,WE FINANCE

PSv5 DEMO - Southside Used - 844-290-3907 - View this car on our website at 6e2ad586-b84f-49fc-ac4f-2b3a61d89edd.autorevo-websites.com/6690992/ebrochure

Our Location :



2013 BMW 328i Sedan HUD,NAV,HTD LTH,BLK WHLS,37K,WE FINANCE

PSv5 DEMO - Southside Used - 844-290-3907 - View this car on our website at 6e2ad586-b84f-49fc-ac4f-2b3a61d89edd.autorevo-websites.com/6690992/ebrochure

Installed Options

Interior

- 8-way power front seats includes 2-way manual headrests, and driver memory with 2 presets for exterior mirror and seat positions
- Pwr front seats -inc: driver seat memory- Leatherette upholstery
- 3-spoke leather-wrapped multi-function steering wheel with controls for audio system, cruise control, and Bluetooth wireless communication for hands-free mobile phone
- Central locking system with center console switch (leaves gas filler door unlocked), double-lock feature and 2-step unlocking
- Remote keyless entry with remote trunk release- Coded driveway protection
- Dynamic cruise control- Electric interior trunk release
- Satin silver matte trim (N/A w/ZLL Luxury Line, ZML Modern Line, ZSL Sport Line or ZMM M Sport Line)
- 2-way headrests with active head restraints- Split fold-down through-load rear seats
- Front-seat center armrest- Rear-seat center armrest with cupholders- Floor mats
- Tilt/telescopic steering wheel column
- On-board computer with check control provides feedback on the vehicle's operating status, including oil level indicator and distance to next service appointment/oil change, as well as other detailed information such as micro-filter status. It also provides travel information, travel range on remaining fuel, external temperature and more
- TeleService activation- Power front and rear windows with "one-touch" up/down operation
- Integrated 3-button universal garage-door opener
- Advanced vehicle key memory includes climate-control temperature and air-distribution settings, exterior mirror and power seat settings, audio tone settings and radio presets, central-locking preferences, and lighting preferences
- iDrive system with 6.5-inch full color flat-screen display, controller and 8 programmable

memory buttons

- Automatic climate control includes micro-filter, automatic air recirculation, left/right temperature control, temperature- and volume-controlled rear outlets, windshield misting sensor, max A/C function, heat at rest, and recall of individual user settings
- Rear window defroster- Locking glovebox- 4 12-volt power sockets- Storage package
- Automatic-dimming rearview mirror- BMW ambient lighting front & rear
- Courtesy lights include fade in/fade out, actuation from remote, automatic switch-on when engine is turned off, separately controlled left/right front and rear reading lights, front footwell lighting, and illuminated vanity mirrors
- Knee airbags for driver and front passenger

Exterior

- Star spoke (style 393) 17 x 7.5 light alloy wheels -inc: 225/50R17 run-flat all-season tires
- Halogen free-form front foglights- Heated dual power mirrors
- Power-adjustable folding exterior mirrors with automatic dimming function -inc: integrated turn signals
- Halogen high- and low-beam headlights- Adaptive brakelights
- Rain-sensing windshield wipers and automatic headlight control
- Ground-illuminating lights in door handles

Safety

- 8-way power front seats includes 2-way manual headrests, and driver memory with 2 presets for exterior mirror and seat positions
- Pwr front seats -inc: driver seat memory- Leatherette upholstery
- 3-spoke leather-wrapped multi-function steering wheel with controls for audio system, cruise control, and Bluetooth wireless communication for hands-free mobile phone
- Central locking system with center console switch (leaves gas filler door unlocked), double-lock feature and 2-step unlocking
- Remote keyless entry with remote trunk release- Coded driveway protection
- Dynamic cruise control- Electric interior trunk release
- Satin silver matte trim (N/A w/ZLL Luxury Line, ZML Modern Line, ZSL Sport Line or ZMM M Sport Line)
- 2-way headrests with active head restraints- Split fold-down through-load rear seats
- Front-seat center armrest- Rear-seat center armrest with cupholders- Floormats
- Tilt/telescopic steering wheel column
- On-board computer with check control provides feedback on the vehicle's operating status, including oil level indicator and distance to next service appointment/oil change, as well as other detailed information such as micro-filter status. It also provides travel information, travel range on remaining fuel, external temperature and more
- TeleService activation- Power front and rear windows with "one-touch" up/down operation
- Integrated 3-button universal garage-door opener
- Advanced vehicle key memory includes climate-control temperature and air-distribution settings, exterior mirror and power seat settings, audio tone settings and radio presets, central-locking preferences, and lighting preferences
- iDrive system with 6.5-inch full color flat-screen display, controller and 8 programmable memory buttons
- Automatic climate control includes micro-filter, automatic air recirculation, left/right temperature control, temperature- and volume-controlled rear outlets, windshield misting sensor, max A/C function, heat at rest, and recall of individual user settings
- Rear window defroster- Locking glovebox- 4 12-volt power sockets- Storage package
- Automatic-dimming rearview mirror- BMW ambient lighting front & rear
- Courtesy lights include fade in/fade out, actuation from remote, automatic switch-on when engine is turned off, separately controlled left/right front and rear reading lights, front footwell lighting, and illuminated vanity mirrors
- Knee airbags for driver and front passenger

Mechanical

- 8-speed STEPTRONIC automatic transmission with adaptive transmission control (ATC)
- 2.0-liter BMW TwinPower Turbo inline 4-cylinder, 16-valve 240-hp engine combines a twin-scroll turbocharger with variable valve control (Double-VANOS and Valvetronic) and high-precision direct injection.
- Blow-by heater- Engine start/stop button- Auto start-stop function
- Driving dynamics control with eco pro, comfort and sport settings
- Direct ignition system with knock control- Electronic throttle control
- Electronically controlled engine cooling (map cooling)- Rear wheel drive- Battery switch
- Double-pivot type front suspension with spring struts and anti-roll bar
- 5-link rear suspension with cast-aluminum upper transverse arms
- Extra-lightweight chassis components, tailored axle kinematics and high-precision steering system
- Twin-tube gas-pressure shock absorbers- Servotronic power assist steering
- Brake energy regeneration system
- High performance, lightweight, 4-wheel ventilated disc brakes with anti-lock braking system (ABS), dynamic brake control (DBC) and cornering brake control (CBC)

All vehicles are sold as-is, where is. No warranty expressed or implied. It is the customer's sole responsibility to verify the existence and condition of any equipment listed. Neither the dealership nor AutoRevo is responsible for misprints on prices or equipment. It is the customer's sole responsibility to verify the accuracy of the prices with the dealer. Pricing subject to change without notice.

PSv5 DEMO - Southside Used

6e2ad586-b84f-49fc-ac4f-2b3a61d89edd.autorevo-websites.com

844-290-3907

807 SE Military Drive

San Antonio, TX 78214

© 2024 AutoRevo - All rights reserved. - Powered by AutoRevo