

# 2018 Jeep All-New Wrangler Unlimited Rubicon

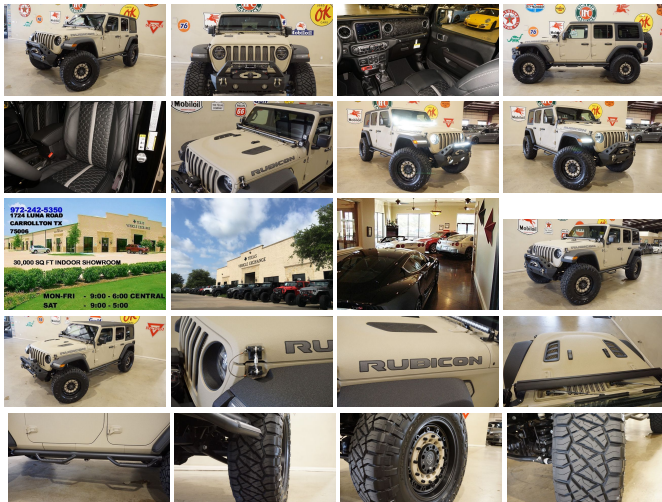
View this car on our website at [6e2ad586-b84f-49fc-ac4f-2b3a61d89edd.autorevo-websites.com/6690957/ebrochure](http://6e2ad586-b84f-49fc-ac4f-2b3a61d89edd.autorevo-websites.com/6690957/ebrochure)



Our Price **\$70,900**

## Specifications:

<b>Year:</b>	2018
<b>VIN:</b>	1C4HJXFG0JW226678
<b>Make:</b>	Jeep
<b>Stock:</b>	226678
<b>Model/Trim:</b>	All-New Wrangler Unlimited Rubicon
<b>Condition:</b>	Pre-Owned
<b>Body:</b>	SUV
<b>Exterior:</b>	Tan
<b>Engine:</b>	ENGINE: 3.6L V6 24V VVT UPG I W/ESS
<b>Interior:</b>	Black Leather
<b>Mileage:</b>	2,412
<b>Drivetrain:</b>	4 Wheel Drive
<b>Economy:</b>	City 17 / Highway 23



NATION WIDE FINANCING SUBMIT CREDIT APP  
WWW.TVEAUTO.COM OR CALL 972-242-5350 "GOBI TAN EDITION"  
CUSTOM BUILT KEVLAR 2018 JEEP WRANGLER JL UNLIMITED  
RUBICON 4X4 WITH 24R PACKAGE UPGRADES INCLUDE: \* GOBI  
TAN KEVLAR COATING \* CUSTOM ALEA BLACK LEATHER WITH  
SILVER STITCHING \* FACTORY REMOTE START \* COLD  
WEATHER GROUP \* LED LIGHTING GROUP \* FACTORY 8.4 INCH  
TOUCH SCREEN NAVIGATION WITH HD AM/FM/SIRIUS STEREO &  
ALPINE PREMIUM AUDIO SYSTEM \* FACTORY BACK-UP CAMERA  
\* U-CONNECT \* (4.10 AXLE RATIO) \* DV8 OFF ROAD FS-25  
STUBBY FRONT BUMPER WITH FRONT SKID PLATE & LED LIGHT  
BAR & LED FOGLIGHTS \* FRONT D-RINGS & ISOLATORS (TAN) \*  
SMITTYBILT NEW GEN II "X20" 10,000 LB WATERPROOF AND  
WIRELESS CONTROL WINCH WITH SYNTHETIC ROPE \* FACTORY  
55 PROLINK (BLACK) \* ROUGH COUNTRY SPARE TIRE ADAPTOR  
\* FACTORY MESH GRILLE PAINTED TAN \* FACTORY LED  
HEADLIGHTS \* MOPAR 10TH ANNIVERSARY RUBICON POWER  
DOME HOOD \* DRAKE OFF ROAD HOOD LATCHES \* MOPAR 2"  
LIFT KIT WITH FOX SERIES SHOCKS \* MOPAR AUXILIARY SWITCH  
BANK KIT \* 50" LED LIGHT BAR AND 4 RIGID INDUSTRIES DUALY  
D2 LED PILLAR LIGHTS \* N-FAB BLACK TUBULAR STEPS \*  
MAGNAFLOW BLACK SERIES EXHAUST SYSTEM \* MOPAR ALL  
WEATHER FLOOR MATS \* SUPERCHIPS FLASHCAL  
PROGRAMMER \* 20" BLACK RHINO "ARSENAL" WHEELS \* NITTO  
RIDGE GRAPPLER 37X13.50R/20 TIRES WE BUILD EVERY JEEP  
WITH PRIDE! DO NOT HESITATE TO CALL US WITH THIS JEEP  
BUILD. WE CAN MAKE CHANGES TO THIS JEEP BUILD OR  
CUSTOM BUILD ANY JEEP TO YOUR PREFERENCE. GIVE US A  
CALL @ 972-242-5350 OR STOP BY FOR A TEST DRIVE. 1724 LUNA  
RD IN CARROLLTON - 2 MILES NORTH OF 635.

2018 Jeep All-New Wrangler Unlimited Rubicon  
PSv5 DEMO - Southside Used - 844-290-3907 - View this car on our website at [6e2ad586-b84f-49fc-ac4f-2b3a61d89edd.autorevo-websites.com/6690957/ebrochure](https://www.6e2ad586-b84f-49fc-ac4f-2b3a61d89edd.autorevo-websites.com/6690957/ebrochure)

### Our Location :



2018 Jeep All-New Wrangler Unlimited Rubicon  
PSv5 DEMO - Southside Used - 844-290-3907 - View this car on our website at [6e2ad586-b84f-49fc-ac4f-2b3a61d89edd.autorevo-websites.com/6690957/ebrochure](https://www.6e2ad586-b84f-49fc-ac4f-2b3a61d89edd.autorevo-websites.com/6690957/ebrochure)

### Installed Options

#### Interior

- Front Seats w/Cloth Back Material and Manual Driver Lumbar
- 6-Way Driver Seat -inc: Manual Recline, Height Adjustment, Fore/Aft Movement and Manual Lumbar Support
- Gauges -inc: Speedometer, Odometer, Voltmeter, Oil Pressure, Engine Coolant Temp, Tachometer, Engine Hour Meter, Trip Odometer and Trip Computer
- Power Rear Windows and Removable 3rd Row Windows
- Proximity Key For Push Button Start Only
- Remote Keyless Entry w/Integrated Key Transmitter, Illuminated Entry and Panic Button
- Premium Cloth Low-Back Bucket Seats
- Full Carpet Floor Covering -inc: Carpet Front And Rear Floor Mats
- Smart Device Integration
- Power 1st Row Windows w/Driver And Passenger 1-Touch Down
- Power Door Locks w/Autolock Feature- Trip Computer
- 4-Way Passenger Seat -inc: Manual Recline and Fore/Aft Movement
- 60-40 Folding Split-Bench Front Facing Fold Forward Seatback Premium Cloth Rear Seat
- Manual Tilt/Telescoping Steering Column- Leather Steering Wheel
- Illuminated Front Cupholder- Illuminated Rear Cupholder- 2 12V DC Power Outlets
- Compass- Garage Door Transmitter- Cruise Control w/Steering Wheel Controls
- Voice Activated Dual Zone Front Automatic Air Conditioning- HVAC -inc: Console Ducts
- Locking Glove Box
- Interior Trim -inc: Colored Instrument Panel Insert, Metal-Look Door Panel Insert, Metal-Look Console Insert and Metal-Look Interior Accents
- Urethane Gear Shift Knob- Day-Night Rearview Mirror
- Driver And Passenger Visor Vanity Mirrors w/Driver And Passenger Illumination

### Option Packages

#### Factory Installed Packages

ENGINE: 3.6L V6 24V VVT UPG I W/ESS

- Full Floor Console w/Locking Storage, 2 12V DC Power Outlets and 1 AC Power Outlet
- Front And Rear Map Lights- Fade-To-Off Interior Lighting
- Carpet Floor Trim, Carpet And Rubber Mat- Locking Cargo Area Concealed Storage
- Cargo Space Lights
- Instrument Panel Bin, Dashboard Storage, Driver / Passenger And Rear Door Bins
- Delayed Accessory Power- Systems Monitor- Redundant Digital Speedometer
- Outside Temp Gauge- Analog Display
- Manual Adjustable Front Head Restraints and Foldable Rear Head Restraints
- Front Center Armrest w/Storage- 2 Seatback Storage Pockets- Perimeter Alarm
- Sentry Key Engine Immobilizer- 2 12V DC Power Outlets and 1 AC Power Outlet
- Air Filtration

---

## Exterior

- Wheels: 17" x 7.5" Polished w/Black Pockets - Tires: LT285/70R17C BSW Off-Road
- Black Front Bumper w/2 Tow Hooks- Black Rear Bumper w/1 Tow Hook
- Manual Convertible Top w/Fixed Roll-Over Protection
- Tailgate/Rear Door Lock Included w/Power Door Locks
- Fully Automatic Aero-Composite Halogen Daytime Running Headlamps w/Delay-Off
- Front Fog Lamps- Aluminum Spare Wheel- Full-Size Spare Tire Mounted Outside Rear
- Clearcoat Paint w/Badging- Black Wheel Well Trim and Black Fender Flares
- Black Side Windows Trim- Black Door Handles
- Black Power Heated Side Mirrors w/Manual Folding- Removable Rear Window
- Deep Tinted Glass- Variable Intermittent Wipers
- Galvanized Steel/Aluminum/Magnesium Panels- Body-Color Grille w/Colored Accents
- Conventional Rear Cargo Access- Non-Lock Fuel Cap w/o Discriminator

---

## Safety

- Front Seats w/Cloth Back Material and Manual Driver Lumbar
- 6-Way Driver Seat -inc: Manual Recline, Height Adjustment, Fore/Aft Movement and Manual Lumbar Support
- Gauges -inc: Speedometer, Odometer, Voltmeter, Oil Pressure, Engine Coolant Temp, Tachometer, Engine Hour Meter, Trip Odometer and Trip Computer
- Power Rear Windows and Removable 3rd Row Windows
- Proximity Key For Push Button Start Only
- Remote Keyless Entry w/Integrated Key Transmitter, Illuminated Entry and Panic Button
- Premium Cloth Low-Back Bucket Seats
- Full Carpet Floor Covering -inc: Carpet Front And Rear Floor Mats
- Smart Device Integration
- Power 1st Row Windows w/Driver And Passenger 1-Touch Down
- Power Door Locks w/Autolock Feature- Trip Computer
- 4-Way Passenger Seat -inc: Manual Recline and Fore/Aft Movement
- 60-40 Folding Split-Bench Front Facing Fold Forward Seatback Premium Cloth Rear Seat
- Manual Tilt/Telescoping Steering Column- Leather Steering Wheel
- Illuminated Front Cupholder- Illuminated Rear Cupholder- 2 12V DC Power Outlets
- Compass- Garage Door Transmitter- Cruise Control w/Steering Wheel Controls
- Voice Activated Dual Zone Front Automatic Air Conditioning- HVAC -inc: Console Ducts
- Locking Glove Box
- Interior Trim -inc: Colored Instrument Panel Insert, Metal-Look Door Panel Insert, Metal-Look Console Insert and Metal-Look Interior Accents
- Urethane Gear Shift Knob- Day-Night Rearview Mirror
- Driver And Passenger Visor Vanity Mirrors w/Driver And Passenger Illumination
- Full Floor Console w/Locking Storage, 2 12V DC Power Outlets and 1 AC Power Outlet
- Front And Rear Map Lights- Fade-To-Off Interior Lighting
- Carpet Floor Trim, Carpet And Rubber Mat- Locking Cargo Area Concealed Storage
- Cargo Space Lights
- Instrument Panel Bin, Dashboard Storage, Driver / Passenger And Rear Door Bins
- Delayed Accessory Power- Systems Monitor- Redundant Digital Speedometer
- Outside Temp Gauge- Analog Display
- Manual Adjustable Front Head Restraints and Foldable Rear Head Restraints
- Front Center Armrest w/Storage- 2 Seatback Storage Pockets- Perimeter Alarm
- Sentry Key Engine Immobilizer- 2 12V DC Power Outlets and 1 AC Power Outlet
- Air Filtration

---

## Mechanical

- Transmission: 6-Speed Manual- Driver Selectable Front Locking Differential
- Driver Selectable Rear Locking Differential- Brake Actuated Limited Slip Differential
- Engine: 3.6L V6 24V VVT UPG I w/ESS- 4.10 Rear Axle Ratio- Performance Suspension
- GVWR: 5,800 lbs- 50 State Emissions- Engine Auto Stop-Start Feature
- Manual Transfer Case- Part-Time Four-Wheel Drive- Engine Oil Cooler
- 650CCA Maintenance-Free Battery w/Run Down Protection- 220 Amp Alternator

- Towing Equipment -inc: Trailer Sway Control- 5 Skid Plates- 892lbs. Maximum Payload
- HD Shock Absorbers- Front Active w/Driver Control Anti-Roll Bar and Rear Anti-Roll Bar
- Electro-Hydraulic Power Assist Steering- 21.5 Gal. Fuel Tank
- Single Stainless Steel Exhaust- Auto Locking Hubs
- Leading Link Front Suspension w/Coil Springs
- Trailing Arm Rear Suspension w/Coil Springs
- 4-Wheel Disc Brakes w/4-Wheel ABS, Front Vented Discs, Brake Assist and Hill Hold Control

All vehicles are sold as-is, where is. No warranty expressed or implied. It is the customer's sole responsibility to verify the existence and condition of any equipment listed. Neither the dealership nor AutoRevo is responsible for misprints on prices or equipment. It is the customer's sole responsibility to verify the accuracy of the prices with the dealer. Pricing subject to change without notice.

---

PSv5 DEMO - Southside Used

[6e2ad586-b84f-49fc-ac4f-2b3a61d89edd.autorevo-websites.com](https://6e2ad586-b84f-49fc-ac4f-2b3a61d89edd.autorevo-websites.com)

844-290-3907

807 SE Military Drive

San Antonio, TX 78214

© 2024 AutoRevo - All rights reserved. - Powered by AutoRevo