

6e2ad586-b84f-49fc-ac4f-2b3a61d89edd.autorevo-websites.com  
844-290-3907  
807 SE Military Drive  
San Antonio, TX 78214

PSv5 DEMO - Southside  
Used

## 2019 Jeep Wrangler Unlimited Rubicon

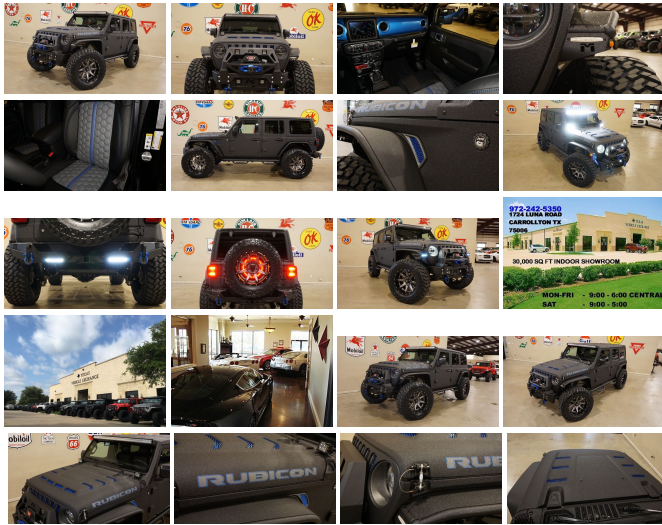
View this car on our website at [6e2ad586-b84f-49fc-ac4f-2b3a61d89edd.autorevo-websites.com/6690951/ebrochure](https://6e2ad586-b84f-49fc-ac4f-2b3a61d89edd.autorevo-websites.com/6690951/ebrochure)



Our Price **\$84,900**

**Specifications:**

**Year:** 2019  
**VIN:** 1C4HJXFG8KW595029  
**Make:** Jeep  
**Stock:** 595029  
**Model/Trim:** Wrangler Unlimited Rubicon  
**Condition:** Pre-Owned  
**Body:** SUV  
**Exterior:** Black  
**Engine:** ENGINE: 3.6L V6 24V VVT UPG I W/ESS  
**Interior:** Black Leather  
**Mileage:** 39  
**Drivetrain:** 4 Wheel Drive  
**Economy:** City 17 / Highway 23



NATION WIDE FINANCING SUBMIT CREDIT APP  
 WWW.TVEAUTO.COM OR CALL 972-242-5350 "RAPTOR BLACK EDITION" CUSTOM BUILT KEVLAR 2019 JEEP WRANGLER JL UNLIMITED RUBICON 4X4 WITH 24R PACKAGE UPGRADES INCLUDE: \* RAPTOR BLACK KEVLAR COATING WITH BLUE ACCENTS \* CUSTOM ALEA BLACK & GRAY LEATHER WITH BLUE STITCHING \* FACTORY REMOTE START \* REMOTE PROXIMITY KEYLESS ENTRY \* COLD WEATHER GROUP \* LED LIGHTING GROUP \* FACTORY 8.4 INCH TOUCH SCREEN NAVIGATION WITH HD AM/FM/SIRIUS STEREO & ALPINE PREMIUM AUDIO SYSTEM \* FACTORY BACK-UP CAMERA \* U-CONNECT \* (4.10 AXLE RATIO) \* FAB FOURS "FULL METAL JACKET" STUBBY WINCH BUMPER WITH MODIFIER \* 4 LED D2 LIGHTS IN FRONT BUMPER \* FRONT D-RINGS & ISOLATORS (BLUE) \* WARN ZEON 8-S WINCH WITH SYNTHETIC ROPE \* FACTORY 55 PROLINK (BLACK) \* FACTORY MESH GRILLE PAINTED BLUE \* FACTORY LED HEADLIGHTS \* NEW RK SPORT RAM AIR VENTED HOOD \* DRAKE OFF ROAD HOOD LATCHES \* METALCLOAK'S JL OVERLAND FENDERS \* DV8 OFF ROAD FRONT & REAR INNER FENDERS \* RUBICON EXPRESS 2.5" LIFT KIT WITH TERAFLEX FALCON SERIES 3 SHOCKS & RESERVOIRS \* TERAFLEX FALCON STABILIZER KIT \* SUSPENSION PARTS (PAINTED BLUE) \* MOPAR AUXILIARY SWITCH BANK KIT \* 50" LED LIGHT BAR AND 2 RIGID INDUSTRIES D-SS DUALY SIDE SHOOTER LED PILLAR LIGHTS \* SMITTYBILT BLACK TUBULAR STEPS \* SMITTYBILT SPARE TIRE ADAPTOR \* RUGGED RIDGE LED THIRD BRAKE LIGHT RING \* SMITTYBILT XRC GEN 2 REAR BUMPER WITH LED LIGHTS \* REAR D-RINGS & ISOLATORS (BLUE) \* MAGNAFLOW BLACK SERIES EXHAUST SYSTEM \* ALL WEATHER FLOOR MATS \* SUPERCHIPS FLASHCAL PROGRAMMER \* 20" FUEL "RAMPAGE" 2-PIECE WHEELS \* BRAND NEW NITTO TRAIL GRAPPLER 37X13.50R/20 TIRES WE BUILD EVERY JEEP WITH PRIDE! DO NOT HESITATE TO CALL US WITH THIS JEEP BUILD. WE CAN MAKE CHANGES TO THIS JEEP BUILD OR CUSTOM BUILD ANY JEEP TO YOUR PREFERENCE. GIVE US A CALL @ 972-242-5350 OR STOP BY FOR A TEST DRIVE. 1724 LUNA RD IN CARROLLTON - 2 MILES NORTH OF 635.

## Our Location :



2019 Jeep Wrangler Unlimited Rubicon

PSv5 DEMO - Southside Used - 844-290-3907 - View this car on our website at [6e2ad586-b84f-49fc-ac4f-2b3a61d89edd.autorevo-websites.com/6690951/ebrochure](https://www.6e2ad586-b84f-49fc-ac4f-2b3a61d89edd.autorevo-websites.com/6690951/ebrochure)

## Installed Options

### Interior

- Front Seats w/Cloth Back Material and Manual Driver Lumbar
- 6-Way Driver Seat -inc: Manual Recline, Height Adjustment, Fore/Aft Movement and Manual Lumbar Support
- Gauges -inc: Speedometer, Odometer, Voltmeter, Oil Pressure, Engine Coolant Temp, Tachometer, Engine Hour Meter, Trip Odometer and Trip Computer
- Power Rear Windows and Removable 3rd Row Windows
- Proximity Key For Push Button Start Only
- Remote Keyless Entry w/Integrated Key Transmitter, Illuminated Entry and Panic Button
- Premium Cloth Low-Back Bucket Seats
- Full Carpet Floor Covering -inc: Carpet Front And Rear Floor Mats
- Power 1st Row Windows w/Driver And Passenger 1-Touch Down
- Power Door Locks w/Autolock Feature- Trip Computer
- 4-Way Passenger Seat -inc: Manual Recline and Fore/Aft Movement
- 60-40 Folding Split-Bench Front Facing Fold Forward Seatback Premium Cloth Rear Seat
- Manual Tilt/Telescoping Steering Column- Leather Steering Wheel
- Illuminated Front Cupholder- Illuminated Rear Cupholder- 2 12V DC Power Outlets
- Compass- Garage Door Transmitter- Cruise Control w/Steering Wheel Controls
- Voice Activated Dual Zone Front Automatic Air Conditioning- HVAC -inc: Console Ducts
- Locking Glove Box
- Interior Trim -inc: Colored Instrument Panel Insert, Metal-Look Door Panel Insert, Metal-Look Console Insert and Metal-Look Interior Accents
- Urethane Gear Shift Knob- Day-Night Rearview Mirror
- Driver And Passenger Visor Vanity Mirrors w/Driver And Passenger Illumination
- Full Floor Console w/Locking Storage, 2 12V DC Power Outlets and 1 AC Power Outlet
- Front And Rear Map Lights- Fade-To-Off Interior Lighting
- Carpet Floor Trim, Carpet And Rubber Mat- Locking Cargo Area Concealed Storage
- Cargo Space Lights- Smart Device Integration
- Instrument Panel Bin, Dashboard Storage, Driver / Passenger And Rear Door Bins

## Option Packages

### Factory Installed Packages

ENGINE: 3.6L V6 24V VVT UPG I W/ESS

- Delayed Accessory Power- Systems Monitor- Redundant Digital Speedometer
- Outside Temp Gauge- Analog Display
- Manual Adjustable Front Head Restraints and Foldable Rear Head Restraints
- Front Center Armrest w/Storage- 2 Seatback Storage Pockets- Perimeter Alarm
- Sentry Key Engine Immobilizer- 2 12V DC Power Outlets and 1 AC Power Outlet
- Air Filtration

---

## Exterior

- Wheels: 17" x 7.5" Machined w/Black Pockets - Tires: LT285/70R17C BSW Off-Road
- Black Front Bumper w/2 Tow Hooks- Black Rear Bumper w/1 Tow Hook
- Manual Convertible Top w/Fixed Roll-Over Protection
- Tailgate/Rear Door Lock Included w/Power Door Locks
- Fully Automatic Aero-Composite Halogen Daytime Running Headlamps w/Delay-Off
- Front Fog Lamps- Aluminum Spare Wheel- Full-Size Spare Tire Mounted Outside Rear
- Clearcoat Paint w/Badging- Black Wheel Well Trim and Black Fender Flares
- Black Side Windows Trim- Black Door Handles
- Black Power Heated Side Mirrors w/Manual Folding- Removable Rear Window
- Deep Tinted Glass- Variable Intermittent Wipers
- Galvanized Steel/Aluminum/Magnesium Panels- Body-Color Grille w/Colored Accents
- Conventional Rear Cargo Access- Non-Lock Fuel Cap w/o Discriminator

---

## Safety

- Front Seats w/Cloth Back Material and Manual Driver Lumbar
- 6-Way Driver Seat -inc: Manual Recline, Height Adjustment, Fore/Aft Movement and Manual Lumbar Support
- Gauges -inc: Speedometer, Odometer, Voltmeter, Oil Pressure, Engine Coolant Temp, Tachometer, Engine Hour Meter, Trip Odometer and Trip Computer
- Power Rear Windows and Removable 3rd Row Windows
- Proximity Key For Push Button Start Only
- Remote Keyless Entry w/Integrated Key Transmitter, Illuminated Entry and Panic Button
- Premium Cloth Low-Back Bucket Seats
- Full Carpet Floor Covering -inc: Carpet Front And Rear Floor Mats
- Power 1st Row Windows w/Driver And Passenger 1-Touch Down
- Power Door Locks w/Autolock Feature- Trip Computer
- 4-Way Passenger Seat -inc: Manual Recline and Fore/Aft Movement
- 60-40 Folding Split-Bench Front Facing Fold Forward Seatback Premium Cloth Rear Seat
- Manual Tilt/Telescoping Steering Column- Leather Steering Wheel
- Illuminated Front Cupholder- Illuminated Rear Cupholder- 2 12V DC Power Outlets
- Compass- Garage Door Transmitter- Cruise Control w/Steering Wheel Controls
- Voice Activated Dual Zone Front Automatic Air Conditioning- HVAC -inc: Console Ducts
- Locking Glove Box
- Interior Trim -inc: Colored Instrument Panel Insert, Metal-Look Door Panel Insert, Metal-Look Console Insert and Metal-Look Interior Accents
- Urethane Gear Shift Knob- Day-Night Rearview Mirror
- Driver And Passenger Visor Vanity Mirrors w/Driver And Passenger Illumination
- Full Floor Console w/Locking Storage, 2 12V DC Power Outlets and 1 AC Power Outlet
- Front And Rear Map Lights- Fade-To-Off Interior Lighting
- Carpet Floor Trim, Carpet And Rubber Mat- Locking Cargo Area Concealed Storage
- Cargo Space Lights- Smart Device Integration
- Instrument Panel Bin, Dashboard Storage, Driver / Passenger And Rear Door Bins
- Delayed Accessory Power- Systems Monitor- Redundant Digital Speedometer
- Outside Temp Gauge- Analog Display
- Manual Adjustable Front Head Restraints and Foldable Rear Head Restraints
- Front Center Armrest w/Storage- 2 Seatback Storage Pockets- Perimeter Alarm
- Sentry Key Engine Immobilizer- 2 12V DC Power Outlets and 1 AC Power Outlet
- Air Filtration

---

## Mechanical

- Transmission: 6-Speed Manual- Driver Selectable Front Locking Differential
- Driver Selectable Rear Locking Differential
- 4-Wheel Disc Brakes w/4-Wheel ABS, Front Vented Discs, Brake Assist and Hill Hold Control
- Brake Actuated Limited Slip Differential- Engine: 3.6L V6 24V VVT UPG I w/ESS
- 4.10 Rear Axle Ratio- Performance Suspension- GVWR: 5,800 lbs- 50 State Emissions
- Engine Auto Stop-Start Feature- Manual Transfer Case- Part-Time Four-Wheel Drive
- Engine Oil Cooler- 650CCA Maintenance-Free Battery w/Run Down Protection
- 220 Amp Alternator- Towing Equipment -inc: Trailer Sway Control- 5 Skid Plates
- 892lbs. Maximum Payload- HD Shock Absorbers
- Front Active w/Driver Control Anti-Roll Bar and Rear Anti-Roll Bar
- Electro-Hydraulic Power Assist Steering- 21.5 Gal. Fuel Tank

- Single Stainless Steel Exhaust- Auto Locking Hubs
  - Leading Link Front Suspension w/Coil Springs
  - Trailing Arm Rear Suspension w/Coil Springs
- 

All vehicles are sold as-is, where is. No warranty expressed or implied. It is the customer's sole responsibility to verify the existence and condition of any equipment listed. Neither the dealership nor AutoRevo is responsible for misprints on prices or equipment. It is the customer's sole responsibility to verify the accuracy of the prices with the dealer. Pricing subject to change without notice.

---

PSv5 DEMO - Southside Used

[6e2ad586-b84f-49fc-ac4f-2b3a61d89edd.autorevo-websites.com](https://6e2ad586-b84f-49fc-ac4f-2b3a61d89edd.autorevo-websites.com)

844-290-3907

807 SE Military Drive

San Antonio, TX 78214

© 2024 AutoRevo - All rights reserved. - Powered by AutoRevo