

# 2014 Porsche Cayenne Turbo AWD ROOF,NAV,BACK-UP,HTD/COOL LTH,21'S,73K!

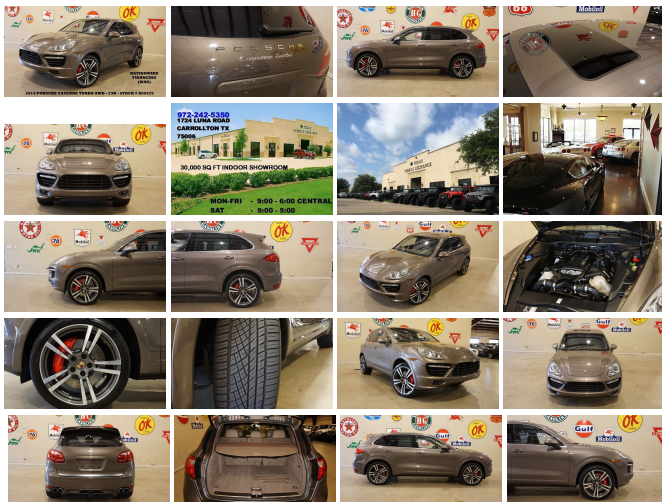
View this car on our website at [6e2ad586-b84f-49fc-ac4f-2b3a61d89edd.autorevo-websites.com/6690943/ebrochure](http://6e2ad586-b84f-49fc-ac4f-2b3a61d89edd.autorevo-websites.com/6690943/ebrochure)



Our Price **\$42,900**

## Specifications:

|                    |   |
|--------------------|---|
| <b>Year:</b>       | 2014  |
| <b>VIN:</b>        | WP1AC2A28ELA80479   |
| <b>Make:</b>       | Porsche   |
| <b>Stock:</b>      | A80479  |
| <b>Model/Trim:</b> | Cayenne Turbo AWD ROOF,NAV,BACK-UP,HTD/COOL LTH,21'S,73K! |
| <b>Condition:</b>  | Pre-Owned   |
| <b>Exterior:</b>   | Umber Metallic  |
| <b>Interior:</b>   | Espresso Leather  |
| <b>Mileage:</b>    | 73,825  |
| <b>Drivetrain:</b> | All Wheel Drive   |



NATION WIDE FINANCING SUBMIT CREDIT APP  
WWW.TVEAUTO.COM OR CALL 972-242-5350 2014 PORSCHE CAYENNE TURBO AWD, 4.8L TWIN TURBO V8 ENGINE, AUTOMATIC TRANSMISSION, ONLY 73K, UMBER METALLIC W/BROWN LEATHER INTERIOR, CARFAX REPORTS 2 OWNERS, APPEARS TO BE A NON-SMOKER, PASSPORT 9500CI RADAR DETECTOR, FOGLIGHTS, FRONT & REAR PARK DISTANCE SENSORS, SUNROOF, NAVIGATION, BACK-UP CAMERA, POWER WINDOWS, POWER DOOR LOCKS, POWER FOLDING HEATED MIRRORS, BLIND SPOT CONTROL, POWER & HEATED TILT/TELESCOPE STEERING WHEEL WITH AUDIO CONTROLS, CRUISE CONTROL, PADDLE SHIFTERS, DUAL POWER HEATED & COOLED FRONT SEATS WITH 3 MEMORY POSITION, PSM CONTROL, SPORT BUTTON, ON/OFF ROAD CONTROL, HILL DESCENT CONTROL, COMFORT/NORMAL/SPORT SUSPENSION CONTROL, RIDE HEIGHT CONTROL, ICE COLD A/C, DUAL CLIMATE CONTROL, BOSE HD AM/FM/XM STEREO WITH CD PLAYER, BLUETOOTH, SELF DIMMING REAR VIEW MIRROR, HOMELINK GARAGE CONTROLS, DUAL LIGHTED VANITY MIRRORS, REAR HEATED SEATS, REAR A/C CONTROL & VENTS, POWER SIDE REAR WINDOW SUNSHADE, CARGO COVER, POWER LIFTGATE, TOW PACKAGE WITH RECEIVER HITCH, FLOOR MATS, NO OWNER'S MANUAL, 2 KEYS/2 REMOTES. 21 IN ALUMINUM WHEELS, FRONT TIRES ARE CONTINENTAL 295/35ZR/21 WITH APPROX 90% TREAD LIFE REMAINING, REAR TIRES ARE BRAND NEW CONTINENTAL 295/35ZR/21. RUNS AND DRIVES GREAT. GIVE US A CALL @ 972-242-5350 OR STOP BY FOR A TEST DRIVE. 1724 LUNA RD IN CARROLLTON - 2 MILES NORTH OF 635. CLICK ON CARFAX ICON TO VIEW A FULL REPORT AT NO COST TO YOU.

2014 Porsche Cayenne Turbo AWD ROOF,NAV,BACK-UP,HTD/COOL LTH,21'S,73K!  
PSv5 DEMO - Southside Used - 844-290-3907 - View this car on our website at [6e2ad586-b84f-49fc-ac4f-2b3a61d89edd.autorevo-websites.com/6690943/ebrochure](http://6e2ad586-b84f-49fc-ac4f-2b3a61d89edd.autorevo-websites.com/6690943/ebrochure)

### Our Location :



2014 Porsche Cayenne Turbo AWD ROOF,NAV,BACK-UP,HTD/COOL LTH,21'S,73K!  
PSv5 DEMO - Southside Used - 844-290-3907 - View this car on our website at [6e2ad586-b84f-49fc-ac4f-2b3a61d89edd.autorevo-websites.com/6690943/ebrochure](http://6e2ad586-b84f-49fc-ac4f-2b3a61d89edd.autorevo-websites.com/6690943/ebrochure)

## Installed Options

### Interior

- 14-Way Adaptive Sport Seats w/Comfort/Memory Pkg -inc: 3-stage heating w/separate controls for left and right, and 4-way lumbar
- 40-20-40 Folding Split-Bench Front Facing Heated Manual Reclining Flip Forward Cushion/Seatback Rear Seat w/Manual Fore/Aft
- Driver And Passenger Visor Vanity Mirrors w/Driver And Passenger Illumination, Driver And Passenger Auxiliary Mirror
- Dual Zone Front Automatic Air Conditioning
- Full Carpet Floor Covering -inc: Carpet Front And Rear Floor Mats
- Full Leather Seat Trim
- Gauges -inc: Speedometer, Odometer, Oil Pressure, Engine Coolant Temp, Tachometer, Altimeter, Turbo/Supercharger Boost, Oil Temperature, Trip Odometer and Trip Computer
- Memory Settings -inc: Driver And Passenger Seats, Door Mirrors, Steering Wheel and HVAC
- Power 1st Row Windows w/Front And Rear 1-Touch Up/Down
- Power Door Locks w/Autolock Feature
- Power Rear Windows and Fixed 3rd Row Windows
- Power Tilt/Telescoping Steering Column
- Remote Keyless Entry w/Integrated Key Transmitter, 4 Door Curb/Courtesy, Illuminated Entry, Illuminated Ignition Switch and Panic Button
- Remote Releases -Inc: Power Cargo Access and Power Fuel
- Seats w/Leather Back Material
- Sport Leather/Metal-Look Steering Wheel w/Auto Tilt-Away- Trip Computer
- 2 Seatback Storage Pockets- 5 12V DC Power Outlets- Air Filtration- Analog Display
- Cargo Area Concealed Storage- Cargo Features -inc: Spare Tire Mobility Kit
- Cargo Space Lights- Carpet Floor Trim and Carpet Trunk Lid/Rear Cargo Door Trim

- Compass- Cruise Control- Day-Night Auto-Dimming Rearview Mirror
- Delay Off Interior Lighting- Delayed Accessory Power- Driver Foot Rest- Driver Seat
- Engine Immobilizer- FOB Controls -inc: Trunk/Hatch/Tailgate and Windows
- Front And Rear Map Lights- Front Center Armrest and Rear Center Armrest
- Front Cupholder- Full Alcantara Simulated Suede Headliner
- Full Floor Console w/Covered Storage, Mini Overhead Console and 5 12V DC Power Outlets
- HVAC -inc: Underseat Ducts and Console Ducts - HomeLink Garage Door Transmitter
- Illuminated Locking Glove Box
- Interior Trim -inc: Aluminum Instrument Panel Insert, Aluminum Door Panel Insert, Aluminum Console Insert, Metal-Look Interior Accents and Leather Upholstered Dashboard
- Leather Door Trim Insert- Leather/Metal-Look Gear Shift Knob
- Manual Adjustable Front Head Restraints and Manual Adjustable Rear Head Restraints
- Outside Temp Gauge- Passenger Seat- Perimeter Alarm- Rear Cupholder
- Redundant Digital Speedometer
- Refrigerated/Cooled Box Located In The Glovebox, Driver / Passenger And Rear Door Bins and 1st Row Underseat Storage
- Roll-Up Cargo Cover- Systems Monitor- Trunk/Hatch Auto-Latch

---

## Exterior

- Compact Spare Tire Mounted Inside Under Cargo
- Express Open/Close Sliding And Tilting Glass 1st Row Sunroof w/Sunshade
- Fully Automatic Projector Beam High Intensity Low/High Beam Daytime Running Auto-Leveling Directionally Adaptive Headlamps w/Washer and Delay-Off
- Lip Spoiler- Power Liftgate Rear Cargo Access
- Tailgate/Rear Door Lock Included w/Power Door Locks
- Tires: P265/50R19 AS -inc: With optimized rolling resistance - Tires: P295/35R21
- Wheels w/Machined Accents w/Locks- Wheels w/Silver Accents w/Locks
- Wheels: 10J x 21" ET 50 911 Turbo II -inc: wheel arch extensions
- Wheels: 8.5J x 19" ET 59 Cayenne Turbo
- Aluminum Side Windows Trim and Black Front Windshield Trim - Black Wheel Well Trim
- Body-Colored Door Handles- Body-Colored Front Bumper- Body-Colored Grille
- Body-Colored Power Heated Auto Dimming Side Mirrors w/Power Folding
- Body-Colored Rear Bumper- Cornering Lights- Deep Tinted Glass
- Fixed Rear Window w/Fixed Interval Wiper and Defroster - Front And Rear Fog Lamps
- Front Windshield -inc: Sun Visor Strip- Fully Galvanized Steel Panels- LED Brakeights
- Metallic Paint- Perimeter/Approach Lights
- Rain Detecting Variable Intermittent Wipers w/Heated Jets - Spare Tire Mobility Kit
- Steel Spare Wheel

---

## Safety

- 14-Way Adaptive Sport Seats w/Comfort/Memory Pkg -inc: 3-stage heating w/separate controls for left and right, and 4-way lumbar
- 40-20-40 Folding Split-Bench Front Facing Heated Manual Reclining Flip Forward Cushion/Seatback Rear Seat w/Manual Fore/Aft
- Driver And Passenger Visor Vanity Mirrors w/Driver And Passenger Illumination, Driver And Passenger Auxiliary Mirror
- Dual Zone Front Automatic Air Conditioning
- Full Carpet Floor Covering -inc: Carpet Front And Rear Floor Mats
- Full Leather Seat Trim
- Gauges -inc: Speedometer, Odometer, Oil Pressure, Engine Coolant Temp, Tachometer, Altimeter, Turbo/Supercharger Boost, Oil Temperature, Trip Odometer and Trip Computer
- Memory Settings -inc: Driver And Passenger Seats, Door Mirrors, Steering Wheel and HVAC
- Power 1st Row Windows w/Front And Rear 1-Touch Up/Down
- Power Door Locks w/Autolock Feature
- Power Rear Windows and Fixed 3rd Row Windows
- Power Tilt/Telescoping Steering Column
- Remote Keyless Entry w/Integrated Key Transmitter, 4 Door Curb/Courtesy, Illuminated Entry, Illuminated Ignition Switch and Panic Button
- Remote Releases -Inc: Power Cargo Access and Power Fuel
- Seats w/Leather Back Material
- Sport Leather/Metal-Look Steering Wheel w/Auto Tilt-Away- Trip Computer
- 2 Seatback Storage Pockets- 5 12V DC Power Outlets- Air Filtration- Analog Display
- Cargo Area Concealed Storage- Cargo Features -inc: Spare Tire Mobility Kit
- Cargo Space Lights- Carpet Floor Trim and Carpet Trunk Lid/Rear Cargo Door Trim
- Compass- Cruise Control- Day-Night Auto-Dimming Rearview Mirror
- Delay Off Interior Lighting- Delayed Accessory Power- Driver Foot Rest- Driver Seat
- Engine Immobilizer- FOB Controls -inc: Trunk/Hatch/Tailgate and Windows
- Front And Rear Map Lights- Front Center Armrest and Rear Center Armrest
- Front Cupholder- Full Alcantara Simulated Suede Headliner
- Full Floor Console w/Covered Storage, Mini Overhead Console and 5 12V DC Power

#### Outlets

- HVAC -inc: Underseat Ducts and Console Ducts - HomeLink Garage Door Transmitter
- Illuminated Locking Glove Box
- Interior Trim -inc: Aluminum Instrument Panel Insert, Aluminum Door Panel Insert, Aluminum Console Insert, Metal-Look Interior Accents and Leather Upholstered Dashboard
- Leather Door Trim Insert- Leather/Metal-Look Gear Shift Knob
- Manual Adjustable Front Head Restraints and Manual Adjustable Rear Head Restraints
- Outside Temp Gauge- Passenger Seat- Perimeter Alarm- Rear Cupholder
- Redundant Digital Speedometer
- Refrigerated/Cooled Box Located In The Glovebox, Driver / Passenger And Rear Door Bins and 1st Row Underseat Storage
- Roll-Up Cargo Cover- Systems Monitor- Trunk/Hatch Auto-Latch

#### Mechanical

- Automatic Rear Locking Differential- Double Wishbone Front Suspension w/Air Springs
- Electro-Mechanical Limited Slip Differential- Engine: 4.8L V8 w/Twin Turbochargers & DFI
- Front And Rear Active Anti-Roll Bars- Front And Rear Anti-Roll Bars
- Gas-Pressurized Shock Absorbers- Multi-Link Rear Suspension w/Air Springs
- Transmission w/Driver Selectable Mode, Tiptronic S Sequential Shift Control w/Steering Wheel Controls and Oil Cooler
- Transmission: 8-Speed Tiptronic S Automatic -inc: start/stop function
- 1565lbs. Maximum Payload- 2.92 Axle Ratio- 26.4 Gal. Fuel Tank
- 4-Corner Auto-Leveling Suspension
- 4-Wheel Disc Brakes w/4-Wheel ABS, Front And Rear Vented Discs, Brake Assist, Hill Descent Control, Hill Hold Control and Electric Parking Brake
- 92-Amp/Hr Maintenance-Free Battery
- Automatic w/Driver Control Height Adjustable Automatic w/Driver Control Ride Control Adaptive Suspension
- Dual Stainless Steel Exhaust w/Powdercoated Tailpipe Finisher
- Engine Auto Stop-Start Feature- Engine Oil Cooler- Full-Time All-Wheel Drive
- GVWR: 2,880 kgs (6,349 lbs)- Hydraulic Power-Assist Speed-Sensing Steering
- Permanent Locking Hubs- Towing Equipment -inc: Trailer Sway Control

All vehicles are sold as-is, where is. No warranty expressed or implied. It is the customer's sole responsibility to verify the existence and condition of any equipment listed. Neither the dealership nor AutoRevo is responsible for misprints on prices or equipment. It is the customer's sole responsibility to verify the accuracy of the prices with the dealer. Pricing subject to change without notice.

PSv5 DEMO - Southside Used

[6e2ad586-b84f-49fc-ac4f-2b3a61d89edd.autorevo-websites.com](https://6e2ad586-b84f-49fc-ac4f-2b3a61d89edd.autorevo-websites.com)

844-290-3907

807 SE Military Drive

San Antonio, TX 78214

© 2024 AutoRevo - All rights reserved. - Powered by AutoRevo