

## 2008 Chevrolet Silverado 1500 LT w/1LT

**First Auto Credit 573-204-7777**

View this car on our website at [firstautocredit.com/6688598/ebrochure](http://firstautocredit.com/6688598/ebrochure)



Our Price **\$9,900**

### Specifications:

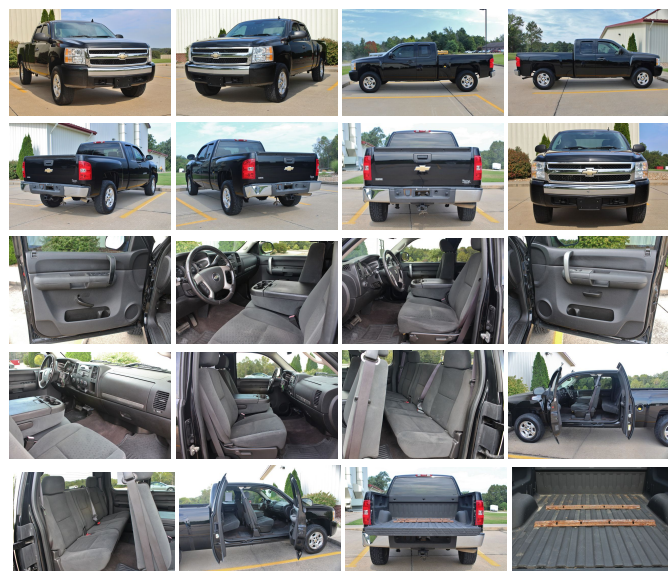
<b>Year:</b>	2008
<b>VIN:</b>	1GCEK19038Z238733
<b>Make:</b>	Chevrolet
<b>Stock:</b>	9139D
<b>Model/Trim:</b>	Silverado 1500 LT w/1LT
<b>Condition:</b>	Pre-Owned
<b>Body:</b>	Pickup Truck
<b>Exterior:</b>	Black
<b>Engine:</b>	ENGINE, VORTEC 5.3L V8 SFI FLEXFUEL WITH ACTIVE FUEL MANAGEMENT
<b>Interior:</b>	Gray Cloth
<b>Transmission:</b>	TRANSMISSION, 4-SPEED AUTOMATIC, SUPER-DUTY
<b>Mileage:</b>	203,039
<b>Drivetrain:</b>	4 Wheel Drive
<b>Economy:</b>	City 14 / Highway 20

### 2008 Chevrolet Silverado 1500 LT 4x4

This Chevy Extended Cab is equipped with 4 Wheel Drive, Cruise, AM/FM/CD/AUX, Power Windows/Locks/Mirrors, OnStar Capability & more! It has a strong running 5.3L V8 Engine, a 4-speed Automatic Transmission and 203k miles. We have financing available and we accept trades! Fill out a credit application on our website or stop by the dealership today!

If you have any questions, give us a call at (573) 204-7777 or visit our website at <https://firstautocredit.com>.

This vehicle is also for sale locally, so auction may end at any time. First Auto Credit does offer after market warranties.



## Our Location :



2008 Chevrolet Silverado 1500 LT w/1LT

First Auto Credit - 573-204-7777 - View this car on our website at [firstautocredit.com/6688598/ebrochure](http://firstautocredit.com/6688598/ebrochure)

## Installed Options

### Interior

- Air conditioning, single-zone manual front climate control
- Assist handle, front passenger (Also includes rear assist handles in the headliner on Extended and Crew Cab Models.)
- Coat hooks, rear driver and passenger side
- Cruise control, electronic with set and resume speed, located on steering wheel
- Cup holders, front (Also includes rear cupholders on Extended and Crew Cab models.)
- Defogger, rear-window electric (Not available with (A48) power sliding rear window.)
- Door locks, power
- Driver Information Center with odometer, trip odometer and message center (monitors numerous systems depending on vehicle equipment level including low fuel, turn signal "on", transmission temperature and oil change notification) (Driver Information Center controls are operated through the trip button unless (UK3) steering wheel mounted audio controls is ordered.)
- Floor covering, color-keyed carpeting with rubberized vinyl floor mats (Extended and Crew Cab models also include rear floor mats) (May be substituted with (BG9) Black rubberized vinyl floor covering.)
- Instrumentation, analog with speedometer, odometer, fuel level, engine temperature, and tachometer (Includes voltmeter and oil pressure indicators.)
- Lighting, interior with dome and reading lights, illuminated entry feature and backlit instrument panel switches
- Mirror, inside rearview auto-dimming with 8-point compass and outside temperature display
- Power outlets, 2 auxiliary instrument panel-mounted with covers, 12-volt
- Remote Keyless Entry with 2 transmitters, panic button and content theft alarm
- Remote vehicle starter prep package, includes Remote Keyless Entry (To enable remote start capability, new key fobs and vehicle reprogramming are required. Please see dealer for details. Remote Keyless Entry does not lock/unlock tailgate when (PDF) EZ-Lift Tailgate Package is ordered.)
- Seat adjuster, manual lumbar control on the driver-side- Seat trim, Select Cloth
- Seat, rear 60/40 folding bench (folds up), 3-passenger, folding (includes child seat top tether anchor) (Requires Extended or Crew Cab Models.)
- Seats, front 40/20/40 split-bench, 3-passenger, driver and front passenger manual reclining center fold-down armrest with storage. lockable storage compartment in seat cushion

(includes auxiliary power outlet), adjustable outboard head restraints and storage pockets on Extended and Crew Cab models

- Steering column, Tilt-Wheel, adjustable with brake/transmission shift interlock
- Steering wheel, leather-wrapped with theft-deterrent locking feature
- Visors, driver and front passenger, sliding with clip and illuminated vanity mirror on driver and passenger-side, Opal Gray-colored
- Warning tones, headlamp on, key-in-ignition, driver and passenger buckle up reminder and turn signal on
- Windows, power with driver Express-Down
- Windows, power, rear access door (Requires Extended Cab Models.)

---

## Exterior

- Air dam, Black- Bumper, front chrome (Includes body-color bumper end caps.)
- Bumper, rear chrome, step-style with pad- Door handles, Black
- Glass, Solar-Ray deep-tinted (all windows except light-tinted glass on windshield and driver and front passenger-side glass) (With Regular Cab models, includes rear window. With Extended Cab models, includes rear and rear quarter windows. With Crew Cab models or (C49) rear-window defogger, includes light-tinted rear window.)
- Grille, chrome surround
- Headlamps, dual halogen composite with automatic exterior lamp control and flash-to-pass feature
- Lamps, dual cargo area lamps
- Mirrors, outside heated power-adjustable, Black, manual-folding (Upgradable to (DPN) outside vertical camper mirrors.)
- Moldings, bodyside, body-colored
- Spare tire lock, keyed cylinder lock that utilizes same key as ignition and door
- Tire carrier, outside spare, winch-type mounted under frame at rear
- Tires, P265/70R17 all-season, blackwall (Requires 4WD models. Not available with (Z71) Off-Road Suspension Package or (L76) Vortec 6.0L V8 SFI engine.)
- Wheel, 17" (43.2 cm) steel spare (spare wheel will not cosmetically match the other 4 wheels)
- Wheels, 4 - 17" x 7.5" (43.2 cm x 19.1 cm) 6-lug chrome-styled steel includes chrome center caps (spare wheel will not cosmetically match the other 4 wheels) (Upgradable to (N56) 4 - 17" x 7.5" (43.2 cm x 19.1 cm) 6-lug custom aluminum wheels, (N87) 4 - 18" x 8" (45.7 cm x 20.3 cm) aluminum wheels or (P58) 4 - 20" x 8.5" (50.8 cm x 21.6 cm) 5-spoke machined aluminum wheels. Not available with (Z71) Off-Road Suspension Package.)
- Wipers, front intermittent wet-arm with pulse washers

---

## Safety

- Air conditioning, single-zone manual front climate control
- Assist handle, front passenger (Also includes rear assist handles in the headliner on Extended and Crew Cab Models.)
- Coat hooks, rear driver and passenger side
- Cruise control, electronic with set and resume speed, located on steering wheel
- Cup holders, front (Also includes rear cupholders on Extended and Crew Cab models.)
- Defogger, rear-window electric (Not available with (A48) power sliding rear window.)
- Door locks, power
- Driver Information Center with odometer, trip odometer and message center (monitors numerous systems depending on vehicle equipment level including low fuel, turn signal "on", transmission temperature and oil change notification) (Driver Information Center controls are operated through the trip button unless (UK3) steering wheel mounted audio controls is ordered.)
- Floor covering, color-keyed carpeting with rubberized vinyl floor mats (Extended and Crew Cab models also include rear floor mats) (May be substituted with (BG9) Black rubberized vinyl floor covering.)
- Instrumentation, analog with speedometer, odometer, fuel level, engine temperature, and tachometer (Includes voltmeter and oil pressure indicators.)
- Lighting, interior with dome and reading lights, illuminated entry feature and backlit instrument panel switches
- Mirror, inside rearview auto-dimming with 8-point compass and outside temperature display
- Power outlets, 2 auxiliary instrument panel-mounted with covers, 12-volt
- Remote Keyless Entry with 2 transmitters, panic button and content theft alarm
- Remote vehicle starter prep package, includes Remote Keyless Entry (To enable remote start capability, new key fobs and vehicle reprogramming are required. Please see dealer for details. Remote Keyless Entry does not lock/unlock tailgate when (PDF) EZ-Lift Tailgate Package is ordered.)
- Seat adjuster, manual lumbar control on the driver-side- Seat trim, Select Cloth
- Seat, rear 60/40 folding bench (folds up), 3-passenger, folding (includes child seat top tether anchor) (Requires Extended or Crew Cab Models.)
- Seats, front 40/20/40 split-bench, 3-passenger, driver and front passenger manual reclining center fold-down armrest with storage, lockable storage compartment in seat cushion (includes auxiliary power outlet), adjustable outboard head restraints and storage pockets on Extended and Crew Cab models
- Steering column, Tilt-Wheel, adjustable with brake/transmission shift interlock
- Steering wheel, leather-wrapped with theft-deterrent locking feature
- Visors, driver and front passenger, sliding with clip and illuminated vanity mirror on driver and passenger-side, Opal Gray-colored

- Warning tones, headlamp on, key-in-ignition, driver and passenger buckle up reminder and turn signal on
- Windows, power with driver Express-Down
- Windows, power, rear access door (Requires Extended Cab Models.)

## Mechanical

- Alternator, 145 amps
- Battery, heavy-duty 600 cold-cranking amps, maintenance-free with rundown protection and retained accessory power
- Engine, Vortec 4.8L V8 SFI (295 hp [220.0 kW] @ 5600 rpm, 305 lb-ft torque [411.8 N-m] @ 4800 rpm), iron block (Standard on all models except C\*10953 Models. Not available on C\*10953 models.)
- Exhaust, aluminized stainless-steel muffler and tailpipe- Four wheel drive
- Frame, hydroformed
- GVWR, 7000 lbs. (3175 kg) (Requires CC10753 models and (L76) Vortec 6.0L V8 SFI engine and (NHT) Max Trailering Pack or CK10753, CK10953, or CK10543 models. Standard on CK10753, CK10953, or CK10543 models.)
- Pickup box, Fleetside
- Recovery hooks, front, frame-mounted (Standard on 4WD Models.)
- Steering, power, rack-and-pinion- Suspension, front independent, coil over shock
- Suspension, rear 2-stage multi-leaf springs, semi-elliptic
- Transfer case, electronic Autotrac with rotary dial controls (Requires 4WD models.)
- Transmission, 4-speed automatic, electronically controlled with overdrive and tow/haul mode

## Option Packages

### Factory Installed Packages

-

#### ENGINE, VORTEC 5.3L V8 SFI FLEXFUEL WITH ACTIVE FUEL MANAGEMENT

capable of running on unleaded or up to 85% ethanol, (315 hp [234.9 kW] @ 5200 rpm, 338 lb-ft of torque [456.3 N-m] @ 4400 rpm), iron block

-

#### TRANSMISSION, 4-SPEED AUTOMATIC, SUPER-DUTY

-

#### LT PREFERRED EQUIPMENT GROUP

includes standard equipment

First Auto Credit

[firstautocredit.com](http://firstautocredit.com)

573-204-7777

2990 Old Orchard Rd

Jackson , MO 63755

© 2019 AutoRevo - All rights reserved. - Powered by AutoRevo