



2018 Ford Focus SE Hatchback

View this car on our website at cullmanautorebuilders.com/6688577/ebrochure

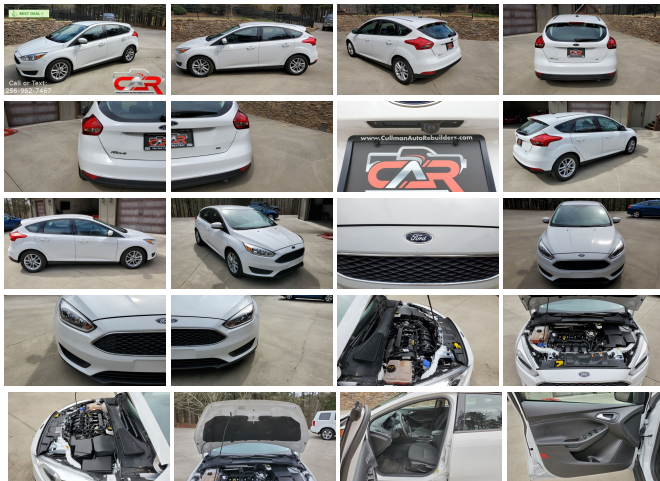


Our Price **\$9,995**

Retail Value **\$13,414**

Specifications:

Year:	2018
VIN:	1FADP3K25JL231673
Make:	Ford
Model/Trim:	Focus SE Hatchback
Condition:	Pre-Owned
Body:	Hatchback
Exterior:	Oxford White
Engine:	ENGINE: 2.0L I-4 GDI TI-VCT
Interior:	Charcoal Black Cloth
Transmission:	TRANSMISSION: 6-SPEED POWERSHIFT AUTOMATIC
Mileage:	32,478
Drivetrain:	Front Wheel Drive
Economy:	City 26 / Highway 38



► 38MPG! ► VERY CLEAN! ► 32k MILES! ► BACK UP CAMERA! ► AUTOMATIC! ► EXCELLENT COMMUTER / DAILY DRIVER!

Call, text, or message to setup an appointment to check out this 2018 Ford Focus SE Hatchback with 32k miles! It's a nice car that runs out and drives great. It's passed through our service department where it checked out fine with no issues. There are NO check engine or warning lights on in the dash and everything works like it should. The engine sounds great and the six speed automatic transmission shifts perfect. The air blows super cold and heat is hot! The tires have 80% tread left. This car is an SE model and has power windows, door locks, keyless entry, SYNC audio system with Bluetooth phone integration, Sirius XM, USB input, and steering wheel cruise, audio, and phone controls. The black cloth interior is very clean and in like new condition. The white exterior is in very good condition as well with no dings! This would make a great car for anyone – whether you're buying it for a first time driver or using it yourself as a daily commuter to work. We've sold many of these - all customers happy with them! Without a doubt this is the cleanest 2018 Ford Focus SE Hatchback on the market for the year and miles! You won't find a nicer one for the price I promise! DON'T MISS IT!! See our site for over 60 detailed pics! Buy with confidence: Check out our ALL 5 STAR Google and Facebook reviews and see how happy customers are with the QUALITY and PRICES of our vehicles! We've been doing this since 2001. Like our Facebook page "Cullman Auto Rebuilders" to keep up with the great deals as they're posted! We are HONEST about what we sell! **If you need financing – apply online with Alabama Credit Union.**

REASON FOR ALABAMA REBUILT TITLE (REBUILT MEANS ROAD READY/ROAD WORTHY) CAN BE TITLED / REGISTERED / INSURED WITH EASE IN ALL STATES AND IN CANADA // This 2018 Ford Focus SE Hatchback will come with a REBUILT state of Alabama title due to a (PREVIOUS) undercarriage damage insurance claim - SOMEONE RAN OVER A PIECE OF WOOD IN THE HIGHWAY - THE ENGINE AND TRANSMISSION SUSTAINED NO DAMAGE! WE CHECKED THE SUSPENSION COMPONENTS FOR DAMAGE & SENT TO ALIGNMENT! / IT IS READY FOR THE ROAD – THERE ARE NO SIGNS OF PREVIOUS REPAIR! / Since then it has passed the Alabama inspection process and issued the Rebuilt Title as mentioned above — Similar CLEAR title vehicles (2018 Ford Focus SE Hatchback) retail up to \$13,414 easily similarly equipped with like mileage but you can own this one for THOUSANDS less! Without a doubt this is the cleanest best priced 2018 Ford Focus SE Hatchback on the market for the year and miles!

2018 Ford Focus SE Hatchback

Cullman Auto Rebuilders - 256-962-7467 - View this car on our website at cullmanautorebuilders.com/6688577/ebrochure

Our Location :



2018 Ford Focus SE Hatchback

Cullman Auto Rebuilders - 256-962-7467 - View this car on our website at cullmanautorebuilders.com/6688577/ebrochure

Installed Options

Interior

- 1 Seatback Storage Pocket- 2 12V DC Power Outlets
- 60-40 Folding Bench Front Facing Flip Forward Cushion/Seatback Cloth Rear Seat
- Air Filtration- Analog Display- Cargo Area Concealed Storage- Cargo Space Lights
- Carpet Floor Trim- Cloth Door Trim Insert
- Cloth Front Bucket Seats -inc: 6-way manual driver (up/down, fore/aft, recline), 4-way manual passenger (fore/aft, recline) and removable adjustable head restraints (2-way)
- Compass- Cruise Control w/Steering Wheel Controls- Day-Night Rearview Mirror

- Delayed Accessory Power
- Driver And Passenger Visor Vanity Mirrors w/Driver And Passenger Illumination
- Driver Foot Rest- Driver Seat- FOB Controls -inc: Trunk/Hatch/Tailgate
- Fade-To-Off Interior Lighting- Front Center Armrest- Front Cupholder- Front Map Lights
- Full Carpet Floor Covering -inc: Carpet Front And Rear Floor Mats - Full Cloth Headliner
- Full Floor Console w/Covered Storage, Mini Overhead Console w/Storage and 2 12V DC Power Outlets
- Gauges -inc: Speedometer, Odometer, Engine Coolant Temp, Tachometer, Trip Odometer and Trip Computer
- Glove Box- HVAC -inc: Underseat Ducts
- Instrument Panel Bin, Driver / Passenger And Rear Door Bins
- Interior Trim -inc: Metal-Look Instrument Panel Insert, Metal-Look Door Panel Insert and Chrome Interior Accents
- Manual Adjustable Rear Head Restraints- Manual Air Conditioning
- Manual Tilt/Telescoping Steering Column- Outside Temp Gauge- Passenger Seat
- Power 1st Row Windows w/Driver 1-Touch Down - Power Door Locks w/Autolock Feature
- Power Rear Windows- Rear Cupholder
- Remote Keyless Entry w/Integrated Key Transmitter, Illuminated Entry and Panic Button
- Rigid Cargo Cover
- SYNC Communications & Entertainment System -inc: enhanced voice recognition, 911 Assist, 4.2" LCD display in center stack, AppLink, 1 smart charging USB port, and Bluetooth, SiriusXM service is not available in Alaska and Hawaii, SYNC AppLink lets you control some of your favorite compatible mobile apps w/your voice, It is compatible w/select smartphone platforms, Commands may vary by phone and AppLink software, Subscriptions to all SiriusXM services are sold by SiriusXM after trial period, If you decide to continue service after your trial, the subscription plan you choose will automatically renew thereafter and you will be charged according to your chosen payment method at then-current rates, Fees and taxes apply, To cancel you must call SiriusXM at 1-866-635-2349, See SiriusXM Customer Agreement for complete terms at www.siriusxm.com, All fees and programming subject to change, Sirius, XM and all related marks and logos are trademarks of SiriusXM Radio Inc
- Seats w/Cloth Back Material- Securilock Anti-Theft Ignition (pats) Engine Immobilizer
- Systems Monitor- Trip Computer- Urethane Gear Shift Knob

Exterior

- Black Grille w/Chrome Accents
- Black Side Windows Trim and Black Front Windshield Trim - Body-Colored Door Handles
- Body-Colored Front Bumper
- Body-Colored Power Side Mirrors w/Convex Spotter and Manual Folding
- Body-Colored Rear Bumper Clearcoat Paint
- Compact Spare Tire Mounted Inside Under Cargo
- Fixed Rear Window w/Fixed Interval Wiper, Heated Wiper Park and Defroster
- Fully Automatic Aero-Composite Halogen Headlamps w/Delay-Off
- Fully Galvanized Steel Panels- Liftgate Rear Cargo Access- Light Tinted Glass
- Lip Spoiler- Steel Spare Wheel- Tailgate/Rear Door Lock Included w/Power Door Locks
- Tires: P215/55R16- Variable Intermittent Wipers
- Wheels: 16" Sparkle Silver Painted Aluminum

Safety

- 1 Seatback Storage Pocket- 2 12V DC Power Outlets
- 60-40 Folding Bench Front Facing Flip Forward Cushion/Seatback Cloth Rear Seat
- Air Filtration- Analog Display- Cargo Area Concealed Storage- Cargo Space Lights
- Carpet Floor Trim- Cloth Door Trim Insert
- Cloth Front Bucket Seats -inc: 6-way manual driver (up/down, fore/aft, recline), 4-way manual passenger (fore/aft, recline) and removable adjustable head restraints (2-way)
- Compass- Cruise Control w/Steering Wheel Controls- Day-Night Rearview Mirror
- Delayed Accessory Power
- Driver And Passenger Visor Vanity Mirrors w/Driver And Passenger Illumination
- Driver Foot Rest- Driver Seat- FOB Controls -inc: Trunk/Hatch/Tailgate
- Fade-To-Off Interior Lighting- Front Center Armrest- Front Cupholder- Front Map Lights
- Full Carpet Floor Covering -inc: Carpet Front And Rear Floor Mats - Full Cloth Headliner
- Full Floor Console w/Covered Storage, Mini Overhead Console w/Storage and 2 12V DC Power Outlets
- Gauges -inc: Speedometer, Odometer, Engine Coolant Temp, Tachometer, Trip Odometer and Trip Computer
- Glove Box- HVAC -inc: Underseat Ducts
- Instrument Panel Bin, Driver / Passenger And Rear Door Bins
- Interior Trim -inc: Metal-Look Instrument Panel Insert, Metal-Look Door Panel Insert and Chrome Interior Accents
- Manual Adjustable Rear Head Restraints- Manual Air Conditioning
- Manual Tilt/Telescoping Steering Column- Outside Temp Gauge- Passenger Seat
- Power 1st Row Windows w/Driver 1-Touch Down - Power Door Locks w/Autolock Feature
- Power Rear Windows- Rear Cupholder
- Remote Keyless Entry w/Integrated Key Transmitter, Illuminated Entry and Panic Button

- Rigid Cargo Cover
- SYNC Communications & Entertainment System -inc: enhanced voice recognition, 911 Assist, 4.2" LCD display in center stack, AppLink, 1 smart charging USB port, and Bluetooth, SiriusXM service is not available in Alaska and Hawaii, SYNC AppLink lets you control some of your favorite compatible mobile apps w/your voice. It is compatible w/select smartphone platforms, Commands may vary by phone and AppLink software, Subscriptions to all SiriusXM services are sold by SiriusXM after trial period. If you decide to continue service after your trial, the subscription plan you choose will automatically renew thereafter and you will be charged according to your chosen payment method at then-current rates, Fees and taxes apply, To cancel you must call SiriusXM at 1-866-635-2349, See SiriusXM Customer Agreement for complete terms at www.siriusxm.com, All fees and programming subject to change, Sirius, XM and all related marks and logos are trademarks of SiriusXM Radio Inc
- Seats w/Cloth Back Material- Securilock Anti-Theft Ignition (pats) Engine Immobilizer
- Systems Monitor- Trip Computer- Urethane Gear Shift Knob

Mechanical

- 12.4 Gal. Fuel Tank- 3.85 Axle Ratio
- 50-State Emissions System -inc: Standard equipment on all Focus trim levels
- 590CCA Maintenance-Free Battery w/Run Down Protection
- Brake Actuated Limited Slip Differential - Electric Power-Assist Steering
- Engine: 2.0L I-4 GDI Ti-VCT- Front And Rear Anti-Roll Bars
- Front Disc/Rear Drum Brakes w/4-Wheel ABS, Front Vented Discs, Brake Assist and Hill Hold Control
- Front-Wheel Drive- Gas-Pressurized Shock Absorbers
- Short And Long Arm Rear Suspension w/Coil Springs- Single Stainless Steel Exhaust
- Strut Front Suspension w/Coil Springs
- Transmission: 6-Speed PowerShift Automatic Does not include SelectShift.

Option Packages

Factory Installed Packages

ENGINE: 2.0L I-4 GDI TI-VCT

TRANSMISSION: 6-SPEED
POWERSHIFT AUTOMATIC

EQUIPMENT GROUP 200A

STANDARD PAINTOXFORD WHITE

CHARCOAL BLACK, CLOTH FRONT
BUCKET SEATS

-inc: 6-way manual driver
(up/down, fore/aft, recline), 4-
way manual passenger
(fore/aft, recline) and
removable adjustable head
restraints (2-way)

Disclaimer: We pride ourselves on carrying quality used vehicles and recommend that all potential buyers conduct an inspection themselves or through a third party inspector. We strive to describe vehicle condition, featured options, and photos to the best of our abilities. As with any used vehicle, minor signs of wear may be more noticeable upon closer inspection, such as small chips and nicks, light scratches, wheel scuffs, and other signs of normal wear and tear. It is the customer's sole responsibility to verify the existence and condition of any vehicle, featured equipment options, and pricing. All vehicles are sold with Alabama Rebuilt Title unless otherwise stated in listing.



cullmanautorebuilders.com

256-962-7467

1712 Tally Ho Street

Cullman, AL 35055

© 2020 AutoRevo - All rights reserved. - Powered by AutoRevo