



2016 Chevrolet Impala LTZ

Benjamin Shives 7043941156

Our Price \$22,500

View this vehicle on our website at littlerockautosalesinc.com

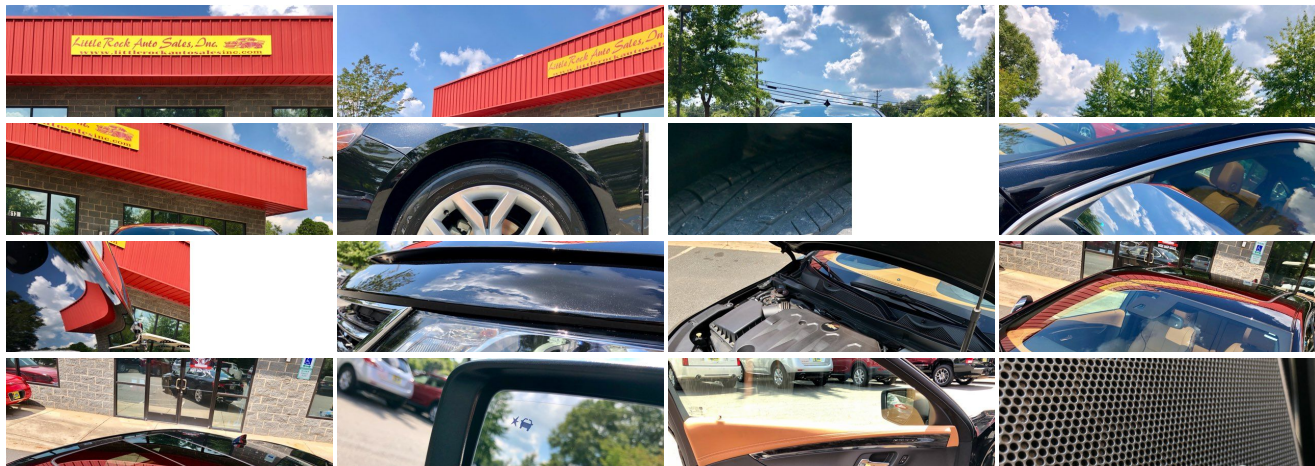
[7043941156](tel:7043941156)

8130 Wilkinson Blvd , Charlotte, NC 28214

Photos

Details

Contact





Specifications:

Year:	2016
VIN:	1G1145S34GU153070
Make:	Chevrolet
Model/Trim:	Impala LTZ
Condition:	Pre-Owned
Body:	Sedan
Exterior:	Mosaic Black Metallic
Engine:	ENGINE, 3.6L DOHC V6 DI WITH VARIABLE VALVE TIMING (VVT)
Interior:	Jet Black/Mojave Leather
Transmission:	TRANSMISSION, 6-SPEED AUTOMATIC, ELECTRONICALLY-CONTROLLED WITH OVERDRIVE
Mileage:	20,193
Drivetrain:	Front Wheel Drive
Economy:	City 19 / Highway 29

Vehicle Description

- LITTLE ROCK AUTO SALES INC. FAMILY RUN AND OPERATED IN CHARLOTTE NC SINCE 1965!! CALL US FOR ALL YOUR AUTOMOTIVE NEEDS WE ARE A COMPLETE ONE STOP FACILITY...SALES AND SERVICE!! WE WANT TO BE YOUR FAMILY DEALERSHIP.....

Installed Options

Interior

- Air conditioning, dual-zone automatic climate control with individual climate settings for driver and front passenger
- Armrest, rear center- Assist handles, driver, front passenger and rear outboard
- Brake, park, electronic push button powered located on instrument panel left of steering wheel
- Cargo convenience net, trunk
- Compass display, located in the Driver Information Center
- Console, floor, uplevel with covered storage
- Cruise control, electronic with set and resume speed - Defogger, rear-window
- Driver Information Center, color display includes trip/fuel information, vehicle information and vehicle messages
- Floor mats, carpeted front- Floor mats, carpeted rear
- Head restraints, 4-way adjustable, up/down, fore/aft, front
- Head restraints, rear, adjustable, folding
- Instrumentation, analog with speedometer, tachometer, engine temperature and fuel gauge with color Driver Information Center
- Keyless Access, passive entry- Keyless start, push button
- Lamp, interior, ambient instrument panel- Lamp, interior, ambient, door
- Lighting, interior with theater dimming, delayed entry/exit, glovebox and trunk
- Map pockets, driver and front passenger seatbacks
- Mirror, inside rearview manual day/night
- Power outlet, auxiliary, 12-volt located forward of console, below the HVAC controls
- Power outlets, 2, auxiliary, 12-volt located on front of console and inside console
- Remote vehicle starter system- Seat adjuster, driver 8-way power
- Seat adjuster, driver power lumbar- Seat adjuster, front passenger 8-way power
- Seat adjuster, front passenger power lumbar- Seat trim, perforated leather-appointed
- Seat, rear 60/40 split-folding- Seats, front bucket
- Seats, heated driver and front passenger - Shift knob, leather-wrapped
- Steering column, manual tilt and telescopic- Steering wheel, 4-spoke leather-wrapped
- Storage, innovative, hidden behind 8" diagonal touch screen with valet-mode lockable, rear armrest, front and rear door panels, reconfigurable console with removable cup holders, dedicated umbrella storage in front door and hidden storage in trunk

Option Packages

Factory Installed Packages

ENGINE, 3.6L DOHC V6 DI WITH VARIABLE VALVE TIMING (VVT)

(305 hp [227.4 kW] @ 6800 rpm, 264 lb-ft of torque [356.4 N-m] @ 5200 rpm)

TRANSMISSION, 6-SPEED AUTOMATIC, ELECTRONICALLY-CONTROLLED WITH OVERDRIVE

ADVANCED TECHNOLOGY PACKAGE

includes (UQS) Bose premium surround sound 11-speaker system, (K4C) Wireless Charging and (KI6) 120-volt power outlet

\$735

AUDIO SYSTEM FEATURE, BOSE CENTERPOINT SURROUND SOUND PREMIUM 11-SPEAKER SYSTEM, SOUND-STAGE SIGNAL PROCESSING

CRUISE CONTROL, ADAPTIVE, FULL RANGE

with collision mitigation braking

\$1,195

DRIVER MEMORY

recalls 2 driver "presets" for 8-way power driver seat, tilt/telescoping steering column and outside mirrors

ENHANCED CONVENIENCE PACKAGE

includes (KU1) ventilated driver seat, (KU3) ventilated front passenger seat, (UVD) heated steering wheel, (N38) power tilt and telescoping steering column, (A45) driver seat, outside

\$1,035

- Theft-deterrent system- Trunk opening touch pad
- Trunk release, power located inside on instrument panel left of steering wheel
- Vent, rear console, air- Visors, driver and front passenger illuminated vanity mirrors
- Window, power with driver Express-Up and Down
- Windows, power with Express-Down on all

Exterior

- Tire, compact spare, T125/70R17- Door handles, chrome with body-color strip
- Glass, acoustic, laminated front-side and windshield
- Headlamp control, automatic on and off- Headlamps, high intensity discharge
- Mirrors, outside heated power-adjustable manual-folding with integrated turn signal indicators and ground illumination (Chrome mirror caps.)
- Tires, P245/45R19 all-season, blackwall- Wheel, compact spare, 17" (43.2 cm) steel
- Wheels, 19" (48.3 cm) machined-face aluminum- Wipers, front intermittent

Safety

- Air conditioning, dual-zone automatic climate control with individual climate settings for driver and front passenger
- Armrest, rear center- Assist handles, driver, front passenger and rear outboard
- Brake, park, electronic push button powered located on instrument panel left of steering wheel
- Cargo convenience net, trunk
- Compass display, located in the Driver Information Center
- Console, floor, uplevel with covered storage
- Cruise control, electronic with set and resume speed - Defogger, rear-window
- Driver Information Center, color display includes trip/fuel information, vehicle information and vehicle messages
- Floor mats, carpeted front- Floor mats, carpeted rear
- Head restraints, 4-way adjustable, up/down, fore/aft, front
- Head restraints, rear, adjustable, folding
- Instrumentation, analog with speedometer, tachometer, engine temperature and fuel gauge with color Driver Information Center
- Keyless Access, passive entry- Keyless start, push button
- Lamp, interior, ambient instrument panel- Lamp, interior, ambient, door
- Lighting, interior with theater dimming, delayed entry/exit, glovebox and trunk
- Map pockets, driver and front passenger seatbacks
- Mirror, inside rearview manual day/night
- Power outlet, auxiliary, 12-volt located forward of console, below the HVAC controls
- Power outlets, 2, auxiliary, 12-volt located on front of console and inside console
- Remote vehicle starter system- Seat adjuster, driver 8-way power
- Seat adjuster, driver power lumbar- Seat adjuster, front passenger 8-way power
- Seat adjuster, front passenger power lumbar- Seat trim, perforated leather-appointed
- Seat, rear 60/40 split-folding- Seats, front bucket
- Seats, heated driver and front passenger- Shift knob, leather-wrapped
- Steering column, manual tilt and telescopic- Steering wheel, 4-spoke leather-wrapped
- Storage, innovative, hidden behind 8" diagonal touch screen with valet-mode lockable, rear armrest, front and rear door panels, reconfigurable console with removable cup holders, dedicated umbrella storage in front door and hidden storage in trunk
- Theft-deterrent system- Trunk opening touch pad
- Trunk release, power located inside on instrument panel left of steering wheel
- Vent, rear console, air- Visors, driver and front passenger illuminated vanity mirrors
- Window, power with driver Express-Up and Down
- Windows, power with Express-Down on all

Mechanical

- Alternator, 150 amps- Axle, 2.77 final drive ratio
- Battery, 70AH, maintenance free with rundown protection, heavy-duty 512 cold-cranking amps
- Brake lining, high-performance, noise and dust performance with FNC rotors
- Brakes, 4-wheel antilock, 4-wheel disc- Chassis equipment, front strut assembly
- Engine, 3.6L DOHC V6 DI with Variable Valve Timing (VVT) (305 hp [227.4 kW] @ 6800 rpm, 264 lb-ft of torque [356.4 N-m] @ 5200 rpm) (Includes E85 FlexFuel capability with (FE9) Federal emissions or (YF5/NE1 and NC7) California emissions with the Federal override only.)
- Exhaust, dual-outlet stainless-steel with bright tips integrated in fascia
- Front wheel drive- Hill Start Assist- Steering, power, variable assist, electric
- Suspension, rear 4-link
- Transmission, 6-speed automatic, electronically-controlled with overdrive

mirrors and steering wheel memory settings, (UG1) Universal Home Remote, (B58) premium carpeted front and rear floor mats, (B36) carpeted trunk mat, (DD8) auto-dimming inside rearview mirror and (DLG) outside heated power-adjustable mirrors with turn signal indicators, ground illumination and driver-side auto-dimming feature

FLOOR MATS, PREMIUM CARPETED FRONT AND REAR

LICENSE PLATE BRACKET, FRONT

\$15

LPO, FRONT AND REAR SPLASH GUARDS

\$180

LPO, TRUNK ORGANIZER

\$140

MIRROR, INSIDE REARVIEW AUTO-DIMMING

MIRRORS, OUTSIDE HEATED POWER-ADJUSTABLE

manual-folding with integrated turn signal indicators, ground illumination, driver-side auto-dimming feature and chrome mirror caps

SEAT, VENTILATED DRIVER

SEAT, VENTILATED PASSENGER, FRONT

STEERING COLUMN, POWER TILT AND TELESCOPIC

STEERING WHEEL, HEATED

SUNROOF, POWER, TILT-SLIDING WITH ADDITIONAL SKYLIGHT FIXED GLASS AFT OF THE SLIDING GLASS

with power sunshade \$1,050

TRUNK MAT, CARPETED

UNIVERSAL HOME REMOTE

includes garage door opener, 3-channel programmable

WIRELESS CHARGING FOR DEVICES

MOSAIC BLACK METALLIC

LTZ PREFERRED EQUIPMENT GROUP

includes Standard Equipment

AUDIO SYSTEM, CHEVROLET MYLINK RADIO WITH NAVIGATION AND 8" DIAGONAL COLOR TOUCH-SCREEN, AM/FM STEREO

with seek-and-scan and digital clock, includes CD player; Bluetooth streaming audio for music and select phones; voice-activated technology for radio and phone; featuring Apple CarPlay capability for compatible phone

\$495

JET BLACK/MOJAVE, PERFORATED LEATHER-APPOINTED SEAT TRIM

SEATS, FRONT BUCKET

TIRES, P245/45R19 ALL-SEASON, BLACKWALL

WHEELS, 19" (48.3 CM) MACHINED-FACE ALUMINUM

Option Packages Total

\$4,845

Little Rock Auto Sales Inc.

Little Rock Auto Sales Inc.

View this car on our website at littlerockautosalesinc.com/6685913

Website: littlerockautosalesinc.com

Phone: [7043941156](tel:7043941156)

Map: [8130 Wilkinson Blvd, Charlotte, NC 28214](#)

