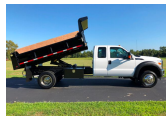


njtrucking.com
609-504-8808
1022 N Evergreen Ave
Woodbury, New Jersey
08096

King of Cars and
Trucks

2015 FORD F550 4X4 V10 EXT CAB 11' MASON DUMP 1- OWNER ONLY 7K MILES

View this car on our website at njtrucking.com/6684501/ebrochure



Our Price **\$44,900**

Specifications:

Year: 2015
VIN: 1FD0X5HY3FEB72565
Make: FORD F550 4X4 V10 EXT
Model/Trim: CAB 11' MASON DUMP 1-OWNER ONLY
7K MILES
Condition: Pre-Owned
Body: Pickup Truck
Exterior: White
Engine: ENGINE: 6.8L 3-VALVE SOHC EFI NA
V10
Interior: Gray
Mileage: 7,658
Drivetrain: 4 Wheel Drive

~VERY LOW MILE EXT CAB 11' MASON DUMP!

WON'T LAST LONG

2015 FORD F550 EXT CAB DRW

11' MASON DUMP BODY (RARE)

4X4 / 6.8L V10

1-OWNER PRIVATELY OWNED USED ON PRIVATE ESTATE

AUTOMATIC TRANSMISSION

(ONLY 7,658 ORIGINAL / ACTUAL MILES)

UPFITTER SWITCHES

ALL POWER OPTIONS

POWER LOCKS WINDOWS DOORS MIRRORS

2 KEY FOBBS

WAREHOUSE KEPT

NON SMOKER

EXCELLENT TIRES

THIS TRUCK IS LIKE NEW STILL!

YOU WILL NOT FIND A NICER USED DUMP ANYWHERE!

WHY SPEND 65K+ NEW WHEN YOU CAN SAVE INSTANT 20K+!

WILL NOT LONG!

\$44,900

CALL / TEXT ROB 856-381-6621 WITH ANY QUESTIONS

Our Location :



2015 FORD F550 4X4 V10 EXT CAB 11' MASON DUMP 1-OWNER ONLY 7K MILES

King of Cars and Trucks - 609-504-8808 - View this car on our website at njtruckking.com/6684501/ebrochure

Installed Options

Interior

- 2 12V DC Power Outlets
- 4-Way Driver Seat -inc: Manual Recline and Fore/Aft Movement
- 4-Way Passenger Seat -inc: Manual Recline and Fore/Aft Movement
- 60-40 Folding Split-Bench Front Facing Fold-Up Cushion Rear Seat - Analog Display
- Day-Night Rearview Mirror- Fade-To-Off Interior Lighting- Front Cupholder
- Front Map Lights- Full Cloth Headliner
- Full Overhead Console w/Storage and 2 12V DC Power Outlets
- Full Vinyl/Rubber Floor Covering
- Gauges -inc: Speedometer, Odometer, Oil Pressure, Engine Coolant Temp, Tachometer, Transmission Fluid Temp, Engine Hour Meter and Trip Odometer
- Glove Box
- HD Vinyl 40/20/40 Split Bench Seat -inc: driver side manual lumbar support, center armrest, cupholder and storage
- HVAC -inc: Underseat Ducts- Instrument Panel Bin and Dashboard Storage
- Interior Trim -inc: Chrome Interior Accents - Manual 1st Row Windows
- Manual Adjustable Front Head Restraints and Fixed Rear Head Restraints
- Manual Air Conditioning- Manual Tilt/Telescoping Steering Column
- Manual Vented Rear Windows- Outside Temp Gauge- Passenger Visor Vanity Mirror
- Systems Monitor- Underhood Lights- Urethane Gear Shift Knob

Exterior

- Aero-Composite Halogen Headlamps- Black Door Handles- Black Fender Flares
- Black Front Bumper w/2 Tow Hooks- Black Grille
- Black Manual Side Mirrors w/Manual Folding
- Black Side Windows Trim and Black Front Windshield Trim - Cab Clearance Lights
- Clearcoat Paint- Fixed Rear Window- Front License Plate Bracket
- Fully Galvanized Steel Panels- Light Tinted Glass
- Manual Extendable Trailer Style Mirrors- Reverse Opening Rear Doors

- Tires: 225/70Rx19.5G BSW AS- Variable Intermittent Wipers
- Wheels: 19.5" Argent Painted Steel -inc: Hub covers/center ornaments not included

Safety

- 2 12V DC Power Outlets
- 4-Way Driver Seat -inc: Manual Recline and Fore/Aft Movement
- 4-Way Passenger Seat -inc: Manual Recline and Fore/Aft Movement
- 60-40 Folding Split-Bench Front Facing Fold-Up Cushion Rear Seat - Analog Display
- Day-Night Rearview Mirror- Fade-To-Off Interior Lighting- Front Cupholder
- Front Map Lights- Full Cloth Headliner
- Full Overhead Console w/Storage and 2 12V DC Power Outlets
- Full Vinyl/Rubber Floor Covering
- Gauges -inc: Speedometer, Odometer, Oil Pressure, Engine Coolant Temp, Tachometer, Transmission Fluid Temp, Engine Hour Meter and Trip Odometer
- Glove Box
- HD Vinyl 40/20/40 Split Bench Seat -inc: driver side manual lumbar support, center armrest, cupholder and storage
- HVAC -inc: Underseat Ducts- Instrument Panel Bin and Dashboard Storage
- Interior Trim -inc: Chrome Interior Accents - Manual 1st Row Windows
- Manual Adjustable Front Head Restraints and Fixed Rear Head Restraints
- Manual Air Conditioning- Manual Tilt/Telescoping Steering Column
- Manual Vented Rear Windows- Outside Temp Gauge- Passenger Visor Vanity Mirror
- Systems Monitor- Underhood Lights- Urethane Gear Shift Knob

Mechanical

- 10694lbs. Maximum Payload- 175 Amp Alternator
- 4-Wheel Disc Brakes w/4-Wheel ABS, Front And Rear Vented Discs - 4.88 Axle Ratio
- 40 Gal. Fuel Tank- 78-Amp/Hr 750CCA Maintenance-Free Battery w/Run Down Protection
- Engine: 6.8L 3-Valve SOHC EFI NA V10- Firm Suspension
- Front And Rear Anti-Roll Bars- Front Suspension w/Coil Springs
- GVWR: 18,000 lbs Payload Package- HD Shock Absorbers
- Hydraulic Power-Assist Steering- Leaf Rear Suspension w/Leaf Springs
- Manual Locking Hubs- Manual Transfer Case- Part-Time Four-Wheel Drive
- Single Stainless Steel Exhaust- Trailer Wiring Harness- Transmission w/Oil Cooler
- Transmission: TorqShift 5-Speed Automatic- Upfitter Switches

Option Packages

Factory Installed Packages

-
ENGINE: 6.8L 3-VALVE SOHC EFI NA V10

King of Cars and Trucks

njtruckking.com

609-504-8808

1022 N Evergreen Ave

Woodbury, New Jersey 08096

© 2019 AutoRevo - All rights reserved. - Powered by AutoRevo