

2016 Nissan Altima 2.5 S

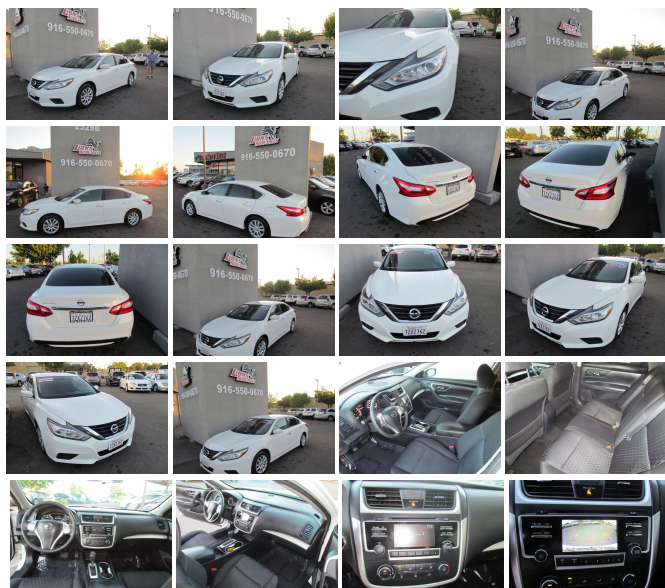
View this car on our website at lionsautosales.net/6681726/ebrochure



Our Price **\$11,450**

Specifications:

Year:	2016
VIN:	1N4AL3AP5GC153349
Make:	Nissan
Stock:	004466424
Model/Trim:	Altima 2.5 S
Condition:	Pre-Owned
Body:	Sedan
Exterior:	White
Engine:	Engine: 2.5L DOHC 16-Valve 4-Cylinder
Interior:	Black Cloth
Mileage:	90,878
Drivetrain:	Front Wheel Drive
Economy:	City 27 / Highway 39



2016 Nissan Altima 2.5 S

Lions Auto Sales - (916) 550-0670 - View this car on our website at lionsautosales.net/6681726/ebrochure

Our Location :



2016 Nissan Altima 2.5 S

Lions Auto Sales - (916) 550-0670 - View this car on our website at lionsautosales.net/6681726/ebrochure

Installed Options

Interior

- 2 12V DC Power Outlets- 2 Seatback Storage Pockets
- 60-40 Folding Bench Front Facing Fold Forward Seatback Rear Seat - Air Filtration
- Analog Display- Cargo Area Concealed Storage- Cargo Space Lights
- Carpet Floor Trim and Carpet Trunk Lid/Rear Cargo Door Trim - Cloth Seat Trim
- Cruise Control w/Steering Wheel Controls- Day-Night Rearview Mirror
- Delayed Accessory Power
- Driver / Passenger And Rear Door Bins and Audio Media Storage
- Driver And Passenger Visor Vanity Mirrors w/Driver And Passenger Illumination
- Driver Foot Rest- Driver Seat- Engine Immobilizer
- FOB Controls -inc: Trunk/Hatch/Tailgate and Windows- Fade-To-Off Interior Lighting
- Front And Rear Map Lights- Front Bucket Seats
- Front Center Armrest w/Storage and Rear Center Armrest- Front Cupholder
- Full Carpet Floor Covering- Full Cloth Headliner
- Full Floor Console w/Covered Storage, Mini Overhead Console w/Storage and 2 12V DC Power Outlets
- Gauges -inc: Speedometer, Odometer, Engine Coolant Temp, Tachometer, Trip Odometer and Trip Computer
- HVAC -inc: Underseat Ducts- Illuminated Locking Glove Box
- Interior Trim -inc: Metal-Look Instrument Panel Insert, Metal-Look Door Panel Insert and Chrome/Metal-Look Interior Accents
- Leatherette Door Trim Insert
- Manual Adjustable Front Head Restraints and Fixed Rear Head Restraints
- Manual Air Conditioning- Manual Tilt/Telescoping Steering Column
- NissanConnect Selective Service Internet Access- Outside Temp Gauge
- Passenger Seat- Perimeter Alarm- Power 1st Row Windows w/Driver 1-Touch Up/Down
- Power Door Locks w/Autolock Feature- Power Rear Windows
- Proximity Key For Doors And Push Button Start - Rear Cupholder
- Remote Keyless Entry w/Integrated Key Transmitter, 2 Door Curb/Courtesy, Illuminated Entry, Illuminated Ignition Switch and Panic Button

- Remote Releases -Inc: Power Cargo Access and Mechanical Fuel
- Seats w/Cloth Back Material- Systems Monitor- Trip Computer
- Urethane Gear Shift Knob- Valet Function

Exterior

- Black Grille w/Chrome Accents- Body-Colored Front Bumper
- Body-Colored Power Side Mirrors- Body-Colored Rear Bumper- Chrome Door Handles
- Chrome Side Windows Trim and Black Front Windshield Trim - Clearcoat Paint
- Compact Spare Tire Mounted Inside Under Cargo- Fixed Rear Window w/Defroster
- Front Windshield -inc: Sun Visor Strip
- Fully Automatic Projector Beam Halogen Headlamps w/Delay-Off
- Galvanized Steel/Aluminum Panels- Light Tinted Glass
- Speed Sensitive Variable Intermittent Wipers- Steel Spare Wheel
- Tires: P215/60TR16 AS- Trunk Rear Cargo Access
- Wheels: 16" x 7.0" Steel w/Full Covers

Safety

- 2 12V DC Power Outlets- 2 Seatback Storage Pockets
- 60-40 Folding Bench Front Facing Fold Forward Seatback Rear Seat - Air Filtration
- Analog Display- Cargo Area Concealed Storage- Cargo Space Lights
- Carpet Floor Trim and Carpet Trunk Lid/Rear Cargo Door Trim - Cloth Seat Trim
- Cruise Control w/Steering Wheel Controls- Day-Night Rearview Mirror
- Delayed Accessory Power
- Driver / Passenger And Rear Door Bins and Audio Media Storage
- Driver And Passenger Visor Vanity Mirrors w/Driver And Passenger Illumination
- Driver Foot Rest- Driver Seat- Engine Immobilizer
- FOB Controls -inc: Trunk/Hatch/Tailgate and Windows- Fade-To-Off Interior Lighting
- Front And Rear Map Lights- Front Bucket Seats
- Front Center Armrest w/Storage and Rear Center Armrest- Front Cupholder
- Full Carpet Floor Covering- Full Cloth Headliner
- Full Floor Console w/Covered Storage, Mini Overhead Console w/Storage and 2 12V DC Power Outlets
- Gauges -inc: Speedometer, Odometer, Engine Coolant Temp, Tachometer, Trip Odometer and Trip Computer
- HVAC -inc: Underseat Ducts- Illuminated Locking Glove Box
- Interior Trim -inc: Metal-Look Instrument Panel Insert, Metal-Look Door Panel Insert and Chrome/Metal-Look Interior Accents
- Leatherette Door Trim Insert
- Manual Adjustable Front Head Restraints and Fixed Rear Head Restraints
- Manual Air Conditioning- Manual Tilt/Telescoping Steering Column
- NissanConnect Selective Service Internet Access- Outside Temp Gauge
- Passenger Seat- Perimeter Alarm- Power 1st Row Windows w/Driver 1-Touch Up/Down
- Power Door Locks w/Autolock Feature- Power Rear Windows
- Proximity Key For Doors And Push Button Start - Rear Cupholder
- Remote Keyless Entry w/Integrated Key Transmitter, 2 Door Curb/Courtesy, Illuminated Entry, Illuminated Ignition Switch and Panic Button
- Remote Releases -Inc: Power Cargo Access and Mechanical Fuel
- Seats w/Cloth Back Material- Systems Monitor- Trip Computer
- Urethane Gear Shift Knob- Valet Function

Mechanical

- 110 Amp Alternator- 18 Gal. Fuel Tank
- 4-Wheel Disc Brakes w/4-Wheel ABS, Front Vented Discs, Brake Assist and Hill Hold Control
- 4.83 Axle Ratio- 550CCA Maintenance-Free Battery w/Run Down Protection
- Electro-Hydraulic Power Assist Speed-Sensing Steering
- Engine: 2.5L DOHC 16-Valve 4-Cylinder- Front And Rear Anti-Roll Bars
- Front-Wheel Drive- Gas-Pressurized Shock Absorbers
- Multi-Link Rear Suspension w/Coil Springs
- Quasi-Dual Stainless Steel Exhaust w/Chrome Tailpipe Finisher
- Strut Front Suspension w/Coil Springs- Transmission w/Driver Selectable Mode
- Transmission: Xtronic CVT (Continuously Variable)

(916) 550-0670
2329 Fulton Ave
Sacramento, CA 95825

© 2019 AutoRevo - All rights reserved. - Powered by AutoRevo