



## 2009 Harley-Davidson® FLSTC - Heritage Softail®

View this vehicle on our website at [northshoreharley-davidson.com](http://northshoreharley-davidson.com)

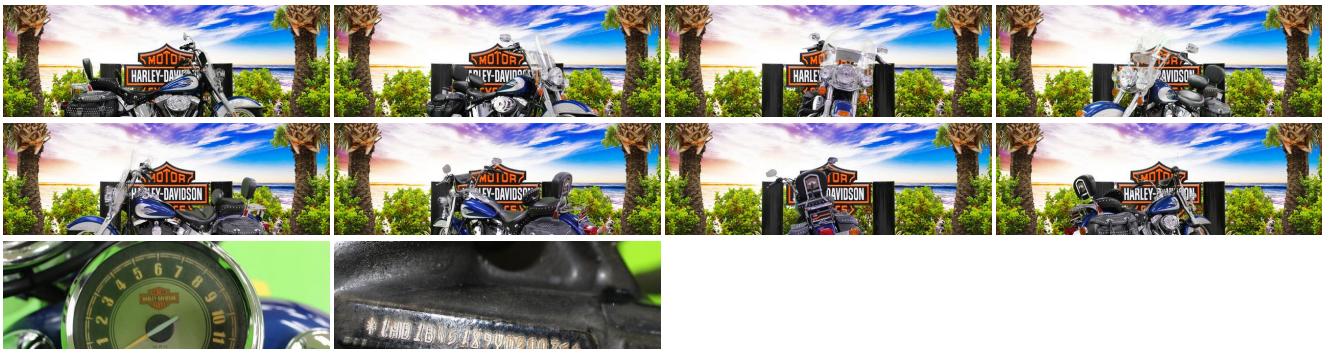
985-641-5100

791 W I-10 Service Rd, Slidell, LA 70458

Photos

Details

Contact



### Specifications:

<b>Year:</b>	2009
<b>VIN:</b>	1HD1BW5189Y020075
<b>Make:</b>	Harley-Davidson®
<b>Stock:</b>	020075U
<b>Model/Trim:</b>	FLSTC - Heritage Softail®
<b>Condition:</b>	Pre-Owned
<b>Engine:</b>	1573 cc V Twin
<b>Exterior:</b>	FLM BLUE/PEWTER
<b>Transmission:</b>	6 Speed Manual

Mileage:

25,551

## Vehicle Description

### 2009 Harley-Davidson® Heritage Softail®

Refreshed FLSTC Heritage Softail® Classic: The Heritage Softail® Classic receives a number of other, more-subtle styling changes and new components that shift this popular model in a new, retro direction for 2009. The beefy FL front end features a front fender and chrome nacelle with clean new styling cues, while taller handlebars change the rider's profile. The fuel tank has new glass-filled, 3-D badges and is topped with a classic "Cat Eye" console and matching retro speedometer face. Half-moon rider footboards and a large, oval foot brake pad also nod to the past. The passenger seat and backrest have been revised for more comfort, while the sissy bar has new trim that matches the new two-tone leather console panel. Both the revised saddle bag and seat trim have been restyled. The King-Size windshield can be quickly detached for more streamlined cruising.

### Installed Options

Mike Bruno's Northshore Harley-Davidson

View this car on our website at [northshoreharley-davidson.com/6681374](http://northshoreharley-davidson.com/6681374)

Website: [northshoreharley-davidson.com](http://northshoreharley-davidson.com)

Phone: 985-641-5100

Map: [791 W I-10 Service Rd, Slidell, LA 70458](#)

