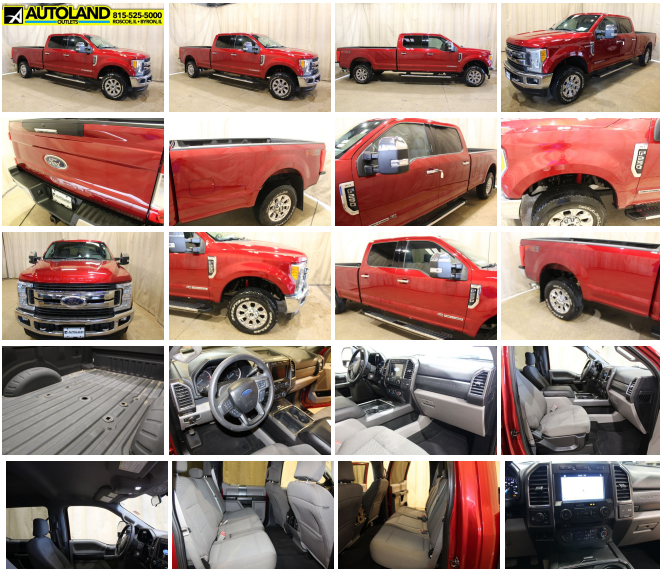


2017 Ford Super Duty F-250 Long bed 4x4 Diesel XLT

View this car on our website at autolandoutlets.com/6680875/ebrochure



Our Price **\$35,546**

Specifications:

Year:	2017
VIN:	1FT7W2BT6HEC43441
Make:	Ford
Stock:	10009
Model/Trim:	Super Duty F-250 Long bed 4x4 Diesel XLT
Condition:	Pre-Owned
Body:	Pickup Truck
Exterior:	Ruby Red Metallic Tinted Clearcoat
Engine:	ENGINE: 6.7L 4V OHV POWER STROKE V8 TURBO DIESEL B20
Interior:	Gray Cloth
Transmission:	TRANSMISSION: TORQSHIFT 6-SPEED AUTOMATIC
Mileage:	124,087
Drivetrain:	4 Wheel Drive

DUE TO HIGH INTERNET SALES AND MULTIPLE LOCATIONS TO BETTER ASSIST OUR CUSTOMERS PLEASE ASK YOUR SALES ASSOCIATE FOR AVAILABILITY!! Just arrived!! Vehicle has been detailed and inspected runs and drives great!!

runs and drives great!!

Autoland Outlets is proud to offer this 2017 Ford F-250 Crew Cab long bed 4x4 diesel options include 3.55 rear ratio,Adjustable brake/gas pedals,Fx4 package,Navi,Snow plow prep package,Remote start,rear camera the list goes on and on call us at 1-815-525-5000

Many of our trucks are Rust Free Southern Units!!! We Buy-Sell-Trade call us for Availability and Pricing 815-525-5000.Dealer Shall in no way be held liable for any errors or omissions to be found on these webpages. All prices are plus any applicable state taxes and service fees. We will do our best to keep all the information current and accurate,however the dealership should be contacted for final pricing and availability. Autoland Outlets is the midwest Premier Truck Store. Over 250 Trucks in Stock!! Over 150 are Diesels! 3/4 Tons, 1 Tons, Regular, Extended and Crew Cabs. Plus: Dump Trucks, Utility Trucks, and much more! Many New Trucks Arriving Daily!!! Thousands of Satisfied Customers! Over 25 Years in Business. Updated Daily 888-240-8674 ILLINOIS WARRANTY MAY APPLY CALL DEALERSHIP FOR DETAILS

2017 Ford Super Duty F-250 Long bed 4x4 Diesel XLT

Autoland Outlets - 877-319-6060 - View this car on our website at autolandoutlets.com/6680875/ebrochure

Our Location :



2017 Ford Super Duty F-250 Long bed 4x4 Diesel XLT

Autoland Outlets - 877-319-6060 - View this car on our website at autolandoutlets.com/6680875/ebrochure

Installed Options

Interior

- 2 Seatback Storage Pockets- 3 12V DC Power Outlets
- 4-Way Driver Seat -inc: Manual Recline and Fore/Aft Movement
- 4-Way Passenger Seat -inc: Manual Recline and Fore/Aft Movement
- 60-40 Folding Split-Bench Front Facing Fold-Up Cushion Rear Seat - Air Filtration
- Analog Display
- Cloth 40/20/40 Split Bench Seat -inc: 20% locking center under-seat storage, center armrest, cupholder, storage, 4-way adjustable driver/passenger headrests and driver's side manual lumbar
- Cruise Control w/Steering Wheel Controls- Day-Night Rearview Mirror
- Delayed Accessory Power- Driver And Passenger Visor Vanity Mirrors
- Fade-To-Off Interior Lighting- Front And Rear Map Lights
- Full Carpet Floor Covering -inc: Carpet Front And Rear Floor Mats - Full Cloth Headliner
- Full Overhead Console w/Storage and 3 12V DC Power Outlets
- Gauges -inc: Speedometer, Odometer, Oil Pressure, Engine Coolant Temp, Tachometer, Transmission Fluid Temp, Engine Hour Meter, Trip Odometer and Trip Computer
- HVAC -inc: Underseat Ducts- Illuminated Locking Glove Box
- Instrument Panel Bin, Covered Dashboard Storage, Driver / Passenger And Rear Door Bins and Locking 2nd Row Underseat Storage
- Interior Trim -inc: Metal-Look Instrument Panel Insert and Chrome Interior Accents
- Manual Adjustable Rear Head Restraints- Manual Air Conditioning
- Manual Tilt/Telescoping Steering Column- Outside Temp Gauge- Perimeter Alarm
- Power 1st Row Windows w/Driver And Passenger 1-Touch Up/Down - Power Door Locks
- Power Rear Windows- Rear Cupholder
- Remote Keyless Entry w/Integrated Key Transmitter, Illuminated Entry and Panic Button
- Securilock Anti-Theft Ignition (pats) Engine Immobilizer- Systems Monitor- Trip Computer
- Underhood And Pickup Cargo Box Lights- Urethane Gear Shift Knob

Exterior

- Aluminum Panels- Black Door Handles- Black Grille w/Chrome Accents

- Black Power Heated Side Mirrors w/Convex Spotter, Manual Folding and Turn Signal Indicator
- Black Side Windows Trim and Black Front Windshield Trim
- Cargo Lamp w/High Mount Stop Light
- Chrome Front Bumper w/Body-Colored Rub Strip/Fascia Accent and 2 Tow Hooks
- Chrome Rear Step Bumper- Clearcoat Paint- Fixed Rear Window
- Front License Plate Bracket- Full-Size Spare Tire Stored Underbody w/Crankdown
- Fully Automatic Aero-Composite Halogen Daytime Running Lights Preference Setting Headlamps w/Delay-Off
- Manual Extendable Trailer Style Mirrors- Perimeter/Approach Lights- Privacy Glass
- Regular Box Style- Steel Spare Wheel- Tailgate Rear Cargo Access
- Tailgate/Rear Door Lock Included w/Power Door Locks- Tires: LT275/65R18E BSW A/S
- Variable Intermittent Wipers
- Wheels: 18" Sparkle Silver Painted Cast Aluminum -inc: bright hub covers/center ornaments

Safety

- 2 Seatback Storage Pockets- 3 12V DC Power Outlets
- 4-Way Driver Seat -inc: Manual Recline and Fore/Aft Movement
- 4-Way Passenger Seat -inc: Manual Recline and Fore/Aft Movement
- 60-40 Folding Split-Bench Front Facing Fold-Up Cushion Rear Seat - Air Filtration
- Analog Display
- Cloth 40/20/40 Split Bench Seat -inc: 20% locking center under-seat storage, center armrest, cupholder, storage, 4-way adjustable driver/passenger headrests and driver's side manual lumbar
- Cruise Control w/Steering Wheel Controls- Day-Night Rearview Mirror
- Delayed Accessory Power- Driver And Passenger Visor Vanity Mirrors
- Fade-To-Off Interior Lighting- Front And Rear Map Lights
- Full Carpet Floor Covering -inc: Carpet Front And Rear Floor Mats - Full Cloth Headliner
- Full Overhead Console w/Storage and 3 12V DC Power Outlets
- Gauges -inc: Speedometer, Odometer, Oil Pressure, Engine Coolant Temp, Tachometer, Transmission Fluid Temp, Engine Hour Meter, Trip Odometer and Trip Computer
- HVAC -inc: Underseat Ducts- Illuminated Locking Glove Box
- Instrument Panel Bin, Covered Dashboard Storage, Driver / Passenger And Rear Door Bins and Locking 2nd Row Underseat Storage
- Interior Trim -inc: Metal-Look Instrument Panel Insert and Chrome Interior Accents
- Manual Adjustable Rear Head Restraints- Manual Air Conditioning
- Manual Tilt/Telescoping Steering Column- Outside Temp Gauge- Perimeter Alarm
- Power 1st Row Windows w/Driver And Passenger 1-Touch Up/Down - Power Door Locks
- Power Rear Windows- Rear Cupholder
- Remote Keyless Entry w/Integrated Key Transmitter, Illuminated Entry and Panic Button
- Securilock Anti-Theft Ignition (pats) Engine Immobilizer- Systems Monitor- Trip Computer
- Underhood And Pickup Cargo Box Lights- Urethane Gear Shift Knob

Mechanical

- 3.73 Axle Ratio- 3230lbs. Maximum Payload
- 4-Wheel Disc Brakes w/4-Wheel ABS, Front And Rear Vented Discs, Brake Assist and Hill Hold Control
- 48 Gal. Fuel Tank- 50-State Emissions System
- 78-Amp/Hr 750CCA Maintenance-Free Battery w/Run Down Protection
- Class V Towing Equipment -inc: Hitch, Brake Controller and Trailer Sway Control
- Engine: 6.2L 2-Valve SOHC EFI NA V8 Flex-Fuel- Firm Suspension- Front Anti-Roll Bar
- Front Suspension w/Coil Springs- GVWR: 10,000 lb Payload Package
- HD Shock Absorbers- Hydraulic Power-Assist Steering
- Leaf Rear Suspension w/Leaf Springs- Manual Locking Hubs- Manual Transfer Case
- Part-Time Four-Wheel Drive- Single Stainless Steel Exhaust- Trailer Wiring Harness
- Transmission w/Oil Cooler- Transmission: TorqShift-G 6-Spd Auto w/SelectShift

Option Packages

Factory Installed Packages

ENGINE: 6.7L 4V OHV POWER STROKE
 V8 TURBO DIESEL B20
 -inc: 4 valve OHV, manual push-button engine-exhaust braking and intelligent oil-life monitor;
 48 Gallon Fuel Tank, 175 Amp Heavy Duty Alternator, 3.31 Axle Ratio, Dual 78-AH 750 CCA Batteries

\$8,795

**TRANSMISSION: TORQSHIFT 6-SPEED
AUTOMATIC**

-inc: (6R140), SelectShift

**4X4 ELECTRONIC-SHIFT-ON-THE-FLY
(ESOF)**

-inc: manual-locking hubs and
auto rotary control on
instrument panel **\$185**

ENGINE BLOCK HEATER
\$90

FX4 OFF-ROAD PACKAGE

-inc: Hill Descent Control, Colored
Front & Rear Rancho Branded
Shocks, Transfer Case & Fuel
Tank Skid Plates, Unique FX4
Off-Road Box Decal **\$295**

**POWERSCOPE TRAILER TOW
MIRRORS W/HEAT**

-inc: power-folding, telescoping,
power glass, turn signal, high
intensity LED security
approach lamps and utility
lighting system (LED side-
mirror spotlights) **\$280**

REAR CHMSL CAMERA

-inc: Display in center stack
screen, LED Center High-
Mounted Stop Lamp (CHMSL)
w/cargo light and rear video
camera, **\$200**

REMOTE START SYSTEM
\$195

SNOW PLOW PREP PACKAGE

-inc: computer selected springs for
snowplow application, NOTE:
Restrictions apply; see
Supplemental Reference or
Body Builders Layout Book for
details **\$85**

TAILGATE STEP & HANDLE
\$375

VOICE-ACTIVATED NAVIGATION

-inc: HD and SiriusXM Traffic and
Travel Link, NOTE: SiriusXM
Traffic and Travel Link includes
a 5-year prepaid subscription,
Services are not available in
Alaska and Hawaii **\$570**

XLT PREMIUM PACKAGE

-inc: 4.2" Center-Stack Screen,
Body-Color Door Handles
w/Chrome Insert, chrome
tailgate handle, Autolock/Auto
Unlock, 6" Angular Chrome
Step Bars, Adjustable Pedals,
SecuriCode Driver's Side
Keyless Entry Keypad,
Reverse Sensing System,
Unique Chrome Mirror Caps,
Wheels: 18" Chrome PVD
Aluminum, Heated Driver &
Passenger Seats, SYNC 3
Communications &
Entertainment System,
enhanced voice recognition, 8"
LCD capacitive touch screen in
center stack w/swipe capability,
pinch-to-zoom capability
included w/available voice-
activated touchscreen
navigation system, AppLink,
911 Assist, Apple CarPlay and
Android Auto and 2 smart
charging USB ports, NOTE:
SYNC AppLink lets you control
some of your favorite
compatible mobile apps w/your
voice. It is compatible w/select
smartphone platforms, **\$3,025**

Commands may vary by phone
and AppLink software,
110V/400W Outlet, 1 in-dash
mounted outlet, 8-Way Power
Driver's Seat, lumbar adjuster
w/manual 2-way passenger
adjuster, Chrome Exhaust Tip,

-
ELECTRONIC-LOCKING W/3.55 AXLE
RATIO

\$390

-
ORDER CODE 603A

-
RUBY RED METALLIC TINTED
CLEARCOAT

\$395

-
DUAL EXTRA HEAVY-DUTY
ALTERNATORS (TOTAL 377-AMPS)

\$115

-
MEDIUM EARTH GRAY, CLOTH
40/CONSOLE/40 FRONT SEATS

-inc: 4-way adjustable
driver/passenger headrests
and driver's side manual
lumbar. Flow-Through
Console, 110V/400W outlet in
rear

\$945

-
Option Packages Total

\$15,940

Autoland Outlets
autolandoutlets.com
877-319-6060
13156 Love Rd
Roscoe, IL 61073

© 2019 AutoRevo - All rights reserved. - Powered by AutoRevo