

2024 Trailex CTE-84180T Aluminum Car Trailer

View this car on our website at trackfocusedmotorsports.com/6679627/ebrochure



Website Price **\$0**

Specifications:

Year:	2024
VIN:	11111111311111124
Make:	Trailex CTE-84180T
Model/Trim:	Aluminum Car Trailer
Condition:	Pre-Owned
Engine:	0 cc
Exterior:	Black
Mileage:	0
Hours:	0

This is a brand new trailer. Trailex Enclosed CTE-84180T is the lightest aluminum enclosed car trailer on the market at 2200lb. The Trailex enclosed aluminum car trailer can be towed by most SUV's, which is one of the reasons it is our best selling trailer! Great for Porsche, Lamborghini, Ferrari, Ford GT, Corvette, BMW, Lotus and almost all other brands. Total height is under 7' total height and will likely fit in your garage. The CTE-84180T comes standard with a large swing side door which allows you to drive your car into the trailer, open your car door fully and step out of your vehicle. No need to crawl out of your window or risk banging your car door against the trailer wall. 11' ramps are included standard. These extra-long ramps allow for the lowest of profile cars to enter the trailer with ease. The aerodynamic front improves fuel economy and two front access doors allow easy access to front tie-downs. LED external lights, dead-bolt locks, and interior lighting are all standard on the Trailex CTE-84180T.

Model : Trailex CTE-84180T with Electric Brakes

Overall Size : 8'6" Width | 6'11" Height

Type : Extruded Aluminum Car Trailer

Ramp Length : 11'

Rear Door Opening : 54" H x 94" W

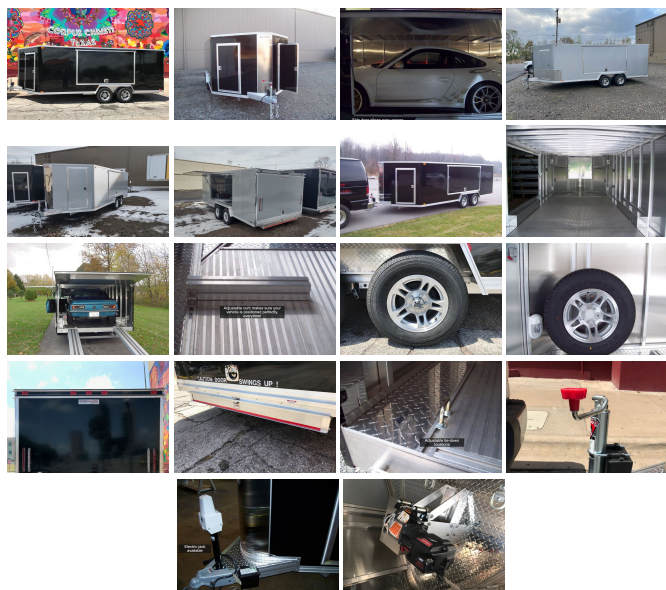
Width Between Fenders: 84"

Drivers Side Awing Door: 46" H x 94" W

Interior Height : 4' 11"

Interior Width : 94" (Wall to Wall)

Options that can be added are tire rack, spare tire, electric winch, remote control, floor box, storage box up front as well as added height from 6", 12" and 18".



Our Location :



Installed Options