



2017 Ram 1500 Laramie

Our Price \$32,500

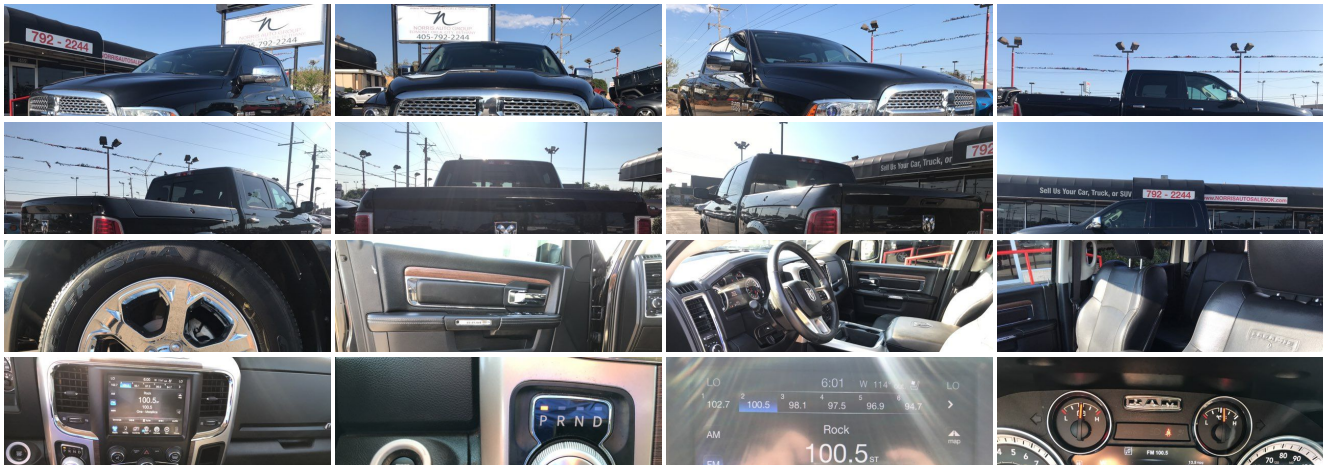
View this vehicle on our website at 76aa366d-d3ae-4915-8f04-cccd1d4c74e.autorevo-websites.com



(405) 792-2244

5959 NW 39th , Oklahoma City, OK 73122

- Photos
- Details
- Contact





Specifications:

Year:	2017
VIN:	1C6RR7NT7HS632493
Make:	Ram
Stock:	A12177
Model/Trim:	1500 Laramie
Condition:	Pre-Owned
Body:	Pickup Truck
Exterior:	Brilliant Black Crystal Pearlcoat
Engine:	ENGINE: 5.7L V8 HEMI MDS VVT
Interior:	Black Leather
Mileage:	41,917
Drivetrain:	4 Wheel Drive
Economy:	City 15 / Highway 21

Vehicle Description

Installed Options

Interior

- Audio Jack Input for Mobile Devices- Electronic Shift
- Full Carpet Floor Covering -inc: Carpet Front And Rear Floor Mats
- Gauges -inc: Speedometer, Odometer, Voltmeter, Oil Pressure, Engine Coolant Temp, Tachometer, Oil Temperature, Transmission Fluid Temp, Engine Hour Meter, Trip Odometer and Trip Computer
- Heated Front Seats- Integrated Voice Command w/Bluetooth
- Leather Trim 40/20/40 Bench Seat
- Power 1st Row Windows w/Driver And Passenger 1-Touch Up/Down
- Power Door Locks w/Autolock Feature- Power Rear Windows
- Remote Keyless Entry w/Integrated Key Transmitter, Illuminated Entry and Panic Button
- Remote USB Port- Trip Computer- Uconnect Access- Ventilated Front Seats
- 115V Auxiliary Power Outlet- 2 Seatback Storage Pockets- 3 12V DC Power Outlets
- 8.4" Touchscreen Display- Analog Display- Cargo Area Concealed Storage- Compass
- Cruise Control w/Steering Wheel Controls- Day-Night Auto-Dimming Rearview Mirror
- Delayed Accessory Power- Door Mirrors, Audio and Pedals
- Driver And Passenger Visor Vanity Mirrors w/Driver And Passenger Illumination
- Driver Seat- Dual Zone Front Automatic Air Conditioning w/Front Infrared
- FOB Controls -inc: Trunk/Hatch/Tailgate- Fade-To-Off Interior Lighting
- Folding Flat Load Floor Storage
- Front Center Armrest w/Storage and Rear Center Armrest- Front Cupholder
- Front Map Lights- Full Cloth Headliner- GPS Antenna Input- Garage Door Transmitter
- HVAC -inc: Underseat Ducts and Console Ducts- Heated Steering Wheel
- High Back Seats- Illuminated Glove Box
- Instrument Panel Bin, Dashboard Storage, Driver / Passenger And Rear Door Bins, 1st Row Underseat Storage and 2nd Row Underseat Storage
- Interior Trim -inc: Deluxe Sound Insulation, Simulated Wood/Metal-Look Instrument Panel Insert, Simulated Wood/Metal-Look Door Panel Insert and Chrome/Metal-Look Interior Accents
- Leather Steering Wheel
- Manual Adjustable Front Head Restraints and Manual Adjustable Rear Head Restraints
- Manual Tilt Steering Column- Mini Overhead Console and 3 12V DC Power Outlets
- Outside Temp Gauge- Passenger Seat- Perimeter Alarm
- Power 10-Way Memory Driver & 6-Way Passenger Seats - Power Adjustable Pedals
- Rear 60/40 Split Folding Seat- Rear Cupholder- Redundant Digital Speedometer
- Sentry Key Engine Immobilizer- Systems Monitor
- Underhood And Pickup Cargo Box Lights- Urethane Gear Shift Knob- Valet Function
- Vinyl Door Trim Insert- Voice Recorder

Option Packages

Factory Installed Packages

ENGINE: 5.7L V8 HEMI MDS VVT -inc: Electronically Controlled Throttle, Heavy Duty Engine Cooling, Next Generation Engine Controller, Dual Rear Exhaust w/Bright Tips, Engine Oil Heat Exchanger, Hemi Badge, Heavy Duty Transmission Oil Cooler	\$1,450
--	---------

Option Packages Total	\$1,450
-----------------------	---------

Exterior

- Chrome Power w/Tilt Down Heated Auto Dimming Side Mirrors w/Power Folding and Turn Signal Indicator
- Full-Size Spare Tire Stored Underbody w/Crankdown
- Tailgate/Rear Door Lock Included w/Power Door Locks- Tires: P275/60R20 BSW AS
- Variable Intermittent Wipers- Wheels: 20" x 9" Chrome Clad Aluminum
- Active Grille Shutters- Black Side Windows Trim and Black Front Windshield Trim
- Body Color Fender Flares- Bright Rotary Shifter- Cargo Lamp w/High Mount Stop Light
- Center Hub- Chrome Door Handles
- Chrome Front Bumper w/Body-Colored Rub Strip/Fascia Accent- Chrome Grille
- Chrome Rear Step Bumper- Clearcoat Paint- Deep Tinted Glass- Front Fog Lamps
- Front License Plate Bracket
- Fully Automatic Projector Beam Halogen Headlamps w/Delay-Off
- Galvanized Steel/Aluminum Panels- LED Brake Lights- Perimeter/Approach Lights
- Power Rear Window- Regular Box Style- Steel Spare Wheel
- Tailgate Rear Cargo Access- Tip Start

Safety

- Audio Jack Input for Mobile Devices- Electronic Shift
- Full Carpet Floor Covering -inc: Carpet Front And Rear Floor Mats
- Gauges -inc: Speedometer, Odometer, Voltmeter, Oil Pressure, Engine Coolant Temp, Tachometer, Oil Temperature, Transmission Fluid Temp, Engine Hour Meter, Trip Odometer and Trip Computer
- Heated Front Seats- Integrated Voice Command w/Bluetooth
- Leather Trim 40/20/40 Bench Seat
- Power 1st Row Windows w/Driver And Passenger 1-Touch Up/Down
- Power Door Locks w/Autolock Feature- Power Rear Windows
- Remote Keyless Entry w/Integrated Key Transmitter, Illuminated Entry and Panic Button
- Remote USB Port- Trip Computer- Uconnect Access- Ventilated Front Seats
- 115V Auxiliary Power Outlet- 2 Seatback Storage Pockets- 3 12V DC Power Outlets
- 8.4" Touchscreen Display- Analog Display- Cargo Area Concealed Storage- Compass
- Cruise Control w/Steering Wheel Controls- Day-Night Auto-Dimming Rearview Mirror
- Delayed Accessory Power- Door Mirrors, Audio and Pedals
- Driver And Passenger Visor Vanity Mirrors w/Driver And Passenger Illumination
- Driver Seat- Dual Zone Front Automatic Air Conditioning w/Front Infrared
- FOB Controls -inc: Trunk/Hatch/Tailgate- Fade-To-Off Interior Lighting
- Folding Flat Load Floor Storage
- Front Center Armrest w/Storage and Rear Center Armrest- Front Cupholder
- Front Map Lights- Full Cloth Headliner- GPS Antenna Input- Garage Door Transmitter
- HVAC -inc: Underseat Ducts and Console Ducts- Heated Steering Wheel
- High Back Seats- Illuminated Glove Box
- Instrument Panel Bin, Dashboard Storage, Driver / Passenger And Rear Door Bins, 1st Row Underseat Storage and 2nd Row Underseat Storage
- Interior Trim -inc: Deluxe Sound Insulation, Simulated Wood/Metal-Look Instrument Panel Insert, Simulated Wood/Metal-Look Door Panel Insert and Chrome/Metal-Look Interior Accents
- Leather Steering Wheel
- Manual Adjustable Front Head Restraints and Manual Adjustable Rear Head Restraints
- Manual Tilt Steering Column- Mini Overhead Console and 3 12V DC Power Outlets
- Outside Temp Gauge- Passenger Seat- Perimeter Alarm
- Power 10-Way Memory Driver & 6-Way Passenger Seats- Power Adjustable Pedals
- Rear 60/40 Split Folding Seat- Rear Cupholder- Redundant Digital Speedometer
- Sentry Key Engine Immobilizer- Systems Monitor
- Underhood And Pickup Cargo Box Lights- Urethane Gear Shift Knob- Valet Function
- Vinyl Door Trim Insert- Voice Recorder

Mechanical

- Engine: 3.6L V6 24V VVT -inc: Flex fuel capable
- Transmission: 8-Speed Automatic (845RE)- 1470lbs. Maximum Payload
- 160 Amp Alternator- 26 Gal. Fuel Tank- 3.21 Rear Axle Ratio
- 4-Wheel Disc Brakes w/4-Wheel ABS, Front Vented Discs, Brake Assist and Hill Hold Control
- 50 State Emissions- 730CCA Maintenance-Free Battery- Auto Locking Hubs
- Class IV Towing Equipment -inc: Hitch and Trailer Sway Control
- Electric Power-Assist Steering- Electronic Transfer Case- Engine Oil Cooler
- Front And Rear Anti-Roll Bars- GVWR: 6,800 lbs- HD Shock Absorbers
- Multi-Link Rear Suspension w/Coil Springs- Part And Full-Time Four-Wheel Drive
- Short And Long Arm Front Suspension w/Coil Springs- Single Stainless Steel Exhaust
- Trailer Wiring Harness- Transmission w/Driver Selectable Mode and HD Oil Cooler

Norris Auto Sales

Norris Auto Sales

View this car on our website at 76aa366d-d3ae-4915-8f04-ccecd1d4c74e.autorevo-websites.com/6677864

Website: 76aa366d-d3ae-4915-8f04-ccecd1d4c74e.autorevo-websites.com

Phone: (405) 792-2244

Map: 5959 NW 39th, Oklahoma City, OK 73122

