



2015 Jeep Patriot High Altitude Edition

Our Price \$11,995

Retail Value \$14,550

View this vehicle on our website at bca87edb-3d4c-4188-98ae-e04830a81c26.autorevo-websites.com

Michael Ray Auto Group

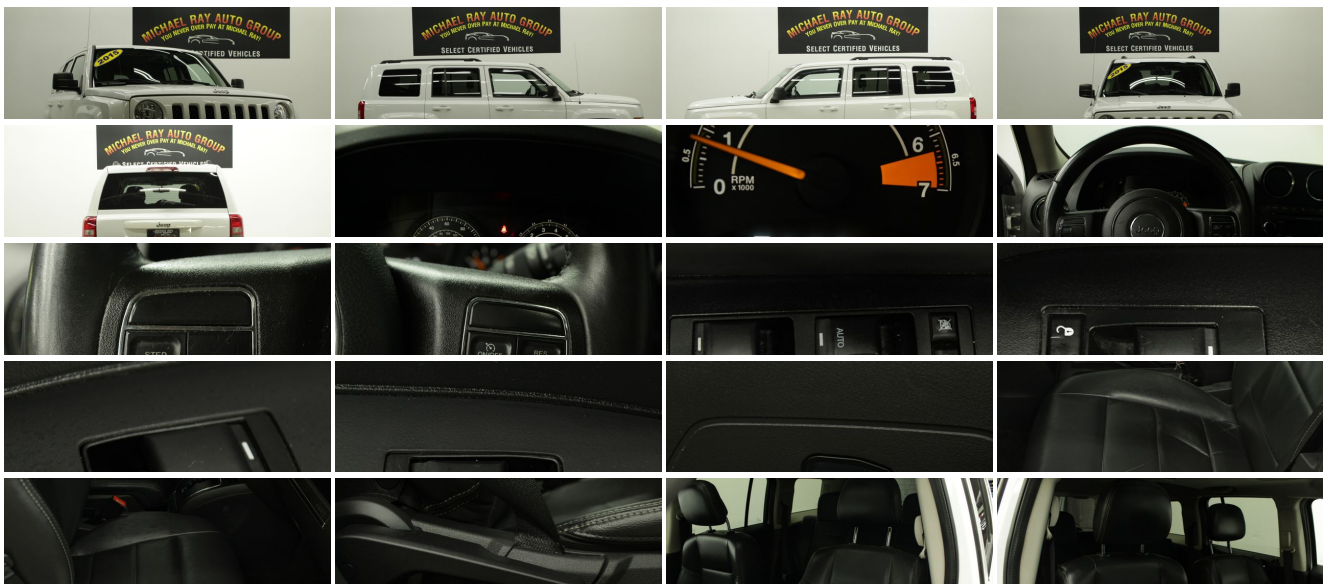
216 - 417 - 7608

14550 Lorain Ave , Cleveland , OH 44111

Photos

Details

Contact



Specifications:

Year:	2015
VIN:	1C4NJRFBXFD155222
Make:	Jeep
Stock:	155222F01
Model/Trim:	Patriot High Altitude Edition
Condition:	Pre-Owned
Body:	SUV
Exterior:	White
Engine:	ENGINE: 2.4L I4 DOHC 16V DUAL VVT
Interior:	-
Mileage:	61,718
Economy:	City 21 / Highway 27

Vehicle Description

Installed Options

Interior

- Full Carpet Floor Covering -inc: Carpet Front And Rear Floor Mats
- Power 1st Row Windows w/Driver 1-Touch Down
- Power Door Locks w/Autolock Feature
- Power Rear Windows and Fixed 3rd Row Windows
- Remote Keyless Entry w/Integrated Key Transmitter, Illuminated Entry and Panic Button
- 1 12V DC Power Outlet- 1 12V DC Power Outlet and 1 AC Power Outlet
- 2-Way Driver Seat -inc: Manual Recline
- 4-Way Passenger Seat -inc: Manual Recline and Fore/Aft Movement
- 60-40 Folding Bench Front Facing Manual Reclining Fold Forward Seatback Rear Seat
- Air Filtration- Analog Display- Cargo Space Lights- Carpet Floor Trim
- Chrome Gear Shift Knob- Cruise Control w/Steering Wheel Controls
- Day-Night Rearview Mirror- Delayed Accessory Power
- Driver And Passenger Heated-Cushion, Driver And Passenger Heated-Seatback
- Driver And Passenger Visor Vanity Mirrors - Driver Foot Rest
- Fade-To-Off Interior Lighting- Front Cupholder- Front Map Lights- Full Cloth Headliner
- Full Floor Console w/Covered Storage, 1 12V DC Power Outlet and 1 AC Power Outlet
- Gauges -inc: Speedometer, Odometer, Engine Coolant Temp, Tachometer and Trip Odometer
- Glove Box- HVAC -inc: Underseat Ducts and Headliner/Pillar Ducts
- Instrument Panel Bin, Driver / Passenger And Rear Door Bins
- Interior Trim -inc: Chrome Instrument Panel Insert and Chrome Interior Accents
- Leather/Metal-Look Steering Wheel- Manual Air Conditioning
- Manual Anti-Whiplash Adjustable Front Head Restraints and Fixed Rear Head Restraints
- Manual Tilt Steering Column- Outside Temp Gauge- Rear Cupholder
- Sentry Key Engine Immobilizer - Sliding Front Center Armrest w/Storage

Exterior

- Tailgate/Rear Door Lock Included w/Power Door Locks
- Aero-Composite Halogen Headlamps- Black Bodyside Cladding
- Black Power Heated Side Mirrors w/Manual Folding
- Black Side Windows Trim and Black Front Windshield Trim
- Body-Colored Door Handles
- Body-Colored Front Bumper w/Black Rub Strip/Fascia Accent- Body-Colored Grille
- Body-Colored Rear Step Bumper w/Black Rub Strip/Fascia Accent- Clearcoat Paint
- Compact Spare Tire Mounted Inside Under Cargo- Deep Tinted Glass
- Fixed Rear Window w/Fixed Interval Wiper and Defroster- Front Fog Lamps
- Fully Galvanized Steel Panels- Liftgate Rear Cargo Access- Roof Rack Rails Only
- Steel Spare Wheel- Tires: P215/60R17 BSW AS Touring- Variable Intermittent Wipers
- Wheels: 17" x 6.5" Mineral Gray Aluminum

Safety

Option Packages

Factory Installed Packages

ENGINE: 2.4L I4 DOHC 16V DUAL VVT

- Full Carpet Floor Covering -inc: Carpet Front And Rear Floor Mats
- Power 1st Row Windows w/Driver 1-Touch Down
- Power Door Locks w/Autolock Feature
- Power Rear Windows and Fixed 3rd Row Windows
- Remote Keyless Entry w/Integrated Key Transmitter, Illuminated Entry and Panic Button
- 1 12V DC Power Outlet- 1 12V DC Power Outlet and 1 AC Power Outlet
- 2-Way Driver Seat -inc: Manual Recline
- 4-Way Passenger Seat -inc: Manual Recline and Fore/Aft Movement
- 60-40 Folding Bench Front Facing Manual Reclining Fold Forward Seatback Rear Seat
- Air Filtration- Analog Display- Cargo Space Lights- Carpet Floor Trim
- Chrome Gear Shift Knob- Cruise Control w/Steering Wheel Controls
- Day-Night Rearview Mirror- Delayed Accessory Power
- Driver And Passenger Heated-Cushion, Driver And Passenger Heated-Seatback
- Driver And Passenger Visor Vanity Mirrors - Driver Foot Rest
- Fade-To-Off Interior Lighting- Front Cupholder- Front Map Lights- Full Cloth Headliner
- Full Floor Console w/Covered Storage, 1 12V DC Power Outlet and 1 AC Power Outlet
- Gauges -inc: Speedometer, Odometer, Engine Coolant Temp, Tachometer and Trip Odometer
- Glove Box- HVAC -inc: Underseat Ducts and Headliner/Pillar Ducts
- Instrument Panel Bin, Driver / Passenger And Rear Door Bins
- Interior Trim -inc: Chrome Instrument Panel Insert and Chrome Interior Accents
- Leather/Metal-Look Steering Wheel- Manual Air Conditioning
- Manual Anti-Whiplash Adjustable Front Head Restraints and Fixed Rear Head Restraints
- Manual Tilt Steering Column- Outside Temp Gauge- Rear Cupholder
- Sentry Key Engine Immobilizer - Sliding Front Center Armrest w/Storage

Mechanical

- Transmission: 6-Speed Automatic -inc: AutoStick Automatic Transmission, Remote Start System, Tip Start
 - 120 Amp Alternator- 13.5 Gal. Fuel Tank- 1300lbs. Maximum Payload
 - 3.367 Axle Ratio
 - 4-Wheel Disc Brakes w/4-Wheel ABS, Front Vented Discs and Brake Assist
 - 50-State Emissions
 - 60-Amp/Hr 525CCA Maintenance-Free Battery w/Run Down Protection
 - Automatic Full-Time Four-Wheel Drive- Electronic Transfer Case
 - Engine: 2.4L I4 DOHC 16V Dual VVT- Front And Rear Anti-Roll Bars- GVWR: 4,575 lbs
 - Gas-Pressurized Shock Absorbers- Hydraulic Power-Assist Steering
 - Multi-Link Rear Suspension w/Coil Springs- Permanent Locking Hubs
 - Single Stainless Steel Exhaust- Strut Front Suspension w/Coil Springs
 - Touring Suspension
-

Michael Ray Auto Group

Michael Ray Auto Group

View this car on our website at bca87edb-3d4c-4188-98ae-e04830a81c26.autorevo-websites.com/6675296

Website: bca87edb-3d4c-4188-98ae-e04830a81c26.autorevo-websites.com

Phone: 216 - 417 - 7608

Map: [14550 Lorain Ave, Cleveland , OH 44111](#)

