



2008 GMC Sierra 1500 SL

Our Price \$6,995

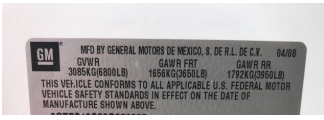
View this vehicle on our website at 76aa366d-d3ae-4915-8f04-cccd1d4c74e.autorevo-websites.com

[\(405\) 792-2244](tel:4057922244)

5959 NW 39th , Oklahoma City, OK 73122

- Photos
- Details
- Contact





Specifications:

| | |
|--------------------|--|
| Year: | 2008 |
| VIN: | 3GTEC13C88G279357 |
| Make: | GMC |
| Stock: | A12013 |
| Model/Trim: | Sierra 1500 SL |
| Condition: | Pre-Owned |
| Body: | Pickup Truck |
| Exterior: | Summit White |
| Engine: | ENGINE, VORTEC 4.8L V8 SFI (295 HP [220.0 KW] @ 5600 RPM, 305 LB-FT TORQUE [411.8 N-M] @ 4800 RPM), IRON BLOCK |
| Interior: | Dark Titanium Cloth |
| Mileage: | 218,952 |
| Drivetrain: | Rear Wheel Drive |
| Economy: | City 14 / Highway 19 |

Vehicle Description

Installed Options

Interior

- Door locks, power
- Remote keyless entry with 2 transmitters, panic button and content theft alarm
- Seat trim, Dark Titanium cloth
- Seats, front 40/20/40 split-bench 3-passenger, driver and front passenger manual reclining with outboard head restraints and center fold-down armrest with storage
- Air conditioning, single-zone manual front climate control
- Assist handle, front passenger (Also includes rear assist handles in the headliner on Extended and Crew Cab models.)
- Coat hooks, rear driver and passenger side
- Cruise control, electronic with set and resume speed located on steering wheel
- Cup holders, front (Also includes rear cupholders on Extended and Crew Cab models.)
- Driver Information Center with odometer, trip odometer and message center (monitors numerous systems depending on vehicle equipment level including low fuel, turn signal "on", transmission temperature and oil change notification) (Driver Information Center controls are operated through the trip button unless (UK3) steering wheel mounted audio controls is ordered.)
- Floor covering, color-keyed carpeting with rubberized vinyl floor mats (Extended and Crew Cab models also include rear floor mats) (May be substituted with (BG9) Graphite-colored rubberized vinyl floor covering.)
- Headliner, Opal Gray-colored cloth with matching retainer moldings
- Instrumentation, analog with speedometer, fuel level, engine temperature, and tachometer
- Lighting, interior with dome and reading lights, illuminated entry feature and backlit instrument panel switches
- Mirror, inside rearview manual day/night
- Power outlets, 2 auxiliary instrument panel-mounted with covers, 12-volt
- Seat adjuster, manual lumbar control on the driver-side
- Seat, rear 60/40 folding bench (folds up), 3-passenger, folding (includes child seat top tether anchor)
- Steering column, Tilt-Wheel, adjustable with brake/transmission shift interlock
- Steering wheel, includes theft-deterrent locking feature
- Visors, driver and front passenger, sliding with clip and passenger side vanity mirror with cover, Opal Gray-colored
- Warning tones, headlamp on, key-in-ignition, driver and passenger buckle up reminder and turn signal on
- Windows, power with driver Express-Down

Exterior

Option Packages

Factory Installed Packages

ENGINE, VORTEC 4.8L V8 SFI (295 HP [220.0 KW] @ 5600 RPM, 305 LB-FT TORQUE [411.8 N-M] @ 4800 RPM), IRON BLOCK

- Headlamps, dual halogen composite with automatic exterior lamp control and flash-to-pass feature
- Air dam, Black- Bumper, front chrome (Includes body-color bumper top caps.)
- Bumper, rear chrome, step-style with pad
- Glass, solar-ray deep-tinted (all windows except light-tinted glass on windshield and driver- and front passenger-side glass) (With Regular Cab models, includes rear window. With Extended Cab models, includes rear and rear quarter windows. With Crew Cab models or (C49) rear-window defogger, includes light-tinted rear window. Included with (PCM) Work Truck Preferred Package.)
- Grille, chrome surround- Lamps, dual cargo area lamps
- Mirrors, outside heated power-adjustable, Black, manual-folding
- Moldings, bodyside, body-colored
- Tire carrier, outside spare, winch-type mounted under frame at rear
- Tires, P245/70R17 all-season, blackwall (Requires 2WD models.)
- Wheel, 17" (43.2 cm) steel spare (spare wheel will not cosmetically match the other 4 wheels)
- Wheels, 4-17" x 7.5" (43.2 cm x 19.1 cm) 6-lug chrome-styled steel includes chrome center caps (spare wheel will not cosmetically match the other 4 wheels)
- Wipers, front intermittent wet-arm with pulse washers

Safety

- Door locks, power
- Remote keyless entry with 2 transmitters, panic button and content theft alarm
- Seat trim, Dark Titanium cloth
- Seats, front 40/20/40 split-bench 3-passenger, driver and front passenger manual reclining with outboard head restraints and center fold-down armrest with storage
- Air conditioning, single-zone manual front climate control
- Assist handle, front passenger (Also includes rear assist handles in the headliner on Extended and Crew Cab models.)
- Coat hooks, rear driver and passenger side
- Cruise control, electronic with set and resume speed located on steering wheel
- Cup holders, front (Also includes rear cupholders on Extended and Crew Cab models.)
- Driver Information Center with odometer, trip odometer and message center (monitors numerous systems depending on vehicle equipment level including low fuel, turn signal "on", transmission temperature and oil change notification) (Driver Information Center controls are operated through the trip button unless (UK3) steering wheel mounted audio controls is ordered.)
- Floor covering, color-keyed carpeting with rubberized vinyl floor mats (Extended and Crew Cab models also include rear floor mats) (May be substituted with (BG9) Graphite-colored rubberized vinyl floor covering.)
- Headliner, Opal Gray-colored cloth with matching retainer moldings
- Instrumentation, analog with speedometer, fuel level, engine temperature, and tachometer
- Lighting, interior with dome and reading lights, illuminated entry feature and backlit instrument panel switches
- Mirror, inside rearview manual day/night
- Power outlets, 2 auxiliary instrument panel-mounted with covers, 12-volt
- Seat adjuster, manual lumbar control on the driver-side
- Seat, rear 60/40 folding bench (folds up), 3-passenger, folding (includes child seat top tether anchor)
- Steering column, Tilt-Wheel, adjustable with brake/transmission shift interlock
- Steering wheel, includes theft-deterrent locking feature
- Visors, driver and front passenger, sliding with clip and passenger side vanity mirror with cover, Opal Gray-colored
- Warning tones, headlamp on, key-in-ignition, driver and passenger buckle up reminder and turn signal on
- Windows, power with driver Express-Down

Mechanical

- Transmission, 4-speed automatic, electronically controlled with overdrive and tow/haul mode
 - Alternator, 145 amps
 - Battery, heavy-duty 600 cold-cranking amps, maintenance-free with rundown protection and retained accessory power
 - Engine, vortec 4.8L V8 SFI (295 hp [220.0 kw] @ 5600 rpm, 305 lb-ft torque [411.8 n-m] @ 4800 rpm), iron block
 - Exhaust, aluminized stainless-steel muffler and tailpipe
 - Frame, fully-boxed, hydroformed front section
 - GVWR, 6800 lbs. (3084 kg) (Requires TC10753 or TC10543 models.)
 - Pickup box, Wideside- Rear wheel drive- Steering, power, rack-and-pinion
 - Suspension, front independent, coil over shock
 - Suspension, rear 2-stage multi-leaf springs, semi-elliptic
 - Tailgate protection, top of tailgate protection cap
 - Tools, mechanical jack and wheel wrench located in back of cab
-

Norris Auto Sales

Norris Auto Sales

View this car on our website at 76aa366d-d3ae-4915-8f04-ccecd1d4c74e.autorevo-websites.com/6673389

Website: 76aa366d-d3ae-4915-8f04-ccecd1d4c74e.autorevo-websites.com

Phone: (405) 792-2244

Map: 5959 NW 39th, Oklahoma City, OK 73122

