



2008 Volkswagen Rabbit S

NO HAGGLE CASH PRICE! \$2,995

Average Retail Price \$4,850

View this vehicle on our website at sterlingmotorsport.com

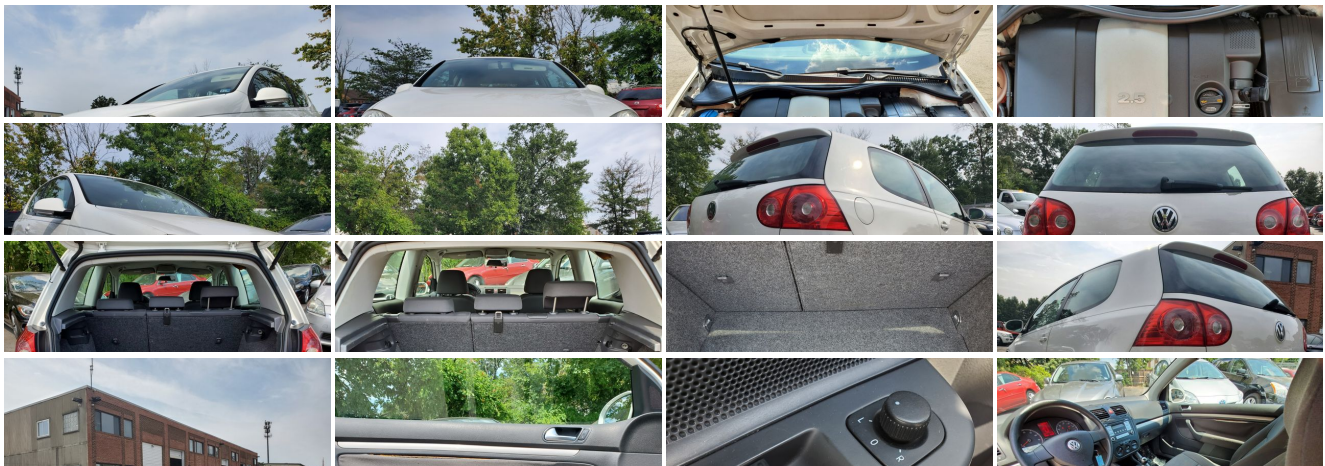
[571-313-1989](tel:571-313-1989)

9 Douglas Court Unit 101, Sterling, VA 20166

Photos

Details

Contact





Specifications:

Year:	2008
VIN:	WVWAA71K48W1Y2904
Make:	Volkswagen
Stock:	1Y2904
Model/Trim:	Rabbit S
Condition:	Pre-Owned
Body:	Coupe
Exterior:	WHITE
Engine:	2.5L DOHC SMPI I5 engine
Interior:	Gray Cloth
Mileage:	91,271
Drivetrain:	Front Wheel Drive
Economy:	City 22 / Highway 29

Vehicle Description

Installed Options

Interior

- Pwr door locks- Remote keyless entry
- Fully reclining manually adjustable cloth front bucket seats w/6-way driver & 4-way passenger seats, easy entry system, adjustable headrests
- 60/40 split folding rear seat w/(3) height-adjustable headrests
- Theft-deterrent, height-adjustable/telescopic steering column
- Tire pressure monitoring system- Automatic pwr windows
- Remote fuel door & hatch releases- Cruise control
- Audible & visible anti-theft vehicle alarm system for doors, hood, hatch, radio, starter
- AM/FM stereo w/CD/MP3 player-inc: aux input jack, (8) speakers - Air conditioning
- Rear window defroster- Aux pwr outlet
- Sun visors w/dual vanity mirrors, driver side sliding
- Passenger side removable storage divider in cargo area
- City 22/hwy 29 (2.5L engine/5-speed manual trans)

Exterior

- Daytime running lights- Body-color heated pwr mirrors w/integrated turn signals
- 2-speed variable intermittent windshield wipers

Safety

- Pwr door locks- Remote keyless entry
- Fully reclining manually adjustable cloth front bucket seats w/6-way driver & 4-way passenger seats, easy entry system, adjustable headrests
- 60/40 split folding rear seat w/(3) height-adjustable headrests
- Theft-deterrent, height-adjustable/telescopic steering column
- Tire pressure monitoring system- Automatic pwr windows
- Remote fuel door & hatch releases- Cruise control
- Audible & visible anti-theft vehicle alarm system for doors, hood, hatch, radio, starter
- AM/FM stereo w/CD/MP3 player-inc: aux input jack, (8) speakers - Air conditioning
- Rear window defroster- Aux pwr outlet
- Sun visors w/dual vanity mirrors, driver side sliding
- Passenger side removable storage divider in cargo area
- City 22/hwy 29 (2.5L engine/5-speed manual trans)

Mechanical

- Anti-slip regulation (ASR)
- 4-wheel anti-lock disc brakes w/electronic brake pressure distribution, hydraulic brake assistant
- 2.5L DOHC SMPI I5 engine - 5-speed manual transmission w/OD- Front wheel drive
- 4-link independent rear suspension- 195/65HR15 all-season tires
- 15" x 6" steel wheels w/full wheel covers - Temporary use spare tire
- Electro-mechanical speed sensitive pwr steering

Price excludes \$699.00 processing fee, registration fees and State and Local sales taxes. 3% surcharge will be added on all CC charges over \$500.00. Deposits are non-refundable. All our sales are based on first-come-first-serve policy. We work very hard to accurately describe our vehicles through text descriptions and elaborate photos. When you purchase a pre-owned vehicle it is not a new vehicle. Any used vehicle can have normal wear and blemishes. Please read the descriptions thoroughly and view all pictures.

Sterling Motorsport

Sterling Motorsport

View this car on our website at sterlingmotorsport.com/6673384

Website: sterlingmotorsport.com

Phone: 571-313-1989

Map: 9 Douglas Court Unit 101, Sterling, VA 20166

