



2003 Mercedes-Benz G500

Dalvin Davis (903) 372-4779

Our Price \$37,899

View this vehicle on our website at redlandcapital.com

Redland Capital

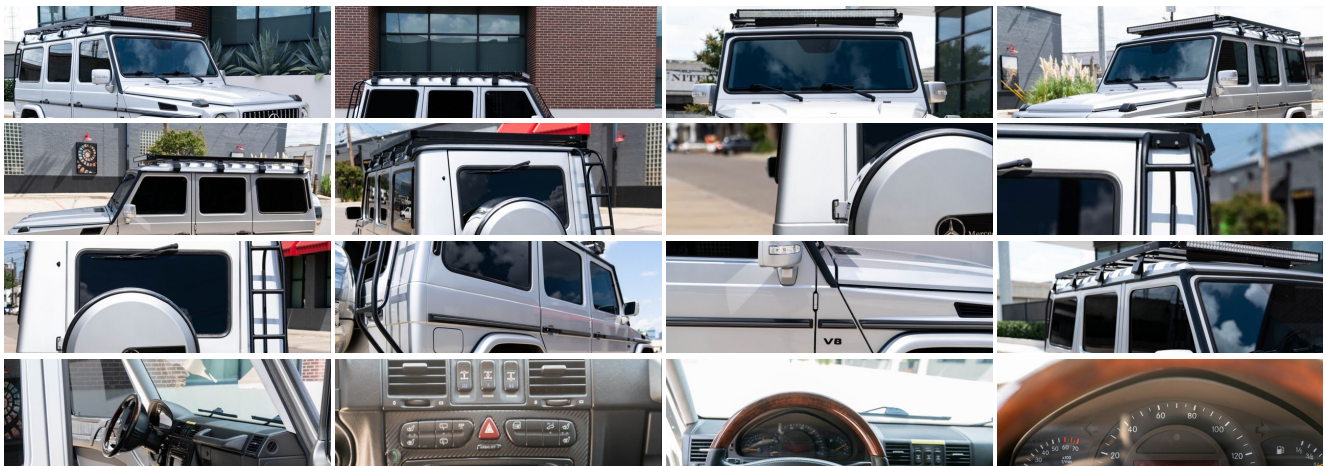
[\(903\) 372-4779](tel:9033724779)

1550 Storey Ln Ste C5, Dallas, TX 75220

Photos

Details

Contact






Specifications:


Year:	2003
VIN:	WDCYR49E53X142493
Make:	Mercedes-Benz
Model/Trim:	G500
Condition:	Pre-Owned
Body:	SUV
Exterior:	Brilliant Silver Metallic
Engine:	5.0L SOHC SMPI 24-valve V8 engine
Interior:	Black Leather
Mileage:	147,300
Drivetrain:	4 Wheel Drive
Economy:	City 13 / Highway 14


Vehicle Description


Vehicle History Report : as Of 07/03/2025



Snapshot


2003 MERCEDES-BENZ G-CLASS G 500



No accidents or damage reported to CARFAX



37 Service history records


5 Previous owners


Types of owners: Corporate
Personal


Last owned in Montana


171,033 Last reported odometer reading



FREE CARFAX Report

See the full CARFAX Report for additional information

*carfax Snapshot is a reflection of available information on the date the report was pulled. carfax is constantly being updated with new information and is subject to change at any time.

Installed Options

Interior

- Burl walnut trim
- COMAND integrated GPS satellite navigation system w/in-dash CD-ROM drive
- (4) map reading lamps
- 10-way pwr adjustable heated leather front bucket seats w/4-way head restraints, 3-position memory
- 4-way pwr adjustable steering column w/memory, easy entry/exit feature
- 60/40 split fold-flat heated rear seat w/(3) height-adjustable head restraints
- AM/FM/weatherband stereo-inc: 6-disc CD changer, (9) speakers
- Automatic anti-theft alarm system w/automatic notification
- Automatic climate control-inc: dual temp controls, dust filter, REST mode
- Carpeted cargo area w/tie-down hooks- Carpeted front/rear floor mats
- Central locking system-inc: selective unlocking, window/sunroof control, infrared remote control
- Cruise control- Electronic analog speedometer, tachometer, and fuel gauge
- HomeLink compatible garage door control
- Leather/walnut trimmed steering wheel & shift knob
- Multifunction display-inc: digital clock, outside temp, gear selection, transfer-case range selection, digital speed readout, engine coolant temperature, odometers, trip computer, Flexible Service System, oil level, audio status, navigational instruction, programmable vehicle settings, reminder/malfunction messaging
- Pwr windows w/one-touch express-down- Rear window defroster
- Remote-operated illuminated entry system- Tele Aid concierge service
- Velour carpet including cargo floor

Exterior

- Aluminum running boards
- Dual heated pwr mirrors-inc: pwr fold-in feature, parking-assist right-side mirror
- Halogen front foglamps- Intermittent rear wiper w/washer
- Privacy glass for rear doors, rear quarters, cargo door
- Programmable daytime running lamps- Rain-sensing intermittent front wipers w/washer
- Single red rear foglamp
- Variable-focus halogen headlamps-inc: driver-selectable light-sensing auto-on feature, clear lenses

Safety

- Burl walnut trim
- COMAND integrated GPS satellite navigation system w/in-dash CD-ROM drive

- (4) map reading lamps
- 10-way pwr adjustable heated leather front bucket seats w/4-way head restraints, 3-position memory
- 4-way pwr adjustable steering column w/memory, easy entry/exit feature
- 60/40 split fold-flat heated rear seat w/(3) height-adjustable head restraints
- AM/FM/weatherband stereo-inc: 6-disc CD changer, (9) speakers
- Automatic anti-theft alarm system w/automatic notification
- Automatic climate control-inc: dual temp controls, dust filter, REST mode
- Carpeted cargo area w/tie-down hooks- Carpeted front/rear floor mats
- Central locking system-inc: selective unlocking, window/sunroof control, infrared remote control
- Cruise control- Electronic analog speedometer, tachometer, and fuel gauge
- HomeLink compatible garage door control
- Leather/walnut trimmed steering wheel & shift knob
- Multifunction display-inc: digital clock, outside temp, gear selection, transfer-case range selection, digital speed readout, engine coolant temperature, odometers, trip computer, Flexible Service System, oil level, audio status, navigational instruction, programmable vehicle settings, reminder/malfunction messaging
- Pwr windows w/one-touch express-down- Rear window defroster
- Remote-operated illuminated entry system- Tele Aid concierge service
- Velour carpet including cargo floor

Mechanical

- 18" x 7.5" 5-spoke alloy wheels - 4 wheel anti-lock braking system (ABS)
- Electronic Stability Program (ESP)
- Full-time 4-wheel drive w/4-wheel Electronic Traction System (4-ETS)
- 2-speed electronic transfer case- 265/60VR18 mud & snow performance tires
- 3.46 axle ratio
- 5-speed automatic transmission-inc: adaptive controls, OD, Touch Shift manual control
- 5.0L SOHC SMPI 24-valve V8 engine
- Brake Assist applies maximum brake force for emergency stop
- Electronic Brake Force Distribution- Front stabilizer bar
- Front/center/rear locking differentials w/dashboard controls
- Pwr 4-wheel front vented/solid rear disc brakes
- Recirculating-ball steering w/power assist, hydraulic damper
- Rigid front/rear axles w/longitudinal & transverse links, coil springs, gas-pressurized shock absorbers

Redland Capital

Redland Capital

View this car on our website at redlandcapital.com/6672146

Website: redlandcapital.com

Phone: (903) 372-4779

Map: [1550 Storey Ln Ste C5, Dallas, TX 75220](#)

