

2019 Ford F-450 DRW King Ranch 4X4 MSRP 82K,PANO ROOF,360 CAM,22K

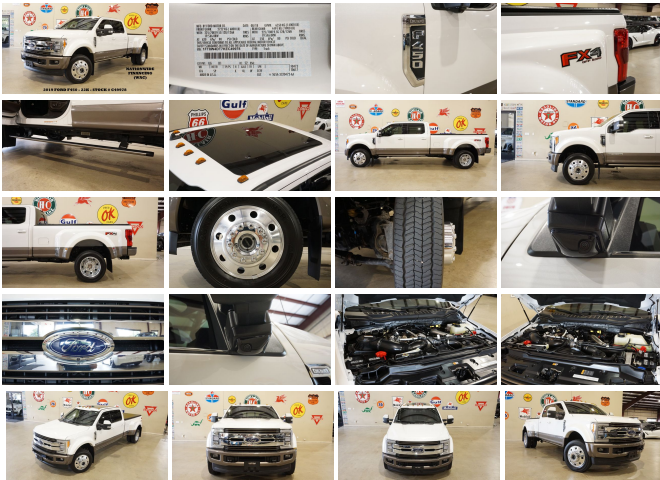
View this car on our website at tveauto.com/6671648/ebrochure



Our Price **\$70,900**

Specifications:

Year:	2019
VIN:	1FT8W4DT7KEC49978
Make:	Ford
Stock:	C49978
Model/Trim:	F-450 DRW King Ranch 4X4 MSRP 82K,PANO ROOF,360 CAM,22K
Condition:	Pre-Owned
Body:	Pickup Truck
Exterior:	White Platinum Metallic Tri-Coat
Engine:	ENGINE: 6.7L 4V OHV POWER STROKE V8 TURBO DIESEL B20
Interior:	Java Leather
Transmission:	TRANSMISSION: TORQSHIFT 6-SPEED AUTOMATIC
Mileage:	22,048
Drivetrain:	4 Wheel Drive



NATION WIDE FINANCING

SUBMIT CREDIT APP WWW.TVEAUTO.COM

OR CALL 972-242-5350

2019 FORD F450 DUALLY KING RANCH CREW-CAB 4X4, 6.7L V8 TURBO DIESEL ENGINE, AUTOMATIC TRANSMISSION, ONLY 22K, WHITE PLATINUM METALLIC W/JAVA LEATHER INTERIOR, CARFAX REPORTS 1 OWNER NO ACCIDENTS, APPEARS TO BE A NON-SMOKER, REMOTE START, FOGLIGHTS, OVERHEAD CAB LIGHTS, TWIN PANEL MOONROOF, NAVIGATION, BACK-UP CAMERA, CARGO CAMERA, 360 VIEW CAMERAS, POWER RETRACTABLE RUNNING BOARDS, POWER



WINDOWS, POWER DOOR LOCKS, POWER FOLDING & TELESCOPING TRAILER TOWING HEATED MIRRORS WITH TURN SIGNALS, BLIND SPOT CONTROL, LANE KEEPING ASSIST, POWER & HEATED TILT/TELESCOPE STEERING WHEEL WITH AUDIO & CRUISE CONTROLS, DUAL POWER HEATED & COOLED FRONT SEATS WITH DRIVER 3 MEMORY POSITION, POWER ADJUSTABLE PEDALS, TRACTION CONTROL, HILL DESCENT CONTROL, TRAILER BRAKE CONTROLLER, UPFITTER SWITCHES, ICE COLD A/C, DUAL CLIMATE CONTROL, BANG & OLUFSEN HD AM/FM/SIRIUS STEREO, MICROSOFT SYNC VOICE ACTIVATED SYSTEM, SELF DIMMING REAR VIEW MIRROR, HOMELINK GARAGE CONTROLS, DUAL LIGHTED VANITY MIRRORS, REAR HEATED SEATS, REAR A/C VENTS, POWER SLIDING REAR WINDOW, BED COVER, BED LINER, TAILGATE STEP, REAR PARK DISTANCE SENSORS, TOW PACKAGE WITH RECEIVER HITCH, FLOOR MATS, OWNER'S MANUAL, 2 KEYS/2 REMOTES, 19.5 IN FORGED POLISHED ALUMINUM WHEELS, FRONT TIRES ARE CONTINENTAL 225/70R/19.5 WITH APPROX 95% TREAD LIFE REMAINING, REAR TIRES ARE CONTINENTAL 225/70R/19.5 WITH APPROX 95% TREAD LIFE REMAINING. RUNS AND DRIVES GREAT. GIVE US A CALL @ 972-242-5350 OR STOP BY FOR A TEST DRIVE. 1724 LUNA RD IN CARROLLTON - 2 MILES NORTH OF 635. CLICK ON CARFAX ICON TO VIEW A FULL REPORT AT NO COST TO YOU.


Vehicle History Report : as Of 11/18/2019



Snapshot

2019 FORD F450 SUPER DUTY

	No accidents reported to CARFAX
	No damage reported to CARFAX
	CARFAX 1-Owner vehicle
	At least 1 open recall
	Regular oil changes
	22,048 Last reported odometer reading

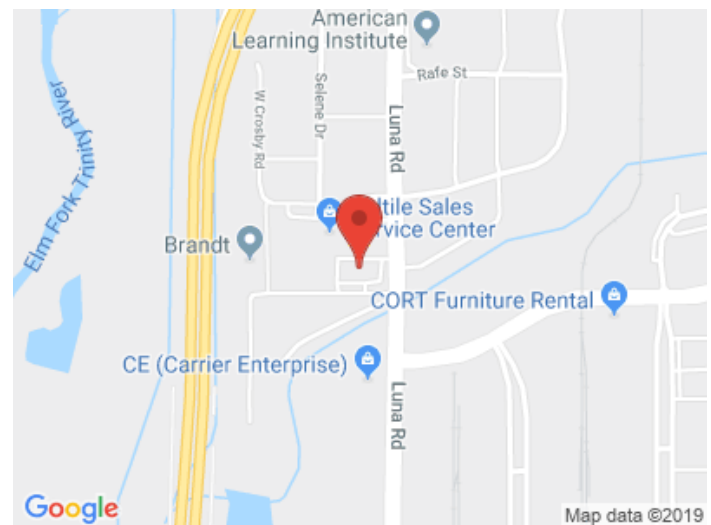


FREE CARFAX Report

See the full CARFAX Report for additional information

*carfax Snapshot is a reflection of available information on the date the report was pulled. carfax is constantly being updated with new information and is subject to change at any time.

Our Location :



2019 Ford F-450 DRW King Ranch 4X4 MSRP 82K,PANO ROOF,360 CAM,22K
Texas Vehicle Exchange - 972-242-5350 - View this car on our website at veauto.com/6671648/ebrochure

Installed Options

Interior

- 110V/400W Outlet -inc: 1 in-dash mounted outlet and 2nd outlet in the console
- 2 Seatback Storage Pockets- 4 12V DC Power Outlets
- 60-40 Folding Split-Bench Front Facing Fold-Up Cushion Rear Seat - Air Filtration
- Cruise Control w/Steering Wheel Controls- Day-Night Auto-Dimming Rearview Mirror
- Delayed Accessory Power- Door Mirrors, Steering Wheel and Pedals
- Driver And Passenger Visor Vanity Mirrors w/Driver And Passenger Illumination
- Driver Seat- Engine Immobilizer
- FOB Controls -inc: Trunk/Hatch/Tailgate and Remote Engine Start
- Fade-To-Off Interior Lighting- Flow-Through Console -inc: 110V/400W outlet in rear
- Front And Rear Map Lights- Front Center Armrest and Rear Center Armrest
- Front Cupholder- Full Carpet Floor Covering -inc: Carpet Front And Rear Floor Mats
- Full Cloth Headliner- Full Overhead Console w/Storage and 4 12V DC Power Outlets
- Garage Door Transmitter
- Gauges -inc: Speedometer, Odometer, Engine Coolant Temp, Tachometer, Turbo/Supercharger Boost, Transmission Fluid Temp, Engine Hour Meter, Trip Odometer and Trip Computer
- HVAC -inc: Underseat Ducts- Heated Leather Steering Wheel w/Auto Tilt-Away
- Illuminated Locking Glove Box
- Instrument Panel Bin, Covered Dashboard Storage, Driver / Passenger And Rear Door Bins
- Integrated Navigation System w/Voice Activation
- Interior Trim -inc: Metal-Look Instrument Panel Insert, Genuine Wood/Chrome Door Panel Insert, Genuine Wood/Leather Console Insert and Chrome/Metal-Look Interior Accents
- Keypad- Leather Door Trim Insert- Manual Adjustable Rear Head Restraints
- Outside Temp Gauge- Passenger Seat- Perimeter Alarm
- Power 1st Row Windows w/Driver And Passenger 1-Touch Up/Down
- Power Adjustable Pedals- Power Door Locks w/Autolock Feature- Power Rear Windows
- Power Tilt/Telescoping Steering Column- Proximity Key For Doors And Push Button Start
- Rear Cupholder

- Remote Keyless Entry w/Integrated Key Transmitter, Illuminated Entry and Panic Button
- Smart Device Remote Engine Start- Systems Monitor- Trip Computer
- Underhood And Pickup Cargo Box Lights
- Unique King Ranch Leather 40/Console/40 Front Seats -inc: Kingsville Antique Affect leather seating surfaces w/matching 60/40 rear bench w/partitioned locking under-seat storage, 12V powerpoint, dual integrated cupholders in armrest, 2 outboard head restraints, 10-way power (includes power lumbar), memory, easy-entry/exit driver's seat and heated/cooled driver and passenger seating
- Urethane Gear Shift Knob- Voice Activated Dual Zone Front w/Steering Wheel Controls

Exterior

- Aluminum Panels- Black Side Windows Trim and Black Front Windshield Trim
- Body-Colored Door Handles- Body-Colored Grille w/Chrome Accents
- Body-Colored Power Heated Side Mirrors w/Convex Spotter, Power Folding and Turn Signal Indicator
- Cab Clearance Lights- Cargo Lamp w/High Mount Stop Light- Clearcoat Paint
- Colored Front Bumper w/2 Tow Hooks- Colored Rear Step Bumper- Deep Tinted Glass
- Front Fog Lamps- Front License Plate Bracket
- Full-Size Spare Tire Stored Underbody w/Crankdown
- Fully Automatic Aero-Composite Halogen Auto High-Beam Daytime Running Lights Preference Setting Headlamps w/Delay-Off
- Illuminated Running Boards- Perimeter/Approach Lights
- Power Extendable Trailer Style Mirrors- Power Rear Window w/Defroster
- Rain Detecting Variable Intermittent Wipers- Regular Box Style- Steel Spare Wheel
- Tailgate Rear Cargo Access- Tailgate/Rear Door Lock Included w/Power Door Locks
- Tires: 225/70Rx19.5G BSW Traction -inc: spare tire
- Wheels: 19.5" Forged Polished Aluminum -inc: 4 aluminum outer and 2 steel inner, light caribou center ornament w/King Ranch logo

Safety

- 110V/400W Outlet -inc: 1 in-dash mounted outlet and 2nd outlet in the console
- 2 Seatback Storage Pockets- 4 12V DC Power Outlets
- 60-40 Folding Split-Bench Front Facing Fold-Up Cushion Rear Seat - Air Filtration
- Cruise Control w/Steering Wheel Controls- Day-Night Auto-Dimming Rearview Mirror
- Delayed Accessory Power- Door Mirrors, Steering Wheel and Pedals
- Driver And Passenger Visor Vanity Mirrors w/Driver And Passenger Illumination
- Driver Seat- Engine Immobilizer
- FOB Controls -inc: Trunk/Hatch/Tailgate and Remote Engine Start
- Fade-To-Off Interior Lighting- Flow-Through Console -inc: 110V/400W outlet in rear
- Front And Rear Map Lights- Front Center Armrest and Rear Center Armrest
- Front Cupholder- Full Carpet Floor Covering -inc: Carpet Front And Rear Floor Mats
- Full Cloth Headliner- Full Overhead Console w/Storage and 4 12V DC Power Outlets
- Garage Door Transmitter
- Gauges -inc: Speedometer, Odometer, Engine Coolant Temp, Tachometer, Turbo/Supercharger Boost, Transmission Fluid Temp, Engine Hour Meter, Trip Odometer and Trip Computer
- HVAC -inc: Underseat Ducts- Heated Leather Steering Wheel w/Auto Tilt-Away
- Illuminated Locking Glove Box
- Instrument Panel Bin, Covered Dashboard Storage, Driver / Passenger And Rear Door Bins
- Integrated Navigation System w/Voice Activation
- Interior Trim -inc: Metal-Look Instrument Panel Insert, Genuine Wood/Chrome Door Panel Insert, Genuine Wood/Leather Console Insert and Chrome/Metal-Look Interior Accents
- Keypad- Leather Door Trim Insert- Manual Adjustable Rear Head Restraints
- Outside Temp Gauge- Passenger Seat- Perimeter Alarm
- Power 1st Row Windows w/Driver And Passenger 1-Touch Up/Down
- Power Adjustable Pedals- Power Door Locks w/Autolock Feature- Power Rear Windows
- Power Tilt/Telescoping Steering Column- Proximity Key For Doors And Push Button Start
- Rear Cupholder
- Remote Keyless Entry w/Integrated Key Transmitter, Illuminated Entry and Panic Button
- Smart Device Remote Engine Start- Systems Monitor- Trip Computer
- Underhood And Pickup Cargo Box Lights
- Unique King Ranch Leather 40/Console/40 Front Seats -inc: Kingsville Antique Affect leather seating surfaces w/matching 60/40 rear bench w/partitioned locking under-seat storage, 12V powerpoint, dual integrated cupholders in armrest, 2 outboard head restraints, 10-way power (includes power lumbar), memory, easy-entry/exit driver's seat and heated/cooled driver and passenger seating
- Urethane Gear Shift Knob- Voice Activated Dual Zone Front w/Steering Wheel Controls

Mechanical

- 4-Wheel Disc Brakes w/4-Wheel ABS, Front And Rear Vented Discs, Brake Assist and Hill Hold Control
- 48 Gal. Fuel Tank- 50-State Emissions System- 5310lbs. Maximum Payload
- 78-Amp/Hr 750CCA Maintenance-Free Battery w/Run Down Protection

- Auto Locking Hubs
- Class V Towing Equipment -inc: Hitch, Brake Controller and Trailer Sway Control
- Dual Rear Wheels- Electronic Transfer Case
- Engine: 6.7L 4V OHV Power Stroke V8 Turbo Diesel B20 -inc: manual push-button engine-exhaust braking and intelligent oil-life monitor
- Firm Suspension- Front And Rear Anti-Roll Bars- Front Suspension w/Coil Springs
- GVWR: 14,000 lb Payload Package- HD 332 Amp Alternator- HD Shock Absorbers
- Hydraulic Power-Assist Steering- Leaf Rear Suspension w/Leaf Springs
- Limited Slip w/4.30 Axle Ratio- Part-Time Four-Wheel Drive
- Single Stainless Steel Exhaust- Trailer Wiring Harness
- Transmission: TorqShift 6-Speed Automatic -inc: (6R140), SelectShift

Option Packages

Factory Installed Packages

ENGINE: 6.7L 4V OHV POWER STROKE
V8 TURBO DIESEL B20
-inc: manual push-button engine-
exhaust braking and intelligent
oil-life monitor

TRANSMISSION: TORQSHIFT 6-SPEED
AUTOMATIC
-inc: (6R140), SelectShift

5TH WHEEL/GOOSENECK HITCH PREP PACKAGE

-inc: 5 pickup bed attachment points w/plugs, 1 frame under-bed cross member and 1 integrated 7-pin connector on driver's side pickup bed wall, 5th wheel hitch compatibility: the 5th Wheel/Gooseneck Prep Package (53W) is compatible w/the factory orderable 5th Wheel Hitch Kits (15K and 15L) and dealer-installed Ford accessories 5th Wheel Hitch Kit by Reese - part #BC3Z-19D520-A (8ft box only). The prep package is also compatible w/Reese Signature Series 5th wheel hitch kits updated w/a new Leg Service Kit - part #BC3Z-A00A25-A (8ft box only). The 5th Wheel Hitch Kit (15K), 5th Wheel Hitch Kit (15L) and dealer-installed Ford accessories 5th Wheel Hitch Kit by Reese - part #BC3Z-19D520-A is not released to the short box (6.75ft box).
NOTE: the short pickup box provides less clearance between the cab and 5th wheel trailer compared to long box pickups. The receiver centerline of the hitch should be mounted at least 2" forward from the rear-axle of the truck chassis,

\$500

CAMPER PACKAGE

-inc: heavy service front springs (1 up upgrade above the spring computer selected as a consequence of options chosen. Not included if maximum springs have been computer selected as standard equipment) and slide-in camper certification. NOTE: Salesperson's Source Book or Ford RV Trailer Towing Guide should be consulted for specific trailer towing or camper limits and corresponding required equipment, axle ratios and model availability. May result in deterioration of ride quality when vehicle is not equipped w/camper

\$160

ENGINE BLOCK HEATER
\$100

FX4 OFF-ROAD PACKAGE

-inc: Hill Descent Control, Off-Road Specially Tuned Shock

\$400

Absorbers, front/rear, Transfer
Case & Fuel Tank Skid Plates,
Unique FX4 Off-Road Box
Decal

HEATED REAR SEATS
\$300

KING RANCH ULTIMATE PACKAGE

-inc: Twin Panel Power Moonroof, map lights and moonroof switches, Blind Spot Information System (BLIS), cross-traffic alert and trailer tow (BLIS sensor in taillamp), Tailgate Step & Handle, Quad Beam LED Headlamps & LED Taillamps, LED fog lamps and LED Center High-Mounted Stop Lamp (CHMSL), Power-Deployable Running Boards, Multi-Contour Seats

\$3,350

TOW TECHNOLOGY BUNDLE

-inc: Ultimate Trailer Tow Camera System, 360 degree camera system and trailer reverse guidance, Display appears in center-stack screen, NOTE: Does not include customer placed trailer camera, Rear CHMSL Camera Display in center stack screen, LED Center High-Mounted Stop Lamp (CHMSL) w/cargo light and rear video camera, Adaptive Steering, Lane-Keeping Alert

\$2,150

UPFITTER SWITCHES (6)

-inc: Located in overhead console

\$165

WHITE PLATINUM METALLIC TRI-COAT
\$595

**JAVA, UNIQUE KING RANCH LEATHER
40/CONSOLE/40 FRONT SEATS**

-inc: Kingsville Antique Affect leather seating surfaces w/matching 60/40 rear bench w/partitioned locking under-seat storage, 12V powerpoint, dual integrated cupholders in armrest, 2 outboard head restraints, 10-way power (includes power lumbar), memory, easy-entry/exit driver's seat and heated/cooled driver and passenger seating

Option Packages Total
\$7,720

Texas Vehicle Exchange

tveauto.com

972-242-5350

1724 Luna Road

Carrollton, TX 75006

© 2019 AutoRevo - All rights reserved. - Powered by AutoRevo