



## 2003 Chevrolet Corvette Z06

**Website Price \$23,995**

View this vehicle on our website at [autoparkdallas.com](http://autoparkdallas.com)



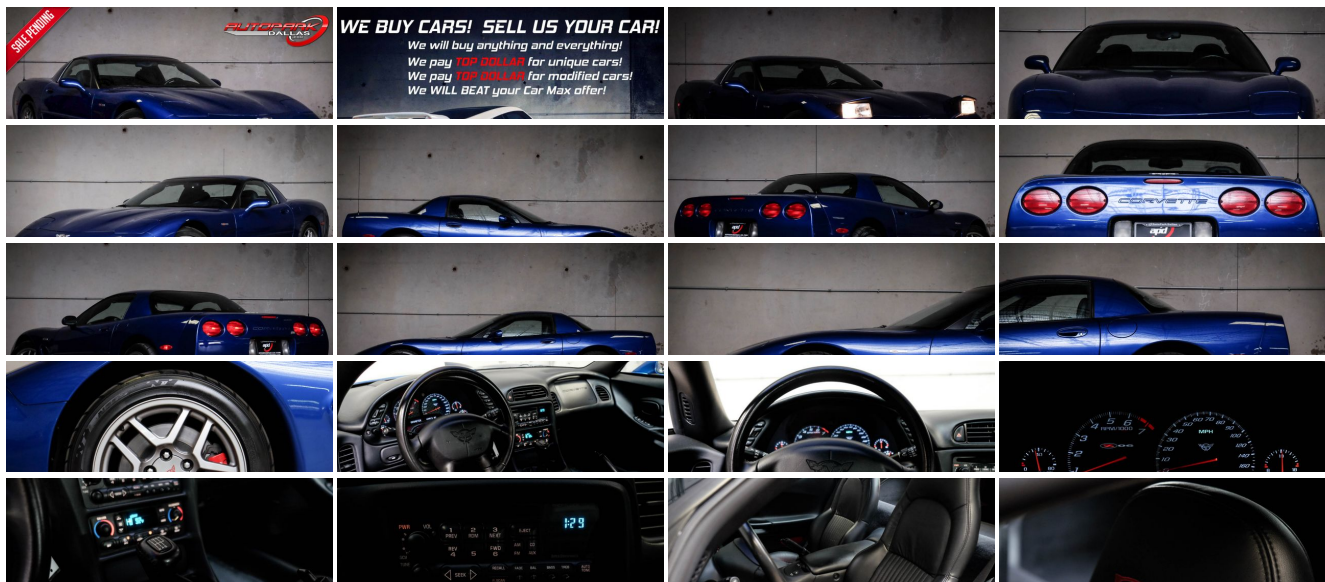
(214) 945-2601

2061 S Stemmons Fwy , Lewisville, TX 75067

Photos

Details

Contact



## Specifications:

Year:	2003
VIN:	<a href="#">1G1YY12S235125632</a>
Make:	Chevrolet
Model/Trim:	Corvette Z06
Condition:	Pre-Owned
Body:	Coupe
Exterior:	Electron Blue Metallic
Engine:	Engine, 5.7L LS6 V8 SFI
Interior:	Black Leather
Transmission:	TRANSMISSION, 6-SPEED MANUAL
Mileage:	43,912
Drivetrain:	Rear Wheel Drive
Economy:	City 19 / Highway 28

## Vehicle Description

AutoPark Dallas is excited to offer you this Garage Kept Low Mileage 2003 Chevrolet Corvette Z06 for sale! Last year of the C5 generation, this Z06 is backed behind redesign and major improvements from its older years. Thanks to the weight reduction in parts and powered by the LS6 Engine, this Z06 was on par if not better than the C4 ZR-1 counterpart. GM didn't hold back with making a powerful coupe that can easily be modified to be track ready with just minor improvements. Come check out this beautiful Corvette parked in our indoor 16,000 Sq Ft Showroom located in Addison, Tx amongst our inventory of 60+ other unique and luxury vehicles!

---

2003 Chevrolet Corvette Z06

**\*2 Previous Owner!\***

**\*Clean CarFax!\***

**\*GARAGE KEPT CONDITION!\***

**\*2 Set of Keys!\***

Electron Blue Metallic Exterior

Black Leather Interior

Comfort Access Keyless Entry

Dual Climate Controls

Driver Seat Memory

Powered Driver Seat

Powered Windows

Bose Premium Audio System

5.7L LS6 V8 SFI Engine

6-Speed Manual Transmission

Rear Wheel Drive

Professionally Detailed!

Well Maintained!

Pristine Inside & Out!

AND SO MUCH MORE!!!

---

**Financing is available!**

Get pre-approved in no time by filling out a credit application on the finance section of our website!

We also offer different extended warranty options!

**SELL US YOUR CAR! WE BUY CARS!**

**\*\*All vehicles are priced for QUICK SALE. All REASONABLE offers will be considered\*\***

AutoPark Dallas is dedicated to offering a level of customer service not usually found in the automobile industry. We take pride in continuing this service long after the vehicle has been delivered. We strive for excellence and make every effort to see that our customer is completely satisfied with every purchase. Referrals and Testimonials is what our business is built on.

Our extensive buying experience guarantees quality, pre-owned and new vehicles hand-picked from factory sources. Our love for the automobile and our dislike of traditional dealership tactics motivate us to provide the service we do!

Pre-purchase inspections are always welcomed! We also offer airport shuttles, amazing finance options, extended warranties and so much more!

We accept trade-ins, will BUY your car (modified or not) even if you don't buy one from us, and offer consignment deals to SELL your vehicle for you! For more information just give us a CALL or TEXT!!

**#214-945-2601**

**Call or Text **Anytime!****

**Se habla Español**

**WE BUY CARS!**

**WWW.AUTOPARKDALLAS.COM**

## Installed Options

### Interior

- Seat adjuster, power, driver 6-way
- Seats, front leather seating surfaces bucket, Z06-specific-inc: dual density seatback, back angle adjustment & 6-way power driver seat
- Sound system, ETR AM/FM stereo w/CD player-inc: seek-&-scan, digital clock, auto-tone control, speed-compensated volume & TheftLock
- Air conditioning, dual-zone, automatic-inc: individual climate settings for driver & right front passenger, automatic climate control & outside temperature display
- Antenna, fixed-mast
- Console, floor, lockable-inc: integral cupholder, ashtray, coin holder, auxiliary power outlet & cassette/CD storage
- Cruise control, electronic w/set & resume speed-inc: telltale in instrument panel cluster
- Defogger, rear-window, electric-inc: front & side window outlets, driver & front passenger
- Floor mats, carpeted
- Head-Up Display-inc: digital readouts for vehicle speed, engine rpm, a performance up-shift guide for the 6-speed manual transmission, & readings from key gauges including water temperature, oil pressure & fuel
- Instrumentation, analog, electronic-inc: Driver Information Center
- Keyless entry, remote-inc: panic button & trunk/hatch release
- Lighting, interior, courtesy, cargo console & glovebox
- Mirror, inside rearview, manual day/night-inc: dual reading lights
- Sound system feature, Bose speaker & amplifier system
- Steering column, Tilt-Wheel-inc: (NK4) Steering wheel, leather-wrapped rim
- Storage-inc: lockable glovebox, center console & 3 rear compartments
- Theft-deterrent alarm system- Theft-deterrent system, PASS-Key II
- Tire sealant & inflator kit- Trunk, rear-inc: remote release
- Visors, illuminated vanity mirrors, driver & front passenger
- Windows, power-inc: driver & passenger express-down

## Option Packages

### Factory Installed Packages

Engine, 5.7L LS6 V8 SFI  
(405 HP [302.1 kW] @ 6000 rpm, 400 lb.-ft.  
[540.0 N-m] @ 4800 rpm)

TRANSMISSION, 6-SPEED MANUAL

EMISSIONS, FEDERAL REQUIREMENTS

EXTRA COST PAINT

\$750

PREFERRED EQUIPMENT GROUP

-inc: base vehicle

SOUND SYSTEM, ETR AM/FM STEREO W/CD PLAYER

-inc: seek-&-scan, digital clock, auto-tone  
control, speed-compensated volume &  
TheftLock

HIGHWEAR NUANCE LEATHER SEAT TRIM

SEATS, FRONT LEATHER SEATING SURFACES BUCKET, Z06-SPECIFIC

-inc: dual density seatback, back angle  
adjustment & 6-way power driver seat

## Exterior

- Daytime running lamps- Fascia, front grille inserts
- Frame, uniframe-inc: corrosion-resistant coating- Glass, Solar-Ray light tinted
- Headlamps, halogen, power-operated retractable- Induction system, outside air
- Mirrors, outside rearview, power, heated, body-color- Paint, basecoat/clearcoat
- Rocker duct, rear, functional rear brake cooling- Roof, fixed- Wipers, intermittent, front

## Safety

- Seat adjuster, power, driver 6-way
- Seats, front leather seating surfaces bucket, Z06-specific-inc: dual density seatback, back angle adjustment & 6-way power driver seat
- Sound system, ETR AM/FM stereo w/CD player-inc: seek-&-scan, digital clock, auto-tone control, speed-compensated volume & TheftLock
- Air conditioning, dual-zone, automatic-inc: individual climate settings for driver & right front passenger, automatic climate control & outside temperature display
- Antenna, fixed-mast
- Console, floor, lockable-inc: integral cupholder, ashtray, coin holder, auxiliary power outlet & cassette/CD storage
- Cruise control, electronic w/set & resume speed-inc: telltale in instrument panel cluster
- Defogger, rear-window, electric-inc: front & side window outlets, driver & front passenger
- Floor mats, carpeted
- Head-Up Display-inc: digital readouts for vehicle speed, engine rpm, a performance up-shift guide for the 6-speed manual transmission, & readings from key gauges including water temperature, oil pressure & fuel
- Instrumentation, analog, electronic-inc: Driver Information Center
- Keyless entry, remote-inc: panic button & trunk/hatch release
- Lighting, interior, courtesy, cargo console & glovebox
- Mirror, inside rearview, manual day/night-inc: dual reading lights
- Sound system feature, Bose speaker & amplifier system
- Steering column, Tilt-Wheel-inc: (NK4) Steering wheel, leather-wrapped rim
- Storage-inc: lockable glovebox, center console & 3 rear compartments
- Theft-deterrent alarm system- Theft-deterrent system, PASS-Key II
- Tire sealant & inflator kit- Trunk, rear-inc: remote release
- Visors, illuminated vanity mirrors, driver & front passenger
- Windows, power-inc: driver & passenger express-down

## Mechanical

- Active handling, improves traction & enhances vehicle stability
- Brakes, 4-wheel antilock, 4-wheel disc- Traction control, all-speed- 18.0 gallon fuel tank
- Axle, 3.42 ratio, limited slip- Engine access, rear opening hood-inc: underhood lamp
- Engine, 5.7L LS6 V8 SFI (405 HP [302.1 kW] @ 6000 rpm, 400 lb.-ft. [540.0 N-m] @ 4800 rpm)
- Exhaust outlets, chrome-plated tips- Exhaust, titanium- Rear wheel drive
- Steering, cooler
- Suspension, 4-wheel independent-inc: transverse fiberglass leaf springs
- Tires, front P265/40ZR17, non-EMT- Tires, rear, P295/35ZR18, non-EMT
- Transmission, 6-speed manual
- Wheels, 5-spoke, Z06-specific aluminum 17" x 9.5" (43.2 cm x 24.1 cm), front & 18" x 10.5" (45.7 cm x 26.7 cm), rear
- Z06 Performance Handling Package-inc: stiffer springs, larger stabilizer bar & shock valving

adjustment & 6-way power driver seat

Option Packages Total

\$750



Auto Park Dallas

View this car on our website at [autoparkdallas.com/6671598](http://autoparkdallas.com/6671598)

Website: [autoparkdallas.com](http://autoparkdallas.com)

Phone: (214) 945-2601

Map: 2061 S Stemmons Fwy, Lewisville, TX 75067

