

2016 Jeep Wrangler Unlimited Sport LIFT/CUSTOM WHEELS AND TIRES

View this car on our website at hoppermotorplex.com/6671117/ebrochure



Our Price **\$32,494**

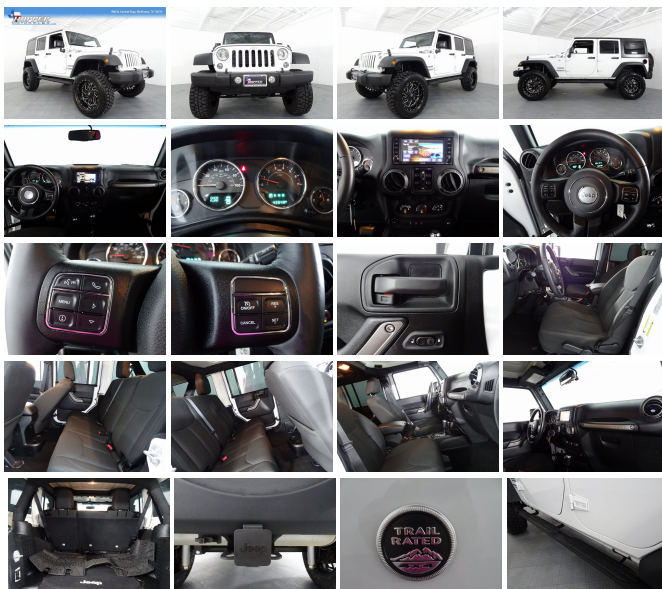
Specifications:

Year:	2016
VIN:	1C4BJWDG9GL302122
Make:	Jeep
Stock:	302122M
Model/Trim:	Wrangler Unlimited Sport LIFT/CUSTOM WHEELS AND TIRES
Condition:	Pre-Owned
Body:	SUV
Exterior:	Bright White Clearcoat
Engine:	ENGINE: 3.6L V6 24V VVT
Interior:	black Cloth
Mileage:	43,931
Drivetrain:	4 Wheel Drive
Economy:	City 16 / Highway 20

Clean Carfax **4" Rough Country Lift*** **20" Fuel Wheels***
35" Hercules M/T Tires **Running Boards*** **Trailer Hitch***
4WD

2016 Jeep Wrangler Unlimited Sport LIFT/CUSTOM WHEELS AND TIRES Bright White Clearcoat LIFT/CUSTOM WHEELS AND TIRES 4D Sport Utility 4WD 5-Speed Automatic 3.6L V6 24V VVT MULTI POINT INSPECTION!!, QUALIFIES FOR VIP!+!.

Our family owned dealership was established in West Texas in 1967. We have been providing customers with quality vehicles for decades with the service to match. With almost four acres of unique inventory, we are sure the Hopper Family will have what you're looking for. Come down and take a look! Our VIP Preferred program provides customers with one year of FREE maintenance (Some Exclusions Apply, ask for details) which includes: -Priority Service -12 months/12,000 miles of oil changes -Tire rotations -Multi-point Inspection -90 Day Powertrain Warranty (Some Exclusions Apply) -A loaner car available with reservation -10% discount on parts and accessories Please check back for more pictures, we're adding new pictures to the website daily.



Vehicle History Report : as Of 09/23/2019

 Snapshot

2016 JEEP WRANGLER UNLIMITED SPORT

	No accidents reported to CARFAX
	No damage reported to CARFAX
	CARFAX 1-Owner vehicle
	Regular oil changes
	Personal lease vehicle
	43,939 Last reported odometer reading



FREE CARFAX Report

See the full CARFAX Report for additional information

*carfax Snapshot is a reflection of available information on the date the report was pulled. carfax is constantly being updated with new information and is subject to change at any time.

Our Location :



2016 Jeep Wrangler Unlimited Sport LIFT/CUSTOM WHEELS AND TIRES

Hopper Motorplex - 214-544-0102 - View this car on our website at hoppermotorplex.com/6671117/ebrochure

Installed Options

Interior

- 6-Way Driver Seat -inc: Manual Recline, Height Adjustment and Fore/Aft Movement
- 4-Way Passenger Seat -inc: Manual Recline and Fore/Aft Movement
- 60-40 Folding Split-Bench Front Facing Fold Forward Seatback Rear Seat
- Manual Tilt Steering Column
- Gauges -inc: Speedometer, Odometer, Engine Coolant Temp, Tachometer, Trip Odometer and Trip Computer
- Manual Rear Windows and Removable 3rd Row Windows- Front Cupholder
- Rear Cupholder- 2 12V DC Power Outlets- Compass
- Cruise Control w/Steering Wheel Controls- Manual Air Conditioning- Locking Glove Box
- Interior Trim -inc: Metal-Look Instrument Panel Insert, Metal-Look Door Panel Insert and Metal-Look Interior Accents
- Urethane Gear Shift Knob- Cloth Seats w/Adjustable Head Restraints
- Driver And Passenger Visor Vanity Mirrors- Day-Night Rearview Mirror
- Full Floor Console w/Locking Storage and 2 12V DC Power Outlets
- Fade-To-Off Interior Lighting
- Full Carpet Floor Covering -inc: Carpet Front And Rear Floor Mats
- Carpet Floor Trim, Carpet And Rubber Mat- Locking Cargo Area Concealed Storage
- Instrument Panel Bin, Dashboard Storage, Driver And Passenger Door Bins
- Delayed Accessory Power- Manual 1st Row Windows- Trip Computer
- Outside Temp Gauge- Analog Display
- Manual Adjustable Front Head Restraints and Fixed Rear Head Restraints
- Front Center Armrest w/Storage- 2 Seatback Storage Pockets
- Sentry Key Engine Immobilizer

Exterior

- Wheels: 16" x 7.0" Luxury Styled Steel- Tires: P225/75R16 BSW On/Off Road
- Steel Spare Wheel- Full-Size Spare Tire Mounted Outside Rear- Clearcoat Paint
- Outside Temp Gauge- Analog Display

- Sunrider Sport Top- Black Front Bumper w/2 Tow Hooks
- Black Rear Bumper w/1 Tow Hook- Black Fender Flares- Black Side Windows Trim
- Black Door Handles- Black Manual Side Mirrors w/Manual Folding
- Removable Rear Window- Variable Intermittent Wipers- Light Tinted Glass
- Fully Galvanized Steel Panels- Convertible w/Fixed Roll-Over Protection
- Body-Colored Grille- Conventional Rear Cargo Access- Manual Tailgate/Rear Door Lock
- Front Fog Lamps- Aero-Composite Halogen Headlamps

Safety

- 6-Way Driver Seat -inc: Manual Recline, Height Adjustment and Fore/Aft Movement
- 4-Way Passenger Seat -inc: Manual Recline and Fore/Aft Movement
- 60-40 Folding Split-Bench Front Facing Fold Forward Seatback Rear Seat
- Manual Tilt Steering Column
- Gauges -inc: Speedometer, Odometer, Engine Coolant Temp, Tachometer, Trip Odometer and Trip Computer
- Manual Rear Windows and Removable 3rd Row Windows- Front Cupholder
- Rear Cupholder- 2 12V DC Power Outlets- Compass
- Cruise Control w/Steering Wheel Controls- Manual Air Conditioning- Locking Glove Box
- Interior Trim -inc: Metal-Look Instrument Panel Insert, Metal-Look Door Panel Insert and Metal-Look Interior Accents
- Urethane Gear Shift Knob- Cloth Seats w/Adjustable Head Restraints
- Driver And Passenger Visor Vanity Mirrors- Day-Night Rearview Mirror
- Full Floor Console w/Locking Storage and 2 12V DC Power Outlets
- Fade-To-Off Interior Lighting
- Full Carpet Floor Covering -inc: Carpet Front And Rear Floor Mats
- Carpet Floor Trim, Carpet And Rubber Mat- Locking Cargo Area Concealed Storage
- Instrument Panel Bin, Dashboard Storage, Driver And Passenger Door Bins
- Delayed Accessory Power- Manual 1st Row Windows- Trip Computer
- Outside Temp Gauge- Analog Display
- Manual Adjustable Front Head Restraints and Fixed Rear Head Restraints
- Front Center Armrest w/Storage- 2 Seatback Storage Pockets
- Sentry Key Engine Immobilizer

Mechanical

- Engine: 3.6L V6 24V VVT- Transmission: 6-Speed Manual (NSG370)
- 3.21 Rear Axle Ratio- Normal Duty Suspension- GVWR: 5,400 lbs- 50 State Emissions
- Manual Transfer Case- Part-Time Four-Wheel Drive- Engine Oil Cooler
- 600CCA Maintenance-Free Battery- 160 Amp Alternator
- Towing Equipment -inc: Trailer Sway Control- 2 Skid Plates- 1000lbs. Maximum Payload
- Front And Rear Anti-Roll Bars- Gas-Pressurized Shock Absorbers
- Hydraulic Power-Assist Steering- 22.5 Gal. Fuel Tank- Single Stainless Steel Exhaust
- Auto Locking Hubs- Leading Link Front Suspension w/Coil Springs
- Trailing Arm Rear Suspension w/Coil Springs
- 4-Wheel Disc Brakes w/4-Wheel ABS, Front And Rear Vented Discs, Brake Assist and Hill Hold Control
- Brake Actuated Limited Slip Differential

Option Packages

Factory Installed Packages

- _____
ENGINE: 3.6L V6 24V VVT

**All payments posted are subject to final approval on up to 72 month 4.9 rate, residualized financing program with \$3000.00 cash down plus tax title license and fees.

