

# 2016 Jeep Wrangler Unlimited Sport LIFT/CUSTOM WHEELS AND TIRES

View this car on our website at [hoppermotorplex.com/6669894/ebrochure](http://hoppermotorplex.com/6669894/ebrochure)

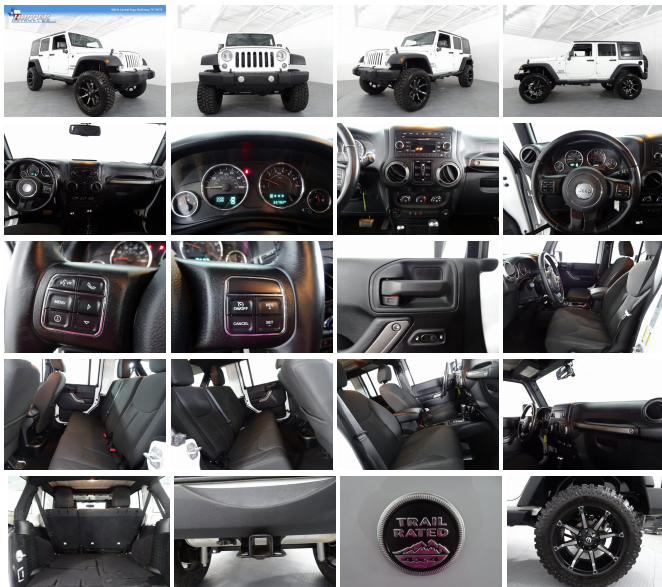


Our Price **\$33,584**

## Specifications:

<b>Year:</b>	2016
<b>VIN:</b>	1C4BJWDG9GL283698
<b>Make:</b>	Jeep
<b>Stock:</b>	83698M
<b>Model/Trim:</b>	Wrangler Unlimited Sport LIFT/CUSTOM WHEELS AND TIRES
<b>Condition:</b>	Pre-Owned
<b>Body:</b>	SUV
<b>Exterior:</b>	Bright White Clearcoat
<b>Engine:</b>	ENGINE: 3.6L V6 24V VVT
<b>Interior:</b>	black Cloth
<b>Mileage:</b>	33,757
<b>Drivetrain:</b>	4 Wheel Drive
<b>Economy:</b>	City 16 / Highway 20

2016 Jeep Wrangler Unlimited Sport LIFT/CUSTOM WHEELS AND TIRES Bright White Clearcoat LIFT/CUSTOM WHEELS AND TIRES 4D Sport Utility 4WD 5-Speed Automatic 3.6L V6 24V VVT MULTI POINT INSPECTION!!, QUALIFIES FOR VIP!+!.



2016 Jeep Wrangler Unlimited Sport LIFT/CUSTOM WHEELS AND TIRES






Hopper Motorplex - 214-544-0102 - View this car on our website at [hoppermotorplex.com/6669894/ebrochure](http://hoppermotorplex.com/6669894/ebrochure)

## Vehicle History Report : as Of 09/22/2019



### Snapshot

2016 JEEP WRANGLER UNLIMITED SPORT

	No accidents reported to CARFAX
	No damage reported to CARFAX
	CARFAX 1-Owner vehicle
	8 Service history records
	Personal lease vehicle
	33,757 Last reported odometer reading



**FREE CARFAX Report**

See the full CARFAX Report for additional information

\*carfax Snapshot is a reflection of available information on the date the report was pulled. carfax is constantly being updated with new information and is subject to change at any time.

## Our Location :



## 2016 Jeep Wrangler Unlimited Sport LIFT/CUSTOM WHEELS AND TIRES

Hopper Motorplex - 214-544-0102 - View this car on our website at [hoppermotorplex.com/6669894/ebrochure](http://hoppermotorplex.com/6669894/ebrochure)

## Installed Options

### Interior

- 6-Way Driver Seat -inc: Manual Recline, Height Adjustment and Fore/Aft Movement
- 4-Way Passenger Seat -inc: Manual Recline and Fore/Aft Movement
- 60-40 Folding Split-Bench Front Facing Fold Forward Seatback Rear Seat
- Manual Tilt Steering Column
- Gauges -inc: Speedometer, Odometer, Engine Coolant Temp, Tachometer, Trip Odometer and Trip Computer
- Manual Rear Windows and Removable 3rd Row Windows- Front Cupholder
- Rear Cupholder- 2 12V DC Power Outlets- Compass
- Cruise Control w/Steering Wheel Controls- Manual Air Conditioning- Locking Glove Box
- Interior Trim -inc: Metal-Look Instrument Panel Insert, Metal-Look Door Panel Insert and Metal-Look Interior Accents
- Urethane Gear Shift Knob- Cloth Seats w/Adjustable Head Restraints
- Driver And Passenger Visor Vanity Mirrors- Day-Night Rearview Mirror
- Full Floor Console w/Locking Storage and 2 12V DC Power Outlets
- Fade-To-Off Interior Lighting
- Full Carpet Floor Covering -inc: Carpet Front And Rear Floor Mats
- Carpet Floor Trim, Carpet And Rubber Mat- Locking Cargo Area Concealed Storage
- Instrument Panel Bin, Dashboard Storage, Driver And Passenger Door Bins
- Delayed Accessory Power- Manual 1st Row Windows- Trip Computer
- Outside Temp Gauge- Analog Display
- Manual Adjustable Front Head Restraints and Fixed Rear Head Restraints
- Front Center Armrest w/Storage- 2 Seatback Storage Pockets
- Sentry Key Engine Immobilizer

### Exterior

- Wheels: 16" x 7.0" Luxury Styled Steel- Tires: P225/75R16 BSW On/Off Road
- Steel Spare Wheel- Full-Size Spare Tire Mounted Outside Rear- Clearcoat Paint
- Outside Temp Gauge- Analog Display

- Sunrider Sport Top- Black Front Bumper w/2 Tow Hooks
- Black Rear Bumper w/1 Tow Hook- Black Fender Flares- Black Side Windows Trim
- Black Door Handles- Black Manual Side Mirrors w/Manual Folding
- Removable Rear Window- Variable Intermittent Wipers- Light Tinted Glass
- Fully Galvanized Steel Panels- Convertible w/Fixed Roll-Over Protection
- Body-Colored Grille- Conventional Rear Cargo Access- Manual Tailgate/Rear Door Lock
- Front Fog Lamps- Aero-Composite Halogen Headlamps

## Safety

- 6-Way Driver Seat -inc: Manual Recline, Height Adjustment and Fore/Aft Movement
- 4-Way Passenger Seat -inc: Manual Recline and Fore/Aft Movement
- 60-40 Folding Split-Bench Front Facing Fold Forward Seatback Rear Seat
- Manual Tilt Steering Column
- Gauges -inc: Speedometer, Odometer, Engine Coolant Temp, Tachometer, Trip Odometer and Trip Computer
- Manual Rear Windows and Removable 3rd Row Windows- Front Cupholder
- Rear Cupholder- 2 12V DC Power Outlets- Compass
- Cruise Control w/Steering Wheel Controls- Manual Air Conditioning- Locking Glove Box
- Interior Trim -inc: Metal-Look Instrument Panel Insert, Metal-Look Door Panel Insert and Metal-Look Interior Accents
- Urethane Gear Shift Knob- Cloth Seats w/Adjustable Head Restraints
- Driver And Passenger Visor Vanity Mirrors- Day-Night Rearview Mirror
- Full Floor Console w/Locking Storage and 2 12V DC Power Outlets
- Fade-To-Off Interior Lighting
- Full Carpet Floor Covering -inc: Carpet Front And Rear Floor Mats
- Carpet Floor Trim, Carpet And Rubber Mat- Locking Cargo Area Concealed Storage
- Instrument Panel Bin, Dashboard Storage, Driver And Passenger Door Bins
- Delayed Accessory Power- Manual 1st Row Windows- Trip Computer
- Outside Temp Gauge- Analog Display
- Manual Adjustable Front Head Restraints and Fixed Rear Head Restraints
- Front Center Armrest w/Storage- 2 Seatback Storage Pockets
- Sentry Key Engine Immobilizer

## Mechanical

- Engine: 3.6L V6 24V VVT- Transmission: 6-Speed Manual (NSG370)
- 3.21 Rear Axle Ratio- Normal Duty Suspension- GVWR: 5,400 lbs- 50 State Emissions
- Manual Transfer Case- Part-Time Four-Wheel Drive- Engine Oil Cooler
- 600CCA Maintenance-Free Battery- 160 Amp Alternator
- Towing Equipment -inc: Trailer Sway Control- 2 Skid Plates- 1000lbs. Maximum Payload
- Front And Rear Anti-Roll Bars- Gas-Pressurized Shock Absorbers
- Hydraulic Power-Assist Steering- 22.5 Gal. Fuel Tank- Single Stainless Steel Exhaust
- Auto Locking Hubs- Leading Link Front Suspension w/Coil Springs
- Trailing Arm Rear Suspension w/Coil Springs
- 4-Wheel Disc Brakes w/4-Wheel ABS, Front And Rear Vented Discs, Brake Assist and Hill Hold Control
- Brake Actuated Limited Slip Differential

## Option Packages

### Factory Installed Packages

- \_\_\_\_\_  
ENGINE: 3.6L V6 24V VVT

\*\*All payments posted are subject to final approval on up to 72 month 4.9 rate, residualized financing program with \$3000.00 cash down plus tax title license and fees.

