

2015 Land Rover Range Rover Evoque Prestige

Call 901-368-5505 for more information or to schedule a test drive. 901-368-5505

View this car on our website at mtmoriahautos.com/6669769/ebrochure



Our Price **\$24,783**

Specifications:

Year:	2015
VIN:	SALVV2BG3FH075338
Make:	Land Rover
Stock:	HO39784
Model/Trim:	Range Rover Evoque Prestige
Condition:	Pre-Owned
Body:	SUV
Exterior:	White
Engine:	Engine: 2.0L I4
Interior:	Leather
Transmission:	AUTOMATIC
Mileage:	80,112
Drivetrain:	4 Wheel Drive
Economy:	City 21 / Highway 30

ADAPTIVE CRUISE CONTROL, ALLOY WHEELS, AUDIO PACKAGE, BACKUP CAMERA, BLUETOOTH, LEATHER SEATS, LUXURY PACKAGE, MEMORY PACKAGE, NAVIGATION SYSTEM GPS NAV, SUNROOF / MOONROOF, TECHNOLOGY PACKAGE, 17 Speakers, AM/FM radio: SIRIUS, CD player, MP3 decoder, Navigation System. Recent Arrival! CARFAX One-Owner. 21/30 City/Highway MPG

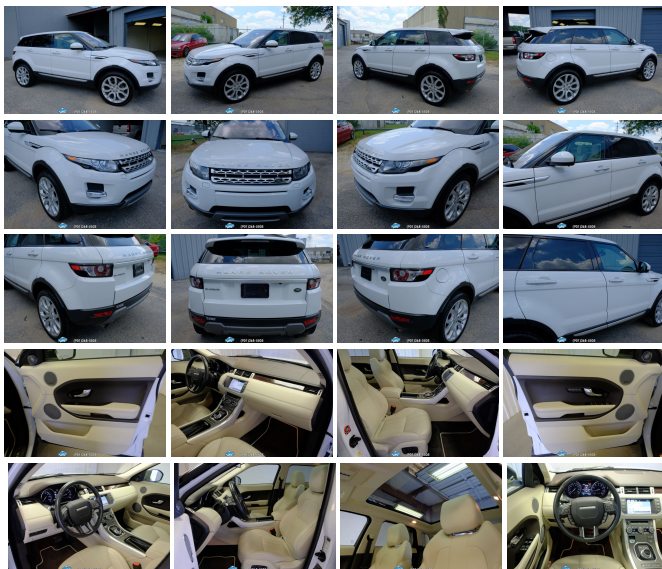
For information or to schedule a test drive call 901-368-5505.

Reviews:

* The Range Rover Evoque luxury SUV appeals to those seeking a sense of timeless British style in a vehicle designed to be compatible with the realities of 21st-century driving. A capable off-road adventurer offering 30 mpg on the highway is a first for Land Rover. Source: KBB.com

* Fashion-forward styling; plenty of standard features; compact dimensions enhance maneuverability; impressive fuel economy; available two-door body style. Source: Edmunds

* With its sporty, dynamic profile Range Rover Evoque creates a new class it can call its own. Available in two distinct body styles, Evoque and Evoque Coupe, it optimizes performance and capability in all on and off-road conditions. The cabin features fine leathers, authentic metal and real wood finishes, and innovative recycled materials. Evoque introduces the Sports Command Driving Position which offers a new take on the feeling of control and command. The centerpiece of the vehicle and the hub for controls, navigation, and infotainment is the 8-



inch color touch-screen in the center of the fascia. There is a choice of the 380W Meridian Sound System that features 12 channels and 11 loudspeakers including a dual-channel subwoofer. Alternatively, the Meridian Surround Sound System produces an incredible 825W through 15 channels and 17 loudspeakers including a subwoofer. Available technology features include park assist, a surround camera system, tow assist, blind spot monitoring, and a rear parking aid. The engine is a 240hp nine-speed 2.0L turbocharged featuring direct-injection for improved response and economy. Cutting-edge technologies include: Terrain Response, which adapts the engine, transmission and electronic systems to maximize drivability, comfort and traction. Hill Descent Control assists with controlled descents, Gradient Release Control is designed to prevent the vehicle running away on steep inclines, and Hill Start Assist is designed to prevent roll back after a hill start. There is also Dynamic Stability Control, designed to correct over and under-steer, and Roll Stability Control detects critical levels of roll and applies braking to reduce the likelihood of a rollover. Source: The Manufacturer Summary

2015 Land Rover Range Rover Evoque Prestige

Mt Moriah Auto Sales - 901-368-5505 - View this car on our website at mtmoriahautos.com/6669769/ebrochure

Vehicle History Report : as Of 09/15/2019

Snapshot

2015 LAND ROVER RANGE RVR EVOQUE PRE PREM

	Accident reported
	CARFAX 1-Owner vehicle
	12 Service history records
	Last owned in Arkansas
	24 Detailed records available
	80,328 Last reported odometer reading

FREE CARFAX Report

See the full CARFAX Report for additional information

*carfax Snapshot is a reflection of available information on the date the report was pulled. carfax is constantly being updated with new information and is subject to change at any time.

Our Location :

2015 Land Rover Range Rover Evoque Prestige

Mt Moriah Auto Sales - 901-368-5505 - View this car on our website at mtmoriahautos.com/6669769/ebrochure

Installed Options

Interior

- Heated & Cooled Front Bucket Seats -inc: 10/8 way power front seats, electric driver's and passenger's adjustment and memory
- Driver Seat- Passenger Seat
- 60-40 Folding Bench Front Facing Heated Fold Forward Seatback Rear Seat
- Manual Tilt/Telescoping Steering Column

- Gauges -inc: Speedometer, Odometer, Engine Coolant Temp, Tachometer, Trip Odometer and Trip Computer
- Power Rear Windows- Heated Leather Steering Wheel- Front Cupholder
- Rear Cupholder- Front Cigar Lighter(s)- Proximity Key For Doors And Push Button Start
- Valet Function- Power Fuel Flap Locking Type
- Remote Keyless Entry w/Integrated Key Transmitter, Illuminated Entry and Panic Button
- Remote Releases -Inc: Power Cargo Access- HomeLink Garage Door Transmitter
- Cruise Control w/Steering Wheel Controls- Dual Zone Front Automatic Air Conditioning
- HVAC -inc: Underseat Ducts, Residual Heat Recirculation and Console Ducts
- Illuminated Glove Box- Driver Foot Rest- Full Cloth Headliner
- Aluminum Gear Shift Knob
- Interior Trim -inc: Genuine Wood Instrument Panel Insert, Aluminum Console Insert and Aluminum Interior Accents
- Premium Oxford Leather Seat Trim -inc: twin needle stitching on seats, fascia panel, door tops and center console lid
- Day-Night Auto-Dimming Rearview Mirror
- Driver And Passenger Visor Vanity Mirrors w/Driver And Passenger Illumination
- Full Floor Console w/Covered Storage and 3 12V DC Power Outlets
- Front And Rear Map Lights- Fade-To-Off Interior Lighting
- Full Carpet Floor Covering -inc: Carpet Front And Rear Floor Mats - Carpet Floor Trim
- Trunk/Hatch Auto-Latch- Rigid Cargo Cover- Cargo Space Lights
- FOB Controls -inc: Trunk/Hatch/Tailgate and Windows
- Memory Settings -inc: Driver Seat and Door Mirrors
- Driver / Passenger And Rear Door Bins - Delayed Accessory Power
- Power Door Locks w/Autolock Feature
- Power 1st Row Windows w/Front And Rear 1-Touch Up/Down - Systems Monitor
- Redundant Digital Speedometer- Trip Computer- Outside Temp Gauge
- Digital/Analog Display
- Manual Adjustable Front Head Restraints and Manual Adjustable Rear Head Restraints
- Sliding Front Center Armrest and Rear Center Armrest w/Storage
- 2 Seatback Storage Pockets- Lumbar- Perimeter Alarm- Engine Immobilizer
- 3 12V DC Power Outlets- Air Filtration

Exterior

- Wheels: 19" Unique Alloy- Tires: 19"- Wheels w/Silver Accents- Steel Spare Wheel
- Compact Spare Tire Mounted Inside Under Cargo - Clearcoat Paint
- Fixed Glass 1st And 2nd Row Sunroof w/Power Sunshade
- Body-Colored Front Bumper w/Colored Rub Strip/Fascia Accent and Metal-Look Bumper Insert
- Body-Colored Rear Bumper w/Colored Rub Strip/Fascia Accent
- Black Side Windows Trim- Body-Colored Door Handles
- Metal-Look Bodyside Insert, Black Bodyside Cladding and Black Wheel Well Trim
- Body-Colored Power w/Tilt Down Heated Side Mirrors w/Power Folding and Turn Signal Indicator
- Fixed Rear Window w/Variable Intermittent Wiper and Defroster - Deep Tinted Glass
- Speed Sensitive Rain Detecting Variable Intermittent Wipers w/Heated Jets
- Front Windshield -inc: Electrically Heated Glass
- Galvanized Steel/Aluminum/Composite Panels- Lip Spoiler- Silver Grille
- Power Liftgate Rear Cargo Access
- Tailgate/Rear Door Lock Included w/Power Door Locks
- Fully Automatic Projector Beam High Intensity Low/High Beam Daytime Running Auto-Leveling Directionally Adaptive Auto High-Beam Headlamps w/Washer and Delay-Off
- Front And Rear Fog Lamps- Cornering Lights- Perimeter/Approach Lights
- LED Brakelights

Safety

- Heated & Cooled Front Bucket Seats -inc: 10/8 way power front seats, electric driver's and passenger's adjustment and memory
- Driver Seat- Passenger Seat
- 60-40 Folding Bench Front Facing Heated Fold Forward Seatback Rear Seat
- Manual Tilt/Telescoping Steering Column
- Gauges -inc: Speedometer, Odometer, Engine Coolant Temp, Tachometer, Trip Odometer and Trip Computer
- Power Rear Windows- Heated Leather Steering Wheel- Front Cupholder
- Rear Cupholder- Front Cigar Lighter(s)- Proximity Key For Doors And Push Button Start
- Valet Function- Power Fuel Flap Locking Type
- Remote Keyless Entry w/Integrated Key Transmitter, Illuminated Entry and Panic Button
- Remote Releases -Inc: Power Cargo Access- HomeLink Garage Door Transmitter
- Cruise Control w/Steering Wheel Controls- Dual Zone Front Automatic Air Conditioning
- HVAC -inc: Underseat Ducts, Residual Heat Recirculation and Console Ducts
- Illuminated Glove Box- Driver Foot Rest- Full Cloth Headliner
- Aluminum Gear Shift Knob

- Interior Trim -inc: Genuine Wood Instrument Panel Insert, Aluminum Console Insert and Aluminum Interior Accents
- Premium Oxford Leather Seat Trim -inc: twin needle stitching on seats, fascia panel, door tops and center console lid
- Day-Night Auto-Dimming Rearview Mirror
- Driver And Passenger Visor Vanity Mirrors w/Driver And Passenger Illumination
- Full Floor Console w/Covered Storage and 3 12V DC Power Outlets
- Front And Rear Map Lights- Fade-To-Off Interior Lighting
- Full Carpet Floor Covering -inc: Carpet Front And Rear Floor Mats- Carpet Floor Trim
- Trunk/Hatch Auto-Latch- Rigid Cargo Cover- Cargo Space Lights
- FOB Controls -inc: Trunk/Hatch/Tailgate and Windows
- Memory Settings -inc: Driver Seat and Door Mirrors
- Driver / Passenger And Rear Door Bins- Delayed Accessory Power
- Power Door Locks w/Autolock Feature
- Power 1st Row Windows w/Front And Rear 1-Touch Up/Down - Systems Monitor
- Redundant Digital Speedometer- Trip Computer- Outside Temp Gauge
- Digital/Analog Display
- Manual Adjustable Front Head Restraints and Manual Adjustable Rear Head Restraints
- Sliding Front Center Armrest and Rear Center Armrest w/Storage
- 2 Seatback Storage Pockets- Lumbar- Perimeter Alarm- Engine Immobilizer
- 3 12V DC Power Outlets- Air Filtration

Mechanical

- Engine: 2.0L I4- Transmission: 9-Speed Automatic -inc: Sport mode and paddle shifters
- 3.75 Axle Ratio- GVWR: 5,180 lbs- Engine Auto Stop-Start Feature
- Automatic Full-Time Four-Wheel Drive- 80-Amp/Hr Maintenance-Free Battery
- Towing Equipment -inc: Trailer Sway Control- Front And Rear Anti-Roll Bars
- Gas-Pressurized Shock Absorbers- Driver Control Ride Control Suspension
- Electric Power-Assist Speed-Sensing Steering- 18.5 Gal. Fuel Tank
- Quasi-Dual Stainless Steel Exhaust w/Chrome Tailpipe Finisher
- Permanent Locking Hubs- Strut Front Suspension w/Coil Springs
- Strut Rear Suspension w/Coil Springs
- 4-Wheel Disc Brakes w/4-Wheel ABS, Front Vented Discs, Brake Assist, Hill Descent Control, Hill Hold Control and Electric Parking Brake

Please see the vehicle description for the sales representative's contact phone number!

Mt Moriah Auto Sales

mtmoriahautos.com

901-368-5505

2571 Mt. Moriah Road

Memphis, Tennessee 38115

© 2019 AutoRevo - All rights reserved. - Powered by AutoRevo