



## 2014 Harley-Davidson® FLSTC103

View this vehicle on our website at [northshoreharley-davidson.com](http://northshoreharley-davidson.com)

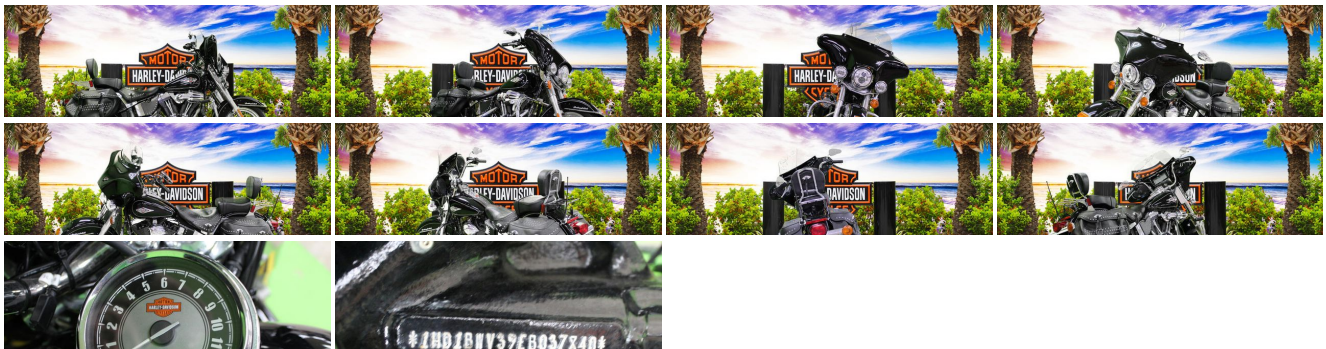
985-641-5100

791 W I-10 Service Rd, Slidell, LA 70458

Photos

Details

Contact



### Specifications:

Year:	2014
VIN:	1HD1BWV39EB037840
Make:	Harley-Davidson®
Stock:	037840U
Model/Trim:	FLSTC103
Condition:	Pre-Owned
Engine:	1689 cc V Twin
Exterior:	Unknown
Transmission:	6 Speed Manual Six-Speed Cruise Drive®

Mileage:

0

## Vehicle Description

### 2014 Harley-Davidson® Heritage Softail® Classic

Blazing from the past with original dresser spirit and modern touring capabilities.

The 2014 Harley-Davidson® Heritage Softail® Classic motorcycle FLSTC is fully equipped with modern touring capabilities and even has a removable motorcycle windshield. The Harley® Heritage Softail® Classic model features a powerful air-cooled Twin Cam 103 Harley® engine with 6 speed cruise drive transmission, providing more performance power for passing, hill-climbing, and riding with passenger and luggage. Enjoy mile after mile with a large capacity 5 gallon Softail fuel tank. The H-D® Softail® model's tank is also dripping with authentic Harley-Davidson® style. The Harley® FLSTC model has full length rider footboards with rubber vibration isolation for added comfort. Another of the many great features of this classic motorcycle is the detachable motorcycle windshield. You can remove the Harley® Heritage Softail® windshield for a new look.

Features may include:

- Hidden Rear Shocks

If you want a comfortable bike but love that rigid-suspension look, you've come to the right bike. We've kept all the modern comforts where they belong—below the surface of a rad, vintage-looking bike. You get the classic lines of a vintage hardtail frame with the horizontal rear shocks hidden in the guts. It's a signature rigid look, and you'll only find it on a Softail® model.

- Nostalgic Custom Style

Do laced wheels, whitewalls and studded leather add to the way a bike feels on the road? Of course they do. It's these extras that make the Heritage Softail® Classic model the quintessential boulevard cruiser. As rallies were gaining grassroots traction in the '40s, you'd roll into Daytona Bike Week expecting new stories and new styles. There was really something going on, and it's still alive and well in this bike. Take the saddlebags, studded with style straight from that golden era, with hidden quick-detach buckles. Or the fenders—full and fluid, with chrome highlights and matching paint. Or that big, commanding 7-inch ball headlamp, chromed and classy. And let's talk wheels. You can go with the standard steel-laced wheels on blackwalls with a chrome hub. Or turn the clock all the way back with the optional chrome laces and wide whitewalls.

- Pure Harley-Davidson® Styling

Feast your eyes on the Twin Cam 103™ engine and there's no mistaking its roots. This is authentic Harley-Davidson® style through and through with an attention to detail you won't find from any other motorcycle company. Black powder-coated heads and cylinders are highlighted by machined cooling fin tips and chrome rocker covers. It's a jewel machined out of metal. Pure. Dripping with power. From the classic edge of the cooling fins to the clean lines of cases and covers—the Twin Cam 103™ engine makes an ironclad statement about holding on to what's right and staying true to what satisfies.

- Standard Anti-Lock Brakes

When it comes to the Heritage Softail® Classic model with ABS, stopping power has a double meaning. The components of our ABS are tastefully hidden within the wheel hub, so you'll still turn heads with clean, streamlined design. More importantly, though, you get certainty in the saddle knowing your bike's going to behave when you need it.

- Tall Handlebar

Classic style and maximum comfort. That's the perfect balance of the tall handlebars that come standard on the Heritage Softail® Classic model. They're designed to keep you comfortably propped in a commanding position while making sure your neck muscles stay calm and relaxed mile after mile, state after state. Durable stainless steel insures the structural rigidity you expect from Harley-Davidson® with the deep, lustrous finish you demand.

### Installed Options

Mike Bruno's Northshore Harley-Davidson

View this car on our website at [northshoreharley-davidson.com/6664255](http://northshoreharley-davidson.com/6664255)

Website: [northshoreharley-davidson.com](http://northshoreharley-davidson.com)

Phone: [985-641-5100](tel:985-641-5100)

Map: [791 W I-10 Service Rd, Slidell, LA 70458](#)

