

2007 Nissan Murano SL

View this car on our website at hoppermotorplex.com/6662035/ebrochure

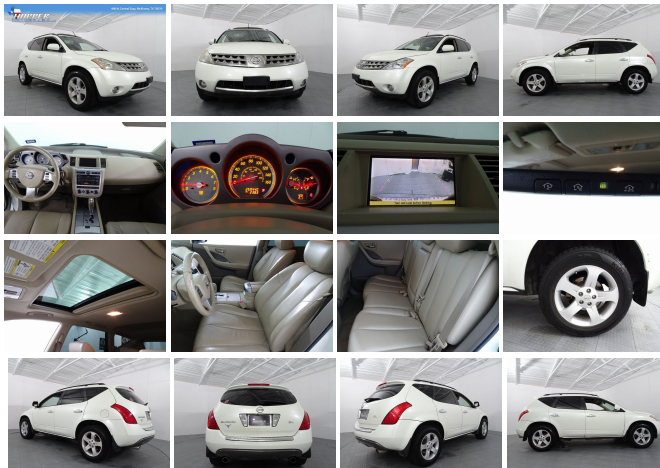


Our Price **\$0**

Specifications:

Year:	2007
VIN:	JN8AZ08T17W515836
Make:	Nissan
Stock:	15836X
Model/Trim:	Murano SL
Condition:	Pre-Owned
Body:	SUV
Exterior:	Midnight Blue Pearl
Engine:	3.5L DOHC MFI V6 engine
Interior:	Hopper Cloth
Mileage:	259,438
Drivetrain:	Front Wheel Drive
Economy:	City 20 / Highway 25

2007 Nissan Murano Glacier Pearl 4D Sport Utility FWD CVT with Xtronic 3.5L V6 DOHC 24V CVT with Xtronic.



2007 Nissan Murano SL

Hopper Motorplex - 214-544-0102 - View this car on our website at hoppermotorplex.com/6662035/ebrochure

Our Location :



2007 Nissan Murano SL

Hopper Motorplex - 214-544-0102 - View this car on our website at hoppermotorplex.com/6662035/ebrochure

Installed Options

Interior

- Front bucket seats
- 10-way pwr driver seat w/pwr lumbar support & fore/aft adjustable headrest
- 4-way manual passenger seat w/fore/aft adjustable headrest
- 60/40 split flat-fold reclining rear seat w/(3) head restraints, fold down center armrest w/cupholders & cargo area release levers
- Luxury seat cloth- Center console mounted sliding armrest
- Double fold center console lid- Coin box w/lid- Tilt steering column
- 3-spoke leather-wrapped steering wheel w/illuminated cruise/audio controls
- 3-pod style fine vision instrumentation cluster-inc: tachometer, twin LCD trip odometers, coolant temp
- Immobilizer system- Pwr windows- Pwr door locks w/2-turn unlock feature
- HomeLink universal transceiver- Vehicle security system- Remote keyless entry
- Cruise control- Illuminated entry system w/light fade-out feature
- Air conditioning w/dual zone automatic temperature control - Rear B-pillar A/C vents
- Rear window defroster- AM/FM stereo w/CD player, (6) speakers
- 7" color LCD display monitor- Lockable glove box- (3) 12-volt pwr outlets
- Dual front/rear cup holders- Real aluminum trim
- Auto-dimming rearview mirror w/compass- Rearview camera
- Illuminated visor vanity mirrors- Front dual overhead map lamps
- Rear dual overhead reading lights- Sunglass tray- Cell phone holder
- Front seatback pockets- Under cargo floor storage

Exterior

- Body-colored front/rear bumpers w/chrome lower front bumper
- Brushed aluminum rear bumper protector- Rear spoiler- Chrome front grille
- Auto on/off halogen headlights w/retaining function - Front fog lamps
- LED rear combination lights- UV cut glass front windows- UV cut glass windshield
- Rear privacy glass- Body-colored pwr mirrors- Variable intermittent windshield wipers
- Rear intermittent wiper- Chrome door handles- Chrome accent side sills

Safety

- Front bucket seats
- 10-way pwr driver seat w/pwr lumbar support & fore/aft adjustable headrest
- 4-way manual passenger seat w/fore/aft adjustable headrest
- 60/40 split flat-fold reclining rear seat w/(3) head restraints, fold down center armrest w/cupholders & cargo area release levers
- Luxury seat cloth- Center console mounted sliding armrest
- Double fold center console lid- Coin box w/lid- Tilt steering column
- 3-spoke leather-wrapped steering wheel w/illuminated cruise/audio controls
- 3-pod style fine vision instrumentation cluster-inc: tachometer, twin LCD trip odometers, coolant temp
- Immobilizer system- Pwr windows- Pwr door locks w/2-turn unlock feature
- HomeLink universal transceiver- Vehicle security system- Remote keyless entry
- Cruise control- Illuminated entry system w/light fade-out feature
- Air conditioning w/dual zone automatic temperature control - Rear B-pillar A/C vents
- Rear window defroster- AM/FM stereo w/CD player, (6) speakers
- 7" color LCD display monitor- Lockable glove box- (3) 12-volt pwr outlets
- Dual front/rear cup holders- Real aluminum trim
- Auto-dimming rearview mirror w/compass- Rearview camera
- Illuminated visor vanity mirrors- Front dual overhead map lamps
- Rear dual overhead reading lights- Sunglass tray- Cell phone holder
- Front seatback pockets- Under cargo floor storage

Mechanical

- 3.5L DOHC MFI V6 engine- Double-tipped platinum spark plugs
- Electronically controlled liquid-filled engine mounts
- Xtronic continuously variable automatic transmission- Front wheel drive
- 4-wheel independent suspension- Front/rear stabilizer bars- P235/65TR18 all-season tires
- 18" 6-spoke alloy wheels- Temporary spare tire located under cargo area floor
- Pwr rack & pinion steering- 4-wheel vented disc brakes- 4-wheel anti-lock braking system
- Electronic brake distribution- Brake assist- Dual exhaust w/chrome finishers

Hopper Motorplex

hoppermotorplex.com

214-544-0102

900 N Central Expy

McKinney, Texas 75070

© 2019 AutoRevo - All rights reserved. - Powered by [AutoRevo](#)