

2018 GMC Yukon SLT NAV, BACK-UP, HTD/COOL LTH, QUADS, 20'S, 19K!

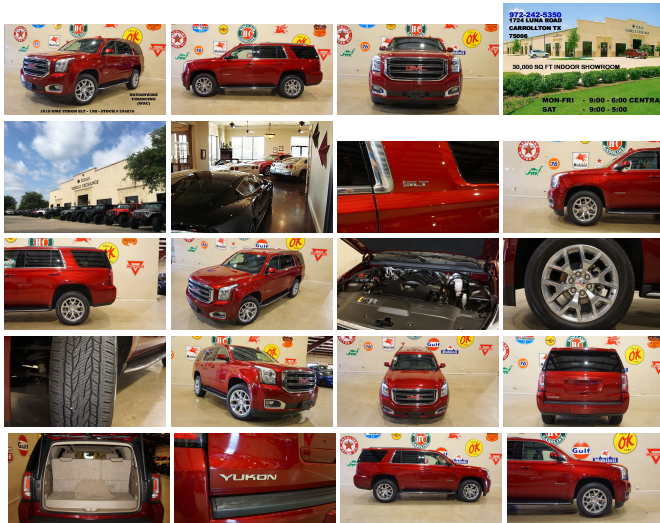
View this car on our website at tveauto.com/6661128/ebrochure



Our Price **\$44,900**

Specifications:

| | |
|----------------------|---|
| Year: | 2018 |
| VIN: | 1GKS1BKC4JR294870 |
| Make: | GMC |
| Stock: | 294870 |
| Model/Trim: | Yukon SLT NAV, BACK-UP, HTD/COOL LTH, QUADS, 20'S, 19K! |
| Condition: | Pre-Owned |
| Body: | SUV |
| Exterior: | Crimson Red Tintcoat |
| Engine: | ENGINE, 5.3L ECOTEC3 V8 |
| Interior: | Cocoa/Dune Leather |
| Transmission: | TRANSMISSION, 6-SPEED AUTOMATIC, ELECTRONICALLY CONTROLLED |
| Mileage: | 19,743 |
| Drivetrain: | Rear Wheel Drive |
| Economy: | City 16 / Highway 23 |



NATION WIDE FINANCING

SUBMIT CREDIT APP WWW.TVEAUTO.COM

OR CALL 972-242-5350

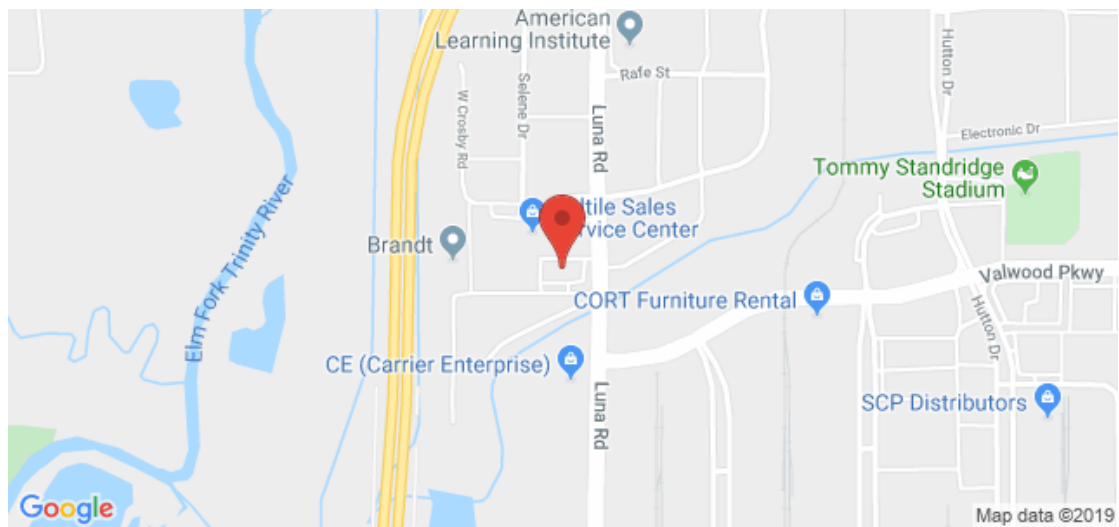
2018 GMC YUKON SLT RWD, 5.3L V8
ECOTEC3 ENGINE, AUTOMATIC
TRANSMISSION, ONLY 19K, CRIMSON RED
TINTCOAT W/COCOA & DUNE LEATHER
INTERIOR, CARFAX REPORTS 1 OWNER,
APPEARS TO BE A NON-SMOKER, REMOTE
START, FOGLIGHTS, FRONT & REAR PARK
DISTANCE SENSORS, NAVIGATION, BACK-
UP CAMERA, RUNNING BOARDS, POWER
WINDOWS, POWER DOOR LOCKS, POWER
FOLDING HEATED MIRRORS WITH TURN
SIGNALS. BLIND SPOT CONTROL. LANE

DEPARTURE WARNING, POWER & HEATED TILT/TELESCOPE STEERING WHEEL WITH AUDIO & CRUISE CONTROLS, FORWARD COLLISION ALERT, DUAL POWER HEATED & COOLED FRONT SEATS WITH DRIVER 2 MEMORY POSITION, POWER ADJUSTABLE PEDALS, TRACTION CONTROL, ICE COLD A/C, DUAL CLIMATE CONTROL, BOSE HD AM/FM/XM STEREO WITH CD PLAYER, BLUETOOTH, SELF DIMMING REAR VIEW MIRROR, ONSTAR, HOMELINK GARAGE CONTROLS, DUAL LIGHTED VANITY MIRRORS, SECOND ROW POWER FOLD & HEATED BUCKET SEATS, REAR A/C CONTROL & VENTS, POWER FOLD THIRD ROW SEATS, POWER LIFTGATE, TOW PACKAGE WITH RECEIVER HITCH, FLOOR MATS, OWNER'S MANUAL, 2 KEYS/2 REMOTES. 20 IN POLISHED ALUMINUM WHEELS, FRONT TIRES ARE CONTINENTAL 275/55R/20 WITH APPROX 50% TREAD LIFE REMAINING, REAR TIRES ARE CONTINENTAL 275/55R/20 WITH APPROX 50% TREAD LIFE REMAINING. GIVE US A CALL @ 972-242-5350 OR STOP BY FOR A TEST DRIVE. 1724 LUNA RD IN CARROLLTON - 2 MILES NORTH OF 635. CLICK ON THE CARFAX ICON TO VIEW A FULL REPORT AT NO COST TO YOU.

2018 GMC Yukon SLT NAV,BACK-UP,HTD/COOL LTH,QUADS,20'S,19K!

Texas Vehicle Exchange - 972-242-5350 - View this car on our website at tveauto.com/6661128/ebrochure

Our Location :



2018 GMC Yukon SLT NAV, BACK-UP, HTD/COOL LTH, QUADS, 20'S, 19K!

Texas Vehicle Exchange - 972-242-5350 - View this car on our website at veauto.com/6661128/ebrochure

Installed Options

Interior

- Assist handles, 1st row passenger and 2nd row outboard seats - Cargo net
- Climate control, tri-zone automatic, with individual climate settings for driver, right-front passenger and rear passengers
- Console, floor with storage area, cup holders
- Cruise control, electronic with set and resume speed (Not included when (Y66) Adaptive Cruise Control is ordered.)
- Defogger, rear-window electric- Door locks, power programmable with lockout protection
- Driver Information Center, 4.2" diagonal multi-color- Floor covering, color-keyed carpeting
- Floor mats, color-keyed carpeted first and second row, removable
- Lighting, interior includes courtesy lighting with theater dimming, lighting for front and rear door handles, front and rear passenger footwells and door storage area
- Lighting, interior with dome light driver- and passenger-side door switch with delayed entry feature, cargo lights, door handle or Remote Keyless Entry-activated illuminated entry and map lights in front and second seat positions
- Mirror, inside rearview auto-dimming
- Passive Entry System includes (AQQ) Remote Keyless Entry
- Pedals, power-adjustable for accelerator and brake
- Power outlet, 110-volt, 1.1 Amp, 150 Watt
- Power outlets, 5 auxiliary, 12-volt includes outlets in the instrument panel, console, back of the console, 1 in 3rd row and 1 in the cargo area.
- Remote vehicle start includes extended range Remote Keyless Entry- Safety Alert Seat
- Seats, front bucket with perforated leather-appointed heated and ventilated seat cushions, 12-way power driver and passenger seat includes 6-way power cushions, driver seat 2-position memory, 4-way power lumbar control and power recline
- Seats, heated and ventilated driver and front passenger perforated leather-appointed
- Seats, heated second row, outboard positions
- Seats, second row 60/40 split-folding bench power release
- Seats, third row 60/40 split-bench, power fold- Steering column, power tilt and telescopic
- Steering wheel controls, mounted audio controls and cruise controls Driver Information Center controls

- Steering wheel, heated, leather-wrapped
- Theft-deterrent system, electrical, unauthorized entry
- Universal Home Remote includes garage door opener, programmable
- Windows, power all express down, front express up

Exterior

- Active aero shutters, front
- Assist steps, Black with chrome strip (Deleted when (RVQ) Black assist step kit, LPO or (VXH) Chrome assist step kit, LPO, is ordered.)
- Fog lamps with chrome surrounds- Glass, deep-tinted
- Headlamps, IntelliBeam, automatic high beam on/off- Headlamps, halogen projector
- Liftgate, power, hands free- Luggage rack side rails, roof-mounted, Black
- Mirrors, outside heated power-adjustable, power-folding and driver-side auto-dimming, body-color with integrated turn signal indicators and ground illumination.
- Tire carrier, lockable outside spare winch-type mounted under frame at rear
- Tire, spare P265/70R17 all-season, blackwall- Tires, P265/65R18 all-season, blackwall
- Wheel, full-size spare 17" (43.2 cm) steel
- Wheels, 18" x 8.5" (45.7 cm x 21.6 cm) bright machined aluminum
- Windshield style, acoustic laminated glass- Windshield, solar-absorbing- Wiper, rear
- Wipers, front rain-sensing, intermittent

Safety

- Assist handles, 1st row passenger and 2nd row outboard seats - Cargo net
- Climate control, tri-zone automatic, with individual climate settings for driver, right-front passenger and rear passengers
- Console, floor with storage area, cup holders
- Cruise control, electronic with set and resume speed (Not included when (Y66) Adaptive Cruise Control is ordered.)
- Defogger, rear-window electric- Door locks, power programmable with lockout protection
- Driver Information Center, 4.2" diagonal multi-color- Floor covering, color-keyed carpeting
- Floor mats, color-keyed carpeted first and second row, removable
- Lighting, interior includes courtesy lighting with theater dimming, lighting for front and rear door handles, front and rear passenger footwells and door storage area
- Lighting, interior with dome light driver- and passenger-side door switch with delayed entry feature, cargo lights, door handle or Remote Keyless Entry-activated illuminated entry and map lights in front and second seat positions
- Mirror, inside rearview auto-dimming
- Passive Entry System includes (AQQ) Remote Keyless Entry
- Pedals, power-adjustable for accelerator and brake
- Power outlet, 110-volt, 1.1 Amp, 150 Watt
- Power outlets, 5 auxiliary, 12-volt includes outlets in the instrument panel, console, back of the console, 1 in 3rd row and 1 in the cargo area.
- Remote vehicle start includes extended range Remote Keyless Entry- Safety Alert Seat
- Seats, front bucket with perforated leather-appointed heated and ventilated seat cushions, 12-way power driver and passenger seat includes 6-way power cushions, driver seat 2-position memory, 4-way power lumbar control and power recline
- Seats, heated and ventilated driver and front passenger perforated leather-appointed
- Seats, heated second row, outboard positions
- Seats, second row 60/40 split-folding bench power release
- Seats, third row 60/40 split-bench, power fold- Steering column, power tilt and telescopic
- Steering wheel controls, mounted audio controls and cruise controls Driver Information Center controls
- Steering wheel, heated, leather-wrapped
- Theft-deterrent system, electrical, unauthorized entry
- Universal Home Remote includes garage door opener, programmable
- Windows, power all express down, front express up

Mechanical

- Alternator, 150 amps
- Brakes, 4-wheel antilock, 4-wheel disc, VAC power with Brake Assist
- Cooling, auxiliary external transmission oil cooler, heavy-duty air-to-oil
- Cooling, external engine oil cooler, heavy-duty air-to-oil integral to driver side of radiator
- Differential, heavy-duty locking rear
- Engine, 5.3L EcoTec3 V8 with Active Fuel Management, Direct Injection and Variable Valve Timing, includes aluminum block construction (355 hp [265 kW] @ 5600 rpm, 383 lb-ft of torque [518 N-m] @ 4100 rpm)
- Exhaust, aluminized stainless-steel muffler and tailpipe
- GVWR, 7100 lbs. (3221 kg) (Standard on 2WD models.)- Keyless start, push button start
- Powertrain grade braking- Rear axle, 3.08 ratio- Rear wheel drive- Steering, power
- Suspension Package, Premium Smooth Ride
- Suspension, front coil-over-shock with stabilizer bar
- Suspension, rear multi-link with coil springs
- Tools, mechanical jack and wheel wrench stored in rear quarter trim

- Tow/haul mode selector, button located at end of shift lever
- Trailering equipment, heavy-duty includes trailering hitch platform, 7-wire harness with independent fused trailering circuits mated to a 7-way sealed connector and 2" trailering receiver
- Transmission, 6-speed automatic, electronically controlled with overdrive, tow/haul mode and tap up/tap down shifting

Option Packages

Factory Installed Packages

ENGINE, 5.3L ECOTEC3 V8
with Active Fuel Management, Direct Injection and Variable Valve Timing, includes aluminum block construction (355 hp [265 kW] @ 5600 rpm, 383 lb-ft of torque [518 N-m] @ 4100 rpm)

TRANSMISSION, 6-SPEED AUTOMATIC, ELECTRONICALLY CONTROLLED
with overdrive, tow/haul mode and tap up/tap down shifting

SEATS, SECOND ROW BUCKET, POWER RELEASE
\$795

CRIMSON RED TINTCOAT
\$495

SLT PREFERRED EQUIPMENT GROUP
Includes Standard Equipment

AUDIO SYSTEM, 8" DIAGONAL COLOR TOUCH SCREEN NAVIGATION WITH GMC INFOTAINMENT SYSTEM
\$495
AM/FM/SiriusXM stereo with seek-and-scan and digital clock, includes Bluetooth streaming audio for music and select phones; voice-activated technology for radio and phone; and Shop. Featuring Apple CarPlay and Android Auto capability for compatible phone; 5 USB ports and 1 auxiliary jack

COCOA/DUNE, PERFORATED LEATHER-APPOINTED SEAT TRIM
(Interior color has lighter/darker two-tone effect.)

WHEELS, 20" X 9" (50.8 CM X 22.9 CM) POLISHED ALUMINUM
\$1,700

Option Packages Total
\$3,485

972-242-5350

1724 Luna Road

Carrollton, TX 75006

© 2019 AutoRevo - All rights reserved. - Powered by AutoRevo