

# 2020 Jeep Gladiator Rubicon 4X4 LIFTED,LED'S,NAV,HTD LTH,FUEL WHLS

View this car on our website at [tveauto.com/6660512/ebrochure](http://tveauto.com/6660512/ebrochure)



Our Price **\$79,988**

## Specifications:

Year:	2020
VIN:	1C6JJTBG2LL115612
Make:	Jeep
Stock:	115612
Model/Trim:	Gladiator Rubicon 4X4 LIFTED,LED'S,NAV,HTD LTH,FUEL WHLS
Condition:	Pre-Owned
Body:	Pickup Truck
Exterior:	Bright White Clearcoat
Engine:	ENGINE: 3.6L V6 24V VVT UPG I W/ESS
Interior:	Black Leather
Transmission:	TRANSMISSION: 8-SPEED AUTOMATIC (850RE)
Mileage:	271
Drivetrain:	4 Wheel Drive
Economy:	City 16 / Highway 22

NATION WIDE FINANCING

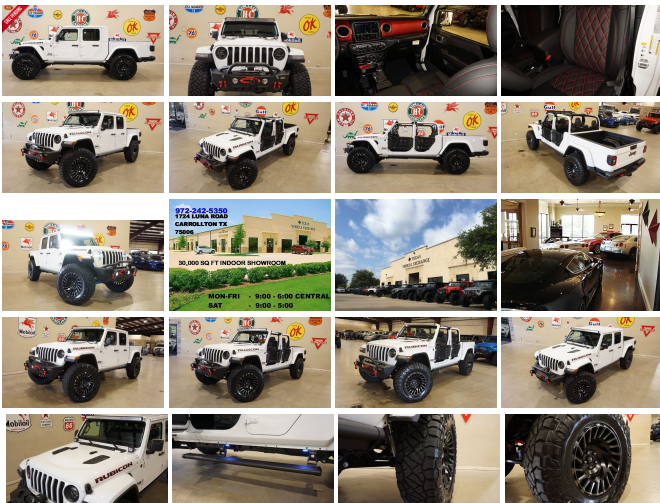
SUBMIT CREDIT APP [WWW.TVEAUTO.COM](http://WWW.TVEAUTO.COM)

OR CALL 972-242-5350

"BRIGHT WHITE CLEAR COAT EDITION"

CUSTOM BUILT 2020 JEEP GLADIATOR  
RUBICON 4X4 WITH 24R PACKAGE

UPGRADES INCLUDE:



- \* BRIGHT WHITE CLEAR COAT
- \* PAINTED TO MATCH 3 PIECE HARD TOP
- \* CUSTOM ALEA BLACK LEATHER WITH RED STITCHING
- \* FACTORY REMOTE START
- \* REMOTE PROXIMITY KEYLESS ENTRY
- \* COLD WEATHER GROUP
- \* LED LIGHTING GROUP
- \* JEEP ACTIVE SAFETY GROUP
- \* TRAILER TOW PACKAGE
- \* FORWARD FACING TRAIL CAM
- \* FACTORY 8.4 INCH TOUCH SCREEN NAVIGATION WITH HD AM/FM/SIRIUS STEREO & ALPINE PREMIUM AUDIO SYSTEM
- \* FACTORY BACK-UP CAMERA
- \* U-CONNECT
- \* (4.10 AXLE RATIO)
- \* 4 BODY ARMOR TRAIL DOORS & RECON MIRRORS
- \* SMITTYBILT XRC GEN 2 FRONT BUMPER WITH LED FOGLIGHTS
- \* FRONT D-RINGS & ISOLATORS (RED)
- \* SMITTYBILT NEW GEN II "X20" 10,000 LB WATERPROOF AND WIRELESS CONTROL WINCH WITH SYNTHETIC ROPE
- \* FACTORY 55 PROLINK (BLACK)
- \* FACTORY LED HEADLIGHTS
- \* RUGGED RIDGE BLACK HEADLIGHT GUARDS
- \* MOPAR 10TH ANNIVERSARY RUBICON POWER DOME HOOD
- \* PAINTED TO MATCH FRONT FENDERS

PAINTED TO MATCH EXTERIOR

- \* PRO COMP 4.0" SUSPENSION LIFT KIT WITH TERAFLX ADJUSTABLE TRACK BAR & FOX PERFORMANCE SERIES SHOCKS
- \* FOX FACTORY RACE SERIES STABILIZER KIT
- \* SUSPENSION PARTS (PAINTED RED)
- \* MOPAR AUXILIARY SWITCH BANK KIT
- \* 50" LED LIGHT BAR AND 2 RIGID INDUSTRIES D-SS DUALY SIDE SHOOTER LED PILLAR LIGHTS ( LIGHT BRACKETS PAINTED TO MATCH )
- \* AMP RESEARCH POWER RUNNING BOARDS WITH LED LIGHT KIT
- \* SPRAY IN BEDLINER
- \* FACTORY STEEL REAR BUMPER WITH REAR PARK DISTANCE SENSORS
- \* SUPERCHIPS FLASHCAL PROGRAMMER
- \* 20" FUEL "CYCLONE" WHEELS
- \* BRAND NEW NITTO RIDGE GRAPPLER 38X13.50R/20 TIRES

WE BUILD EVERY JEEP WITH PRIDE! DO NOT HESITATE TO CALL US WITH THIS JEEP BUILD. WE CAN MAKE CHANGES TO THIS JEEP BUILD OR CUSTOM BUILD ANY JEEP TO YOUR PREFERENCE. GIVE US A CALL @ 972-242-5350 OR STOP BY FOR A TEST DRIVE. 1724 LUNA RD IN CARROLLTON - 2 MILES NORTH OF 635.

Our Location :



2020 Jeep Gladiator Rubicon 4X4 LIFTED,LED'S,NAV,HTD LTH,FUEL WHLS  
Texas Vehicle Exchange - 972-242-5350 - View this car on our website at [veauto.com/6660512/ebrochure](https://veauto.com/6660512/ebrochure)

Installed Options

Interior

- 6-Way Driver Seat -inc: Manual Recline, Height Adjustment, Fore/Aft Movement and Manual Lumbar Support
- Front Seats w/Cloth Back Material and Manual Driver Lumbar
- Full Carpet Floor Covering -inc: Carpet Front And Rear Floor Mats
- Gauges -inc: Speedometer, Odometer, Voltmeter, Oil Pressure, Engine Coolant Temp, Tachometer, Engine Hour Meter, Trip Odometer and Trip Computer
- Power 1st Row Windows w/Driver And Passenger 1-Touch Down
- Power Door Locks w/Autolock Feature- Power Rear Windows
- Premium Cloth Low-Back Bucket Seats- Proximity Key For Push Button Start Only
- Remote Keyless Entry w/Integrated Key Transmitter, Illuminated Entry and Panic Button
- Trip Computer- 2 12V DC Power Outlets
- 2 12V DC Power Outlets and 1 AC Power Outlet - 2 Seatback Storage Pockets
- 4-Way Passenger Seat -inc: Manual Recline and Fore/Aft Movement
- 60-40 Folding Split-Bench Front Facing Fold Forward Seatback Premium Cloth Rear Seat
- 97 mph Maximum Speed Calibration- Air Filtration- Analog Display- Compass
- Cruise Control w/Steering Wheel Controls- Day-Night Rearview Mirror
- Delayed Accessory Power
- Driver And Passenger Visor Vanity Mirrors w/Driver And Passenger Illumination
- Engine Immobilizer- Fade-To-Off Interior Lighting- Front And Rear Map Lights
- Front Center Armrest w/Storage
- Full Floor Console w/Locking Storage, 2 12V DC Power Outlets and 1 AC Power Outlet
- Garage Door Transmitter- HVAC -inc: Console Ducts- Illuminated Front Cupholder
- Illuminated Rear Cupholder
- Instrument Panel Bin, Dashboard Storage, Driver / Passenger And Rear Door Bins
- Interior Trim -inc: Colored Instrument Panel Insert, Metal-Look Door Panel Insert, Metal-Look Console Insert and Metal-Look Interior Accents
- Leather Steering Wheel- Locking Glove Box
- Manual Adjustable Front Head Restraints and Foldable Rear Head Restraints
- Manual Tilt/Telescoping Steering Column- Outside Temp Gauge- Perimeter Alarm

Option Packages

Factory Installed Packages

ENGINE: 3.6L V6 24V VVT UPG I W/ESS	
TRANSMISSION: 8-SPEED AUTOMATIC (850RE)	
-inc: Tip Start, Transmission Skid Plate, Selec-Speed Control	\$2,000
8.4" RADIO & PREMIUM AUDIO GROUP	
-inc: Emergency/Assistance Call, SiriusXM Traffic Plus, Alpine Premium Audio System, HD Radio, Radio: Uconnect 4C Nav w/8.4" Display, Rear View Auto Dim Mirror, For Details, Visit DriveUconnect.com, 1-Year SiriusXM Guardian Trial, 5-Year SiriusXM Travel Link Service, 5-Year SiriusXM Traffic Service, SiriusXM Travel Link	\$1,595
AUXILIARY SWITCH GROUP	
-inc: 700 Amp Maintenance Free Battery, 240 Amp Alternator, Auxiliary Switches	\$295
BODY COLOR 3-PIECE HARD TOP	
-inc: Freedom Panel Storage Bag, Rear Window Defroster, Rear Sliding Window, No Soft Top	\$2,295
BODY COLOR FENDER FLARES (2-PIECE)	
	\$495
COLD WEATHER GROUP	

- Redundant Digital Speedometer- Smart Device Integration- Systems Monitor
- Urethane Gear Shift Knob- Voice Activated Dual Zone Front Automatic Air Conditioning

## Exterior

- Black Front Bumper w/2 Tow Hooks- Black Rear Bumper w/2 Tow Hooks
- Front Fog Lamps
- Fully Automatic Aero-Composite Halogen Daytime Running Headlamps w/Delay-Off
- Manual Convertible Top w/Fixed Roll-Over Protection
- Tailgate/Rear Door Lock Included w/Power Door Locks- Tires: LT285/70R17C BSW A/T
- Wheels: 17" x 7.5" Granite Crystal Aluminum - Black Door Handles
- Black Power Heated Side Mirrors w/Manual Folding- Black Side Windows Trim
- Black Wheel Well Trim and Black Fender Flares- Body-Color Grille w/Colored Accents
- Clearcoat Paint w/Badging- Deep Tinted Glass- Falken Brand Tires
- Full-Size Spare Tire Stored Underbody w/Crankdown- Galvanized Steel/Aluminum Panels
- Regular Box Style- Removable Rear Window- Steel Spare Wheel
- Tailgate Rear Cargo Access- Variable Intermittent Wipers

## Safety

- 6-Way Driver Seat -inc: Manual Recline, Height Adjustment, Fore/Aft Movement and Manual Lumbar Support
- Front Seats w/Cloth Back Material and Manual Driver Lumbar
- Full Carpet Floor Covering -inc: Carpet Front And Rear Floor Mats
- Gauges -inc: Speedometer, Odometer, Voltmeter, Oil Pressure, Engine Coolant Temp, Tachometer, Engine Hour Meter, Trip Odometer and Trip Computer
- Power 1st Row Windows w/Driver And Passenger 1-Touch Down
- Power Door Locks w/Autolock Feature- Power Rear Windows
- Premium Cloth Low-Back Bucket Seats- Proximity Key For Push Button Start Only
- Remote Keyless Entry w/Integrated Key Transmitter, Illuminated Entry and Panic Button
- Trip Computer- 2 12V DC Power Outlets
- 2 12V DC Power Outlets and 1 AC Power Outlet - 2 Seatback Storage Pockets
- 4-Way Passenger Seat -inc: Manual Recline and Fore/Aft Movement
- 60-40 Folding Split-Bench Front Facing Fold Forward Seatback Premium Cloth Rear Seat
- 97 mph Maximum Speed Calibration- Air Filtration- Analog Display- Compass
- Cruise Control w/Steering Wheel Controls- Day-Night Rearview Mirror
- Delayed Accessory Power
- Driver And Passenger Visor Vanity Mirrors w/Driver And Passenger Illumination
- Engine Immobilizer- Fade-To-Off Interior Lighting- Front And Rear Map Lights
- Front Center Armrest w/Storage
- Full Floor Console w/Locking Storage, 2 12V DC Power Outlets and 1 AC Power Outlet
- Garage Door Transmitter- HVAC -inc: Console Ducts- Illuminated Front Cupholder
- Illuminated Rear Cupholder
- Instrument Panel Bin, Dashboard Storage, Driver / Passenger And Rear Door Bins
- Interior Trim -inc: Colored Instrument Panel Insert, Metal-Look Door Panel Insert, Metal-Look Console Insert and Metal-Look Interior Accents
- Leather Steering Wheel- Locking Glove Box
- Manual Adjustable Front Head Restraints and Foldable Rear Head Restraints
- Manual Tilt/Telescoping Steering Column- Outside Temp Gauge- Perimeter Alarm
- Redundant Digital Speedometer- Smart Device Integration- Systems Monitor
- Urethane Gear Shift Knob- Voice Activated Dual Zone Front Automatic Air Conditioning

## Mechanical

- 4-Wheel Disc Brakes w/4-Wheel ABS, Front And Rear Vented Discs, Brake Assist and Hill Hold Control
- Brake Actuated Limited Slip Differential
- Class II Towing Equipment -inc: Hitch and Trailer Sway Control
- Driver Selectable Front Locking Differential- Driver Selectable Rear Locking Differential
- Transmission: 6-Speed Manual- 1200lbs. Maximum Payload- 22 Gal. Fuel Tank
- 220 Amp Alternator- 4.10 Rear Axle Ratio- 5 Skid Plates- 50 State Emissions
- 650CCA Maintenance-Free Battery w/Run Down Protection- Auto Locking Hubs
- Electro-Hydraulic Power Assist Steering- Engine Auto Stop-Start Feature
- Engine Oil Cooler- Engine: 3.6L V6 24V VVT UPG I w/ESS
- Fox Brand Name Shock Absorbers
- Front Active w/Driver Control Anti-Roll Bar and Rear Anti-Roll Bar- GVWR: TBA
- Leading Link Front Suspension w/Coil Springs- Manual Transfer Case
- Part-Time Four-Wheel Drive- Performance Suspension- Single Stainless Steel Exhaust
- Trailer Wiring Harness- Trailing Arm Rear Suspension w/Coil Springs

-inc: Heated Steering Wheel, Heated Front Seats \$995

## INTEGRATED OFF-ROAD CAMERA

\$595

## LED LIGHTING GROUP

-inc: Daytime Running Lamps LED Accents, LED Park Turn Lamps, Front LED Fog Lamps, LED Reflector Headlamps, LED Taillamps \$995

## REMOTE PROXIMITY KEYLESS ENTRY

\$495

## SAFETY GROUP

-inc: ParkSense Rear Park Assist System, Blind Spot & Cross Path Detection \$995

## TRAILER TOW PACKAGE

-inc: Trailer Hitch Zoom, Class IV Hitch Receiver, Heavy Duty Engine Cooling, 240 Amp Alternator \$250

## QUICK ORDER PACKAGE 24R

-inc: Engine: 3.6L V6 24V VVT UPG I w/ESS, Transmission: 8-Speed Automatic (850RE)

## BRIGHT WHITE CLEARCOAT

## Option Packages Total

\$11,005

---

Texas Vehicle Exchange

[tveauto.com](https://tveauto.com)

972-242-5350

1724 Luna Road

Carrollton, TX 75006

© 2024 AutoRevo - All rights reserved. - Powered by [AutoRevo](#)