

# 2019 Jeep Wrangler JL Unlimited Sport 4X4 DUPONT KEVLAR,LIFTED,LED'S,FUEL WHLS

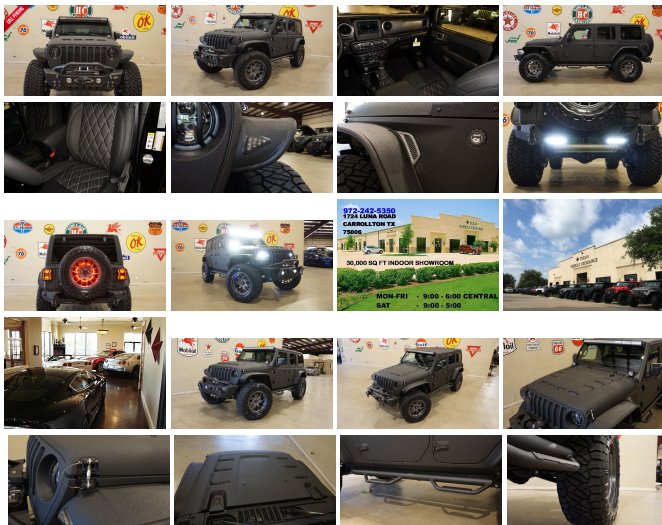
View this car on our website at [tveauto.com/6659340/ebrochure](http://tveauto.com/6659340/ebrochure)



Our Price **\$69,900**

## Specifications:

Year:	2019
VIN:	1C4HJXDG5KW660261
Make:	Jeep
Stock:	660261
Model/Trim:	Wrangler JL Unlimited Sport 4X4 DUPONT KEVLAR,LIFTED,LED'S,FUEL WHLS
Condition:	Pre-Owned
Body:	SUV
Exterior:	Black
Engine:	ENGINE: 3.6L V6 24V VVT UPG I W/ESS
Interior:	Black Leather
Transmission:	TRANSMISSION: 8-SPEED AUTOMATIC (850RE)
Mileage:	38
Drivetrain:	4 Wheel Drive
Economy:	City 17 / Highway 23



NATION WIDE FINANCING

SUBMIT CREDIT APP [WWW.TVEAUTO.COM](http://WWW.TVEAUTO.COM)

OR CALL 972-242-5350

**"RAPTOR BLACK EDITION"**

CUSTOM BUILT **KEVLAR** 2019 JEEP  
WRANGLER JL UNLIMITED SPORT 4X4  
WITH 24S PACKAGE

**UPGRADES INCLUDE:**

- \* RAPTOR BLACK KEVLAR COATING WITH ANTHRACITE ACCENTS
- \* CUSTOM ALEA BLACK LEATHER WITH SILVER STITCHING
- \* HEATED FRONT SEATS
- \* FACTORY REMOTE START
- \* CONVENIENCE GROUP
- \* FACTORY 7.0 INCH TOUCH SCREEN WITH AM/FM/SIRIUS STEREO & ALPINE PREMIUM AUDIO SYSTEM
- \* FACTORY BACK-UP CAMERA
- \* U-CONNECT
- \* SMITTYBILT XRC GEN 2 FRONT BUMPER WITH LED FOGLIGHTS
- \* FRONT D-RINGS & ISOLATORS (ANTHRACITE)
- \* SMITTYBILT NEW GEN II "X20" 10,000 LB WATERPROOF AND WIRELESS CONTROL WINCH WITH SYNTHETIC ROPE
- \* FACTORY 55 PROLINK (BLACK)
- \* FACTORY MESH GRILLE PAINTED ANTHRACITE
- \* EVOLUTION 2 LED HEADLIGHTS
- \* RUGGED RIDGE BLACK HEADLIGHT GUARDS
- \* NEW RK SPORT RAM AIR VENTED HOOD
- \* DRAKE OFF ROAD HOOD LATCHES
- \* BUSHWACKER BLACK JL FLAT STYLE FENDERS
- \* RUBICON EXPRESS 2.5" LIFT KIT WITH TERAFLX FALCON SERIES 3 SHOCKS & RESERVOIRS
- \* TERAFLX FALCON STABILIZER KIT
- \* MOPAR AUXILIARY SWITCH BANK KIT

- \* 50" LED LIGHT BAR AND 2 RIGID INDUSTRIES D-SS DUALY SIDE SHOOTER LED PILLAR LIGHTS
- \* SMITTYBILT BLACK TUBULAR STEPS
- \* MOPAR BLACK FUEL DOOR
- \* EVOLUTION 2 BLACK LED TAIL LIGHTS
- \* RUGGED RIDGE BLACK TAIL LIGHT GUARDS
- \* TERAFLX ALPHA HD ADJUSTABLE SPARE TIRE ADAPTOR
- \* RUGGED RIDGE LED THIRD BRAKE LIGHT RING
- \* SMITTYBILT XRC GEN 2 REAR BUMPER WITH LED LIGHTS
- \* REAR D-RINGS & ISOLATORS (ANTHRACITE)
- \* ALL WEATHER FLOOR MATS
- \* SUPERCHIPS FLASHCAL PROGRAMMER
- \* 20" FUEL ANTHRACITE "TECH" WHEELS
- \* BRAND NEW NITTO RIDGE GRAPPLER 37X13.50R/20 TIRES

**WE BUILD EVERY JEEP WITH PRIDE! DO NOT HESITATE TO CALL US WITH THIS JEEP BUILD. WE CAN MAKE CHANGES TO THIS JEEP BUILD OR CUSTOM BUILD ANY JEEP TO YOUR PREFERENCE. GIVE US A CALL @ 972-242-5350 OR STOP BY FOR A TEST DRIVE. 1724 LUNA RD IN CARROLLTON - 2 MILES NORTH OF 635.**

**Our Location :**



2019 Jeep Wrangler JL Unlimited Sport 4X4 DUPONT KEVLAR,LIFTED,LED'S,FUEL WHLS  
 Texas Vehicle Exchange - 972-242-5350 - View this car on our website at [veauto.com/6659340/ebrochure](http://veauto.com/6659340/ebrochure)

**Installed Options**

**Interior**

- 6-Way Driver Seat -inc: Manual Recline, Height Adjustment, Fore/Aft Movement and Manual Lumbar Support
- Cloth Low-Back Bucket Seats
- Front Seats w/Cloth Back Material and Manual Driver Lumbar
- Full Carpet Floor Covering -inc: Carpet Front And Rear Floor Mats
- Gauges -inc: Speedometer, Odometer, Engine Coolant Temp, Tachometer, Engine Hour Meter, Trip Odometer and Trip Computer
- Manual Air Conditioning- Trip Computer- 2 12V DC Power Outlets
- 2 Seatback Storage Pockets
- 4-Way Passenger Seat -inc: Manual Recline and Fore/Aft Movement
- 60-40 Folding Split-Bench Front Facing Fold Forward Seatback Cloth Rear Seat
- Analog Display- Cargo Space Lights- Carpet Floor Trim, Carpet And Rubber Mat
- Compass- Cruise Control w/Steering Wheel Controls- Day-Night Rearview Mirror
- Delayed Accessory Power- Fade-To-Off Interior Lighting- Front And Rear Map Lights
- Front Center Armrest w/Storage
- Full Floor Console w/Locking Storage and 2 12V DC Power Outlets
- HVAC -inc: Console Ducts- Illuminated Front Cupholder- Illuminated Rear Cupholder
- Instrument Panel Bin, Dashboard Storage, Driver / Passenger And Rear Door Bins
- Interior Trim -inc: Metal-Look Instrument Panel Insert and Metal-Look Console Insert
- Locking Cargo Area Concealed Storage- Locking Glove Box
- Manual Adjustable Front Head Restraints and Foldable Rear Head Restraints
- Manual Tilt/Telescoping Steering Column- Outside Temp Gauge
- Proximity Key For Push Button Start Only - Redundant Digital Speedometer
- Removable 3rd Row Windows- Sentry Key Engine Immobilizer- Systems Monitor
- Urethane Gear Shift Knob- Vanity w/Driver And Passenger Auxiliary Mirror

**Exterior**

- Black Front Bumper w/2 Tow Hooks- Black Rear Bumper w/1 Tow Hook

**Option Packages**

**Factory Installed Packages**

<b>ENGINE: 3.6L V6 24V VVT UPG I W/ESS</b>	
<b>TRANSMISSION: 8-SPEED AUTOMATIC (850RE)</b> -inc: TIP Start, Dana M200 Rear Axle, Hill Descent Control	<b>\$2,000</b>
<b>ALPINE PREMIUM AUDIO SYSTEM</b> -inc: 220 Amp Alternator	<b>\$1,295</b>
<b>BLACK 3-PIECE HARD TOP</b> -inc: Freedom Panel Storage Bag, Rear Window Defroster, Rear Window Wiper/Washer, No Soft Top	<b>\$1,195</b>
<b>CONVENIENCE GROUP</b> -inc: Universal Garage Door Opener	<b>\$595</b>
<b>TECHNOLOGY GROUP</b> -inc: Google Android Auto, Cluster 7.0" TFT Color Display, SiriusXM Satellite Radio, 1-Yr SiriusXM Radio Service, For More Info, Call 800-643-2112, USB Host Flip, Integrated Center Stack Radio, 7.0" Touchscreen Display, Air Conditioning w/Auto Temp Control, Radio: Uconnect 4 w/7" Display, Apple CarPlay, Air Filtering, GPS Antenna Input	<b>\$995</b>

**QUICK ORDER PACKAGE 24S SPORT S**

- Manual Convertible Top w/Fixed Roll-Over Protection- Tires: 245/75R17 All Season
- Wheels: 17" x 7.5" Tech Silver Aluminum
- Aero-Composite Halogen Headlamps w/Delay-Off- Black Door Handles
- Black Fender Flares- Black Side Windows Trim- Body-Colored Grille- Clearcoat Paint
- Conventional Rear Cargo Access- Deep Tint Sunscreen Windows- Front Fog Lamps
- Full-Size Spare Tire Mounted Outside Rear
- Galvanized Steel/Aluminum/Magnesium Panels- Non-Lock Fuel Cap w/o Discriminator
- Removable Rear Window- Variable Intermittent Wipers

## Safety

- 6-Way Driver Seat -inc: Manual Recline, Height Adjustment, Fore/Aft Movement and Manual Lumbar Support
- Cloth Low-Back Bucket Seats
- Front Seats w/Cloth Back Material and Manual Driver Lumbar
- Full Carpet Floor Covering -inc: Carpet Front And Rear Floor Mats
- Gauges -inc: Speedometer, Odometer, Engine Coolant Temp, Tachometer, Engine Hour Meter, Trip Odometer and Trip Computer
- Manual Air Conditioning- Trip Computer- 2 12V DC Power Outlets
- 2 Seatback Storage Pockets
- 4-Way Passenger Seat -inc: Manual Recline and Fore/Aft Movement
- 60-40 Folding Split-Bench Front Facing Fold Forward Seatback Cloth Rear Seat
- Analog Display- Cargo Space Lights- Carpet Floor Trim, Carpet And Rubber Mat
- Compass- Cruise Control w/Steering Wheel Controls- Day-Night Rearview Mirror
- Delayed Accessory Power- Fade-To-Off Interior Lighting- Front And Rear Map Lights
- Front Center Armrest w/Storage
- Full Floor Console w/Locking Storage and 2 12V DC Power Outlets
- HVAC -inc: Console Ducts- Illuminated Front Cupholder- Illuminated Rear Cupholder
- Instrument Panel Bin, Dashboard Storage, Driver / Passenger And Rear Door Bins
- Interior Trim -inc: Metal-Look Instrument Panel Insert and Metal-Look Console Insert
- Locking Cargo Area Concealed Storage- Locking Glove Box
- Manual Adjustable Front Head Restraints and Foldable Rear Head Restraints
- Manual Tilt/Telescoping Steering Column- Outside Temp Gauge
- Proximity Key For Push Button Start Only - Redundant Digital Speedometer
- Removable 3rd Row Windows- Sentry Key Engine Immobilizer- Systems Monitor
- Urethane Gear Shift Knob- Vanity w/Driver And Passenger Auxiliary Mirror

## Mechanical

- Transmission: 6-Speed Manual- 1000lbs. Maximum Payload- 180 Amp Alternator
- 21.5 Gal. Fuel Tank- 3 Skid Plates- 3.45 Rear Axle Ratio
- 4-Wheel Disc Brakes w/4-Wheel ABS, Front Vented Discs, Brake Assist and Hill Hold Control
- 50 State Emissions- 650CCA Maintenance-Free Battery w/Run Down Protection
- Auto Locking Hubs- Brake Actuated Limited Slip Differential
- Electro-Hydraulic Power Assist Steering- Engine Auto Stop-Start Feature
- Engine Oil Cooler- Engine: 3.6L V6 24V VVT UPG I w/ESS
- Front And Rear Anti-Roll Bars- GVWR: 5,300 lbs- Gas-Pressurized Shock Absorbers
- Leading Link Front Suspension w/Coil Springs- Manual Transfer Case
- Normal Duty Suspension- Part-Time Four-Wheel Drive- Single Stainless Steel Exhaust
- Towing Equipment -inc: Trailer Sway Control
- Trailing Arm Rear Suspension w/Coil Springs

-inc: Engine: 3.6L V6 24V VVT UPG I w/ESS,  
Transmission: 8-Speed Automatic (850RE), Front  
1-Touch Down Power Windows, Speed Sensitive  
Power Locks, Power Heated Mirrors, Automatic  
Headlamps, Leather Wrapped Steering Wheel,  
Security Alarm, Remote Keyless Entry, Sun  
Visors w/Illuminated Vanity Mirrors

\$3,200

Option Packages Total

\$9,280

Texas Vehicle Exchange

[tveauto.com](http://tveauto.com)

972-242-5350

1724 Luna Road

Carrollton, TX 75006

© 2024 AutoRevo - All rights reserved. - Powered by AutoRevo