



2016 Acura ILX w/Premium Pkg

Khristian Cayias

Our Price \$13,871

View this vehicle on our website at gpmotorz.com

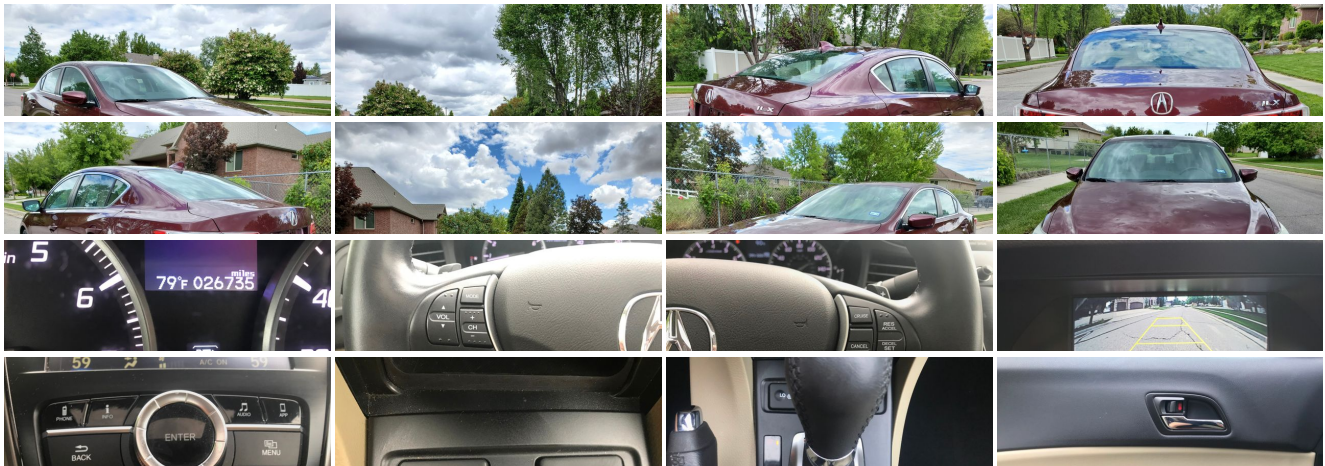
GP Motor Company

420 N Kays Dr , Kaysville, UT 84037

Photos

Details

Contact





Specifications:

Year:	2016
VIN:	19UDE2F72GA005192
Make:	Acura
Stock:	005192
Model/Trim:	ILX w/Premium Pkg
Condition:	Pre-Owned
Body:	Sedan
Exterior:	Burgundy
Engine:	Engine: 2.4L 16-Valve DOHC i-VTEC
Interior:	Tan
Mileage:	26,733
Drivetrain:	Front Wheel Drive
Economy:	City 25 / Highway 36

Vehicle Description

Awesome, clean title 2016 Acura ILX Premium for sale, this car is in great mechanical condition and runs and drives like a brand new car! The Acura ILX Premium is a great run around car because it gets great gas mileage and is super reliable. The ILX Premium comes with tons of great features like the great looking touch screen radio display, Digital dash display, outside temp display, Bluetooth with handsfree calling, backup camera, great looking heated leather interior, power seats with driver memory, USB input, AUX input, CD, AM/FM radio, cruise control, power mirrors, power locks, and power windows. The car does have some dings on it from a hailstorm it was caught in, which is why I have priced it so well. Give me a call or shoot me a text if you would like to come check it out. 247A

Installed Options

Interior

- 4-Way Power Passenger Seat -inc: Power Recline and Fore/Aft Movement
- Day-Night Auto-Dimming Rearview Mirror
- FOB Controls -inc: Trunk/Hatch/Tailgate, Windows and Sunroof/Convertible Roof
- Full Carpet Floor Covering -inc: Carpet Front And Rear Floor Mats
- Gauges -inc: Speedometer, Odometer, Engine Coolant Temp, Tachometer, Trip Odometer and Trip Computer
- Memory Settings -inc: Driver Seat and Door Mirrors
- Power 1st Row Windows w/Driver And Passenger 1-Touch Up/Down
- Power Door Locks w/Autolock Feature- Power Rear Windows
- Proximity Key For Doors And Push Button Start
- Remote Keyless Entry w/Integrated Key Transmitter, Illuminated Entry, Illuminated Ignition Switch and Panic Button
- Seats w/Leatherette Back Material- Trip Computer- 1 12V DC Power Outlet
- 1 Seatback Storage Pocket- Air Filtration- Analog Display
- Cargo Features -inc: Spare Tire Mobility Kit- Cargo Space Lights
- Carpet Floor Trim and Carpet Trunk Lid/Rear Cargo Door Trim
- Cruise Control w/Steering Wheel Controls- Delayed Accessory Power
- Driver And Passenger Visor Vanity Mirrors w/Driver And Passenger Illumination
- Driver Foot Rest- Driver Seat- Dual Zone Front Automatic Air Conditioning
- Engine Immobilizer- Fade-To-Off Interior Lighting
- Front Center Armrest and Rear Center Armrest- Front Cupholder- Front Map Lights
- Full Cloth Headliner- Full Floor Console w/Covered Storage and 1 12V DC Power Outlet
- Full Folding Bench Front Facing Fold Forward Seatback Rear Seat
- HVAC -inc: Underseat Ducts- Heated Front Sport Seats -inc: driver's 8-way power seat
- HomeLink Garage Door Transmitter- Illuminated Locking Glove Box
- Instrument Panel Covered Bin, Driver And Passenger Door Bins
- Interior Trim -inc: Metal-Look Instrument Panel Insert, Metal-Look Console Insert and Chrome/Metal-Look Interior Accents
- Leather Gear Shift Knob- Leather Steering Wheel- Leatherette Door Trim Insert

- Manual Adjustable Front Head Restraints and Manual Adjustable Rear Head Restraints
- Manual Tilt/Telescoping Steering Column- Outside Temp Gauge- Perimeter Alarm
- Rear Cupholder- Remote Releases -Inc: Mechanical Cargo Access and Mechanical Fuel
- Systems Monitor- Valet Function

Exterior

- Body-Colored Door Handles- Body-Colored Front Bumper
- Body-Colored Power Heated Side Mirrors w/Convex Spotter and Manual Folding
- Body-Colored Rear Bumper
- Chrome Side Windows Trim and Black Front Windshield Trim - Clearcoat Paint
- Express Open/Close Sliding And Tilting Glass 1st Row Sunroof w/Sunshade
- Fixed Rear Window w/Defroster- Front Windshield -inc: Sun Visor Strip
- Fully Automatic Projector Beam Led Low/High Beam Daytime Running Headlamps w/Delay-Off
- Fully Galvanized Steel Panels- LED Brakelights- Light Tinted Glass
- Metal-Look Grille w/Chrome Surround- Spare Tire Mobility Kit
- Speed Sensitive Variable Intermittent Wipers- Tires: P215/45R17 High-Performance AS
- Trunk Rear Cargo Access- Wheels w/Silver Accents
- Wheels: 17" x 7.0" Aluminum Alloy Noise-Reducing

Safety

- 4-Way Power Passenger Seat -inc: Power Recline and Fore/Aft Movement
- Day-Night Auto-Dimming Rearview Mirror
- FOB Controls -inc: Trunk/Hatch/Tailgate, Windows and Sunroof/Convertible Roof
- Full Carpet Floor Covering -inc: Carpet Front And Rear Floor Mats
- Gauges -inc: Speedometer, Odometer, Engine Coolant Temp, Tachometer, Trip Odometer and Trip Computer
- Memory Settings -inc: Driver Seat and Door Mirrors
- Power 1st Row Windows w/Driver And Passenger 1-Touch Up/Down
- Power Door Locks w/Autolock Feature- Power Rear Windows
- Proximity Key For Doors And Push Button Start
- Remote Keyless Entry w/Integrated Key Transmitter, Illuminated Entry, Illuminated Ignition Switch and Panic Button
- Seats w/Leatherette Back Material- Trip Computer- 1 12V DC Power Outlet
- 1 Seatback Storage Pocket- Air Filtration- Analog Display
- Cargo Features -inc: Spare Tire Mobility Kit- Cargo Space Lights
- Carpet Floor Trim and Carpet Trunk Lid/Rear Cargo Door Trim
- Cruise Control w/Steering Wheel Controls- Delayed Accessory Power
- Driver And Passenger Visor Vanity Mirrors w/Driver And Passenger Illumination
- Driver Foot Rest- Driver Seat- Dual Zone Front Automatic Air Conditioning
- Engine Immobilizer- Fade-To-Off Interior Lighting
- Front Center Armrest and Rear Center Armrest- Front Cupholder- Front Map Lights
- Full Cloth Headliner- Full Floor Console w/Covered Storage and 1 12V DC Power Outlet
- Full Folding Bench Front Facing Fold Forward Seatback Rear Seat
- HVAC -inc: Underseat Ducts- Heated Front Sport Seats -inc: driver's 8-way power seat
- HomeLink Garage Door Transmitter- Illuminated Locking Glove Box
- Instrument Panel Covered Bin, Driver And Passenger Door Bins
- Interior Trim -inc: Metal-Look Instrument Panel Insert, Metal-Look Console Insert and Chrome/Metal-Look Interior Accents
- Leather Gear Shift Knob- Leather Steering Wheel- Leatherette Door Trim Insert
- Manual Adjustable Front Head Restraints and Manual Adjustable Rear Head Restraints
- Manual Tilt/Telescoping Steering Column- Outside Temp Gauge- Perimeter Alarm
- Rear Cupholder- Remote Releases -Inc: Mechanical Cargo Access and Mechanical Fuel
- Systems Monitor- Valet Function

Mechanical

- 13.2 Gal. Fuel Tank- 3.94 Axle Ratio
 - 4-Wheel Disc Brakes w/4-Wheel ABS, Front Vented Discs, Brake Assist and Hill Hold Control
 - 45-Amp/Hr 410CCA Maintenance-Free Battery w/Run Down Protection
 - 95 Amp Alternator- Electric Power-Assist Speed-Sensing Steering
 - Engine: 2.4L 16-Valve DOHC i-VTEC- Front And Rear Anti-Roll Bars
 - Front-Wheel Drive- Gas-Pressurized Shock Absorbers
 - Multi-Link Rear Suspension w/Coil Springs- Single Stainless Steel Exhaust
 - Strut Front Suspension w/Coil Springs- Transmission w/Driver Selectable Mode
 - Transmission: 8-Speed Dual-Clutch -inc: torque converter and Sequential SportShift paddle shifters
-

GP Motor Company

View this car on our website at gpmotorz.com/6658083

Website: gpmotorz.com

Phone:

Map: [420 N Kays Dr , Kaysville, UT 84037](#)

