



2012 Jeep Grand Cherokee SRT8

Our No-Haggle Price \$21,987

Book Retail Value ~~\$26,877~~

View this vehicle on our website at leesburgautoimport.com

Leesburg Auto Import

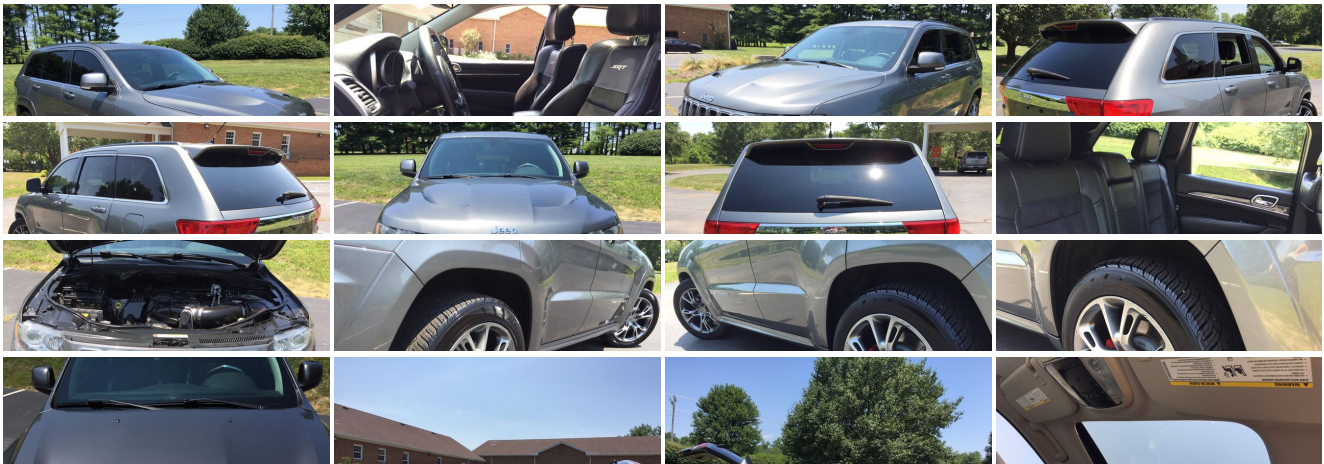
Toll Free: 1-866-249-5348, Local: 703-771-7600

2 Fairfax St SE , Leesburg, Virginia 20175

Photos

Details

Contact





Specifications:

Year:	2012
VIN:	1C4RJFDJXCC213423
Make:	Jeep
Stock:	L213423
Model/Trim:	Grand Cherokee SRT8
Condition:	Pre-Owned
Body:	SUV
Exterior:	GRAY
Engine:	6.4L VVT V8 SRT HEMI MDS ENGINE
Interior:	Leather
Mileage:	129,743
Drivetrain:	4 Wheel Drive
Economy:	City 12 / Highway 18

Vehicle Description

Installed Options

Interior

- Low-back bucket seats- Leather seating surfaces w/preferred suede
- Pwr 8-way driver/passenger seats -inc: driver seat memory - Heated front seats
- Ventilated front seats- Pwr door locks- Remote keyless entry- Keyless Enter-N-Go
- Remote proximity keyless entry- Memory for radio, driver seat, & mirrors
- Sentry key theft deterrent system- Speed control- 115V pwr outlet- 12-volt pwr outlet
- Auto-dimming rear view mirror w/microphone- 12-volt rear pwr outlet
- Pwr 4-way driver/passenger lumbar adjust- 60/40 folding rear seat- Heated rear seats
- Active head restraints- Full length floor console- Premium floor console armrest
- Luxury front/rear floor mats w/logo- Floor carpet- Lower bodyside cladding
- Leather wrapped steering wheel- Heated steering wheel- Steering wheel audio controls
- Steering wheel shift controls- Pwr tilt/telescoping steering column
- Premium instrument cluster w/tachometer- 180-mph speedometer
- Vehicle information center- Pwr front windows w/1-touch up & down
- Pwr locking fuel filler door- Remote start system- Retained accessory pwr
- Universal garage door opener- Security alarm
- Automatic air cond w/dual-zone temp control - Air filtering- Rear window defroster
- Glove box lamp- Illuminated cup holders- Overhead console
- Dual visors w/illuminated vanity mirrors- Passenger assist handles
- Removable rechargeable interior lamp- Illuminated entry- Front & rear LED lamps
- Driver/front passenger lower LED lamps- Bright pedals- Carbon fiber interior accents
- Leather wrapped shift knob- Cargo compartment cover- Cargo tie-down loops
- Cargo trim panel w/storage net

Exterior

- 20" x 10.0" forged aluminum painted wheels
- P295/45ZR20 BSW all-season run flat tires- Mirror memory- Compact spare tire
- Monotone paint- Black roof molding- Rear body color spoiler- Body color grille
- Body color fascia w/bright insert- Bi-xenon headlamps
- Auto high beam headlamp control- Automatic headlamps
- Automatic headlamp leveling system- Premium fog lamps- Tinted windshield
- Deep tint sunscreen glass- Tinted front door glass- Laminated front door glass
- Body color mirrors- Pwr multi-function mirrors- Heated mirrors- Mirror turn signals
- Auto-dimming driver side mirror- Auto-dimming passenger side mirror- Glass liftgate
- Rain sensing variable intermittent windshield wipers- Rear window wiper & washer
- Bright license plate brow- Body color door handles- Hood insulation

Option Packages

Factory Installed Packages

6.4L VVT V8 SRT HEMI MDS ENGINE

- Premium insulation group- Dual exhaust w/bright tips

Safety

- Low-back bucket seats- Leather seating surfaces w/preferred suede
- Pwr 8-way driver/passenger seats -inc: driver seat memory - Heated front seats
- Ventilated front seats- Pwr door locks- Remote keyless entry- Keyless Enter-N-Go
- Remote proximity keyless entry- Memory for radio, driver seat, & mirrors
- Sentry key theft deterrent system- Speed control- 115V pwr outlet- 12-volt pwr outlet
- Auto-dimming rear view mirror w/microphone- 12-volt rear pwr outlet
- Pwr 4-way driver/passenger lumbar adjust- 60/40 folding rear seat- Heated rear seats
- Active head restraints- Full length floor console- Premium floor console armrest
- Luxury front/rear floor mats w/logo- Floor carpet- Lower bodyside cladding
- Leather wrapped steering wheel- Heated steering wheel- Steering wheel audio controls
- Steering wheel shift controls- Pwr tilt/telescoping steering column
- Premium instrument cluster w/tachometer- 180-mph speedometer
- Vehicle information center- Pwr front windows w/1-touch up & down
- Pwr locking fuel filler door- Remote start system- Retained accessory pwr
- Universal garage door opener- Security alarm
- Automatic air cond w/dual-zone temp control - Air filtering- Rear window defroster
- Glove box lamp- Illuminated cup holders- Overhead console
- Dual visors w/illuminated vanity mirrors- Passenger assist handles
- Removable rechargeable interior lamp- Illuminated entry- Front & rear LED lamps
- Driver/front passenger lower LED lamps- Bright pedals- Carbon fiber interior accents
- Leather wrapped shift knob- Cargo compartment cover- Cargo tie-down loops
- Cargo trim panel w/storage net

Mechanical

- 5-speed automatic transmission -inc: sport mode- Pwr rack & pinion steering
- Performance tuned steering- 6.4L VVT V8 SRT HEMI MDS engine - 3.70 axle ratio
- Tip start- High speed engine controller- 700-amp maintenance free battery
- Quadra-Trac active on demand 4WD system- Engine oil cooler- HD engine cooling
- 220-amp alternator- 195mm front axle- 220mm rear axle
- Conventional differential front axle- Electronic limited slip differential rear axle
- Rear tow hook- SRT track experience- High performance suspension
- Active damping suspension- 6500lb GVWR- Anti-lock 4-wheel performance disc brakes
- Bright exhaust tip

Price excludes \$599.00 processing fee, registration fees and state and local sales taxes. 3% surcharge will be added on all CC charges over \$500.00. Deposits are non-refundable. All our sales are based on first-come-first-serve policy. We work very hard to accurately describe our vehicles through text descriptions and elaborate photos. When you purchase a pre-owned vehicle it is not a new vehicle. Any used vehicle can have normal wear and blemishes. Please read the descriptions thoroughly and view all pictures.

Leesburg Auto Import

Leesburg Auto Import

View this car on our website at leesburgautoimport.com/6653089

Website: leesburgautoimport.com

Phone: Toll Free: 1-866-249-5348, Local: 703-771-7600

Map: [2 Fairfax St SE, Leesburg, Virginia 20175](#)

