

tveauto.com  
972-242-5350  
1724 Luna Road  
Carrollton, TX  
75006

Texas Vehicle  
Exchange

## 2019 Jeep Wrangler JL Unlimited Sport 4X4 FMJ,DUPONT KEVLAR,LIFTED,LED'S

View this car on our website at [tveauto.com/6650497/ebrochure](http://tveauto.com/6650497/ebrochure)



Our Price **\$89,900**

### Specifications:

|               |   |
|---------------|---|
| Year:         | 2019  |
| VIN:          | 1C4HJXDG0KW595027   |
| Make:         | Jeep  |
| Stock:        | 595027  |
| Model/Trim:   | Wrangler JL Unlimited Sport 4X4<br>FMJ,DUPONT KEVLAR,LIFTED,LED'S |
| Condition:    | Pre-Owned   |
| Body:         | SUV   |
| Exterior:     | Tan   |
| Engine:       | ENGINE: 3.6L V6 24V VVT UPG I W/ESS                               |
| Interior:     | Black Leather   |
| Transmission: | TRANSMISSION: 8-SPEED AUTOMATIC<br>(850RE)                        |
| Mileage:      | 53  |
| Drivetrain:   | 4 Wheel Drive   |
| Economy:      | City 17 / Highway 23  |

NATION WIDE FINANCING

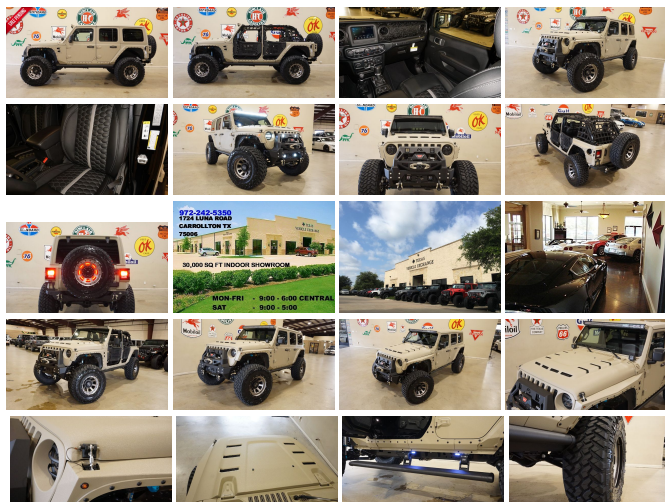
SUBMIT CREDIT APP [WWW.TVEAUTO.COM](http://WWW.TVEAUTO.COM)

OR CALL 972-242-5350

**"FULL METAL JACKET EDITION"**

CUSTOM BUILT **KEVLAR** 2019 JEEP  
WRANGLER JL UNLIMITED SPORT 4X4  
WITH 24S PACKAGE

UPGRADES INCLUDE:



## UPGRADES INCLUDE:

- \* GOBI TAN KEVLAR COATING
- \* CUSTOM ALEA BLACK LEATHER WITH SILVER STITCHING
- \* HEATED FRONT SEATS
- \* FACTORY REMOTE START
- \* CONVENIENCE GROUP
- \* FACTORY 7.0 INCH TOUCH SCREEN WITH AM/FM/SIRIUS STEREO & ALPINE PREMIUM AUDIO SYSTEM
- \* FACTORY BACK-UP CAMERA
- \* U-CONNECT
- \* 4 BODY ARMOR TRAIL DOORS & RECON MIRRORS
- \* FAB FOURS "FULL METAL JACKET" STUBBY WINCH BUMPER WITH MODIFIER
- \* 4 HEISE RGB LED D2 LIGHTS WITH BLUETOOTH APP CONTROL IN FRONT BUMPER
- \* FRONT D-RINGS & ISOLATORS (TAN)
- \* WARN ZEON 8-S WINCH WITH SYNTHETIC ROPE
- \* FACTORY 55 PROLINK (BLACK)
- \* QUAKE LED HEADLIGHTS
- \* RUGGED RIDGE BLACK HEADLIGHT GUARDS
- \* NEW RK SPORT RAM AIR VENTED HOOD
- \* DRAKE OFF ROAD HOOD LATCHES
- \* CUSTOM FITTED SMITTYBILT XRC SIDE BODY ARMOR & FENDERS
- \* DV8 OFF ROAD FRONT & REAR INNER FENDERS
- \* TERAFLX ST4 4.0" SUSPENSION LIFT KIT WITH KING OFF ROAD RACING SHOCKS & RESERVOIRS
- \* KING OFF ROAD RACING STABILIZER KIT

- \* KING OFF ROAD RACING STABILIZER KIT
- \* MOPAR AUXILIARY SWITCH BANK KIT
- \* HEISE RGB 50" LED LIGHT BAR & 2 HEISE RGB D2 LED PILLAR LIGHTS WITH BLUETOOTH APP CONTROL
- \* AMP RESEARCH POWER RUNNING BOARDS WITH LED LIGHT KIT
- \* RUGGED RIDGE SPARTACUS HD HINGE KIT
- \* TERAFLX ALPHA HD ADJUSTABLE SPARE TIRE ADAPTOR
- \* RUGGED RIDGE LED THIRD BRAKE LIGHT RING
- \* DIRTY DOG 4X4 5 PIECE NETTING KIT
- \* DV8 OFF ROAD REAR BUMPER
- \* REAR D-RINGS & ISOLATORS (TAN)
- \* MAGNAFLOW BLACK SERIES EXHAUST SYSTEM
- \* ALL WEATHER FLOOR MATS
- \* SUPERCHIPS FLASHCAL PROGRAMMER
- \* 20" KMC "XD137 FMJ" WHEELS
- \* BRAND NEW NITTO TRAIL GRAPPLER 38X13.50R/20 TIRES

WE BUILD EVERY JEEP WITH PRIDE! DO NOT HESITATE TO CALL US WITH THIS JEEP BUILD. WE CAN MAKE CHANGES TO THIS JEEP BUILD OR CUSTOM BUILD ANY JEEP TO YOUR PREFERENCE. GIVE US A CALL @ 972-242-5350 OR STOP BY FOR A TEST DRIVE. 1724 LUNA RD IN CARROLLTON - 2 MILES NORTH OF 635.

Our Location :



2019 Jeep Wrangler JL Unlimited Sport 4X4 FMJ,DUPONT KEVLAR,LIFTED,LED'S  
Texas Vehicle Exchange - 972-242-5350 - View this car on our website at [veauto.com/6650497/ebrochure](http://veauto.com/6650497/ebrochure)

Installed Options

Interior

- 6-Way Driver Seat -inc: Manual Recline, Height Adjustment, Fore/Aft Movement and Manual Lumbar Support
- Cloth Low-Back Bucket Seats
- Front Seats w/Cloth Back Material and Manual Driver Lumbar
- Full Carpet Floor Covering -inc: Carpet Front And Rear Floor Mats
- Gauges -inc: Speedometer, Odometer, Engine Coolant Temp, Tachometer, Engine Hour Meter, Trip Odometer and Trip Computer
- Manual Air Conditioning- Trip Computer- 2 12V DC Power Outlets
- 2 Seatback Storage Pockets
- 4-Way Passenger Seat -inc: Manual Recline and Fore/Aft Movement
- 60-40 Folding Split-Bench Front Facing Fold Forward Seatback Cloth Rear Seat
- Analog Display- Cargo Space Lights- Carpet Floor Trim, Carpet And Rubber Mat
- Compass- Cruise Control w/Steering Wheel Controls- Day-Night Rearview Mirror
- Delayed Accessory Power- Fade-To-Off Interior Lighting- Front And Rear Map Lights
- Front Center Armrest w/Storage
- Full Floor Console w/Locking Storage and 2 12V DC Power Outlets
- HVAC -inc: Console Ducts- Illuminated Front Cupholder- Illuminated Rear Cupholder
- Instrument Panel Bin, Dashboard Storage, Driver / Passenger And Rear Door Bins
- Interior Trim -inc: Metal-Look Instrument Panel Insert and Metal-Look Console Insert
- Locking Cargo Area Concealed Storage- Locking Glove Box
- Manual Adjustable Front Head Restraints and Foldable Rear Head Restraints
- Manual Tilt/Telescoping Steering Column- Outside Temp Gauge
- Proximity Key For Push Button Start Only - Redundant Digital Speedometer
- Removable 3rd Row Windows- Sentry Key Engine Immobilizer- Systems Monitor
- Urethane Gear Shift Knob- Vanity w/Driver And Passenger Auxiliary Mirror

Exterior

- Black Front Bumper w/2 Tow Hooks- Black Rear Bumper w/1 Tow Hook

Option Packages

Factory Installed Packages

ENGINE: 3.6L V6 24V VVT UPG I W/ESS

TRANSMISSION: 8-SPEED AUTOMATIC (850RE)  
-inc: TIP Start, Dana M200 Rear Axle, Hill Descent Control \$2,000

ALPINE PREMIUM AUDIO SYSTEM  
-inc: 220 Amp Alternator \$1,295

BLACK 3-PIECE HARD TOP  
-inc: Freedom Panel Storage Bag, Rear Window Defroster, Rear Window Wiper/Washer, No Soft Top \$1,195

CONVENIENCE GROUP  
-inc: Universal Garage Door Opener \$595

TECHNOLOGY GROUP  
-inc: Google Android Auto, Cluster 7.0" TFT Color Display, SiriusXM Satellite Radio, 1-Yr SiriusXM Radio Service, For More Info, Call 800-643-2112, USB Host Flip, Integrated Center Stack Radio, 7.0" Touchscreen Display, Air Conditioning w/Auto Temp Control, Radio: Uconnect 4 w/7" Display, Apple CarPlay, Air Filtering, GPS Antenna Input \$995

QUICK ORDER PACKAGE 24S SPORT S

- Manual Convertible Top w/Fixed Roll-Over Protection- Tires: 245/75R17 All Season
- Wheels: 17" x 7.5" Tech Silver Aluminum
- Aero-Composite Halogen Headlamps w/Delay-Off- Black Door Handles
- Black Fender Flares- Black Side Windows Trim- Body-Colored Grille- Clearcoat Paint
- Conventional Rear Cargo Access- Deep Tint Sunscreen Windows- Front Fog Lamps
- Full-Size Spare Tire Mounted Outside Rear
- Galvanized Steel/Aluminum/Magnesium Panels- Non-Lock Fuel Cap w/o Discriminator
- Removable Rear Window- Variable Intermittent Wipers

Safety

- 6-Way Driver Seat -inc: Manual Recline, Height Adjustment, Fore/Aft Movement and Manual Lumbar Support
- Cloth Low-Back Bucket Seats
- Front Seats w/Cloth Back Material and Manual Driver Lumbar
- Full Carpet Floor Covering -inc: Carpet Front And Rear Floor Mats
- Gauges -inc: Speedometer, Odometer, Engine Coolant Temp, Tachometer, Engine Hour Meter, Trip Odometer and Trip Computer
- Manual Air Conditioning- Trip Computer- 2 12V DC Power Outlets
- 2 Seatback Storage Pockets
- 4-Way Passenger Seat -inc: Manual Recline and Fore/Aft Movement
- 60-40 Folding Split-Bench Front Facing Fold Forward Seatback Cloth Rear Seat
- Analog Display- Cargo Space Lights- Carpet Floor Trim, Carpet And Rubber Mat
- Compass- Cruise Control w/Steering Wheel Controls- Day-Night Rearview Mirror
- Delayed Accessory Power- Fade-To-Off Interior Lighting- Front And Rear Map Lights
- Front Center Armrest w/Storage
- Full Floor Console w/Locking Storage and 2 12V DC Power Outlets
- HVAC -inc: Console Ducts- Illuminated Front Cupholder- Illuminated Rear Cupholder
- Instrument Panel Bin, Dashboard Storage, Driver / Passenger And Rear Door Bins
- Interior Trim -inc: Metal-Look Instrument Panel Insert and Metal-Look Console Insert
- Locking Cargo Area Concealed Storage- Locking Glove Box
- Manual Adjustable Front Head Restraints and Foldable Rear Head Restraints
- Manual Tilt/Telescoping Steering Column- Outside Temp Gauge
- Proximity Key For Push Button Start Only - Redundant Digital Speedometer
- Removable 3rd Row Windows- Sentry Key Engine Immobilizer - Systems Monitor
- Urethane Gear Shift Knob- Vanity w/Driver And Passenger Auxiliary Mirror

Mechanical

- Transmission: 6-Speed Manual- 1000lbs. Maximum Payload- 180 Amp Alternator
- 21.5 Gal. Fuel Tank- 3 Skid Plates- 3.45 Rear Axle Ratio
- 4-Wheel Disc Brakes w/4-Wheel ABS, Front Vented Discs, Brake Assist and Hill Hold Control
- 50 State Emissions- 650CCA Maintenance-Free Battery w/Run Down Protection
- Auto Locking Hubs- Brake Actuated Limited Slip Differential
- Electro-Hydraulic Power Assist Steering- Engine Auto Stop-Start Feature
- Engine Oil Cooler- Engine: 3.6L V6 24V VVT UPG I w/ESS
- Front And Rear Anti-Roll Bars- GVWR: 5,300 lbs- Gas-Pressurized Shock Absorbers
- Leading Link Front Suspension w/Coil Springs- Manual Transfer Case
- Normal Duty Suspension- Part-Time Four-Wheel Drive- Single Stainless Steel Exhaust
- Towing Equipment -inc: Trailer Sway Control
- Trailing Arm Rear Suspension w/Coil Springs

-inc: Engine: 3.6L V6 24V VVT UPG I w/ESS,  
Transmission: 8-Speed Automatic (850RE), Front  
1-Touch Down Power Windows, Speed Sensitive  
Power Locks, Power Heated Mirrors, Automatic  
Headlamps, Leather Wrapped Steering Wheel,  
Security Alarm, Remote Keyless Entry, Sun  
Visors w/Illuminated Vanity Mirrors

\$3,200

Option Packages Total

\$9,280

Texas Vehicle Exchange

tveauto.com

972-242-5350

1724 Luna Road

Carrollton, TX 75006

© 2024 AutoRevo - All rights reserved. - Powered by AutoRevo