



2007 Mercedes-Benz E350 3.5L

NO HAGGLE CASH PRICE! \$6,997

Average Retail Price \$9,562

View this vehicle on our website at sterlingmotorsport.com

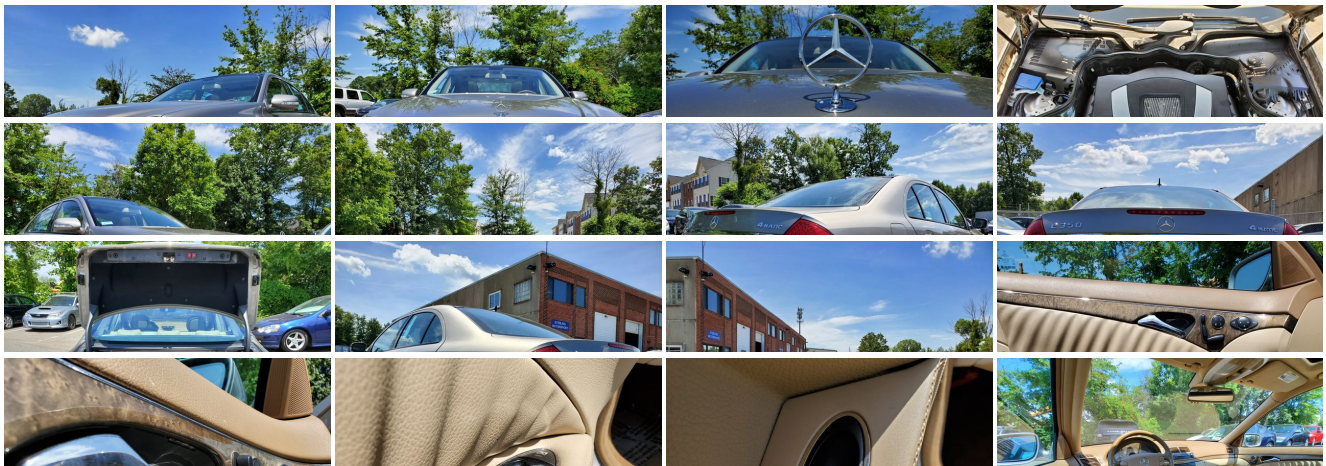
[571-313-1989](tel:571-313-1989)

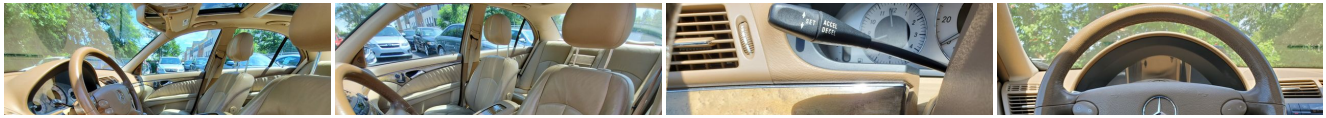
9 Douglas Court Unit 101 , Sterling, VA 20166

Photos

Details

Contact





Specifications:

Year:	2007
VIN:	WDBUF87X27X217521
Make:	Mercedes-Benz
Stock:	217521
Model/Trim:	E350 3.5L
Condition:	Pre-Owned
Body:	Sedan
Exterior:	SILVER
Engine:	3.5L DOHC SFI 24-valve V6 engine
Mileage:	84,661
Drivetrain:	All Wheel Drive
Economy:	City 18 / Highway 24

Vehicle Description

Installed Options

Interior

- M-B Tex upholstery- Hand-polished Burl Walnut wood trim- 12V pwr outlet
- Leather-trimmed steering wheel w/audio/multifunction display controls
- Pwr door locks w/drive away locking
- SmartKey infrared-remote-inc: trunk unlock, opening/closing windows/sunroof, panic alarm, fuel filler door, lock/unlock all doors or drivers
- AM/FM/weatherband stereo w/integrated single-feed 6-disc CD changer, fiber- optic communication among components
- Cargo area 12V pwr outlet
- 10-way pwr front seats w/3-position memory, adjustable lumbar support, pwr- adjustable active head restraints
- Center console-inc: wood-trimmed rolltop cover, enclosed storage, removable dual front cupholders
- 4-way pwr tilt/telescoping steering column w/memory, programmable easy-exit feature
- COMAND cockpit management/data system-inc: large color-LCD screen, (10) soft key, controls for AM/FM/weatherband radio, CD changer
- Multifunction display in instrument cluster-inc: trip computer, exterior temp gauge, digital speedometer, audio status, reminder/malfunction indicator, driver-programmable settings, resettable trip meter
- Black gauges w/white markings
- Instrumentation-inc: fuel/coolant temp electronic bar-graph, tachometer, digital touch shift/mode selection display, quartz clock
- Audible reminders & message-inc: open door, exterior lamp failure, headlamps on, parking brake on, low fuel/oil/coolant/washer fluid, remove ignition key
- Mercedes-Benz Maintenance System Plus display
- Pwr windows w/1-touch express down/up- Cruise control
- Tele Aid GPS stolen vehicle recovery system w/remote door unlock, automatic collision notification alert
- HomeLink compatible universal garage door opener
- Touch turn signals (flashes (3) times w/1-touch)
- Automatic dual-zone climate control-inc: electrostatic dust/pollen filter, humidity/dewpoint sensors, tunnel mode w/(1) touch closing of all windows/ sunroof
- Electrically heated rear window w/auto shut off based on time/exterior temp
- Harman/kardon Logic7 digital surround sound system-inc: (12) speakers, 7.1 channel amplifier, multichannel digital surround sound technology, digital dynamic volume control
- Audio auxiliary input jack in glovebox - Auto-dimming rearview mirror
- Illuminated entry system w/locator lighting- Night security illumination
- Leather-trimmed shift knob- Folding rear armrest w/enclosed storage, dual cup holders

Exterior

- Pwr tilt/sliding tinted glass sunroof w/1-touch express open/close, memory
- Programmable daytime running lamps
- Atlas grey grille w/(4) chrome ribs, chrome surround
- Variable-focus halogen headlamps-inc: projector low beams, selectable light- sensing headlamps, automatic lamp substitution
- Front halogen foglamps- Single red rear foglamp
- Dual auto heated pwr mirrors-inc: memory, integrated turn signals, auto- dimming driver mirror
- Neutral-tinted glass
- Rain-sensing windshield wipers w/heated windshield washer reservoir

Safety

- M-B Tex upholstery- Hand-polished Burl Walnut wood trim- 12V pwr outlet
- Leather-trimmed steering wheel w/audio/multifunction display controls
- Pwr door locks w/drive away locking
- SmartKey infrared-remote-inc: trunk unlock, opening/closing windows/sunroof, panic alarm, fuel filler door, lock/unlock all doors or drivers
- AM/FM/weatherband stereo w/integrated single-feed 6-disc CD changer, fiber- optic communication among components
- Cargo area 12V pwr outlet
- 10-way pwr front seats w/3-position memory, adjustable lumbar support, pwr- adjustable active head restraints
- Center console-inc: wood-trimmed rolltop cover, enclosed storage, removable dual front cupholders
- 4-way pwr tilt/telescoping steering column w/memory, programmable easy-exit feature
- COMAND cockpit management/data system-inc: large color-LCD screen, (10) soft key, controls for AM/FM/weatherband radio, CD changer
- Multifunction display in instrument cluster-inc: trip computer, exterior temp gauge, digital speedometer, audio status, reminder/malfunction indicator, driver-programmable settings, resettable trip meter
- Black gauges w/white markings
- Instrumentation-inc: fuel/coolant temp electronic bar-graph, tachometer, digital touch shift/mode selection display, quartz clock
- Audible reminders & message-inc: open door, exterior lamp failure, headlamps on, parking brake on, low fuel/oil/coolant/washer fluid, remove ignition key
- Mercedes-Benz Maintenance System Plus display
- Pwr windows w/1-touch express down/up- Cruise control
- Tele Aid GPS stolen vehicle recovery system w/remote door unlock, automatic collision notification alert
- HomeLink compatible universal garage door opener
- Touch turn signals (flashes (3) times w/1-touch)
- Automatic dual-zone climate control-inc: electrostatic dust/pollen filter, humidity/dewpoint sensors, tunnel mode w/(1) touch closing of all windows/ sunroof
- Electrically heated rear window w/auto shut off based on time/exterior temp
- Harman/kardon Logic7 digital surround sound system-inc: (12) speakers, 7.1 channel amplifier, multichannel digital surround sound technology, digital dynamic volume control
- Audio auxiliary input jack in glovebox- Auto-dimming rearview mirror
- Illuminated entry system w/locator lighting- Night security illumination
- Leather-trimmed shift knob- Folding rear armrest w/enclosed storage, dual cup holders

Mechanical

- Electronic stability program (ESP)- 4-wheel electronic traction system (4-ETS)
- 17" x 8.0" 7-spoke aluminum wheels - 4-wheel ventilated pwr disc brakes
- 4-wheel anti-lock disc brakes system (ABS) w/brake assist system
- 3.5L DOHC SFI 24-valve V6 engine
- 5-speed automatic driver-adaptive transmission-inc: Touch Shift, optimum gear programming, comfort mode, electronically controlled shifting
- 4MATIC permanent all wheel drive
- Independent double wishbone front/5-arm multilink rear suspension
- Front/rear stabilizer bars, gas shock absorbers, coil springs
- 245/45R17 all-season performance tires
- Vehicle-speed-sensitive pwr rack & pinion steering

Price excludes \$699.00 processing fee, registration fees and State and Local sales taxes. 3% surcharge will be added on all CC charges over \$500.00. Deposits are non-refundable. All our sales are based on first-come-first-serve policy. We work very hard to accurately describe our vehicles through text descriptions and elaborate photos. When you purchase a pre-owned vehicle it is not a new vehicle. Any used vehicle can have normal wear and blemishes. Please read the descriptions thoroughly and view all pictures.

Sterling Motorsport

Sterling Motorsport

View this car on our website at sterlingmotorsport.com/6645880

Website: sterlingmotorsport.com

Phone: [571-313-1989](tel:571-313-1989)

Map: [9 Douglas Court Unit 101, Sterling, VA 20166](#)

