



2015 Subaru WRX STI Limited

Our No-Haggle Price \$27,995

Book Retail Value ~~\$29,998~~

View this vehicle on our website at leesburgautoimport.com

Leesburg Auto Import

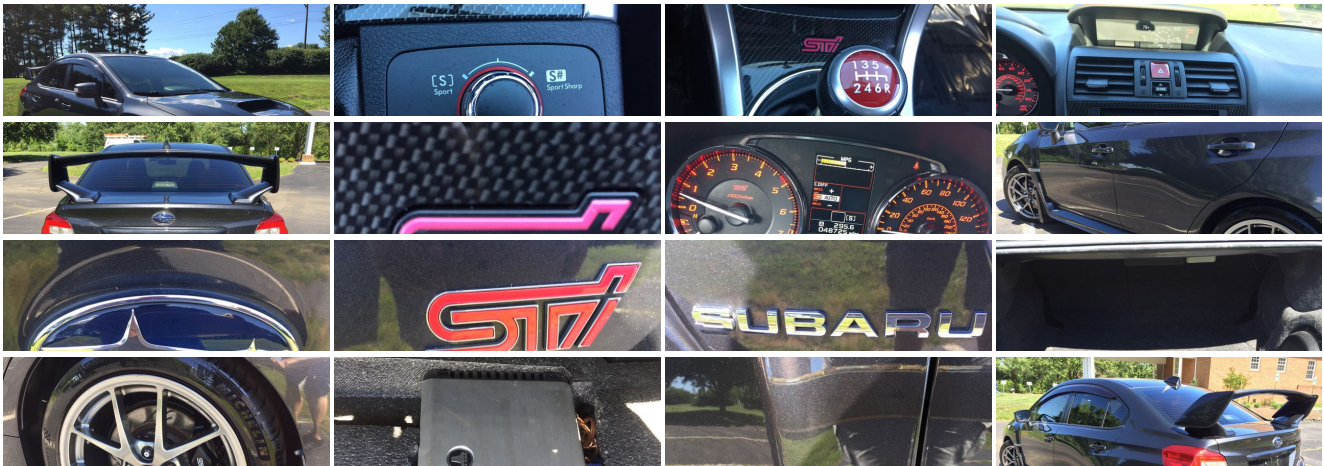
Toll Free: 1-866-249-5348, Local: 703-771-7600

2 Fairfax St SE , Leesburg, Virginia 20175

Photos

Details

Contact





Specifications:

Year:	2015
VIN:	JF1VA2S67F9815385
Make:	Subaru
Stock:	L815385
Model/Trim:	WRX STI Limited
Condition:	Pre-Owned
Body:	Sedan
Exterior:	GRAY
Engine:	Engine: 2.5L DOHC Intercooled High Boost DAVCS -inc: Turbocharged, variable valve timing, Electronic Throttle Control (ETC), and SI-DRIVE engine performance management
Interior:	Leather
Mileage:	48,714
Drivetrain:	All Wheel Drive
Economy:	City 17 / Highway 23

Vehicle Description

Installed Options

Interior

- Performance Design Front Heated Bucket Seats -inc: 8-way power height adjustable driver's seat, height and tilt adjustable head restraints w/embossed STI logo, and front seatback pockets
- 2-Way Power Driver Seat -inc: Power Cushion Tilt
- Gauges -inc: Speedometer, Odometer, Engine Coolant Temp, Tachometer, Turbo/Supercharger Boost, Trip Odometer and Trip Computer
- Power Rear Windows
- Remote Keyless Entry w/Integrated Key Transmitter, Illuminated Entry, Illuminated Ignition Switch and Panic Button
- Leather Upholstery- Full Carpet Floor Covering -inc: Carpet Front And Rear Floor Mats
- Power 1st Row Windows w/Driver 1-Touch Up/Down- Power Door Locks
- Trip Computer- Seats w/Leatherette Back Material- Perimeter Alarm
- 4-Way Passenger Seat -inc: Manual Recline and Fore/Aft Movement
- 60-40 Folding Bench Front Facing Fold Forward Seatback Rear Seat
- Manual Tilt/Telescoping Steering Column- Sport Leather/Metal-Look Steering Wheel
- Front Cupholder- Rear Cupholder- Valet Function
- Remote Releases -Inc: Power Cargo Access and Mechanical Fuel
- Cruise Control w/Steering Wheel Controls- Dual Zone Front Automatic Air Conditioning
- HVAC -inc: Underseat Ducts- Illuminated Locking Glove Box- Driver Foot Rest
- Interior Trim -inc: Simulated Carbon Fiber Instrument Panel Insert, Metal-Look Door Panel Insert, Simulated Carbon Fiber/Metal-Look Console Insert and Chrome/Aluminum Interior Accents
- Full Cloth Headliner- Leatherette Door Trim Insert- Leather Gear Shift Knob
- Day-Night Rearview Mirror
- Driver And Passenger Visor Vanity Mirrors w/Driver And Passenger Illumination
- Full Floor Console w/Covered Storage and 2 12V DC Power Outlets - Front Map Lights
- Fade-To-Off Interior Lighting
- Carpet Floor Trim and Carpet Trunk Lid/Rear Cargo Door Trim
- Cargo Area Concealed Storage- Cargo Space Lights
- FOB Controls -inc: Trunk/Hatch/Tailgate
- Instrument Panel Bin, Driver / Passenger And Rear Door Bins- Systems Monitor
- Outside Temp Gauge- Analog Display- Manual Adjustable Rear Head Restraints
- Front Center Armrest and Rear Center Armrest- Engine Immobilizer
- 2 12V DC Power Outlets- Air Filtration

Exterior

- Wheels: 18" x 8.5J BBS Brand w/High Luster Silver -inc: Forged aluminum alloy
- Tires: P245/40R18 97W Summer Performance- Steel Spare Wheel
- Compact Spare Tire Mounted Inside Under Cargo- Clearcoat Paint
- Express Open/Close Sliding And Tilting Glass 1st Row Sunroof w/Sunshade
- Body-Colored Front Bumper- Body-Colored Rear Bumper- Rocker Panel Extensions
- Black Side Windows Trim and Black Front Windshield Trim
- Body-Colored Door Handles
- Body-Colored Power Heated Side Mirrors w/Manual Folding and Turn Signal Indicator
- Fixed Rear Window w/Defroster- Light Tinted Glass
- Variable Intermittent Wipers w/Heated Wiper Park
- Front Windshield -inc: Sun Visor Strip- Galvanized Steel/Aluminum Panels
- Wing Spoiler- Black Grille- Front License Plate Bracket- Trunk Rear Cargo Access
- Front Fog Lamps- LED Brakelights
- Fully Automatic Projector Beam Led Low Beam Daytime Running Auto-Leveling Headlamps w/Delay-Off
- Perimeter/Approach Lights

Safety

- Performance Design Front Heated Bucket Seats -inc: 8-way power height adjustable driver's seat, height and tilt adjustable head restraints w/embossed STI logo, and front seatback pockets
- 2-Way Power Driver Seat -inc: Power Cushion Tilt
- Gauges -inc: Speedometer, Odometer, Engine Coolant Temp, Tachometer, Turbo/Supercharger Boost, Trip Odometer and Trip Computer
- Power Rear Windows
- Remote Keyless Entry w/Integrated Key Transmitter, Illuminated Entry, Illuminated Ignition Switch and Panic Button
- Leather Upholstery- Full Carpet Floor Covering -inc: Carpet Front And Rear Floor Mats
- Power 1st Row Windows w/Driver 1-Touch Up/Down- Power Door Locks
- Trip Computer- Seats w/Leatherette Back Material- Perimeter Alarm
- 4-Way Passenger Seat -inc: Manual Recline and Fore/Aft Movement
- 60-40 Folding Bench Front Facing Fold Forward Seatback Rear Seat
- Manual Tilt/Telescoping Steering Column- Sport Leather/Metal-Look Steering Wheel
- Front Cupholder- Rear Cupholder- Valet Function
- Remote Releases -Inc: Power Cargo Access and Mechanical Fuel
- Cruise Control w/Steering Wheel Controls- Dual Zone Front Automatic Air Conditioning
- HVAC -inc: Underseat Ducts- Illuminated Locking Glove Box- Driver Foot Rest
- Interior Trim -inc: Simulated Carbon Fiber Instrument Panel Insert, Metal-Look Door Panel Insert, Simulated Carbon Fiber/Metal-Look Console Insert and Chrome/Aluminum Interior Accents
- Full Cloth Headliner- Leatherette Door Trim Insert- Leather Gear Shift Knob
- Day-Night Rearview Mirror
- Driver And Passenger Visor Vanity Mirrors w/Driver And Passenger Illumination
- Full Floor Console w/Covered Storage and 2 12V DC Power Outlets - Front Map Lights
- Fade-To-Off Interior Lighting
- Carpet Floor Trim and Carpet Trunk Lid/Rear Cargo Door Trim
- Cargo Area Concealed Storage- Cargo Space Lights
- FOB Controls -inc: Trunk/Hatch/Tailgate
- Instrument Panel Bin, Driver / Passenger And Rear Door Bins - Systems Monitor
- Outside Temp Gauge- Analog Display- Manual Adjustable Rear Head Restraints
- Front Center Armrest and Rear Center Armrest- Engine Immobilizer
- 2 12V DC Power Outlets- Air Filtration

Mechanical

- Engine: 2.5L DOHC Intercooled High Boost DAVCS -inc: Turbocharged, variable valve timing, Electronic Throttle Control (ETC), and SI-DRIVE engine performance management
- Transmission: 6-Speed Close-Ratio Manual- Full-Time All-Wheel Drive- 3.90 Axle Ratio
- Engine Oil Cooler- 48-Amp/Hr Maintenance-Free Battery- 110 Amp Alternator
- Gas-Pressurized Shock Absorbers- Front And Rear Anti-Roll Bars
- Sport Tuned Suspension- Hydraulic Power-Assist Speed-Sensing Steering
- 15.9 Gal. Fuel Tank- Quasi-Dual Stainless Steel Exhaust w/Polished Tailpipe Finisher
- Strut Front Suspension w/Coil Springs
- Double Wishbone Rear Suspension w/Coil Springs
- 4-Wheel Disc Brakes w/4-Wheel ABS, Front And Rear Vented Discs, Brake Assist and Hill Hold Control
- Mechanical Limited Slip Differential

Price excludes \$599.00 processing fee, registration fees and state and local sales taxes. 3% surcharge will be added on all CC charges over \$500.00. Deposits are non-refundable. All our sales are based on first-come-first-serve policy. We work very hard to accurately describe our vehicles through text descriptions and elaborate photos. When you purchase a

pre-owned vehicle it is not a new vehicle. Any used vehicle can have normal wear and blemishes. Please read the descriptions thoroughly and view all pictures.

Leesburg Auto Import

Leesburg Auto Import

View this car on our website at leesburgautoimport.com/6644479

Website: leesburgautoimport.com

Phone: Toll Free: 1-866-249-5348, Local: 703-771-7600

Map: 2 Fairfax St SE, Leesburg, Virginia 20175

