



## 2001 Dodge Ram 2500 SLT

**Our Price \$7,999**

View this vehicle on our website at [randyadamsinc.com](http://randyadamsinc.com)

(830) 625-7159

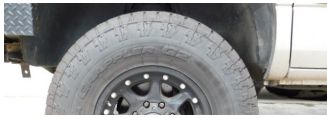
1687 Business Loop 35 S, New Braunfels, TX 78130

Photos

Details

Contact





## Specifications:

<b>Year:</b>	2001
<b>VIN:</b>	<a href="#">1B7KF23671J194377</a>
<b>Make:</b>	Dodge
<b>Stock:</b>	194377
<b>Model/Trim:</b>	Ram 2500 SLT
<b>Condition:</b>	Pre-Owned
<b>Body:</b>	Pickup Truck
<b>Exterior:</b>	Bright Silver Metallic
<b>Engine:</b>	5.9L (359) 24-VALVE I6 CUMMINS DIESEL ENGINE
<b>Interior:</b>	Agate Cloth
<b>Mileage:</b>	330,923
<b>Drivetrain:</b>	4 Wheel Drive

## Vehicle Description

Thank you for looking at another one of Randy Adams Inc.'s on-line listings!

Please find out more about this vehicle below:

2001 DODGE RAM 2500 SLT 4X4

- 5.9L I6 CUMMINS TURBO DIESEL ENGINE
- AUTOMATIC/AC
- TILT WHEEL/CRUISE CONTROL
- AM/FM STEREO
- POWER WINDOWS, LOCKS, MIRRORS
- TRAILER PACKAGE
- AND MORE

Randy Adams Inc. offers only the very best used cars, trucks, and SUVs in the New Braunfels area. Give us a call at 830-625-7159, email [sales@randyadamsinc.com](mailto:sales@randyadamsinc.com), or stop by and visit us at 1687 Business Loop 35 S, New Braunfels, TX 78130.

Prices do not include Tax, Title, License, Inspection and Documentation Fee.

It is the customer's sole responsibility to verify the existence and condition of any equipment listed. Neither the dealership nor AutoRevo is responsible for misprints on prices or equipment. It is the customer's sole responsibility to verify the accuracy of the prices with the dealer. Pricing subject to change without notice.

## Installed Options

### Interior

- Electronic AM/FM stereo radio w/cassette
- HD vinyl 40/20/40 double split-back bench seats w/rear flip-type bench seat
- 2-spoke steering wheel- Black vinyl floor covering- Cab-back panel stowage
- Cargo lamp- Cigar lighter/pwr outlet- Color-keyed full length door trim panels w/armrests
- Dash insulation liner- Day/night rearview mirror- Dual-opening retractable cup holder
- Hood release in cab- Instrument cluster-inc: 120 MPH speedometer, tachometer
- Passenger assist handle

### Exterior

- Bright front bumper- Bright grille- Bright rear bumper w/step pads
- Cargo light integral w/stop lamp
- Corrosion resistant zinc-coated galvanized steel w/anti-chip coating
- Dual black manual 6" x 9" exterior mirrors - Dual rear hinged access doors
- Halogen headlamps- Removable tailgate w/color-keyed "Dodge" decal- Tinted glass
- Variable speed intermittent windshield wipers

### Safety

- Electronic AM/FM stereo radio w/cassette
- HD vinyl 40/20/40 double split-back bench seats w/rear flip-type bench seat
- 2-spoke steering wheel- Black vinyl floor covering- Cab-back panel stowage
- Cargo lamp- Cigar lighter/pwr outlet- Color-keyed full length door trim panels w/armrests
- Dash insulation liner- Day/night rearview mirror- Dual-opening retractable cup holder
- Hood release in cab- Instrument cluster-inc: 120 MPH speedometer, tachometer
- Passenger assist handle

### Mechanical

- (5) 16" x 7.5" steel wheels - 5-speed manual transmission w/OD
- 5.9L (360) SMPI V8 engine- LT245/75R16E all-season SBR BSW tires
- Pwr 4-wheel anti-lock disc brakes- (4) bright trim rings/hub center- 117-amp alternator
- 3.54 axle ratio- 34 gallon fuel tank
- 6.5' pickup box-inc: dual wall construction, one-piece high strength steel floor, 2-tier loading capability, bulkhead dividing provision, tie down loops
- 600-amp maintenance-free battery
- 8800# GVWR (5200 front/6200 rear), springs (5200 front/6200 rear), axles (5200 front/6200 rear)
- Conventional spare tire w/winch type carrier- Four wheel drive- Front stabilizer bar
- HD front/rear shock absorbers
- NV241 2-speed transfer case w/shift-on-the-fly auto hubs
- Solid front axle w/link-coil suspension- Solid rear axle w/longitudinal leaf springs
- Variable assist pwr steering

## Option Packages

### Factory Installed Packages

#### 5.9L (359) 24-VALVE I6 CUMMINS DIESEL ENGINE

- inc: HD service group, diesel message center (w/low fuel/low oil/water in fuel/wait to start/brakes/anti-lock brakes warning lights),"Cummins Diesel" nameplates, diesel sound insulation on inner dash/cowl/floor pads, engine block heater

### Option Packages Total

\$4,625

Purchase prices do not include taxes, title, license, inspection or doc fee. It is the customer's sole responsibility to verify the accuracy of the price and existence and condition of any equipment listed. Dealer is not responsible for any typographical, technical or misprint errors on prices or equipment. This site and all information and materials appearing on it, are presented to the user "as is" without warranty of any kind, either express or implied. Mileage posted may vary slightly due to local test driving, in-transit repairs or road testing. Pricing subject to change without notice. All vehicles are subject to prior sale.



Randy Adams Inc.

View this car on our website at [randyadamsinc.com/6644206](http://randyadamsinc.com/6644206)

Website: [randyadamsinc.com](http://randyadamsinc.com)

Phone: (830) 625-7159

Map: [1687 Business Loop 35 S, New Braunfels, TX 78130](#)

