

2010 Dodge Ram 1500 SLT

Jonny Walker 928-303-8552

View this car on our website at 66autosales.com/6643309/ebrochure



66 Auto Sales Price **\$16,966**

Specifications:

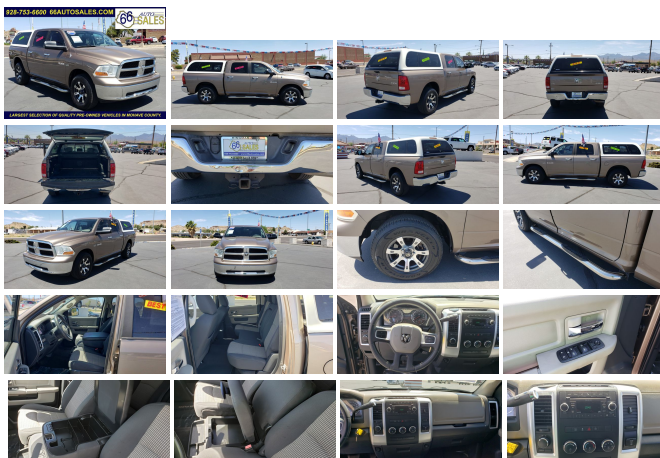
Year:	2010
VIN:	1D7RV1CT8AS217070
Make:	Dodge
Stock:	16850
Model/Trim:	Ram 1500 SLT
Condition:	Pre-Owned
Body:	Pickup Truck
Exterior:	Brown
Engine:	5.7L V8 HEMI MULTI-DISPLACEMENT VVT ENGINE
Interior:	Black
Transmission:	5-SPEED AUTOMATIC TRANSMISSION
Mileage:	115,137
Drivetrain:	4 Wheel Drive
Economy:	City 13 / Highway 18

4X4 Truck under 20 Grand!! This incredibly clean Dodge Ram with a 5.7 Liter V8 is capable of towing 8,000+ pounds. It has an awesome camper shell on it (optional) and is in great mechanical and cosmetic shape! Come take a look at it today! Want to schedule a test drive? Click the link above or call Jonny Walker at 9287536600.

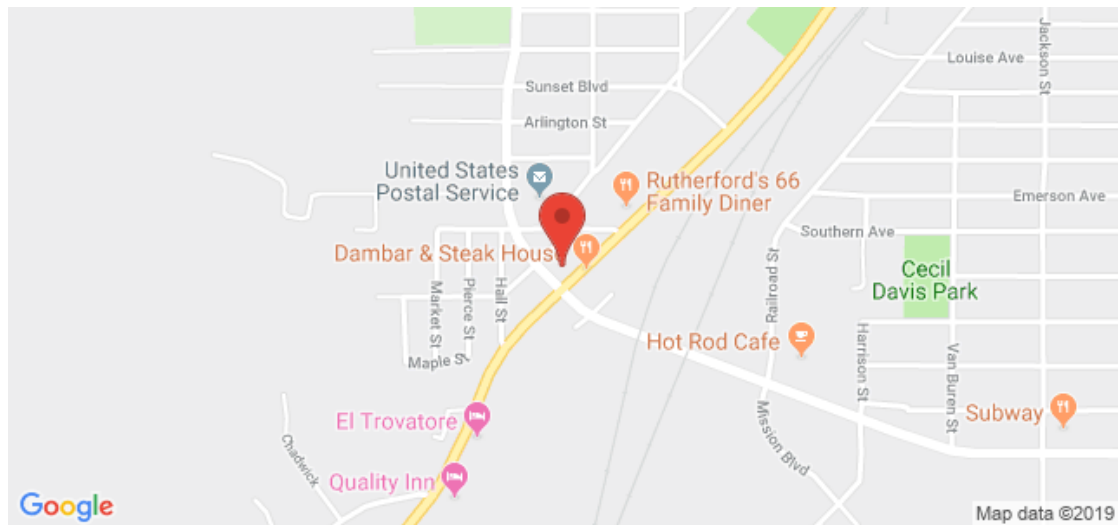
*****INTERNET SHOPPERS: ASK FOR OUR INTERNET SALESMAN JONNY WALKER TO ASSIST YOU WHEN YOU CALL OR ARRIVE TO THE LOT AND BECOME ELIGIBLE FOR ADDITIONAL INCENTIVES AT TIME OF PURCHASE!!

BROWSE MORE INFORMATION ABOUT OUR INVENTORY AT THE 66 AUTO SALES HOME WEBSITE:

WWW.66AUTOSALES.COM!!



Our Location :



2010 Dodge Ram 1500 SLT

66 Auto Sales - 928-303-8552 - View this car on our website at 66autosales.com/6643309/ebrochure

Installed Options

Interior

- 12V aux pwr outlet- Air conditioning- Carpeted floor covering- Chrome accent shift knob
- Cloth 40/20/40 bench seat w/manual adjusters- Color-keyed instrument panel bezel
- Column-mounted shifter- Cruise control- Day/night rearview mirror- Dome lamp
- Dual assist handles- Dual note horn- Floor tunnel insulation- Folding rear bench seat
- Front/rear floor mats
- Instrument cluster w/display screen -inc: temp & compass gauge, trip computer, vehicle info center
- Overhead console w/reading lamps- Passenger side visor vanity mirror
- Premium vinyl door trim w/map pocket- Pwr accessory delay- Pwr door locks
- Pwr front windows w/1-touch up/down- Rear under seat storage compartment
- Remote keyless entry- Sentry Key theft deterrent system- Tilt steering column

Exterior

- (4) full-size conventional doors- 17" steel spare wheel- 17" x 7" aluminum wheels
- Automatic headlamps- Black folding pwr heated outside mirrors
- Body color fuel filler door- Body-color upper front fascia- Body-color/chrome door handles
- Bright front bumper- Bright grille- Bright rear bumper- Cargo lamp- Deep tinted windows
- Front license plate bracket- Front wheel air deflectors- Full-size spare tire
- Halogen headlamps- Locking tailgate- P265/70R17 all-season BSW tires
- Pwr sliding rear window- Rear wheel air deflectors- Tire carrier winch
- Variable intermittent windshield wipers

Safety

- 12V aux pwr outlet- Air conditioning- Carpeted floor covering- Chrome accent shift knob
- Cloth 40/20/40 bench seat w/manual adjusters- Color-keyed instrument panel bezel
- Column-mounted shifter- Cruise control- Day/night rearview mirror- Dome lamp
- Dual assist handles- Dual note horn- Floor tunnel insulation- Folding rear bench seat
- Front/rear floor mats

- Front/rear floor mats
- Instrument cluster w/display screen -inc: temp & compass gauge, trip computer, vehicle info center
- Overhead console w/reading lamps- Passenger side visor vanity mirror
- Premium vinyl door trim w/map pocket- Pwr accessory delay- Pwr door locks
- Pwr front windows w/1-touch up/down- Rear under seat storage compartment
- Remote keyless entry- Sentry Key theft deterrent system - Tilt steering column

Mechanical

- 160-amp alternator- 4.7L V8 flex-fuel engine (REQ: NAS 50-State Emissions)
- 5-speed automatic transmission- 6800# GVWR- 7 pin wiring harness
- 700-amp maintenance-free battery- Anti-lock 4-wheel disc brakes
- Corporate 9.25 rear axle- Electronic shift-on-the-fly part-time transfer case
- Four wheel drive- Front stabilizer bar- HD engine cooling- HD front shock absorbers
- HD rear shock absorbers- HD transmission oil cooler- Multi-link coil rear suspension
- Next generation engine controller- Pwr rack & pinion steering- Rear stabilizer bar
- Tip start electronic starting feature- Trailer tow w/4-pin connector wiring

Option Packages

Factory Installed Packages

5.7L V8 HEMI MULTI-DISPLACEMENT
VVT ENGINE
-inc: electronically controlled throttle \$1,310

5-SPEED AUTOMATIC TRANSMISSION

3.55 AXLE RATIO

RUGGED BROWN PEARL

Option Packages Total
\$1,310

*Not all buyers will qualify for posted rate. Please consult with our Internet Department to qualify your rate.

66 Auto Sales

66autosales.com

928-303-8552

1945 E Andy Devine

Kingman, Arizona 86401

© 2019 AutoRevo - All rights reserved. - Powered by AutoRevo