



## 2015 Harley-Davidson® FLSTC - Heritage Softail® Classic

View this vehicle on our website at [northshoreharley-davidson.com](http://northshoreharley-davidson.com)

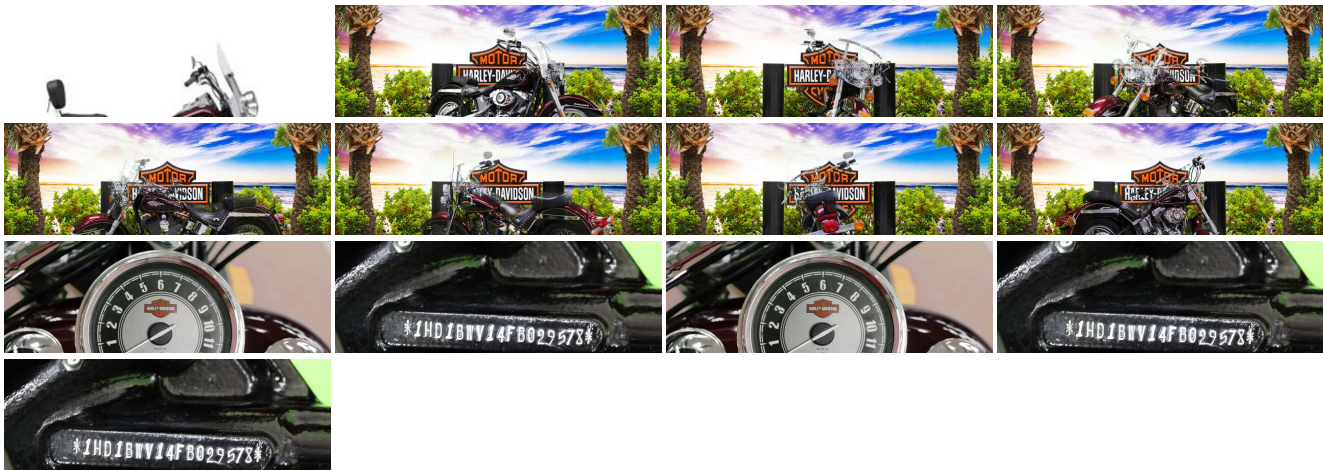
985-641-5100

791 W I-10 Service Rd, Slidell, LA 70458

Photos

Details

Contact



### Specifications:

Year:	2015
VIN:	1HD1BWV14FB029578
Make:	Harley-Davidson®
Stock:	29578
Model/Trim:	FLSTC - Heritage Softail® Classic
Condition:	Pre-Owned

<b>Engine:</b>	1689 cc V Twin
<b>Exterior:</b>	MYS RED/CAYENNE W/ PINS
<b>Transmission:</b>	6 Speed Manual Six-Speed Cruise Drive®
<b>Mileage:</b>	0

## Vehicle Description

### 2015 Harley-Davidson® Heritage Softail® Classic

Blazing from the past with original dresser spirit and modern touring capabilities.

Features May Include:

- Hidden Rear Shocks

If you want a comfortable bike but love that rigid-suspension look, you've come to the right bike. We've kept all the modern comforts where they belong—below the surface of a rad, vintage-looking bike. You get the classic lines of a vintage hardtail frame with the horizontal rear shocks hidden in the guts. It's a signature rigid look, and you'll only find it on a Softail® model.

- Nostalgic Custom Style

Do laced wheels, whitewalls and studded leather add to the way a bike feels on the road? Of course they do. It's these extras that make the Heritage Softail® Classic model the quintessential boulevard cruiser. As rallies were gaining grassroots traction in the '40s, you'd roll into Daytona Bike Week expecting new stories and new styles. There was really something going on, and it's still alive and well in this bike. Take the saddlebags, studded with style straight from that golden era, with hidden quick-detach buckles. Or the fenders—full and fluid, with chrome highlights and matching paint. Or that big, commanding 7-inch ball headlamp, chromed and classy. And let's talk wheels. You can go with the standard steel-laced wheels on blackwalls with a chrome hub. Or turn the clock all the way back with the optional chrome laces and wide whitewalls.

- Old-School Tank and 3-D Medallion

The unique medallion on the Heritage Softail® Classic motorcycle is glass-inlayed, cloisonné-and-chrome style and shows that Harley-Davidson® Softail® model heritage that runs in your blood. With a five-gallon capacity for long weekend cruising, we top off this tank with a nostalgic chrome cats-eye console, paint for days and style to spare.

- Tank-Mounted Console

The speedometer face boasts a big, bold display for the odometer, along with an ancillary display for gear and rpm, offering up the information you need on the fly.

- Tombstone Taillight

A vintage classic. The chrome, low profile taillight housing lays back against the fender but shines with Harley-Davidson history. Flanked by our sleek silver bullet turn signals, that glowing red gravestone is the last thing they'll see as you pull away into the night.

- Whitewall Tires

One of the defining styling features of the Softail® Deluxe model is the nostalgic wide whitewall tires with premium laced wheels. A nod to the '50s boulevard look, these fat rubber rollers are just the right throwback detail from Harley-Davidson that ups the ante in any scene. Total old-school styling without sacrificing handling or performance.

- Hard Candy Custom™ Paint

Hard Candy Custom™ is a large metal flake finish that's more than just paint job, it's a shining declaration of independence—bright, bold and unique. The Softail Deluxe is available in Hard Candy Cancun Blue Flake. Recalling the iconic rebel styling of '70s custom bikes, Hard Candy Custom marks another milestone in The Motor Company's legacy of innovation. We start with several passes of 200 micron flake over a silver base, then clear coat it, hand-lay and mask the pattern and apply the Candy color to allow the flake to shine through. Then more clear coat and hand striping to a deep smooth finish. It's a painstaking process that delivers a premium custom look straight from the factory, so you can start flying your colors with no waiting, no stripping or extra effort.

### Installed Options

Mike Bruno's Northshore Harley-Davidson

View this car on our website at [northshoreharley-davidson.com/6642981](http://northshoreharley-davidson.com/6642981)

Website: [northshoreharley-davidson.com](http://northshoreharley-davidson.com)

Phone: [985-641-5100](tel:985-641-5100)

Map: [791 W I-10 Service Rd, Slidell, LA 70458](#)

