



2011 FORD F150 XLT / Lifted with many upgrades

Our No-Haggle Price \$18,997

Book Retail Value ~~\$22,495~~

View this vehicle on our website at leesburgautoimport.com

Leesburg Auto Import

Toll Free: 1-866-249-5348, Local: 703-771-7600

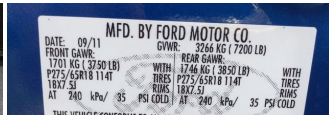
2 Fairfax St SE , Leesburg, Virginia 20175

Photos

Details

Contact





Specifications:

Year:	2011
VIN:	1FTFW1EFXBFC76181
Make:	FORD
Stock:	C76181
Model/Trim:	F150 XLT / Lifted with many upgrades
Condition:	Pre-Owned
Exterior:	BLUE
Mileage:	97,647
Drivetrain:	4 Wheel Drive

Vehicle Description

Installed Options

Interior

- (4) cupholders in flow through console- 110-volt inverter- 4.2" LCD screen in cluster
- 60/40 flip-up rear split bench seat - Ambient lighting
- Auto-dimming rearview mirror w/compass
- Black ring w/black vanes air conditioning registers - Black urethane steering wheel
- Black vinyl floor covering (N/A w/4TR Floor Mats)
- Chaparral leather-wrapped steering wheel w/audio controls
- Chrome ring w/obsidian vanes air conditioning registers
- Cloth 40/20/40 split bench front seat w/manual driver lumbar
- Color-coordinated carpet -inc: carpeted front/rear floor mats
- Color-coordinated carpet -inc: rubber front/rear floor mats
- Color-coordinated carpet -inc: unique front/rear King Ranch floor mats
- Color-coordinated carpet w/Black rubber Off-Road front/rear floor mats
- Color-coordinated urethane steering wheel- Compass- Cruise control
- Customer info display- Delayed accessory pwr
- Deployable cupholder under middle seat
- Display center -inc: warning messages & text functions
- Driver & front passenger covered visor vanity mirrors
- Driver & front passenger illuminated covered visor vanity mirrors
- Driver side SecuriCode keypad entry
- Dual zone electronic automatic temp control (DEATC) air conditioning
- Flow-through console & floor shifter
- Front flow-through console & floor shifter w/King Ranch leather kit
- Front flow-through console w/unique leather lid & leather shift knob - Front map lights
- Front pwr point- Front/rear map lights
- Heated 60/40 flip-up rear split bench seat -inc: folding armrest, cupholders, elongated seat cushion
- King Ranch leather bucket seats w/heated & cooled 10-way pwr driver & front passenger seats, driver seat memory
- Leather trimmed 40/20/40 split bench front seat w/heated 10-way pwr driver & front passenger seats w/lumbar, driver seat memory
- Leather-wrapped black steering wheel w/audio controls
- Leather-wrapped color coordinated steering wheel w/audio controls
- Manual air conditioning
- Message center & trip computer -inc: display center features plus distance to empty, avg. fuel economy, multiple language display choices & temp readout options
- Outside temp gauge
- Premium vinyl 60/40 flip-up rear split bench seat -inc: folding armrest, cupholders, elongated seat cushion, leather inserts
- Pwr adjustable pedals w/memory- Pwr door locks w/autolock feature
- Pwr tilt/telescoping steering column w/memory- Rear pwr point- Rear window defroster
- Remote keyless entry w/integrated key transmitter, illuminated entry & panic button
- Remote start system
- Sport cloth bucket seats w/manual driver & passenger lumbar 6-way pwr driver seat

Option Packages

Factory Installed Packages

5.0L V8 FFV ENGINE

- Sport cloth bucket seats w/manual driver & passenger lumbar, 6-way pwr driver seat
- Sunvisors w/driver side strap, passenger mirror- Tilt steering column
- Tilt/telescoping steering column- Unique aluminum applique on center panel & console
- Unique bright inserts in scuff plates- Unique instrument cluster face
- Unique leather bucket seats w/heated & cooled 10-way pwr driver & front passenger seats, driver seat memory
- Unique leather-wrapped steering wheel w/wood accents, audio controls & memory
- Unique woodgrain interior trim accents- Universal garage door opener
- Vinyl 40/20/40 split bench front seat - 2nd row B-pillar grab handles
- Driver & front passenger door scuff plates - Fade-to-off interior lighting
- Front passenger side A-pillar grab handle
- Gauges -inc: fuel gauge, voltmeter, oil pressure, engine coolant temp, speedometer, tachometer, odometer
- Instrument panel mounted cigar lighter- Overhead console w/(2) storage bins
- Perimeter alarm- Pwr windows w/driver side 1-touch down- Rear door cupholders
- SecuriLock anti-theft ignition (PATS)

Exterior

- 17" gray styled steel wheels- 17" machined aluminum wheels w/painted accents
- 18" 7-spoke aluminum wheels w/painted accents & unique King Ranch logo wheel ornaments
- 18" bright aluminum wheels- 18" machined aluminum wheels
- 20" polished aluminum wheels- Argent rear step bumper
- Autolamp -inc: automatic on/off headlamps - Black door & tailgate handles
- Black front/rear stone cuffs- Black grille surround w/black "bar style" insert
- Black pwr side mirrors- Body-color door & tailgate handles
- Body-color door & tailgate handles w/chrome strap
- Body-color grille surround w/gray "billet style" insert- Body-color rear step bumper
- Body-color wheel lip moldings- Bright bodyside accent moldings
- Chrome front bumper w/black lower valance & body-color upper fascia
- Chrome front bumper w/black lower valance & molded-in-color upper fascia
- Chrome grille surround w/chrome "bar style" insert - Chrome rear step bumper
- Chrome two bar grille surround w/silver mesh insert
- Chrome two-bar grille surround w/Pale Adobe color mesh insert - Fixed rear window
- Fog lamps- Full-size spare tire w/lock, under frame winch-type carrier, safety catch
- High gloss black B-pillar applique- LT275/65CR18 all-terrain OWL spare tire
- P265/70R17 all-terrain OWL tires
- P275/55R20 all-terrain OWL tires -inc: LT275/65R18C all-terrain OWL spare tire
- P275/65R18 all-terrain OWL tires
- Painted argent front bumper w/black lower valance & upper fascia
- Painted body-color front bumper w/black lower valance & body-color upper fascia
- Pale Adobe box top & tailgate moldings
- Pale Adobe front bumper w/black lower valance & body-color upper fascia
- Pale Adobe front/rear stone cuffs- Pale Adobe platform running boards
- Pale Adobe rear step bumper- Pale Adobe wheel lip moldings- Platinum fender badge
- Pwr deployable running boards
- Pwr folding heated side mirrors w/turn signals/memory/drivers auto-dimming function/puddle lamps/chrome skull caps
- Pwr heated side mirrors w/turn signals/memory/drivers auto-dimming function/body-color skull caps
- Pwr side mirrors w/body-color skull caps- Pwr sliding rear window
- Rain sensing windshield wipers- Rear privacy tint glass- Rear solar tint glass
- Satin finish grille surround w/chrome mesh insert - Satin finish tailgate applique
- Sterling gray wheel lip moldings
- Two-tone paint scheme w/Pale Adobe lower accent color
- Unique King Ranch tailgate & fender badges - Variable speed intermittent wipers
- (4) full-size doors- Cargo lamp integrated w/high mount stop light- Outer scuff pad
- Removable tailgate w/key lock & lift assist

Safety

- (4) cupholders in flow through console- 110-volt inverter- 4.2" LCD screen in cluster
- 60/40 flip-up rear split bench seat - Ambient lighting
- Auto-dimming rearview mirror w/compass
- Black ring w/black vanes air conditioning registers - Black urethane steering wheel
- Black vinyl floor covering (N/A w/47R Floor Mats)
- Chaparral leather-wrapped steering wheel w/audio controls
- Chrome ring w/obsidian vanes air conditioning registers
- Cloth 40/20/40 split bench front seat w/manual driver lumbar
- Color-coordinated carpet -inc: carpeted front/rear floor mats
- Color-coordinated carpet -inc: rubber front/rear floor mats
- Color-coordinated carpet -inc: unique front/rear King Ranch floor mats
- Color-coordinated carpet w/Black rubber Off Road front/rear floor mats

- Color-coordinated carpet w/black rubber off-road front/rear floor mats
- Color-coordinated urethane steering wheel- Compass- Cruise control
- Customer info display- Delayed accessory pwr
- Deployable cupholder under middle seat
- Display center -inc: warning messages & text functions
- Driver & front passenger covered visor vanity mirrors
- Driver & front passenger illuminated covered visor vanity mirrors
- Driver side SecuriCode keypad entry
- Dual zone electronic automatic temp control (DEATC) air conditioning
- Flow-through console & floor shifter
- Front flow-through console & floor shifter w/King Ranch leather kit
- Front flow-through console w/unique leather lid & leather shift knob - Front map lights
- Front pwr point- Front/rear map lights
- Heated 60/40 flip-up rear split bench seat -inc: folding armrest, cupholders, elongated seat cushion
- King Ranch leather bucket seats w/heated & cooled 10-way pwr driver & front passenger seats, driver seat memory
- Leather trimmed 40/20/40 split bench front seat w/heated 10-way pwr driver & front passenger seats w/lumbar, driver seat memory
- Leather-wrapped black steering wheel w/audio controls
- Leather-wrapped color coordinated steering wheel w/audio controls
- Manual air conditioning
- Message center & trip computer -inc: display center features plus distance to empty, avg. fuel economy, multiple language display choices & temp readout options
- Outside temp gauge
- Premium vinyl 60/40 flip-up rear split bench seat -inc: folding armrest, cupholders, elongated seat cushion, leather inserts
- Pwr adjustable pedals w/memory- Pwr door locks w/autolock feature
- Pwr tilt/telescoping steering column w/memory- Rear pwr point- Rear window defroster
- Remote keyless entry w/integrated key transmitter, illuminated entry & panic button
- Remote start system
- Sport cloth bucket seats w/manual driver & passenger lumbar, 6-way pwr driver seat
- Sunvisors w/driver side strap, passenger mirror- Tilt steering column
- Tilt/telescoping steering column- Unique aluminum applique on center panel & console
- Unique bright inserts in scuff plates- Unique instrument cluster face
- Unique leather bucket seats w/heated & cooled 10-way pwr driver & front passenger seats, driver seat memory
- Unique leather-wrapped steering wheel w/wood accents, audio controls & memory
- Unique woodgrain interior trim accents- Universal garage door opener
- Vinyl 40/20/40 split bench front seat- 2nd row B-pillar grab handles
- Driver & front passenger door scuff plates - Fade-to-off interior lighting
- Front passenger side A-pillar grab handle
- Gauges -inc: fuel gauge, voltmeter, oil pressure, engine coolant temp, speedometer, tachometer, odometer
- Instrument panel mounted cigar lighter- Overhead console w/(2) storage bins
- Perimeter alarm- Pwr windows w/driver side 1-touch down- Rear door cupholders
- SecuriLock anti-theft ignition (PATS)

Mechanical

- (2) front tow hooks- 3.55 axle ratio (REQ: 99F engine)
- 3.73 axle ratio w/electronic locking differential- 5.5' pickup box
- 6-speed electronic automatic transmission w/OD & tow/haul mode- 6.5' pickup box
- 7200# GVWR, 1550# maximum payload- 7350# GVWR, 1560# maximum payload
- Chrome exhaust tip- Electronic locking differential- Skid plates- Trailer brake controller
- Trailer tow pkg -inc: class IV trailer hitch receiver, 7-pin wiring harness, upgraded radiator, aux trans oil cooler, SelectShift trans
- (4) pickup box tie-down hooks- 2-ton jack- 4-wheel drive- 5.0L V8 FFV engine
- 78-amp/hr (750CCA) maintenance-free battery- Easy Fuel capless fuel filler system
- Gas shock absorbers- Leaf spring rear suspension w/2-stage variable rear springs
- Long-spindle double wishbone front suspension w/coil-over-shock IFS
- Pwr front/rear disc brakes- Pwr rack & pinion steering- Trailer sway control

Price excludes \$599.00 processing fee, registration fees and state and local sales taxes. 3% surcharge will be added on all CC charges over \$500.00. Deposits are non-refundable. All our sales are based on first-come-first-serve policy. We work very hard to accurately describe our vehicles through text descriptions and elaborate photos. When you purchase a pre-owned vehicle it is not a new vehicle. Any used vehicle can have normal wear and blemishes. Please read the descriptions thoroughly and view all pictures.

Leesburg Auto Import

Leesburg Auto Import

View this car on our website at leesburgautoimport.com/6642673

Website: leesburgautoimport.com

Phone: Toll Free: 1-866-249-5348, Local: 703-771-7600

Map: 2 Fairfax St SE, Leesburg, Virginia 20175

