



2009 Ford Super Duty F-250 SRW XLT

Our Price \$16,900

View this vehicle on our website at randyadamsinc.com

[\(830\) 625-7159](tel:8306257159)

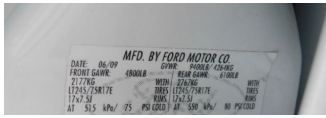
1687 Business Loop 35 S , New Braunfels, TX 78130

Photos

Details

Contact





Specifications:

Year:	2009
VIN:	1FTSW21529EB22842
Make:	Ford
Stock:	B22842
Model/Trim:	Super Duty F-250 SRW XLT
Condition:	Pre-Owned
Body:	Pickup Truck
Exterior:	Oxford White
Engine:	5.4L SOHC 24-VALVE EFI TRITON V8 ENGINE
Interior:	Camel Cloth
Mileage:	64,635
Drivetrain:	4 Wheel Drive

Vehicle Description

Thank you for looking at another one of Randy Adams Inc.'s on-line listings!

Please find out more about this vehicle below:

2009 FORD F250 XLT 4X4

- 5.4L V8 ENGINE
- AUTOMATIC/AC
- TILT WHEEL/CRUISE CONTROL
- AM/FM STEREO W/CD
- SLIDING REAR WINDOW
- POWER WINDOWS, LOCKS, MIRRORS
- TRAILER/BRAKE PACKAGE
- AND MORE

Randy Adams Inc. offers only the very best used cars, trucks, and SUVs in the New Braunfels area. Give us a call at 830-625-7159, email sales@randyadamsinc.com, or stop by and visit us at 1687 Business Loop 35 S, New Braunfels, TX 78130.

Prices do not include Tax, Title, License, Inspection and Documentation Fee.

It is the customer's sole responsibility to verify the existence and condition of any equipment listed. Neither the dealership nor AutoRevo is responsible for misprints on prices or equipment. It is the customer's sole responsibility to verify the accuracy of the prices with the dealer. Pricing subject to change without notice.

Installed Options

Interior

- Cloth 40/20/40 split bench split - Front/rear color-keyed carpeted floor mats
- Pwr door locks w/backlit switches
- Pwr windows w/driver one-touch-down & backlit switches

Option Packages

Factory Installed Packages

5.4L SOHC 24-VALVE EFI TRITON V8 ENGINE

- Pwr windows w/driver one-touch-down & backlit switches
- Remote keyless entry & perimeter anti-theft alarm - (4) air registers w/positive shut-off
- Accessory delay- Auxiliary pwr point
- Black instrumentation -inc: tachometer, speedometer, oil pressure, coolant temp, fuel gauge, indicator lights, message center w/odometer, trip odometer, engine hour meter, warning messages, voltmeter, distance-to-empty, average fuel economy
- Color-keyed carpet full-floor covering- Color-keyed cloth headliner
- Color-keyed door trim panel -inc: color-keyed soft armrest, pwr switch bezel, molded upper applique, upper & lower map pockets, grab handle & reflector
- Color-keyed scuff plates- Cruise control- Dash-top tray
- Driver & passenger grab handles- Driver manual lumbar support
- Dual color-keyed cloth sunvisors-inc: driver-side pocket, passenger-side mirror insert
- Dual color-keyed coat hooks
- FlexFold 60/40 rear bench seat w/fold-flat feature, grocery hooks, dual cupholders, tray, steel load floor
- Front door operated dome lamp w/time delay off & IP switch
- Front passenger-side roof ride handle- Front/rear map lamps- Glove box
- Instrument panel mounted storage bin & trash bag hook
- Manual air conditioning w/chrome ringed black vents - Rear seating roof ride handles
- SecuriLock anti-theft ignition- Tilt steering wheel

Exterior

- (5) LT245/75R17E all-season BSW tires
- 17" chrome steel wheels w/bright center ornaments- Full-size spare tire w/lock & carrier
- Manual telescoping trailer tow mirrors w/pwr heated glass, heated spotter mirror
- Rear privacy glass- Black door handles- Black lower air dam
- Box-rail & tailgate top-edge moldings
- Chrome front bumper w/glossy body-color top cover- Chrome rear bumper
- Dual beam jewel effect headlamps- Front fender vents- Front license plate bracket
- Grille w/medium platinum insert & chrome surround - Interval windshield wipers
- Pickup box/cargo lights- Rear license plate bracket
- Removable locking tailgate w/black handle & Tailgate Assist - Solar tinted glass
- Underhood service light

Safety

- Cloth 40/20/40 split bench split - Front/rear color-keyed carpeted floor mats
- Pwr door locks w/backlit switches
- Pwr windows w/driver one-touch-down & backlit switches
- Remote keyless entry & perimeter anti-theft alarm - (4) air registers w/positive shut-off
- Accessory delay- Auxiliary pwr point
- Black instrumentation -inc: tachometer, speedometer, oil pressure, coolant temp, fuel gauge, indicator lights, message center w/odometer, trip odometer, engine hour meter, warning messages, voltmeter, distance-to-empty, average fuel economy
- Color-keyed carpet full-floor covering- Color-keyed cloth headliner
- Color-keyed door trim panel -inc: color-keyed soft armrest, pwr switch bezel, molded upper applique, upper & lower map pockets, grab handle & reflector
- Color-keyed scuff plates- Cruise control- Dash-top tray
- Driver & passenger grab handles- Driver manual lumbar support
- Dual color-keyed cloth sunvisors-inc: driver-side pocket, passenger-side mirror insert
- Dual color-keyed coat hooks
- FlexFold 60/40 rear bench seat w/fold-flat feature, grocery hooks, dual cupholders, tray, steel load floor
- Front door operated dome lamp w/time delay off & IP switch
- Front passenger-side roof ride handle- Front/rear map lamps- Glove box
- Instrument panel mounted storage bin & trash bag hook
- Manual air conditioning w/chrome ringed black vents - Rear seating roof ride handles
- SecuriLock anti-theft ignition- Tilt steering wheel

Mechanical

- (2) front tow hooks
- 6-speed manual transmission w/OD -inc: PTO provision (REQ: 995 or 99Y Engine)
- Pwr 4-wheel disc brakes w/vacuum boost
- 12.5K Built Ford Tough trailer hitch receiver-inc: 2" hitch - 157-amp HD alternator
- 2-ton mechanical jack- 3.73 axle ratio (REQ: 995 Engine)- 4-wheel drive
- 5.4L SOHC 24-valve EFI Triton V8 engine
- 6-3/4' pickup box-inc: (4) tie-down hooks, partitionable & stackable storage
- 72 amp/hr (650 CCA) battery- Front stabilizer bar- HD gas shock absorbers
- Manual transfer case & hubs- Mono-beam front axle w/coil spring suspension
- Pwr steering w/steering damper- Stationary elevated engine idle control (SEIC)
- Trailer brake controller
- Trailer tow pkg-inc: 7-wire harness w/relays, 7/4 pin combination connector

Purchase prices do not include taxes, title, license, inspection or doc fee. It is the customer's sole responsibility to verify the accuracy of the price and existence and condition of any equipment listed. Dealer is not responsible for any typographical, technical or misprint errors on prices or equipment. This site and all information and materials appearing on it, are presented to the user "as is" without warranty of any kind, either express or implied. Mileage posted may vary slightly due to local test driving, in-transit repairs or road testing. Pricing subject to change without notice. All vehicles are subject to prior sale.

Randy Adams Inc.

View this car on our website at randyadamsinc.com/6640918

Website: randyadamsinc.com

Phone: (830) 625-7159

Map: [1687 Business Loop 35 S, New Braunfels, TX 78130](#)

