

2016 Ram 1500 Sport

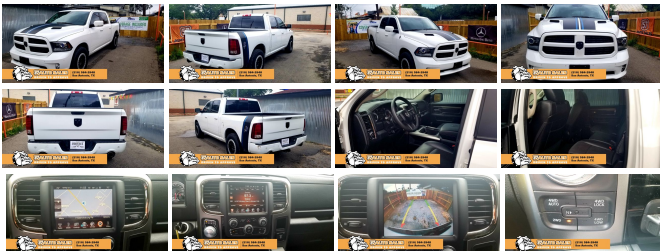
View this car on our website at 57approved.com/6638373/ebrochure



Price **\$28,995**

Specifications:

| | |
|--------------------|------------------------------|
| Year: | 2016 |
| VIN: | 1C6RR7MT0GS248071 |
| Make: | Ram |
| Stock: | WB8071 |
| Model/Trim: | 1500 Sport |
| Condition: | Pre-Owned |
| Body: | Pickup Truck |
| Exterior: | - |
| Engine: | ENGINE: 5.7L V8 HEMI MDS VVT |
| Interior: | - |
| Mileage: | 92,516 |
| Economy: | City 15 / Highway 21 |



Our Location :



2016 Ram 1500 Sport

57 Auto Sales - 210-510-8194 - View this car on our website at 57approved.com/6638373/ebrochure

Installed Options

Interior

- 115V Auxiliary Power Outlet- 3 12V DC Power Outlets
- 4-Way Passenger Seat -inc: Manual Recline and Fore/Aft Movement
- 8-Way Power Driver Seat -inc: Power Recline, Height Adjustment, Fore/Aft Movement and Cushion Tilt
- 8.4" Touchscreen Display- Analog Display- Bucket Seats
- Cargo Area Concealed Storage- Cloth Bucket Seats- Compass
- Cruise Control w/Steering Wheel Controls- Day-Night Auto-Dimming Rearview Mirror
- Delayed Accessory Power
- Driver And Passenger Heated-Cushion, Driver And Passenger Heated-Seatback
- Driver And Passenger Visor Vanity Mirrors w/Driver And Passenger Illumination
- Dual Zone Front Automatic Air Conditioning w/Front Infrared
- FOB Controls -inc: Trunk/Hatch/Tailgate- Fade-To-Off Interior Lighting
- Gauges -inc: Speedometer, Odometer, Voltmeter, Oil Pressure, Engine Coolant Temp, Tachometer, Oil Temperature, Transmission Fluid Temp, Engine Hour Meter, Trip Odometer and Trip Computer
- HVAC -inc: Underseat Ducts and Console Ducts - Heated Leather Steering Wheel
- High Back Seats- Illuminated Glove Box
- Instrument Panel Bin, Dashboard Storage, Driver / Passenger And Rear Door Bins and 2nd Row Underseat Storage
- Interior Trim -inc: Deluxe Sound Insulation, Metal-Look Instrument Panel Insert and Chrome/Metal-Look Interior Accents
- Manual Adjustable Front Head Restraints and Manual Adjustable Rear Head Restraints
- Manual Tilt Steering Column- Mini Overhead Console and 3 12V DC Power Outlets
- Outside Temp Gauge
- Power 1st Row Windows w/Driver And Passenger 1-Touch Up/Down
- Power Adjustable Pedals- Power Door Locks w/Autolock Feature- Power Lumbar Adjust
- Power Rear Windows- Rear 60/40 Split Folding Seat- Rear Cupholder
- Redundant Digital Speedometer
- Remote Keyless Entry w/Integrated Key Transmitter, Illuminated Entry and Panic Button

- Sentry Key Engine Immobilizer- Systems Monitor- Trip Computer- Uconnect Access
- Underhood And Pickup Cargo Box Lights- Urethane Gear Shift Knob- Valet Function
- Vinyl Door Trim Insert- Voice Recorder- Folding Flat Load Floor Storage
- Front Center Armrest w/Storage and Rear Center Armrest- Front Cupholder
- Front Map Lights- Full Carpet Floor Covering -inc: Carpet Front And Rear Floor Mats
- Full Cloth Headliner- Full Length Upgraded Floor Console- GPS Antenna Input
- Garage Door Transmitter

Exterior

- LED Brakelights- Perimeter/Approach Lights- Power Rear Window- Regular Box Style
- Tailgate Rear Cargo Access- Tailgate/Rear Door Lock Included w/Power Door Locks
- Tires: P275/60R20 OWL AS- Variable Intermittent Wipers- Wheels w/Locks
- Wheels: 20" x 9" Polished Aluminum- Galvanized Steel/Aluminum Panels
- Fully Automatic Projector Beam Halogen Headlamps w/Delay-Off
- Full-Size Spare Tire Stored Underbody w/Crankdown- Front License Plate Bracket
- Front Fog Lamps- Deep Tinted Glass- Clearcoat Paint
- Cargo Lamp w/High Mount Stop Light- Body-Colored Rear Step Bumper
- Body-Colored Power Heated Side Mirrors w/Driver Auto Dimming, Power Folding and Turn Signal Indicator
- Body-Colored Grille- Body-Colored Front Bumper- Body-Colored Door Handles
- Black Side Windows Trim and Black Front Windshield Trim - Aluminum Spare Wheel

Safety

- 115V Auxiliary Power Outlet- 3 12V DC Power Outlets
- 4-Way Passenger Seat -inc: Manual Recline and Fore/Aft Movement
- 8-Way Power Driver Seat -inc: Power Recline, Height Adjustment, Fore/Aft Movement and Cushion Tilt
- 8.4" Touchscreen Display- Analog Display- Bucket Seats
- Cargo Area Concealed Storage- Cloth Bucket Seats- Compass
- Cruise Control w/Steering Wheel Controls- Day-Night Auto-Dimming Rearview Mirror
- Delayed Accessory Power
- Driver And Passenger Heated-Cushion, Driver And Passenger Heated-Seatback
- Driver And Passenger Visor Vanity Mirrors w/Driver And Passenger Illumination
- Dual Zone Front Automatic Air Conditioning w/Front Infrared
- FOB Controls -inc: Trunk/Hatch/Tailgate- Fade-To-Off Interior Lighting
- Gauges -inc: Speedometer, Odometer, Voltmeter, Oil Pressure, Engine Coolant Temp, Tachometer, Oil Temperature, Transmission Fluid Temp, Engine Hour Meter, Trip Odometer and Trip Computer
- HVAC -inc: Underseat Ducts and Console Ducts - Heated Leather Steering Wheel
- High Back Seats- Illuminated Glove Box
- Instrument Panel Bin, Dashboard Storage, Driver / Passenger And Rear Door Bins and 2nd Row Underseat Storage
- Interior Trim -inc: Deluxe Sound Insulation, Metal-Look Instrument Panel Insert and Chrome/Metal-Look Interior Accents
- Manual Adjustable Front Head Restraints and Manual Adjustable Rear Head Restraints
- Manual Tilt Steering Column- Mini Overhead Console and 3 12V DC Power Outlets
- Outside Temp Gauge
- Power 1st Row Windows w/Driver And Passenger 1-Touch Up/Down
- Power Adjustable Pedals- Power Door Locks w/Autolock Feature- Power Lumbar Adjust
- Power Rear Windows- Rear 60/40 Split Folding Seat- Rear Cupholder
- Redundant Digital Speedometer
- Remote Keyless Entry w/Integrated Key Transmitter, Illuminated Entry and Panic Button
- Sentry Key Engine Immobilizer- Systems Monitor- Trip Computer- Uconnect Access
- Underhood And Pickup Cargo Box Lights- Urethane Gear Shift Knob- Valet Function
- Vinyl Door Trim Insert- Voice Recorder- Folding Flat Load Floor Storage
- Front Center Armrest w/Storage and Rear Center Armrest- Front Cupholder
- Front Map Lights- Full Carpet Floor Covering -inc: Carpet Front And Rear Floor Mats
- Full Cloth Headliner- Full Length Upgraded Floor Console- GPS Antenna Input
- Garage Door Transmitter

Mechanical

- 1400lbs. Maximum Payload- 160 Amp Alternator- 26 Gal. Fuel Tank
- 3.21 Rear Axle Ratio
- 4-Wheel Disc Brakes w/4-Wheel ABS, Front Vented Discs, Brake Assist and Hill Hold Control
- 50 State Emissions- 730CCA Maintenance-Free Battery- Auto Locking Hubs
- Electric Power-Assist Steering- Electronic Transfer Case
- Engine: 5.7L V8 HEMI MDS VVT- Front And Rear Anti-Roll Bars- GVWR: 6,900 lbs
- HD Shock Absorbers- Multi-Link Rear Suspension w/Coil Springs
- Part And Full-Time Four-Wheel Drive
- Quasi-Dual Stainless Steel Exhaust w/Chrome Tailpipe Finisher

- Short And Long Arm Front Suspension w/Coil Springs
- Towing Equipment -inc: Trailer Sway Control - Trailer Wiring Harness
- Transmission w/Driver Selectable Mode, Sequential Shift Control w/Steering Wheel Controls and HD Oil Cooler
- Transmission: 8-Speed Automatic (8HP70)

Option Packages

Factory Installed Packages

- _____
ENGINE: 5.7L V8 HEMI MDS VVT

57 Auto Sales

57approved.com

210-510-8194

7916 Fredericksburg Rd

San Antonio, TX 78229

© 2020 AutoRevo - All rights reserved. - Powered by [AutoRevo](#)