

# 2014 Subaru Impreza WRX

View this car on our website at [57approved.com/6633188/ebrochure](http://57approved.com/6633188/ebrochure)



Price **\$0**

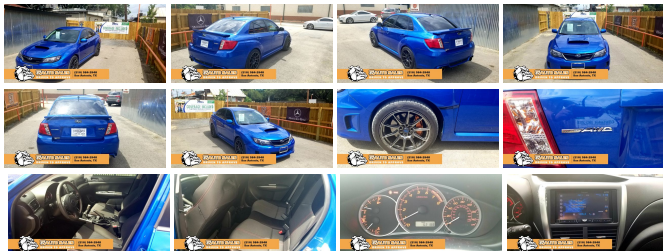
## Specifications:

<b>Year:</b>	2014
<b>VIN:</b>	JF1GV7E63EG004389
<b>Make:</b>	Subaru
<b>Model/Trim:</b>	Impreza WRX
<b>Condition:</b>	Pre-Owned
<b>Body:</b>	Sedan
<b>Exterior:</b>	Blue
<b>Engine:</b>	Engine: 2.5L DOHC Intercooled Turbocharged -inc: Active Valve Control System (AVCS), variable valve timing, and Electronic Throttle Control (ETC)
<b>Interior:</b>	Black Cloth
<b>Mileage:</b>	62,100
<b>Drivetrain:</b>	All Wheel Drive
<b>Economy:</b>	City 19 / Highway 25

57 Auto Sales offers only the best used cars, trucks and SUV's in the San Antonio, TX area. Give us a call at 210-584-2948 or stop by and visit us at 7916 Fredericksburg Rd, San Antonio, TX 78229.

2014 Subaru Impreza WRX

57 Auto Sales - 210-510-8194 - View this car on our website at [57approved.com/6633188/ebrochure](http://57approved.com/6633188/ebrochure)



## Our Location :



2014 Subaru Impreza WRX

57 Auto Sales - 210-510-8194 - View this car on our website at [57approved.com/6633188/ebrochure](http://57approved.com/6633188/ebrochure)

## Installed Options

### Interior

- 2 12V DC Power Outlets
- 4-Way Passenger Seat -inc: Manual Recline and Fore/Aft Movement
- 60-40 Folding Bench Front Facing Fold Forward Seatback Rear Seat - Air Filtration
- Analog Display- Automatic Air Conditioning- Cargo Area Concealed Storage
- Cargo Space Lights- Carpet Floor Trim and Carpet Trunk Lid/Rear Cargo Door Trim
- Checkered Cloth Upholstery w/Red Stitching- Cruise Control w/Steering Wheel Controls
- Day-Night Rearview Mirror- Driver And Passenger Visor Vanity Mirrors- Driver Foot Rest
- Driver Seat- Engine Immobilizer- FOB Controls -inc: Trunk/Hatch/Tailgate
- Fade-To-Off Interior Lighting- Front Center Armrest and Rear Center Armrest
- Front Cupholder- Front Map Lights
- Full Carpet Floor Covering -inc: Carpet Front And Rear Floor Mats - Full Cloth Headliner
- Full Floor Console w/Covered Storage and 2 12V DC Power Outlets
- Gauges -inc: Speedometer, Odometer, Engine Coolant Temp, Tachometer, Trip Odometer and Trip Computer
- HVAC -inc: Underseat Ducts- Illuminated Locking Glove Box
- Instrument Panel Bin, Driver / Passenger And Rear Door Bins
- Interior Trim -inc: Metal-Look Instrument Panel Insert, Metal-Look Door Panel Insert, Metal-Look Console Insert and Chrome/Aluminum Interior Accents
- Leather Gear Shift Knob- Leather/Metal-Look Steering Wheel
- Manual Adjustable Rear Head Restraints- Manual Tilt/Telescoping Steering Column
- Outside Temp Gauge
- Performance Design Front Bucket Seats -inc: integrated fixed head restraint and embroidered WRX logo, height adjustable driver's seat, and front passenger seatback pocket
- Perimeter Alarm- Power 1st Row Windows w/Driver 1-Touch Up/Down
- Power Door Locks- Power Rear Windows- Rear Cupholder
- Remote Keyless Entry w/Integrated Key Transmitter, Illuminated Entry, Illuminated Ignition Switch and Panic Button
- Remote Releases -Inc: Mechanical Cargo Access and Mechanical Fuel

- Seats w/Cloth Back Material- Systems Monitor- Trip Computer- Valet Function

## Exterior

- Auto Off Projector Beam Halogen Daytime Running Headlamps  
- Body-Colored Door Handles- Body-Colored Front Bumper  
- Body-Colored Power Side Mirrors w/Manual Folding- Body-Colored Rear Bumper  
- Chrome Side Windows Trim and Black Front Windshield Trim - Clearcoat Paint  
- Compact Spare Tire Mounted Inside Under Cargo- Fixed Rear Window w/Defroster  
- Front Windshield -inc: Sun Visor Strip- Fully Galvanized Steel Panels  
- Grille w/Metal-Look Bar- Light Tinted Glass- Lip Spoiler- Rocker Panel Extensions  
- Steel Spare Wheel- Tires: P235/45 R17 94W Summer Performance  
- Trunk Rear Cargo Access- Variable Intermittent Wipers  
- Wheels: 17" x 8.0" Aluminum w/Gunmetal Gray Finish

## Safety

- 2 12V DC Power Outlets  
- 4-Way Passenger Seat -inc: Manual Recline and Fore/Aft Movement  
- 60-40 Folding Bench Front Facing Fold Forward Seatback Rear Seat - Air Filtration  
- Analog Display- Automatic Air Conditioning- Cargo Area Concealed Storage  
- Cargo Space Lights- Carpet Floor Trim and Carpet Trunk Lid/Rear Cargo Door Trim  
- Checkered Cloth Upholstery w/Red Stitching- Cruise Control w/Steering Wheel Controls  
- Day-Night Rearview Mirror- Driver And Passenger Visor Vanity Mirrors- Driver Foot Rest  
- Driver Seat- Engine Immobilizer- FOB Controls -inc: Trunk/Hatch/Tailgate  
- Fade-To-Off Interior Lighting- Front Center Armrest and Rear Center Armrest  
- Front Cupholder- Front Map Lights  
- Full Carpet Floor Covering -inc: Carpet Front And Rear Floor Mats- Full Cloth Headliner  
- Full Floor Console w/Covered Storage and 2 12V DC Power Outlets  
- Gauges -inc: Speedometer, Odometer, Engine Coolant Temp, Tachometer, Trip Odometer and Trip Computer  
- HVAC -inc: Underseat Ducts- Illuminated Locking Glove Box  
- Instrument Panel Bin, Driver / Passenger And Rear Door Bins  
- Interior Trim -inc: Metal-Look Instrument Panel Insert, Metal-Look Door Panel Insert, Metal-Look Console Insert and Chrome/Aluminum Interior Accents  
- Leather Gear Shift Knob- Leather/Metal-Look Steering Wheel  
- Manual Adjustable Rear Head Restraints- Manual Tilt/Telescoping Steering Column  
- Outside Temp Gauge  
- Performance Design Front Bucket Seats -inc: integrated fixed head restraint and embroidered WRX logo, height adjustable driver's seat, and front passenger seatback pocket  
- Perimeter Alarm- Power 1st Row Windows w/Driver 1-Touch Up/Down  
- Power Door Locks- Power Rear Windows- Rear Cupholder  
- Remote Keyless Entry w/Integrated Key Transmitter, Illuminated Entry, Illuminated Ignition Switch and Panic Button  
- Remote Releases -Inc: Mechanical Cargo Access and Mechanical Fuel  
- Seats w/Cloth Back Material- Systems Monitor- Trip Computer- Valet Function

## Mechanical

- 110 Amp Alternator- 16.9 Gal. Fuel Tank- 3.90 Axle Ratio  
- 4-Wheel Disc Brakes w/4-Wheel ABS, Front Vented Discs, Brake Assist and Hill Hold Control  
- 48-Amp/Hr Maintenance-Free Battery- Double Wishbone Rear Suspension w/Coil Springs  
- Engine Oil Cooler  
- Engine: 2.5L DOHC Intercooled Turbocharged -inc: Active Valve Control System (AVCS), variable valve timing, and Electronic Throttle Control (ETC)  
- Front And Rear Anti-Roll Bars- Full-Time All-Wheel Drive  
- Gas-Pressurized Shock Absorbers- Hydraulic Power-Assist Speed-Sensing Steering  
- Quasi-Dual Stainless Steel Exhaust w/Polished Tailpipe Finisher  
- Sport Tuned Suspension- Strut Front Suspension w/Coil Springs  
- Transmission: 5-Speed Manual

57 Auto Sales

[57approved.com](http://57approved.com)

210-510-8194

7916 Fredericksburg Rd

San Antonio, TX 78229

© 2020 AutoRevo - All rights reserved. - Powered by AutoRevo

