

# 2019 Ford F-150 XL

View this car on our website at [askjorgelopez.com/6632854/ebrochure](http://askjorgelopez.com/6632854/ebrochure)

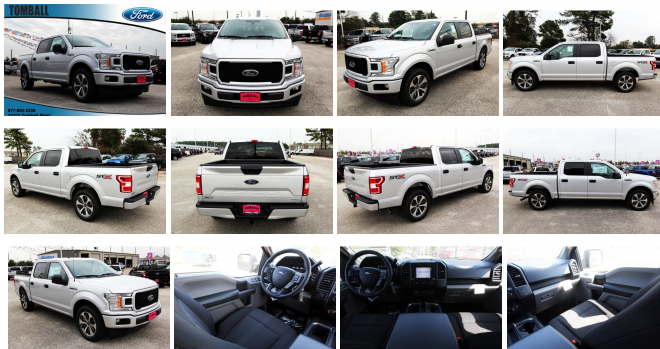


Our Price **\$41,040**

Retail Value ~~\$43,040~~

## Specifications:

<b>Year:</b>	2019
<b>VIN:</b>	1FTEW1CP8KKD24324
<b>Make:</b>	Ford
<b>Stock:</b>	KD24324
<b>Model/Trim:</b>	F-150 XL
<b>Condition:</b>	New
<b>Body:</b>	Pickup Truck
<b>Exterior:</b>	INGOT SILVER
<b>Engine:</b>	ENGINE: 2.7L V6 ECOBOOST
<b>Interior:</b>	Gray
<b>Mileage:</b>	1
<b>Drivetrain:</b>	Rear Wheel Drive
<b>Economy:</b>	City 20 / Highway 25



Recent Arrival! New Price! \$10,595 off MSRP!KBB Fair Market Range Low: \$37,8172019 Ford XL F-150 EcoBoost 2.7L V6 GTDi DOHC 24V Twin Turbocharged RWD Ingot Silver 10-Speed20/26 City/Highway MPG Price includes: \$1,000 - Special Package Retail Customer Cash, \$750 - Bonus Customer Cash, \$250 - Retail Bonus Customer Cash, \$3,000 - Retail Customer Cash

2019 Ford F-150 XL

Ask Jorge Lopez - (866) 773-1396 - View this car on our website at [askjorgelopez.com/6632854/ebrochure](http://askjorgelopez.com/6632854/ebrochure)

## Our Location :



2019 Ford F-150 XL

Ask Jorge Lopez - (866) 773-1396 - View this car on our website at [askjorgelopez.com/6632854/ebrochure](http://askjorgelopez.com/6632854/ebrochure)

## Installed Options

### Interior

- Cloth 40/20/40 Front Seat -inc: 2-way manual driver/passenger adjustment and armrest
- 4-Way Driver Seat -inc: Manual Recline and Fore/Aft Movement
- 4-Way Passenger Seat -inc: Manual Recline and Fore/Aft Movement
- 60-40 Folding Split-Bench Front Facing Fold-Up Cushion Rear Seat
- Manual Tilt/Telescoping Steering Column
- Gauges -inc: Speedometer, Odometer, Voltmeter, Oil Pressure, Engine Coolant Temp, Tachometer, Transmission Fluid Temp and Trip Odometer
- Manual Rear Windows- Front Cupholder- Rear Cupholder- Compass
- Manual Air Conditioning- HVAC -inc: Underseat Ducts- Glove Box
- Interior Trim -inc: Cabback Insulator and Chrome Interior Accents - Full Cloth Headliner
- Urethane Gear Shift Knob- Day-Night Rearview Mirror- Passenger Visor Vanity Mirror
- 3 12V DC Power Outlets- Fade-To-Off Interior Lighting- Full Vinyl/Rubber Floor Covering
- Pickup Cargo Box Lights
- Instrument Panel Bin, Dashboard Storage, Driver / Passenger And Rear Door Bins
- Manual 1st Row Windows- Outside Temp Gauge- Analog Display- Front Center Armrest
- Manual Adjustable Front Head Restraints and Manual Adjustable Rear Head Restraints
- Securilock Anti-Theft Ignition (pats) Engine Immobilizer

### Exterior

- Wheels: 17" Silver Steel- Tires: P245/70R17 BSW A/S- Regular Box Style
- Steel Spare Wheel- Full-Size Spare Tire Stored Underbody w/Crankdown
- Clearcoat Paint- Black Front Bumper w/Black Rub Strip/Fascia Accent
- Black Rear Step Bumper- Black Side Windows Trim and Black Front Windshield Trim
- Black Door Handles- Black Manual Side Mirrors w/Convex Spotter and Manual Folding
- Fixed Rear Window- Light Tinted Glass- Variable Intermittent Wipers- Aluminum Panels
- Black Grille- Tailgate Rear Cargo Access- Manual Tailgate/Rear Door Lock
- Fully Automatic Aero-Composite Halogen Auto High-Beam Daytime Running Lights Preference Setting Headlamps w/Delay-Off

- Cargo Lamp w/High Mount Stop Light

## Safety

- Cloth 40/20/40 Front Seat -inc: 2-way manual driver/passenger adjustment and armrest
- 4-Way Driver Seat -inc: Manual Recline and Fore/Aft Movement
- 4-Way Passenger Seat -inc: Manual Recline and Fore/Aft Movement
- 60-40 Folding Split-Bench Front Facing Fold-Up Cushion Rear Seat
- Manual Tilt/Telescoping Steering Column
- Gauges -inc: Speedometer, Odometer, Voltmeter, Oil Pressure, Engine Coolant Temp, Tachometer, Transmission Fluid Temp and Trip Odometer
- Manual Rear Windows- Front Cupholder- Rear Cupholder- Compass
- Manual Air Conditioning- HVAC -inc: Underseat Ducts- Glove Box
- Interior Trim -inc: Cabback Insulator and Chrome Interior Accents - Full Cloth Headliner
- Urethane Gear Shift Knob- Day-Night Rearview Mirror- Passenger Visor Vanity Mirror
- 3 12V DC Power Outlets- Fade-To-Off Interior Lighting- Full Vinyl/Rubber Floor Covering
- Pickup Cargo Box Lights
- Instrument Panel Bin, Dashboard Storage, Driver / Passenger And Rear Door Bins
- Manual 1st Row Windows- Outside Temp Gauge- Analog Display- Front Center Armrest
- Manual Adjustable Front Head Restraints and Manual Adjustable Rear Head Restraints
- Securilock Anti-Theft Ignition (pats) Engine Immobilizer

## Mechanical

- Engine: 3.3L V6 PDFI -inc: auto start-stop technology and flex-fuel capability
- Transmission: Electronic 6-Speed Automatic -inc: selectable drive modes: normal/tow-haul/sport
- 3.55 Axle Ratio- GVWR: 6,280 lbs Payload Package
- Transmission w/SelectShift Sequential Shift Control- Rear-Wheel Drive
- 70-Amp/Hr 610CCA Maintenance-Free Battery w/Run Down Protection
- 200 Amp Alternator- Towing Equipment -inc: Harness and Trailer Sway Control
- 1700# Maximum Payload- Gas-Pressurized Shock Absorbers- Front Anti-Roll Bar
- Electric Power-Assist Speed-Sensing Steering- Single Stainless Steel Exhaust
- 26 Gal. Fuel Tank- Double Wishbone Front Suspension w/Coil Springs
- Leaf Rear Suspension w/Leaf Springs
- 4-Wheel Disc Brakes w/4-Wheel ABS, Front And Rear Vented Discs, Brake Assist, Hill Hold Control and Electric Parking Brake

## Option Packages

### Factory Installed Packages

- _____	
ENGINE: 2.7L V6 ECOBOOST	
-inc: auto start-stop technology, GVWR: 6,360 lbs Payload Package	\$995
- _____	
Option Packages Total	\$995

Ask Jorge Lopez

[askjorgelopez.com](http://askjorgelopez.com)

(866) 773-1396

22702 Tomball Parkway

Tomball, TX 77375

© 2019 AutoRevo - All rights reserved. - Powered by AutoRevo