

2014 Lexus IS250 F-Sport W/ Upgrades

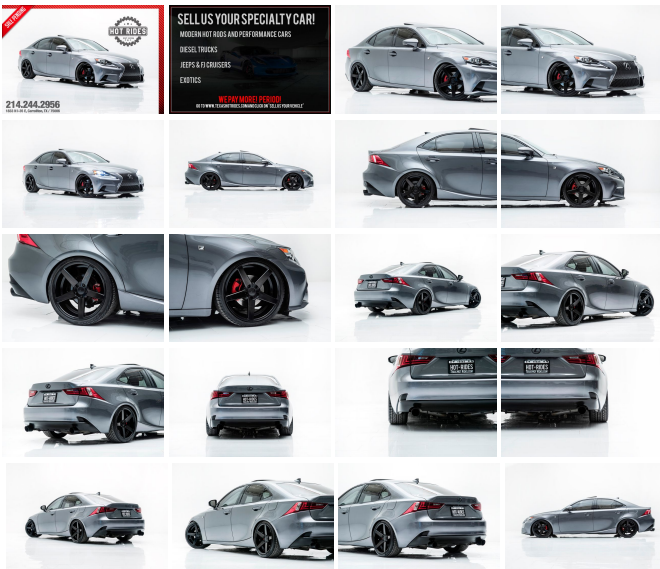
View this car on our website at texashotrides.com/6632161/ebrochure



Our Price **\$22,991**

Specifications:

Year:	2014
VIN:	JTHBF1D26E5020898
Make:	Lexus
Stock:	519120
Model/Trim:	IS250 F-Sport W/ Upgrades
Condition:	Pre-Owned
Body:	Sedan
Exterior:	Nebula Gray Pearl
Engine:	Engine: 2.5L V6 DOHC 24V VVT-i
Interior:	Red
Transmission:	Automatic
Mileage:	55,941
Drivetrain:	Rear Wheel Drive
Economy:	City 21 / Highway 30



2014 LEXUS IS 250 F-SPORT IN NEBULA GRAY PEARL!

Here it is! An amazing car with tons of power/ fuel mileage etc. These cars are extremely fun to drive and turn heads!

WE
FINANCE!

BEAUTIFUL DARK GRAY METALLIC EXTERIOR

LUXURIOUS RED LEATHER INTERIOR

GAS SIPPING 2.5L V6 ENGINE

SMOOTH AUTOMATIC TRANSMISSION

CLEAN CARFAX

LOADED WITH FACTORY OPTIONS:

F-SPORT PACKAGE

NAVIGATION

HEATED SEATS

BACKUP CAMERA

BLIND SPOT MONITORING & REAR CROSS PATH
DETECTION

RARE RED LEATHER INTERIOR PACKAGE

POWER SUNROOF

LED HEADLAMPS

SATELLITE RADIO

TASTEFUL UPGRADES INCLUDE:

19" TSW 5-SPOKE CONCAVE WHEELS

RS*R LOWERING SPRINGS

SATIN BLACK WRAPPED ROOF

UPGRADED CATBACK EXHAUST W/ BLACK TIPS

TINTED WINDOWS

JUST SERVICED & READY TO GO!

EXCELLENT FINANCING OPTIONS AVAILABLE!

This car is a **MUST SEE!!** If you are considering a
NEW car you **MUST CALL FOR ADDITIONAL**
INFORMATION!

Contact our sales team at: **214-**
244-2956

As always, we welcome third party inspections! We offer finance options, We take trade-ins, free airport pick up, world-wide shipping, extended warranties, installation of additional desired items, and **MUCH MORE!** We are a full service dealership.

HOURS OF OPERATION:

Monday - Friday 10am - 6pm C.S.T

Saturday: By appointment, 10-4

2014 Lexus IS250 F-Sport W/ Upgrades

Texas Hot Rides - 214-244-2956 - View this car on our website at texashotrides.com/6632161/ebrochure

Vehicle History Report : as Of 05/25/2019



Snapshot

2014 LEXUS IS 250

	No accidents reported to CARFAX
	No damage reported to CARFAX
	2 Previous owners
	4 Service history records
	Types of owners: Personal lease, Personal
	55,942 Last reported odometer reading



FREE CARFAX Report

See the full CARFAX Report for additional information

*carfax Snapshot is a reflection of available information on the date the report was pulled. carfax is constantly being updated with new information and is subject to change at any time.

Our Location :



2014 Lexus IS250 F-Sport W/ Upgrades

Texas Hot Rides - 214-244-2956 - View this car on our website at texashotrides.com/6632161/ebrochure

Installed Options

Interior

- 10-Way Power Driver Seat -inc: Power Recline, Height Adjustment, Fore/Aft Movement, Cushion Tilt and Power 2-Way Lumbar Support
- 2 12V DC Power Outlets- 2 Seatback Storage Pockets
- 60-40 Folding Bench Front Facing Fold Forward Seatback Rear Seat
- 8-Way Power Passenger Seat -inc: Power Recline, Height Adjustment, Fore/Aft Movement and Cushion Tilt
- Air Filtration- Analog Display- Cargo Space Lights
- Carpet Floor Trim and Carpet Trunk Lid/Rear Cargo Door Trim - Compass
- Cruise Control w/Steering Wheel Controls- Day-Night Auto-Dimming Rearview Mirror
- Delayed Accessory Power- Driver And Passenger Door Bins
- Driver And Passenger Visor Vanity Mirrors w/Driver And Passenger Illumination
- Driver Foot Rest- Dual Zone Front Automatic Air Conditioning- Engine Immobilizer
- FOB Controls -inc: Trunk/Hatch/Tailgate, Windows and Sunroof/Convertible Roof
- Fade-To-Off Interior Lighting- Front And Rear Map Lights- Front Bucket Seats
- Front Center Armrest and Rear Center Armrest w/Storage- Front Cupholder

- Front Center Armrest and Rear Center Armrest w/Storage - Front Cupholder
- Front Seats w/Leatherette Back Material and Power 2-Way Driver Lumbar
- Full Carpet Floor Covering -inc: Carpet Front And Rear Floor Mats - Full Cloth Headliner
- Full Floor Console w/Covered Storage, Mini Overhead Console and 2 12V DC Power Outlets
- Gauges -inc: Speedometer, Odometer, Engine Coolant Temp, Tachometer, Trip Odometer and Trip Computer
- HVAC -inc: Underseat Ducts and Console Ducts - HomeLink Garage Door Transmitter
- Illuminated Locking Glove Box
- Interior Trim -inc: Metal-Look Instrument Panel Insert, Metal-Look Door Panel Insert, Metal-Look Console Insert and Chrome/Metal-Look Interior Accents
- Leather/Metal-Look Steering Wheel- Leatherette Door Trim Insert
- Manual Adjustable Front Head Restraints and Manual Adjustable Rear Head Restraints
- Manual Tilt/Telescoping Steering Column- Metal-Look Gear Shift Knob
- NuLuxe Seat Trim- Outside Temp Gauge- Perimeter Alarm
- Power 1st Row Windows w/Front And Rear 1-Touch Up/Down
- Power Door Locks w/Autolock Feature- Power Rear Windows
- Proximity Key For Doors And Push Button Start - Rear Cupholder
- Remote Keyless Entry w/Integrated Key Transmitter, 2 Door Curb/Courtesy, Illuminated Entry, Illuminated Ignition Switch and Panic Button
- Remote Releases -Inc: Power Fuel- Systems Monitor- Tracker System- Trip Computer
- Valet Function

Exterior

- Black Grille w/Chrome Surround- Body-Colored Door Handles
- Body-Colored Front Bumper
- Body-Colored Power Heated Side Mirrors w/Manual Folding and Turn Signal Indicator
- Body-Colored Rear Bumper
- Chrome Side Windows Trim and Black Front Windshield Trim - Clearcoat Paint
- Compact Spare Tire Mounted Inside Under Cargo
- Express Open/Close Sliding And Tilting Glass 1st Row Sunroof w/Sunshade
- Fixed Rear Window w/Defroster- Front Fog Lamps
- Fully Automatic Projector Beam High Intensity Low/High Beam Daytime Running Auto-Leveling Headlamps w/Delay-Off
- Fully Galvanized Steel Panels- LED Brakelights- Light Tinted Glass
- Perimeter/Approach Lights- Speed Sensitive Variable Intermittent Wipers
- Steel Spare Wheel- Tires: P225/45VR17 AS -inc: disc wheel- Trunk Rear Cargo Access
- Wheels: 17" x 7.5" 10-Spoke Aluminum Alloy

Safety

- 10-Way Power Driver Seat -inc: Power Recline, Height Adjustment, Fore/Aft Movement, Cushion Tilt and Power 2-Way Lumbar Support
- 2 12V DC Power Outlets- 2 Seatback Storage Pockets
- 60-40 Folding Bench Front Facing Fold Forward Seatback Rear Seat
- 8-Way Power Passenger Seat -inc: Power Recline, Height Adjustment, Fore/Aft Movement and Cushion Tilt
- Air Filtration- Analog Display- Cargo Space Lights
- Carpet Floor Trim and Carpet Trunk Lid/Rear Cargo Door Trim - Compass
- Cruise Control w/Steering Wheel Controls- Day-Night Auto-Dimming Rearview Mirror
- Delayed Accessory Power- Driver And Passenger Door Bins
- Driver And Passenger Visor Vanity Mirrors w/Driver And Passenger Illumination
- Driver Foot Rest- Dual Zone Front Automatic Air Conditioning- Engine Immobilizer
- FOB Controls -inc: Trunk/Hatch/Tailgate, Windows and Sunroof/Convertible Roof
- Fade-To-Off Interior Lighting- Front And Rear Map Lights- Front Bucket Seats
- Front Center Armrest and Rear Center Armrest w/Storage- Front Cupholder
- Front Seats w/Leatherette Back Material and Power 2-Way Driver Lumbar
- Full Carpet Floor Covering -inc: Carpet Front And Rear Floor Mats - Full Cloth Headliner
- Full Floor Console w/Covered Storage, Mini Overhead Console and 2 12V DC Power Outlets
- Gauges -inc: Speedometer, Odometer, Engine Coolant Temp, Tachometer, Trip Odometer and Trip Computer
- HVAC -inc: Underseat Ducts and Console Ducts - HomeLink Garage Door Transmitter
- Illuminated Locking Glove Box
- Interior Trim -inc: Metal-Look Instrument Panel Insert, Metal-Look Door Panel Insert, Metal-Look Console Insert and Chrome/Metal-Look Interior Accents
- Leather/Metal-Look Steering Wheel- Leatherette Door Trim Insert
- Manual Adjustable Front Head Restraints and Manual Adjustable Rear Head Restraints
- Manual Tilt/Telescoping Steering Column- Metal-Look Gear Shift Knob
- NuLuxe Seat Trim- Outside Temp Gauge- Perimeter Alarm
- Power 1st Row Windows w/Front And Rear 1-Touch Up/Down
- Power Door Locks w/Autolock Feature- Power Rear Windows
- Proximity Key For Doors And Push Button Start - Rear Cupholder
- Remote Keyless Entry w/Integrated Key Transmitter, 2 Door Curb/Courtesy, Illuminated

Entry, Illuminated Ignition Switch and Panic Button

- Remote Releases -Inc: Power Fuel- Systems Monitor- Tracker System- Trip Computer
- Valet Function

Mechanical

- 100 Amp Alternator- 17.4 Gal. Fuel Tank- 3.73 Axle Ratio
- 4-Wheel Disc Brakes w/4-Wheel ABS, Front Vented Discs, Brake Assist and Hill Hold Control
- 65-Amp/Hr Maintenance-Free Battery- Double Wishbone Front Suspension w/Coil Springs
- Electric Power-Assist Speed-Sensing Steering- Engine: 2.5L V6 DOHC 24V VVT-i
- Front And Rear Anti-Roll Bars- Gas-Pressurized Shock Absorbers
- Multi-Link Rear Suspension w/Coil Springs
- Quasi-Dual Stainless Steel Exhaust w/Polished Tailpipe Finisher- Rear-Wheel Drive
- Transmission w/Driver Selectable Mode
- Transmission: Electronic 6-Speed ECT-i Automatic -inc: steering wheel-mounted paddle shifters

Option Packages

Factory Installed Packages

BACKUP CAMERA
\$350

BLIND SPOT MONITOR W/REAR CROSS
TRAFFIC ALERT
\$600

F-SPORT PACKAGE
-inc: F-Sport Tuned Suspension, \$3,115
Heated Front Sport Seats, LFA
Inspired TFT Instrumentation,
Sport Shift Knob, Silver
Performance Trim, F-Sport
Badging, badging on steering
wheel and front fender, Tires:
Summer P225/40R18
Front/P255/35R18 Rear, Sport
Steering Wheel w/Paddles,
Unique Front Fascia/Grille,
LED Headlamps, Aluminum
Sport Pedals, Stainless Steel
Scuff Plates, Lexus logo,
Wheels: 18" F-Sport F-Sport
split 5 spoke, Glove Box w/Key

HEATED FRONT SPORT SEATS

NAVIGATION PACKAGE
-inc: Lexus Enform, \$2,085
SafetyConnect, which includes
automatic collision notification,
stolen vehicle location,
enhanced roadside assistance,
destination assist, eDestination
and apps suite (complimentary
1-year trial subscription),
Telematics, remote, Rear
Back-Up Camera, XM
NavTraffic/XM NavWeather,
XM sports, stocks and fuel
prices (complimentary 1-year
trial subscription), Navigation
System, DVD Player

REAR BUMPER APPLIQUE
\$76

NEBULA GRAY PEARL

RIOJA RED, F SPORT NULUXE SEAT
TRIM

-
Option Packages Total
\$6,226

Texas Hot Rides

texashotrides.com

214-244-2956

1833 N Interstate 35E

Carrollton, TX 75006

© 2019 AutoRevo - All rights reserved. - Powered by [AutoRevo](#)