

# 2018 Jeep Wrangler JL Unlimited Rubicon 4X4 CUSTOM,LIFTED,LED'S,NAV,FUEL WHLS

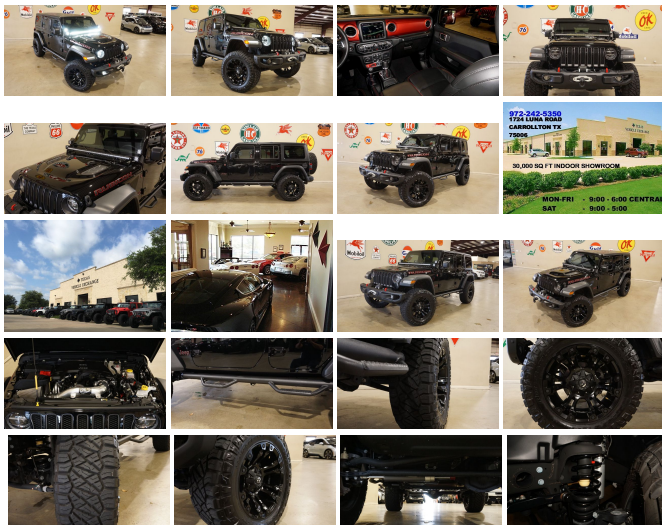
View this car on our website at [tveauto.com/6629965/ebrochure](http://tveauto.com/6629965/ebrochure)



Our Price **\$55,900**

## Specifications:

Year:	2018
VIN:	1C4HJXFG6JW152442
Make:	Jeep
Stock:	152442
Model/Trim:	Wrangler JL Unlimited Rubicon 4X4 CUSTOM,LIFTED,LED'S,NAV,FUEL WHLS
Condition:	Pre-Owned
Body:	SUV
Exterior:	Black Clearcoat
Engine:	ENGINE: 3.6L V6 24V VVT UPG I W/ESS
Interior:	Black Leather
Transmission:	TRANSMISSION: 8-SPEED AUTOMATIC (850RE)
Mileage:	8,511
Drivetrain:	4 Wheel Drive
Economy:	City 17 / Highway 23



NATION WIDE FINANCING

SUBMIT CREDIT APP [WWW.TVEAUTO.COM](http://WWW.TVEAUTO.COM)

OR CALL 972-242-5350

**"BLACK CLEAR COAT EDITION"**

CUSTOM BUILT 2018 JEEP WRANGLER JL  
UNLIMITED RUBICON 4X4 WITH 24R  
PACKAGE

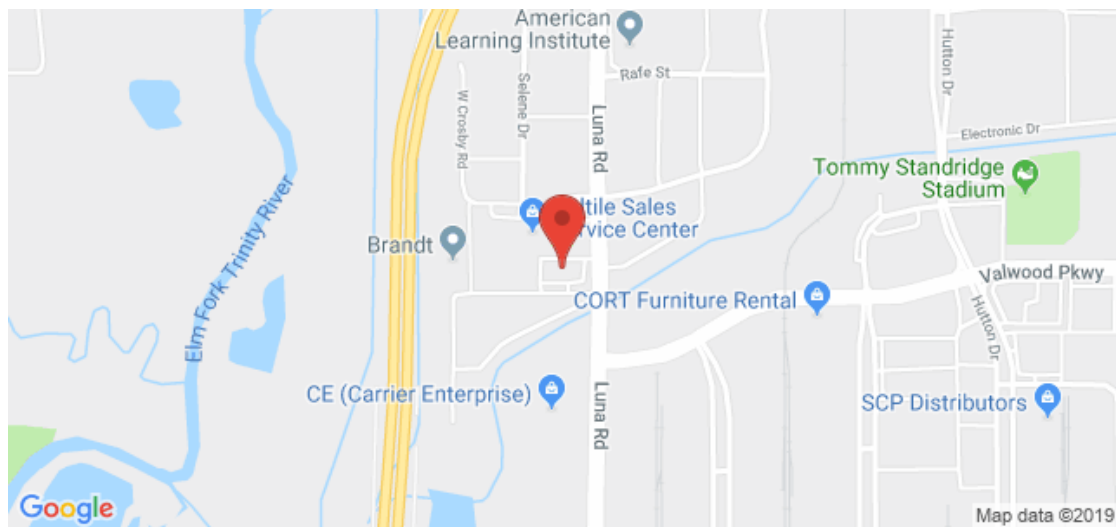
**UPGRADES INCLUDE:**

- \* BLACK CLEAR COAT
- \* BLACK 3 PIECE HARD TOP
- \* FACTORY BLACK LEATHER SEATS
- \* FACTORY REMOTE START
- \* REMOTE PROXIMITY KEYLESS ENTRY
- \* COLD WEATHER GROUP
- \* LED LIGHTING GROUP
- \* JEEP ACTIVE SAFETY GROUP
- \* STEEL BUMPER GROUP
- \* TRAILER TOW & HD ELECTRICAL GROUP
- \* FACTORY 8.4 INCH TOUCH SCREEN NAVIGATION WITH HD AM/FM/SIRIUS STEREO & ALPINE PREMIUM AUDIO SYSTEM
- \* FACTORY BACK-UP CAMERA
- \* U-CONNECT
  
- \* (4.10 AXLE RATIO)
  
- \* FACTORY STEEL FRONT BUMPER WITH LED FOGLIGHTS
- \* SMITTYBILT NEW GEN II "X20" 10,000 LB WATERPROOF AND WIRELESS CONTROL WINCH WITH SYNTHETIC ROPE
- \* FACTORY 55 PROLINK (BLACK)
- \* FACTORY LED HEADLIGHTS
- \* MOPAR 10TH ANNIVERSARY RUBICON POWER DOME HOOD
- \* MOPAR 2" LIFT KIT WITH FOX SERIES SHOCKS
- \* TERAFLX FALCON STABILIZER KIT
- \* MOPAR AUXILIARY SWITCH BANK KIT
  
- \* 50" LED LIGHT BAR AND 2 RIGID INDUSTRIES DUALY D2 LED PILLAR LIGHTS

- \* N-FAB BLACK TUBULAR STEPS
- \* ROUGH COUNTRY SPARE TIRE ADAPTOR
- \* FACTORY STEEL REAR BUMPER WITH REAR PARK DISTANCE SENSORS
- \* MAGNAFLOW BLACK SERIES EXHAUST SYSTEM
- \* MOPAR ALL WEATHER FLOOR MATS
- \* SUPERCHIPS FLASHCAL PROGRAMMER
- \* 20" FUEL BLACK "VAPOR" WHEELS
- \* NITTO RIDGE GRAPPLER 37X13.50R/20 TIRES

**WE BUILD EVERY JEEP WITH PRIDE! DO NOT HESITATE TO CALL US WITH THIS JEEP BUILD. WE CAN MAKE CHANGES TO THIS JEEP BUILD OR CUSTOM BUILD ANY JEEP TO YOUR PREFERENCE. GIVE US A CALL @ 972-242-5350 OR STOP BY FOR A TEST DRIVE. 1724 LUNA RD IN CARROLLTON - 2 MILES NORTH OF 635.**

## Our Location :



2018 Jeep Wrangler JL Unlimited Rubicon 4X4 CUSTOM,LIFTED,LED'S,NAV,FUEL WHLS  
Texas Vehicle Exchange - 972-242-5350 - View this car on our website at [veauto.com/6629965/ebrochure](http://veauto.com/6629965/ebrochure)

## Installed Options

### Interior

- 2 12V DC Power Outlets- 2 12V DC Power Outlets and 1 AC Power Outlet
- 2 Seatback Storage Pockets
- 4-Way Passenger Seat -inc: Manual Recline and Fore/Aft Movement
- 6-Way Driver Seat -inc: Manual Recline, Height Adjustment, Fore/Aft Movement and Manual Lumbar Support
- 60-40 Folding Split-Bench Front Facing Fold Forward Seatback Premium Cloth Rear Seat
- Air Filtration- Analog Display- Cargo Space Lights
- Carpet Floor Trim, Carpet And Rubber Mat- Compass
- Cruise Control w/Steering Wheel Controls- Day-Night Rearview Mirror
- Delayed Accessory Power
- Driver And Passenger Visor Vanity Mirrors w/Driver And Passenger Illumination
- Fade-To-Off Interior Lighting- Front And Rear Map Lights
- Front Center Armrest w/Storage
- Front Seats w/Cloth Back Material and Manual Driver Lumbar
- Full Carpet Floor Covering -inc: Carpet Front And Rear Floor Mats
- Full Floor Console w/Locking Storage, 2 12V DC Power Outlets and 1 AC Power Outlet
- Garage Door Transmitter
- Gauges -inc: Speedometer, Odometer, Voltmeter, Oil Pressure, Engine Coolant Temp, Tachometer, Engine Hour Meter, Trip Odometer and Trip Computer
- HVAC -inc: Console Ducts- Illuminated Front Cupholder- Illuminated Rear Cupholder
- Instrument Panel Bin, Dashboard Storage, Driver / Passenger And Rear Door Bins
- Interior Trim -inc: Colored Instrument Panel Insert, Metal-Look Door Panel Insert, Metal-Look Console Insert and Metal-Look Interior Accents
- Leather Steering Wheel- Locking Cargo Area Concealed Storage- Locking Glove Box
- Manual Adjustable Front Head Restraints and Foldable Rear Head Restraints
- Manual Tilt/Telescoping Steering Column- Outside Temp Gauge- Perimeter Alarm
- Power 1st Row Windows w/Driver And Passenger 1-Touch Down
- Power Door Locks w/Autolock Feature
- Power Rear Windows and Removable 3rd Row Windows

- Premium Cloth Low-Back Bucket Seats- Proximity Key For Push Button Start Only
- Redundant Digital Speedometer
- Remote Keyless Entry w/Integrated Key Transmitter, Illuminated Entry and Panic Button
- Sentry Key Engine Immobilizer- Smart Device Integration- Systems Monitor
- Trip Computer- Urethane Gear Shift Knob
- Voice Activated Dual Zone Front Automatic Air Conditioning

---

## Exterior

- Tailgate/Rear Door Lock Included w/Power Door Locks
- Tires: LT285/70R17C BSW Off-Road- Variable Intermittent Wipers
- Wheels: 17" x 7.5" Polished w/Black Pockets- Removable Rear Window
- Non-Lock Fuel Cap w/o Discriminator
- Manual Convertible Top w/Fixed Roll-Over Protection
- Galvanized Steel/Aluminum/Magnesium Panels
- Fully Automatic Aero-Composite Halogen Daytime Running Headlamps w/Delay-Off
- Full-Size Spare Tire Mounted Outside Rear- Front Fog Lamps- Deep Tinted Glass
- Conventional Rear Cargo Access- Clearcoat Paint w/Badging
- Body-Color Grille w/Colored Accents- Black Wheel Well Trim and Black Fender Flares
- Black Side Windows Trim- Black Rear Bumper w/1 Tow Hook
- Black Power Heated Side Mirrors w/Manual Folding- Black Front Bumper w/2 Tow Hooks
- Black Door Handles- Aluminum Spare Wheel

---

## Safety

- 2 12V DC Power Outlets- 2 12V DC Power Outlets and 1 AC Power Outlet
- 2 Seatback Storage Pockets
- 4-Way Passenger Seat -inc: Manual Recline and Fore/Aft Movement
- 6-Way Driver Seat -inc: Manual Recline, Height Adjustment, Fore/Aft Movement and Manual Lumbar Support
- 60-40 Folding Split-Bench Front Facing Fold Forward Seatback Premium Cloth Rear Seat
- Air Filtration- Analog Display- Cargo Space Lights
- Carpet Floor Trim, Carpet And Rubber Mat- Compass
- Cruise Control w/Steering Wheel Controls- Day-Night Rearview Mirror
- Delayed Accessory Power
- Driver And Passenger Visor Vanity Mirrors w/Driver And Passenger Illumination
- Fade-To-Off Interior Lighting- Front And Rear Map Lights
- Front Center Armrest w/Storage
- Front Seats w/Cloth Back Material and Manual Driver Lumbar
- Full Carpet Floor Covering -inc: Carpet Front And Rear Floor Mats
- Full Floor Console w/Locking Storage, 2 12V DC Power Outlets and 1 AC Power Outlet
- Garage Door Transmitter
- Gauges -inc: Speedometer, Odometer, Voltmeter, Oil Pressure, Engine Coolant Temp, Tachometer, Engine Hour Meter, Trip Odometer and Trip Computer
- HVAC -inc: Console Ducts- Illuminated Front Cupholder- Illuminated Rear Cupholder
- Instrument Panel Bin, Dashboard Storage, Driver / Passenger And Rear Door Bins
- Interior Trim -inc: Colored Instrument Panel Insert, Metal-Look Door Panel Insert, Metal-Look Console Insert and Metal-Look Interior Accents
- Leather Steering Wheel- Locking Cargo Area Concealed Storage- Locking Glove Box
- Manual Adjustable Front Head Restraints and Foldable Rear Head Restraints
- Manual Tilt/Telescoping Steering Column- Outside Temp Gauge- Perimeter Alarm
- Power 1st Row Windows w/Driver And Passenger 1-Touch Down
- Power Door Locks w/Autolock Feature
- Power Rear Windows and Removable 3rd Row Windows
- Premium Cloth Low-Back Bucket Seats- Proximity Key For Push Button Start Only
- Redundant Digital Speedometer
- Remote Keyless Entry w/Integrated Key Transmitter, Illuminated Entry and Panic Button
- Sentry Key Engine Immobilizer- Smart Device Integration- Systems Monitor
- Trip Computer- Urethane Gear Shift Knob
- Voice Activated Dual Zone Front Automatic Air Conditioning

---

## Mechanical

- 21.5 Gal. Fuel Tank- 220 Amp Alternator
- 4-Wheel Disc Brakes w/4-Wheel ABS, Front Vented Discs, Brake Assist and Hill Hold Control
- 4.10 Rear Axle Ratio- 5 Skid Plates- 50 State Emissions
- 650CCA Maintenance-Free Battery w/Run Down Protection- 892# Maximum Payload
- Auto Locking Hubs- Brake Actuated Limited Slip Differential
- Driver Selectable Front Locking Differential - Driver Selectable Rear Locking Differential
- Electro-Hydraulic Power Assist Steering- Engine Auto Stop-Start Feature
- Engine Oil Cooler- Engine: 3.6L V6 24V VVT UPG I w/ESS
- Front Active w/Driver Control Anti-Roll Bar and Rear Anti-Roll Bar- GVWR: 5,800 lbs

- HD Shock Absorbers- Leading Link Front Suspension w/Coil Springs
- Manual Transfer Case- Part-Time Four-Wheel Drive- Performance Suspension
- Single Stainless Steel Exhaust- Towing Equipment -inc: Trailer Sway Control
- Trailing Arm Rear Suspension w/Coil Springs- Transmission: 6-Speed Manual

## Option Packages

### Factory Installed Packages

ENGINE: 3.6L V6 24V VVT UPG I W/ESS

TRANSMISSION: 8-SPEED AUTOMATIC (850RE)

-inc: Tip Start, Hill Descent Control \$2,000

BLACK 3-PIECE HARD TOP

-inc: Freedom Panel Storage Bag, Rear Window Defroster, Rear Window Wiper/Washer \$1,195

COLD WEATHER GROUP

-inc: Heated Steering Wheel, Heated Front Seats \$995

ELECTRONIC INFOTAINMENT SYSTEM GROUP

-inc: SiriusXM Traffic Plus, Alpine Premium Audio System, HD Radio, Radio: Uconnect 4C Nav w/8.4" Display, Rear View Auto Dim Mirror, 1-Year SiriusXM Guardian Trial, 5-Year SiriusXM Travel Link Service, GPS Navigation, 5-Year SiriusXM Traffic Service, SiriusXM Travel Link, Roadside Assistance & 9-1-1 Call, 8.4" Touchscreen Display \$1,595

LED LIGHTING GROUP

-inc: Daytime Running Lamps LED Accents, Front LED Fog Lamps, LED Reflector Headlamps, LED Taillamps \$995

REMOTE PROXIMITY KEYLESS ENTRY

\$495

SAFETY GROUP

-inc: ParkSense Rear Park Assist System, Blind Spot & Cross Path Detection \$995

STEEL BUMPER GROUP

-inc: Steel Front Bumper, Steel Rear Bumper \$1,295

TRAILER TOW & HD ELECTRICAL GROUP

-inc: Class II Receiver Hitch, 700 Amp Maintenance Free Battery, 7 & 4 Pin Wiring Harness, 240 Amp Alternator, Auxiliary Switches \$795

BLACK CLEARCOAT

BLACK, LEATHER TRIMMED BUCKET SEATS

-inc: #1 Seat Foam Cushion, Leather Wrapped Park Brake Handle, Leather Wrapped Shift Knob, Premium Door Trim \$1,495

INVO, FERRARI COUPE 1911  
Panel

-  
Option Packages Total  
\$11,855

---

Texas Vehicle Exchange

[tveauto.com](http://tveauto.com)

972-242-5350

1724 Luna Road

Carrollton, TX 75006

© 2019 AutoRevo - All rights reserved. - Powered by AutoRevo