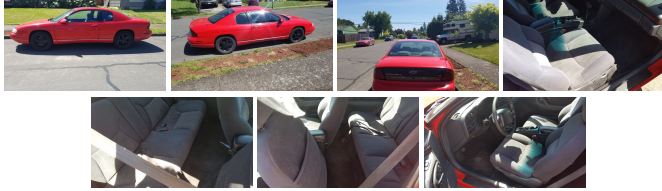


1998 Chevrolet Monte Carlo LS

View this car on our website at priceisrightoregon.com/6627538/ebrochure



Our Price **\$1,495**

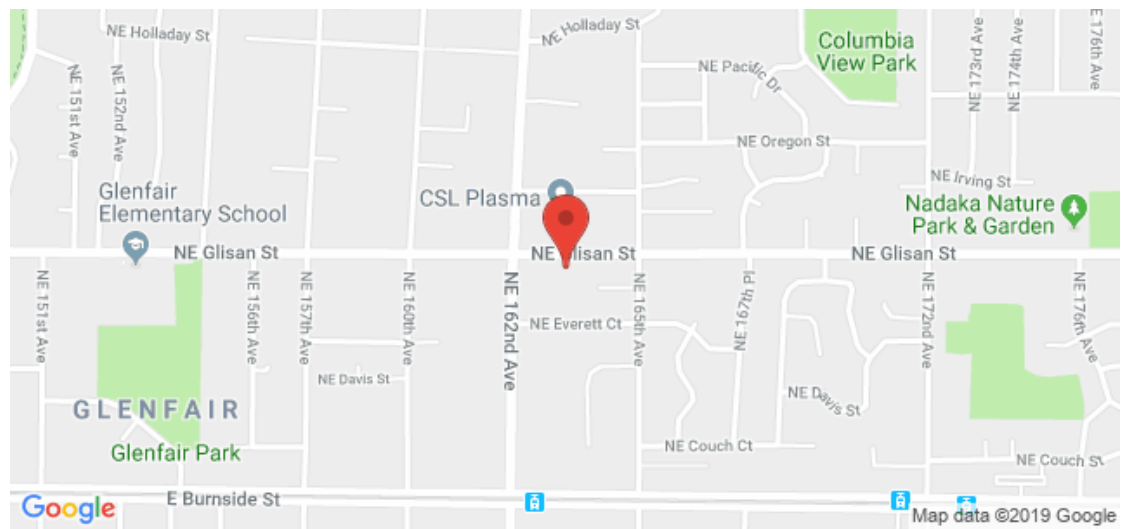
Specifications:

Year:	1998
VIN:	2G1WW12M1W9269713
Make:	Chevrolet
Model/Trim:	Monte Carlo LS
Condition:	Pre-Owned
Body:	Coupe
Exterior:	Red
Engine:	3.1L (191) SFI V6 3100 ENGINE
Interior:	Gray
Mileage:	185,503
Drivetrain:	Front Wheel Drive
Economy:	City 20 / Highway 29

1998 Chevrolet Monte Carlo LS

Price is Right Oregon - 971-279-2550 - View this car on our website at priceisrightoregon.com/6627538/ebrochure

Our Location :



1998 Chevrolet Monte Carlo LS

Price is Right Oregon - 971-279-2550 - View this car on our website at priceisrightoregon.com/6627538/ebrochure

Installed Options

Interior

- Air conditioning- Auxiliary lighting-inc: glove box, trunk, ashtray, dome, dual reading
- Cupholder integral w/instrument panel
- Custom cloth 60/40 split bench seat-inc: center storage armrest, cupholder, 4-way manual seat adjuster, rear split fold down seat
- ETR AM/FM stereo w/cassette, auto tone control-inc: seek-scan, digital clock, theft lock, speed compensated volume, premium front/rear coaxial speakers
- Engine oil wear indicator- Front/rear carpeted floor mats
- Interior lighting w/sustained illumination- LH visor mirror/RH illuminated visor mirror
- Low coolant level sensor- PASS-Key II theft deterrent system - Pwr door locks
- Pwr windows- Scotchgard fabric protector-inc: seats, door trim, floor covering
- Tachometer- Tilt-wheel adjustable steering column

Exterior

- Base coat/clear coat paint- Color-keyed body-side moldings- Daytime running lights
- Dual body-color remote electric mirrors- Solar-ray tinted glass
- Variable intermittent windshield wipers

Safety

- Air conditioning- Auxiliary lighting-inc: glove box, trunk, ashtray, dome, dual reading
- Cupholder integral w/instrument panel
- Custom cloth 60/40 split bench seat-inc: center storage armrest, cupholder, 4-way manual seat adjuster, rear split fold down seat
- ETR AM/FM stereo w/cassette, auto tone control-inc: seek-scan, digital clock, theft lock, speed compensated volume, premium front/rear coaxial speakers
- Engine oil wear indicator- Front/rear carpeted floor mats
- Interior lighting w/sustained illumination- LH visor mirror/RH illuminated visor mirror
- Low coolant level sensor- PASS-Key II theft deterrent system - Pwr door locks
- Pwr windows- Scotchgard fabric protector-inc: seats, door trim, floor covering
- Tachometer- Tilt-wheel adjustable steering column

Mechanical

- 15" x 6" steel wheels w/deluxe silver bolt-on wheel covers - 16.6 gallon fuel tank
- 3.1L (191) SFI V6 3100 engine - 3.29 axle ratio
- 4-speed electronically-controlled automatic transmission w/OD
- 4-wheel anti-lock brake system- 4-wheel independent suspension system
- Front wheel drive- Front/rear stabilizer bars- P205/70R15 SBR BSW touring tires
- Pwr front disc/rear drum brakes- Pwr steering

Option Packages

Factory Installed Packages

- _____
- 3.1L (191) SFI V6 3100 ENGINE

Price is Right Oregon

priceisrightoregon.com

971-279-2550

16306 NE Glisan St

Portland, OR 97230

© 2019 AutoRevo - All rights reserved. - Powered by AutoRevo