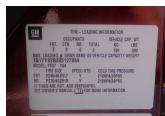


2003 Chevrolet Corvette 50th Anniversary

View this car on our website at upstateautosalesinc.com/6627405/ebrochure



Our Price **\$41,900**

Specifications:

Year:	2003
VIN:	1G1YY32G335127834
Make:	Chevrolet
Model/Trim:	Corvette 50th Anniversary
Condition:	Pre-Owned
Body:	Convertible
Exterior:	Burgundy
Engine:	ENGINE, 5.7L LS1 V8 SFI
Interior:	Tan Leather
Mileage:	1,505
Drivetrain:	Rear Wheel Drive
Economy:	City 18 / Highway 25

2003 Chevrolet Corvette 50th Anniversary

Upstate Auto Sales - 518-663-9089 - View this car on our website at upstateautosalesinc.com/6627405/ebrochure

Our Location :



2003 Chevrolet Corvette 50th Anniversary

Upstate Auto Sales - 518-663-9089 - View this car on our website at upstateautosalesinc.com/6627405/ebrochure

Installed Options

Interior

- Defogger, rear-window, electric-inc: front & side window outlets, driver & front passenger
- Seat adjuster, power, driver 6-way- Seat adjuster, power, front passenger 6-way
- Seats, front leather seating surfaces bucket, Sport-inc: lateral support & back angle adjustment, adjustable lumbar & side bolsters, & 6-way power driver & front passenger seats
- Sound system, ETR AM/FM stereo w/CD player-inc: seek-&-scan, digital clock, auto-tone control, speed-compensated volume & TheftLock
- Steering column, Tilt-Wheel-inc: (NK4) Steering wheel, leather-wrapped rim
- Air conditioning, dual-zone, automatic-inc: individual climate settings for driver & right front passenger, automatic climate control & outside temperature display
- Antenna, power
- Console, floor, lockable-inc: integral cupholder, ashtray, coin holder, auxiliary power outlet & cassette/CD storage
- Cruise control, electronic w/set & resume speed-inc: telltale in instrument panel cluster
- Floor mats, carpeted- Instrumentation, analog, electronic-inc: Driver Information Center
- Keyless entry, remote-inc: panic button & trunk/hatch release
- Lighting, interior, courtesy, cargo console & glovebox
- Mirror, inside rearview, manual day/night-inc: dual reading lights
- Sound system feature, Bose speaker & amplifier system
- Storage-inc: lockable glovebox, center console & 3 rear compartments w/covers
- Theft-deterrent alarm system- Theft-deterrent system, PASS-Key II
- Tire Pressure Monitor System- Trunk, rear-inc: remote release
- Visors, illuminated vanity mirrors, driver & front passenger
- Windows, power-inc: driver & passenger express-down

Exterior

- Convertible top, manual folding-inc: heated glass rear window - Daytime running lamps
- Fog lamps, front, integral in fascia- Frame, uniframe-inc: corrosion-resistant coating
- Glass, Solar-Ray light tinted- Headlamps, halogen, power-operated retractable

Option Packages

Factory Installed Packages

ENGINE, 5.7L LS1 V8 SFI

(350 HP [261.0 kW] @ 5200 rpm, 375 lb.-ft.
[506.2 N-m] @ 4000 rpm for manual
transmission, 360 lb.-ft. [486.0 N-m] @ 4000 rpm
for automatic transmission)

- Induction system, outside air- Mirrors, outside rearview, power, heated, body-color
- Paint, basecoat/clearcoat- Wipers, intermittent, front

Safety

- Defogger, rear-window, electric-inc: front & side window outlets, driver & front passenger
- Seat adjuster, power, driver 6-way- Seat adjuster, power, front passenger 6-way
- Seats, front leather seating surfaces bucket, Sport-inc: lateral support & back angle adjustment, adjustable lumbar & side bolsters, & 6-way power driver & front passenger seats
- Sound system, ETR AM/FM stereo w/CD player-inc: seek-&-scan, digital clock, auto-tone control, speed-compensated volume & TheftLock
- Steering column, Tilt-Wheel-inc: (NK4) Steering wheel, leather-wrapped rim
- Air conditioning, dual-zone, automatic-inc: individual climate settings for driver & right front passenger, automatic climate control & outside temperature display
- Antenna, power
- Console, floor, lockable-inc: integral cupholder, ashtray, coin holder, auxiliary power outlet & cassette/CD storage
- Cruise control, electronic w/set & resume speed-inc: telltale in instrument panel cluster
- Floor mats, carpeted- Instrumentation, analog, electronic-inc: Driver Information Center
- Keyless entry, remote-inc: panic button & trunk/hatch release
- Lighting, interior, courtesy, cargo console & glovebox
- Mirror, inside rearview, manual day/night-inc: dual reading lights
- Sound system feature, Bose speaker & amplifier system
- Storage-inc: lockable glovebox, center console & 3 rear compartments w/covers
- Theft-deterrent alarm system- Theft-deterrent system, PASS-Key II
- Tire Pressure Monitor System- Trunk, rear-inc: remote release
- Visors, illuminated vanity mirrors, driver & front passenger
- Windows, power-inc: driver & passenger express-down

Mechanical

- Active handling, improves traction & enhances vehicle stability
- Brakes, 4-wheel antilock, 4-wheel disc- Traction control, all-speed
- Transmission, 4-speed automatic, electronically controlled w/overdrive
- Wheels, 5-spoke aluminum, 17" x 8.5" (43.2 cm x 21.6 cm), front & 18" x 9.5" (45.7 cm x 24.1 cm), rear
- 18.0 gallon fuel tank- Axle, 2.73 ratio, limited slip
- Engine access, rear opening hood-inc: underhood lamp
- Engine, 5.7L LS1 V8 SFI (350 HP [261.0 kW] @ 5200 rpm, 375 lb.-ft. [506.2 N-m] @ 4000 rpm for manual transmission, 360 lb.-ft. [486.0 N-m] @ 4000 rpm for automatic transmission)
- Exhaust outlets, chrome-plated tips
- Exhaust, stainless-steel, aluminized stainless-steel at rear of catalytic converter
- Rear wheel drive- Suspension, 4-wheel independent-inc: transverse fiberglass leaf springs
- Tires, front P245/45ZR17, extended mobility, Eagle F1
- Tires, rear P275/40ZR18, extended mobility, Eagle F1

Upstate Auto Sales

upstateautosalesinc.com

518-663-9089

3511 NY RT 7

Hoosick Falls, New York 12090

© 2024 AutoRevo - All rights reserved. - [Powered by AutoRevo](#)