



2011 Mercedes-Benz CL63 AMG

Website Price \$37,995

View this vehicle on our website at autoparkdallas.com



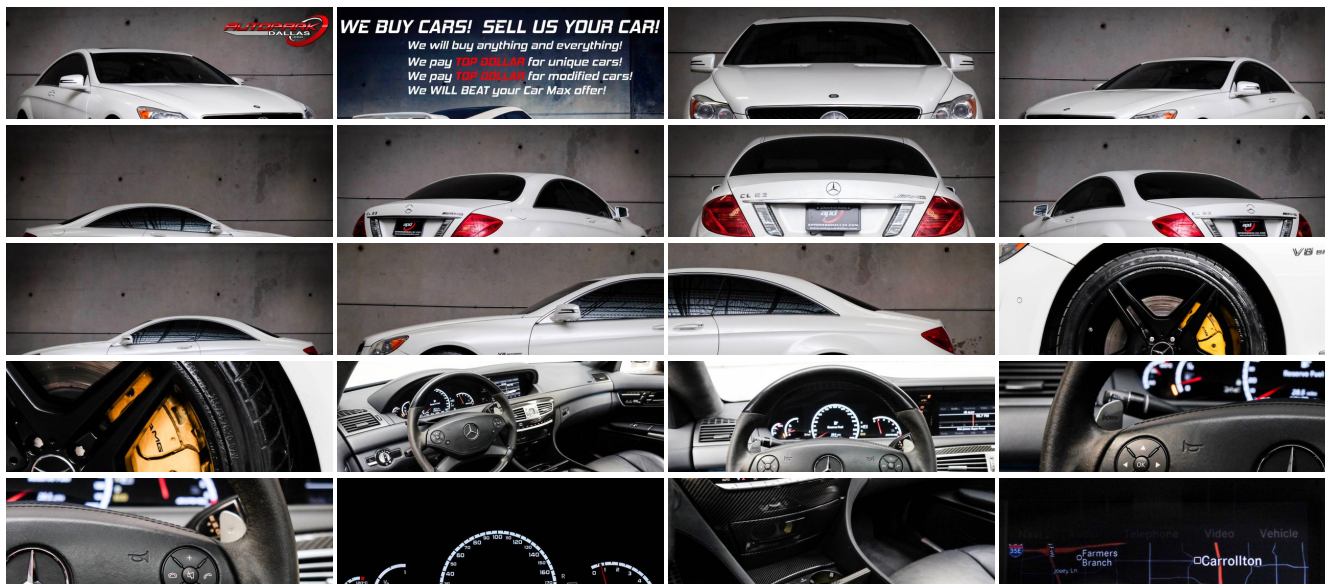
(214) 945-2601

2061 S Stemmons Fwy , Lewisville, TX 75067

Photos

Details

Contact



Specifications:

Year:	2011
VIN:	WDDEJ7EBXBA025898
Make:	Mercedes-Benz
Model/Trim:	CL63 AMG
Condition:	Pre-Owned
Body:	Coupe
Exterior:	Diamond White Metallic
Engine:	5.5L DOHC bi-turbo 32-valve V8 AMG engine
Interior:	Black Leather
Transmission:	7-speed automatic driver-adaptive transmission w/OD/AMG SpeedShift/touch shift
Mileage:	57,681
Drivetrain:	Rear Wheel Drive
Economy:	City 11 / Highway 18

Vehicle Description

AutoPark Dallas is excited to offer you this 2011 Mercedes-Benz CL63 AMG for sale! The German powerhouse of the automotive world has blessed us 'Need for Speed' lovers with the ultimate luxury daily driver; the CL63 AMG! Though that 'Need for Speed' begun at a pretty penny of MSRP = \$160,000 making it a luxury dream than a reality, time has spoken again and here it is far from that original price tag! The 5.5L Bi-Turbo V8 beast that pumps 536 horses and boast 590 pounds of torque, leaving the older 6.2L V8 Engine in the dust! Shes a beast on four wheels and ready for her next owner to burn rubber with, so don't hesitate to swing on by our indoor 16,000 Sq Ft Showroom located in Addison, Tx. as this Benz is parked amongst our inventory of 60+ other unique and luxury vehicles!

2011 Mercedes-Benz CL63 AMG

2 Previous Owners!

Clean CarFax!

LOW MILEAGE!

Diamond White Metallic Exterior

Black Premium AMG Leather Interior

AMG Carbon Fiber Interior Trim

Driver Assist Package!

Hands Free Bluetooth

Navigation w/ Voice Command

Heated & Cooled Front Row Seats

Back-Up Camera

Front & Rear Reverse Sensors

Powered Moonroof

Harmon/Kardon Premium Audio System

Push Button Start

Comfort Access Keyless Entry

Powered Tailgate

Manual Mode w/ Paddle Shifters

Dual Climate Controls

Power Folding Exterior Mirrors

Driver & Passenger Seat Memory

Steering Wheel Mounted Controls
5.5L DOHC Bi-Turbo 32-Valve V8 AMG Engine
7-Speed Automatic Transmission
Rear Wheel Drive
Professionally Detailed!
Well Maintained!
AND SO MUCH MORE!!!

Financing is available!

Get pre-approved in no time by filling out a credit application on the finance section of our website!

We also offer different extended warranty options!

****All vehicles are priced for QUICK SALE. All REASONABLE offers will be considered****

AutoPark Dallas is dedicated to offering a level of customer service not usually found in the automobile industry. We take pride in continuing this service long after the vehicle has been delivered. We strive for excellence and make every effort to see that our customer is completely satisfied with every purchase. Referrals and Testimonials is what our business is built on.

Our extensive buying experience guarantees quality, pre-owned and new vehicles hand-picked from factory sources. Our love for the automobile and our dislike of traditional dealership tactics motivate us to provide the service we do!

Pre-purchase inspections are always welcomed! We also offer airport shuttles, amazing finance options, extended warranties and so much more!

We accept trade-ins, will BUY your car (modified or not) even if you don't buy one from us, and offer consignment deals to SELL your vehicle for you! For more information just give us a CALL or TEXT!!

#214-945-2601

Call or Text **Anytime!**

Se habla Español

WWW.AUTOPARKDALLAS.COM

Installed Options

Interior

- (2) pwr retractable rear head restraints w/manual fore-aft adjust
- 14-way pwr drive-dynamic multi-contour front AMG sport seats w/3-position memory/4-level massage/adjustable side bolsters/adjustable lumbar support
- 4-way pwr tilt/telescopic steering column w/memory- AMG aerodynamic bodywork
- AMG gauges w/AMG racetimer in digital display- AMG premium leather seat trim
- AMG premium leather-wrapped sport steering wheel w/shift paddles/audio & multi-function display control/programmable easy-exit feature/mounted shift buttons
- Active ventilated front seats w/heating feature- Adjustable ambient lighting
- Alcantara headliner- Anti-theft alarm system- Auto-dimming rearview mirror
- COMAND cockpit management & data system -inc: 40GB hard drive-based navigation system, audio status, 8" color LCD screen, hands-free communication system controls, driver-programmable settings for instruments, lighting, vehicle, convenience feature
- Cruise control- Dual illuminated vanity mirrors
- Dual-zone automatic climate control -inc: electrostatic dust/pollen filter, humidity/dewpoint/sun sensors, tunnel mode w/1-touch closing of all windows
- Electronic parking brake- GPS navigation system w/20 GB hard drive

Option Packages

Factory Installed Packages

DRIVER ASSISTANCE PKG

-inc: DISTRONIC plus w/PRE-SAFE brake, active blind spot & lane keeping assist \$2,950

SPLITVIEW FRONT ENTERTAINMENT SYSTEM

-inc: remote control, wireless headphones \$710

DIAMOND WHITE METALLIC

\$795

STANDARD PAINT

BLACK PREMIUM LEATHER SEAT TRIM

- Electronic parking brake- GPS navigation system w/20-GB hard drive
- Integrated HomeLink compatible 3-button garage door control- Keyless-Go
- Locator lighting
- Mercedes-Benz maintenance system plus display -inc: distance remaining to next maintenance, type of service due, reminders, brake-pad wear
- Multi-function display in instrument cluster -inc: trip computer, exterior temp gauge, maintenance system, digital speedometer, reminder & malfunction messages, audio status, navigation route guidance, tire pressure
- Night security illumination- Pwr rear window sunshade w/1-touch express up/down
- Pwr trunk w/button on driver door & trunk lid & SmartKey - Pwr windows
- Rear window defroster w/auto-shutoff based on time/driving speed/exterior temp
- Roll-over sensor
- SmartKey infrared remote w/windows & sunroof open/close, active ventilated seats on
- SmartKey system w/remote central locking system/anti-theft engine immobilizer/driver-programmable user-recognition features/drive away auto locking
- Stainless-steel door sill trim w/AMG insignia

Exterior

- 20" twin AMG 5-spoke aluminum wheels
- Bi-xenon high-intensity discharge headlamps -inc: auto level control, heated headlamp washers, selectable light-sensing auto-on headlamps, auto lamp substitution, active curve illumination
- Halogen front foglamps- Laminated infrared-reflecting & noise insulating glass
- P255/35ZR20 front & P275/45ZR18 rear high performance tires
- Programmable pwr folding heated mirrors w/memory/auto-dimming driver mirror/integrated LED turn signals
- Pwr tilt/slide tinted glass sunroof w/1-touch open & close/memory - Rear foglamp
- Variable intermittent rain-sensing dual aero-blade windshield wipers

Safety

- (2) pwr retractable rear head restraints w/manual fore-aft adjust
- 14-way pwr drive-dynamic multi-contour front AMG sport seats w/3-position memory/4-level massage/adjustable side bolsters/adjustable lumbar support
- 4-way pwr tilt/telescopic steering column w/memory- AMG aerodynamic bodywork
- AMG gauges w/AMG racetimer in digital display- AMG premium leather seat trim
- AMG premium leather-wrapped sport steering wheel w/shift paddles/audio & multi-function display control/programmable easy-exit feature/mounted shift buttons
- Active ventilated front seats w/heating feature- Adjustable ambient lighting
- Alcantara headliner- Anti-theft alarm system- Auto-dimming rearview mirror
- COMAND cockpit management & data system -inc: 40GB hard drive-based navigation system, audio status, 8" color LCD screen, hands-free communication system controls, driver-programmable settings for instruments, lighting, vehicle, convenience feature
- Cruise control- Dual illuminated vanity mirrors
- Dual-zone automatic climate control -inc: electrostatic dust/pollen filter, humidity/dewpoint/sun sensors, tunnel mode w/1-touch closing of all windows
- Electronic parking brake- GPS navigation system w/20-GB hard drive
- Integrated HomeLink compatible 3-button garage door control- Keyless-Go
- Locator lighting
- Mercedes-Benz maintenance system plus display -inc: distance remaining to next maintenance, type of service due, reminders, brake-pad wear
- Multi-function display in instrument cluster -inc: trip computer, exterior temp gauge, maintenance system, digital speedometer, reminder & malfunction messages, audio status, navigation route guidance, tire pressure
- Night security illumination- Pwr rear window sunshade w/1-touch express up/down
- Pwr trunk w/button on driver door & trunk lid & SmartKey - Pwr windows
- Rear window defroster w/auto-shutoff based on time/driving speed/exterior temp
- Roll-over sensor
- SmartKey infrared remote w/windows & sunroof open/close, active ventilated seats on
- SmartKey system w/remote central locking system/anti-theft engine immobilizer/driver-programmable user-recognition features/drive away auto locking
- Stainless-steel door sill trim w/AMG insignia

Mechanical

- 4-wheel high performance dual-piston sliding-caliper AMG pwr disc brakes
- 5.5L DOHC bi-turbo 32-valve V8 AMG engine
- 7-speed automatic driver-adaptive transmission w/OD/AMG SpeedShift/touch shift
- AIRMATIC air suspension w/adaptive damping system
- AMG modified Active Body Control (ABC) -inc: coil spring & electronically controlled hydraulic cylinder w/gas-pressurized shock absorber at each wheel, auto all-wheel level control, driver-selectable ride-height control, auto speed-sensitive lowering
- AMG sport exhaust system w/dual twin tailpipes
- Independent 4-link front suspension w/anti-lift control/stabilizer bar
- Independent multi-link rear suspension w/anti-squat/anti-dive system- Rear wheel drive
- Speed-sensitive pwr rack & pinion steering

BLACK, PREMIUM LEATHER SEAT TRIM

Option Packages Total

\$4,455

AUTOPARK

Dallas

Auto Park Dallas

View this car on our website at autoparkdallas.com/6626865

Website: autoparkdallas.com

Phone: (214) 945-2601

Map: 2061 S Stemmons Fwy, Lewisville, TX 75067

